

[2013-23]



Shepherd Bush Green Management Plan

[Pick the date]

Revision	Date	Author(s)	Approved for LBHF by:
V1	15/02/13	Andrew Kauffman / Preeti Chatwal (QSL)	Paul Bassi

1. Contents

1. CONTENTS	3
2. INTRODUCTION	6
2.1 ACTION PLAN PROGRESS SUMMARY	7
3. STRATEGIC CONTEXT.....	8
3.1 HAMMERSMITH AND FULHAM COMMUNITY STRATEGY	8
3.2 PARKS AND OPEN SPACES STRATEGY.....	9
3.3 HOW SHEPHERDS BUSH GREEN CONTRIBUTES TO STRATEGIC OBJECTIVES	9
4. KEY SITE INFORMATION AND DESCRIPTION.....	11
4.1 SITE DETAILS.....	11
4.2 LOCATION	12
4.3 SOILS	12
4.4 HYDROLOGY	12
4.5 FLORA, FAUNA AND NATURE CONSERVATION	12
4.6 FACILITIES	13
4.7 HISTORY OF SHEPHERDS BUSH GREEN	13
4.8 PRESENT USER PROFILE	16
4.9 MANAGEMENT	16
4.10 LEASES, COVENANTS AND LEGAL INTEREST	17
5. VISION	18
6. AIMS, OBJECTIVES AND MANAGEMENT ACTIONS.....	20
6.1 CREATING A WELCOMING SQUARE	21
6.1.1 BACKGROUND AND ISSUES	21
6.1.2 SITE FACILITIES AND FURNITURE.....	23
6.1.3 OBJECTIVES	23
6.1.4 MANAGEMENT ACTIONS.....	24
6.2 A HEALTHY, SAFE AND SECURE PARKS AND OPEN SPACES.....	25
6.2.1 BACKGROUND AND ISSUES	25
6.2.2 INSPECTION REGIME	26
6.2.3 SIGNAGE	26
6.2.4 DOGS.....	26
6.2.5 ENCOURAGING HEALTHY LIFESTYLES	27
6.2.6 TREE MANAGEMENT	28
6.2.7 PARKS CONSTABULARY	28
6.2.8 HOW OUR CONTRACTORS MANAGE SAFETY	30
6.2.9 SAFETY INFORMATION.....	31
6.2.10 OBJECTIVES	31
6.2.11 MANAGEMENT ACTIONS.....	31
6.3 A WELL MAINTAINED AND CLEAN OPEN SPACE	33
6.3.1 BACKGROUND AND ISSUES	33
6.3.2 INSPECTION AND MAINTENANCE OPERATIONS	33
6.3.3 CONFIRM INFRASTRUCTURE MANAGEMENT SYSTEM.....	34
6.3.4 LITTER AND WASTE MANAGEMENT	34
6.3.5 GRAFFITI.....	35
6.3.6 FLYPOSTING.....	35
6.3.7 BUILDINGS AND ASSETS	36
6.3.8 SMALL WORKS TEAM.....	36
6.3.9 OBJECTIVES	36

6.3.10	MANAGEMENT ACTIONS.....	36
6.4	ACHIEVING SUSTAINABLE SPACES.....	38
6.4.1	BACKGROUND AND ISSUES	38
6.4.2	PESTICIDE AND PEAT USE.....	39
6.4.3	PESTS AND DISEASE.....	39
6.4.4	BIOLOGICAL CONTROL	39
6.4.5	WEED CONTROL	39
6.4.6	ARBORICULTURE	40
6.4.7	TREE POLICY AND MANAGEMENT	40
6.4.8	BIODIVERSITY AND ENVIRONMENTAL ISSUES	41
6.4.9	AIR QUALITY ACTION PLAN	41
6.4.10	BIODIVERSITY ACTION PLAN (BAP)	41
6.4.11	LOCAL DEVELOPMENT FRAMEWORK (LDF)/UNITARY DEVELOPMENT PLAN	41
6.4.12	GREEN WASTE RECYCLING	41
6.4.13	SUSTAINABLE USE OF VEHICLES AND MACHINERY	42
6.4.14	ENVIRONMENTAL PROCUREMENT.....	42
6.4.15	WATER MANAGEMENT	42
6.4.16	OBJECTIVES	42
6.4.17	MANAGEMENT ACTIONS.....	43
6.5	CONSERVATION AND HERITAGE	43
6.5.1	BACKGROUND	44
6.5.2	HERITAGE OF SHEPHERDS BUSH GREEN	45
6.5.3	ECOLOGY AND CONSERVATION	45
6.5.4	MANAGEMENT OF TREES	45
6.5.5	BUILT ENVIRONMENT	46
6.5.6	OBJECTIVES	46
6.5.7	MANAGEMENT ACTIONS.....	46
6.6	COMMUNITY INVOLVEMENT	48
6.6.1	BACKGROUND AND ISSUES	48
6.6.2	COMMUNITY INVOLVEMENT	48
6.6.3	STAKEHOLDERS AND VOLUNTEERS	49
6.6.4	MANAGEMENT OF STAKEHOLDER GROUPS	49
6.6.5	FRIENDS OF PARKS FORUM.....	50
6.6.6	PARK USER CONSULTATIONS.....	50
6.6.7	GREENSTAT.....	50
6.6.8	FEEDBACK AND COMPLAINTS	51
6.6.9	OBJECTIVES	51
6.6.10	MANAGEMENT ACTIONS.....	51
6.7	MARKETING.....	53
6.7.1	BACKGROUND AND ISSUES	53
6.7.2	EVENTS AND ACTIVITIES	53
6.7.3	SIGNAGE AND INFORMATION	53
6.7.4	MARKETING AND COMMUNICATION PLAN	53
6.7.5	OBJECTIVES	53
6.7.6	MARKETING ACTIONS	54
6.8	MANAGEMENT	55
6.8.1	CURRENT STATUS AND ISSUES	55
6.8.2	RESIDENT SERVICES – MANAGEMENT STRUCTURE	55
6.8.3	PARKS ASSET MANAGEMENT STRATEGY AND ASSET MANAGEMENT PLAN.....	56
6.8.4	CONFIRM INFRASTRUCTURE MANAGEMENT SYSTEM.....	56
6.8.5	ARBORICULTURE – MANAGEMENT OF TREES.....	57
6.8.6	OBJECTIVES	58

6.8.7	MANAGEMENT ACTIONS.....	58
7.	MONITORING AND PLAN REVIEW.....	59
8.	REFERENCES.....	59
9.	APPENDICES.....	59

2. Introduction

Shepherds Bush Green is an approximately 8-acre (3.2 ha) triangular area of open grass surrounded by trees and roads with shops in Shepherd's Bush, an area of West London which takes its name from the Green.

It is bounded by Uxbridge Road on the north side and Shepherds Bush Green on the other two sides, the southern stretch of which was formerly part of Goldhawk Road. The Hammersmith War Memorial stands in the eastern corner, which has been divided off from the rest of the common: tennis courts have been provided at the western end of the common.

Shepherd's Bush Green is a significant public open space and an important local landmark. It plays an important role in connecting the Whitecity commercial development with the town centre shops, the surrounding facilities and residential areas.

The council has been trying to improve the Green for several years but those plans were held up as the proposals needed the consent of the Department for the Environment, Food and Rural Affairs (DEFRA).

The plans were then studied by the Planning Inspectorate who eventually gave the green light in June 2011.



View: Shepherd's Bush Green

This management plan is not exhaustive and is to be read in conjunction with the London Borough of Hammersmith and Fulham (LBHF) Contract for Grounds Maintenance Services Specification and the Parks and Open Spaces Strategy.

Parks management is a continuous process that takes account of issues that arise. Therefore this management plan is a "live document" which will be updated annually. As well as being actively implemented it is essential that this strategy is reviewed and updated to ensure Shepherds Bush Green is relevant to users' needs, cared for and respected by all.

The objectives for the sustainable management and future development of the Park are structured around the eight key criteria set by the Green Flag Award:

1. **Creating a Welcoming Space**
2. **Providing a Park that is Healthy, Safe and Secure**
3. **A Park that is Clean and Well Maintained**
4. **Sustainable Management of Resources**
5. **Appropriate Management of Conservation and Heritage Features**
6. **Encouraging Community Involvement**
7. **Marketing the Facility Effectively**
8. **Implementation of Effective Management Strategies**

2.1 Action Plan Progress Summary

Progress against the action plan projects is summarised below. Projects are added to this list upon completion.

#	Description	Objective	Date Completed	Funding Source	Value
	Practical Completion of Hard Landscape Elements		Expected April 2013		
	Practical Completion of Soft Landscape Elements		Expected April 2013		

3. Strategic Context

This Management Plan articulates the vision for the improvement of Shepherd's Bush Green, its management and maintenance and provides detailed objectives and action plans to direct Hammersmith and Fulham's Parks and Recreation Team to achieve this vision over the next 10 years. The objectives of the management plan are aligned to the criteria for the Green Flag Award administered by Keep Britain Tidy.

Significantly, the objectives for all of the Management Plans for Hammersmith and Fulham's open spaces have been developed with the wider strategic objectives across the borough in mind. These objectives are defined in the Hammersmith and Fulham Community Strategy and Parks and Open Spaces Strategy.

3.1 Hammersmith and Fulham Community Strategy

The Hammersmith and Fulham Community Strategy's focus is on making improvements that matter to the local community. Developed in partnership with residents, local businesses, voluntary and community groups and the public sector, the Community Strategy puts residents first and provides a vision and framework for the future of the borough:

*To work with the Borough Partnership to **create a borough of opportunity for all.***

The key priorities are to:

- Provide a top quality education for all;
- Tackle crime and antisocial behaviour;
- Deliver a cleaner, greener borough;
- Promote home ownership;
- Set the framework for a healthy borough;
- Deliver high quality, value for money public services;
- Regenerate the most deprived part of the borough.



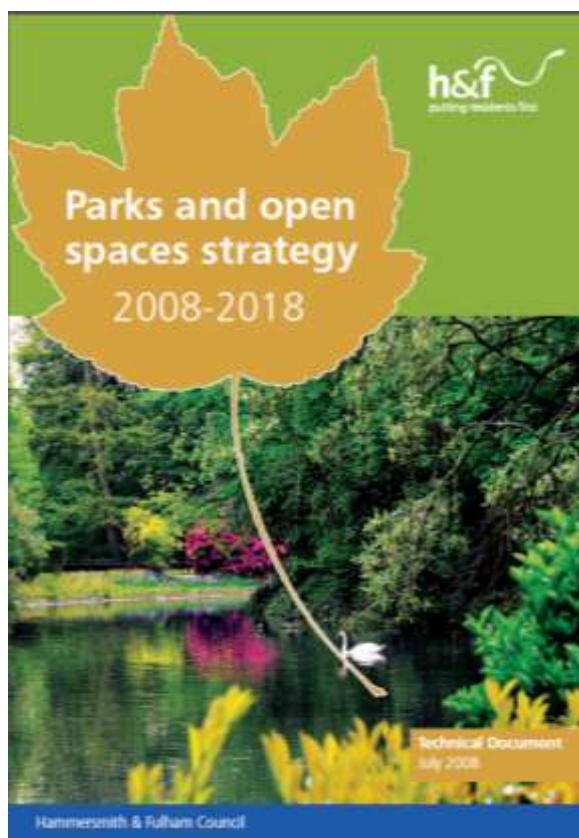
Hammersmith and Fulham Community Strategy

3.2 Parks and Open Spaces Strategy

Hammersmith and Fulham's Parks & Open Spaces Strategy encompass all public and private open spaces across the borough including Parks, open spaces, housing open land and civic spaces. It is based on the results of audits, surveys and ongoing consultation and is aligned with key national and regional guidance on open space.

The purpose of the Strategy is to coordinate improvements in provision, quality, management, accessibility and to promote the use and enjoyment of Parks and open spaces to more individuals and groups in the community. Facilities will be improved in response to areas of deficiency identified in the 2006 Open Space Study (Supply) and the Residents Survey (2008).

The Parks and Open Spaces Strategy provides a framework for the delivery of services and future improvement actions for the London Borough of Hammersmith and Fulham, and our community partners and stakeholders involved in providing, managing and enjoying open spaces across the borough. This will involve working in partnership both within the council and with external partners and stakeholders, including local residents' and friends' groups. The Strategy will be monitored and reviewed annually to ensure we are working towards the Parks and Open Spaces vision.



The Strategy will be essential in:

- Presenting a framework for protecting and improving Hammersmith and Fulham's Parks and open spaces network;
- Raising standards of open space management and maintenance;
- Informing decision-making for the future of Parks and open spaces;
- Supporting policy development for open space in the borough's Local Development Framework and when negotiating planning obligations;
- Determining capital expenditure on Parks and open spaces;
- Linking into borough wide programmes such as ; Neighbourhood Renewal Areas and the Local Area Agreements;
- Working with partners such as Groundwork West London, Hammersmith Community Garden Association, Urban Studies centre and the Thames Landscape Strategy (Kew to Chelsea).

3.3 How Shepherds Bush Green Contributes to Strategic Objectives

As one of the borough's open spaces Shepherds Bush Green has a variety of facilities and features that assist the Council in delivering the **Borough of Opportunity**.

Shepherds Bush Common is undergoing complete redesign and refurbishment in consultation with local communities and funded by development gain monies to provide an oasis of green and calm in the middle of this busy area, with enhanced play and café areas.

The table below illustrates how Shepherd's Bush Green contributes to Hammersmith and Fulham's wider strategic objectives.

Table 2.1 **Shepherds Bush Green and Hammersmith and Fulham's Strategic Objectives**

Top Quality Education for all	Tackling crime and antisocial behaviour	Cleaner Greener	Framework for Healthy Borough	High Quality Public Services
Nature Conservation Areas and activities	Parks Constabulary Patrol.	Natural Habitat and ecology improving local water, soil and air quality.	Community Gardening.	Bespoke quality site furniture.
Local History and Heritage	Inspected and well-maintained facilities. CCTV	Accessible by Public Transport	Safe and accessible paths.	Accessible facilities for people living with disabilities.
Estate Gardening Project	Working with Edwards Woods Estate RA	Good pedestrian access to all parts of the site.	Play Areas	
Third Sector Partnership.	Partnering with Hammersmith and Fulham Homes and Notting Hill Housing Association	Enhancing local urban amenity.	Hard ball court Football and Basketball	
	Fulham Kickz Youth engagement	Mobile Quadron operative		

4. Key Site Information and Description

4.1 Site Details

Name	Shepherds Bush Green
Address	
Contacts	General enquiries: 020 8753 3226 or Parks@lbhf.gov.uk
Web	www.lbhf.gov.uk
Grid Reference	
Designation	Public Open Space
Ownership	London Borough of Hammersmith and Fulham
Size	3.2 ha
Type	
Legal Interest	Land registered to LBHF
Byelaws	LBHF parks and open space applies to this site. See Appendix 6.
Access	Open at all times
Local Facilities	Multi-Use All weather games area Children's playground
Transport	Nearest Tube Station is Shepherd Bush There a number of bus routes to the park – please see Transport for London websites
Parking	No Parking on site. On street pay and display parking.



Picture: Location Map of Shepherds Bush Green

4.2 Location

Shepherds Bush Green is surrounded by busy roads on all three sides. Four main roads radiate from the western side of the Green and three roads approaching its eastern apex, meeting at the large Holland Park Roundabout. This position makes it an important node of the bus network, with eighteen bus routes arriving there. It is also near five London Underground stations; Shepherd's Bush (Central Line), White City (Central Line), Shepherd's Bush Market (Hammersmith & City Line), Goldhawk Road (Hammersmith & City Line) and Wood Lane (Hammersmith & City Line).

On the north side of the Green is the Uxbridge Road, and beyond that the Westfield London shopping centre. To the east, the Green is bounded by the physical barrier of the West London railway line and the grade-separated West Cross Route (part of the aborted 1960s London Motorway Box scheme). The Holland Park Roundabout and the small Addison Bridge to the south are the only ways to cross this barrier.

To the east of the Green lies affluent and leafy Holland Park and Notting Hill; although the Edward Woods Estate just to the northeast of the roundabout is part of and managed by the London Borough of Hammersmith and Fulham, and is therefore more closely associated with Shepherds Bush.

4.3 Soils

Most of the borough of Hammersmith and Fulham is flat, lying on the flood plain of the Thames, with the land rising very gradually northwards.

Shepherds Bush Green is located on River Terrace Gravel deposits on London Clay. River Brickearth (a fine stoneless loam thought to be produced by the reworking by rivers of earlier deposits of desert dust or *loess*) overlays River Gravel deposits in the north of the site.

4.4 Hydrology

The open space falls under the general river Thames water basin. There are no surface water courses.

4.5 Flora, fauna and Nature Conservation

The whole of Shepherds Bush Common is a designated Site of Local Importance for Nature Conservation. An ecological study, carried out for the borough council by Grontmij Ltd, concluded that the proposed redevelopment works would not greatly alter the habitat types present and would not change the overall ecological value of the area. It was however suggested that any demolition or tree felling work should take place outside the period March-August to avoid disturbance of nesting birds.

Natural England was consulted regarding the proposals and raised no objection.

4.6 Facilities



Toilets

There is no toilet facility in the Park. A

Recycling Facilities

The waste streams will be separated by the street cleaning contractor, Serco. The recycle Litter bins have been provided in the park.

Children's Facilities

The new improved Green will sport two new state-of the-art playgrounds, one catering for young children and one for older children and teenagers. Playgrounds will include a range of swings and slides, a sandpit with mechanical diggers, a six yard-high space net, climbing walls, roundabouts and other equipment designed to challenge, develop motor skills and keep children happy and entertained for hours.



Cafe

A cafe was proposed in the new development but has not been approved.

4.7 History of Shepherds Bush Green

The origins of the name Shepherds Bush are obscure. The name may have originated from the use of the common land as a resting point for shepherds on their way to Smithfield Market in the City of London. There appears to have been an ancient custom of pruning a hawthorne bush to provide a shelter for shepherds protecting them from the elements as they watched their flocks. Alternatively the Green may simply be named after a local landowner. In any event, in 1635 it was recorded as "Shepherds Bush Green".

Formerly waste land of Fulham manor, the common was acquired by the MBW from the Ecclesiastical Commissioners, then Lords of the Manor of Fulham, under a scheme by which the rights of the latter were purchased for £505; the scheme was confirmed by the Metropolitan Commons Second Supplemental Act of 1871. The common was marshy and

drained by a ditch at the time of the transfer; improvements were subsequently carried out which included draining the ditch and raising the level of the land.

Complaints that the common was frequented by disreputable characters and the homeless by night and used for gambling, including such games as pitch and toss, were constantly made. A deputation in protest at the number of homeless sleeping in the open on the green was led to a meeting of the Hammersmith Borough Council by Sir William Bull, the local MP, in March 1910. Many felt that the common should be enclosed and converted into a park so that it might be closed at night, but efforts to bring this about failed. Administration was transferred to the London Borough of Hammersmith by the GLC in April 1971.

It is now a much loved and used Common at the heart of the Shepherds Bush community.



Picture: Shepherd's Bush – Cabmans' Shelter and Green



Picture: Shepherd's Bush Road 1905

Redevelopment

Shepherds Bush Common Improvement

Improvement works to the Common are now being carried out by FM Conway and are due for completion in mid-July 2012.

The works will:

- Rationalise and widen pathways, creating legible routes and linking pedestrian crossing points.
- Create a tree-lined boulevard around the Common
- Reduce clutter and maximise green space
- Introduce three, new, low-mounted landforms to guide pedestrian and cycle traffic and focus attention inwards towards the centre of the Common
- Create two, new, state-of-the-art playgrounds for children of all ages
- Restore the War memorial
- Refurbish or demolish the EDF substation building (to be confirmed)

The area at the eastern end of the Common above the Gingsik Club is outside the scope of this project and will be addressed as part of a separate project at a later date.

While works are in progress:

- Pedestrian and cycle access across the Common will be available at all times, the rest of the Common will remain closed.
- Works to the perimeter of the Common will, at times, mean a lane is closed to traffic. Traffic delays can be expected at these times.
- Works at times will be unavoidably noisy. F M Conway will endeavour to keep dust and noise nuisance to a minimum
- Nearby Hammersmith Park and Brook Green are available for your recreation and leisure needs while the Common is closed

For progress reports and traffic updates please visit www.lbhf.gov.uk/shepherdsbushgreen

KEY

- New Path Network
- Toddler's Playground
- Children's Playground
- War Memorial
- Mounds 900mm High
- Tree Lined Boulevards

Site Masterplan



Sample of Playground Equipment



Logos for h&f, CONWAY, Grontmij, Waterman, and ARCADIS are displayed at the bottom.

Plans have been drawn up by the London Borough of Hammersmith and Fulham to substantially re-develop Shepherd's Bush Green. The plans include:

- Creating two new play areas for children:** The new improved Green will sport two new state-of-the-art playgrounds, one catering for young children and one for older children and teenagers. Playgrounds will include a range of swings and slides, a sandpit with mechanical diggers, a six yard-high space net, climbing walls, roundabouts and other equipment designed to challenge, develop motor skills and keep children happy and entertained for hours.
- General improvement to routes across the Green for both cyclists and pedestrians and the planting of further trees:** The footpath and cycle network will be improved to better reflect the paths that cyclists and pedestrians are likely to take, with pathways widened and a tree lined avenue providing an attractive walking route around the Green.
- In addition, the Grade II listed War Memorial is to be reset onto a new granite stepped plinth

A proposal to create a new cafe was declined by the planning authorities.

The redevelopment of the Green was scheduled to be completed in time for the 2012 Summer Olympics but, apparently due to high levels of arsenic found in the soil by building contractors, the plans have been substantially delayed.

An Inspire Mark (awarded by LOCOG (London Organising Committee of the Olympic and Paralympic Games), making it part of the Cultural Olympiad) public artworks created by artist Elliott Brook, entitled "Goaloids", were installed on Shepherd's Bush Green for the duration of London 2012 and the Paralympic Games. These large unique rotating football related sculptures commemorate the history of Shepherd's Bush and White City, which hosted the 1908 Summer Olympics football. The London Borough of Hammersmith and Fulham is the only Borough to have 3 football teams playing Premier League Football.



Cllr Greg Smith (left) breaks the ground on Shepherds Bush Green

A link on the Hammersmith and Fulham website has been set up so that Residents can keep up to date with how the Green improvements are progressing.
www.lbhf.gov.uk/shepherdsbushgreen.

4.8 Present User profile

Shepherds Bush Green is an extremely popular park with the local residents that serves a variety of users from all backgrounds. It is a highly valued local park in an area deprived of quality green space and is enjoyed a wide range of residents from adjoining housing estates. Visitors to the park that do not live locally use the park as a cut through.

The park serves a mixed community with a range of income and ethnic groups represented.

4.9 Management

The Parks and Recreation Team coordinate the management of Shepherds Bush Green and green spaces across the borough. A restructured service was established in 2007 to manage the Grounds Maintenance Contract that was being market tested to improve service delivery that included outsourcing all maintenance operations to an external contractor.

The Park and Recreation Management Structure relevant to Shepherds Bush Green is described in Appendix 7.

The *Head of Parks and Recreation* has the overall responsibility for the ongoing development and maintenance of the borough's parks, open spaces, cemeteries, sports facilities and leisure centres.

The *Parks Development Manager* is responsible for developing and implementing the Strategic Vision for the borough's Squares and Open Spaces and delivering improvement projects in open spaces. Community *Liaison* work with local stakeholders, including Friends of Park's Groups to ensure that park's meet the current and future aspirations of all users to deliver capital projects and develop policies.

Grounds Maintenance operations are managed by the *Park and Recreation Operations Manager* who is responsible for managing the Grounds Maintenance Contract and the *Grounds Maintenance Monitoring Officers, Small Works Team, Community Sports Monitoring Officer, Systems Administrator, Administrative Officer, Cemetery Manager and two Cemeteries Administrators*.

External contractors, Quadron Services Limited, undertake grounds maintenance in Shepherd's Bush Green and report directly to the Parks Operations Manager. The same dedicated work group based in the open space generally carries out the day-to-day management and maintenance. Quadron Service's Area Managers oversee a static workforce of 60 ground staff that provides the litter picking and horticultural works element to the Open Space and they place particular emphasis on the interface between Hammersmith and Fulham and the Square's users.

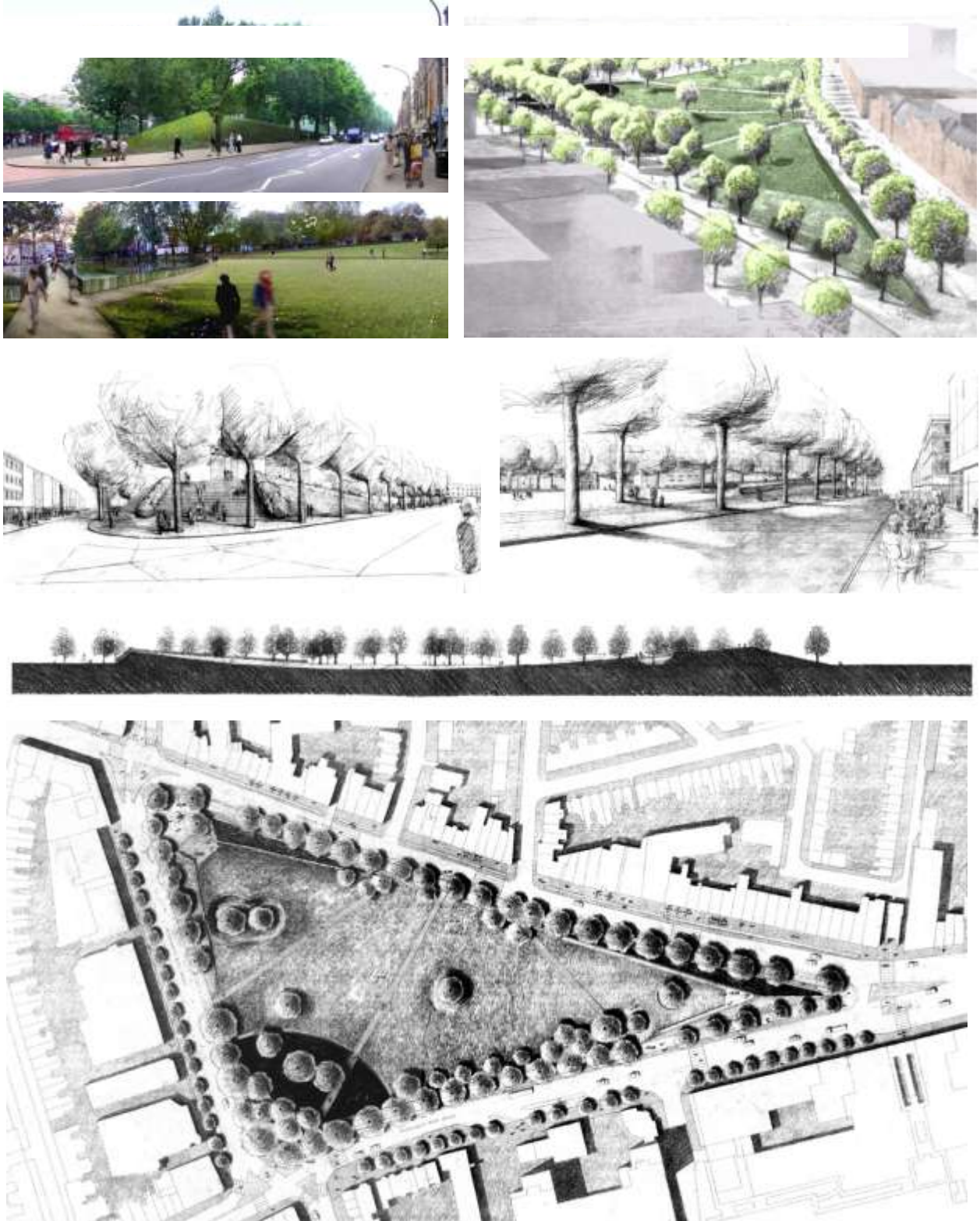
The Parks Constabulary, based at Glenthorne Road, Hammersmith, patrol the Shepherd's Bush Green and are responsible for enforcing the Park Byelaws and providing a visual presence enhancing the sense of safety and security in the Park. They are also responsible for locking and unlocking the square, resolving anti-social or nuisance disputes and issuing fixed penalty notices for failing to pick up after dogs, littering and antisocial behaviour.

4.10 Leases, Covenants and Legal Interest

Freehold registered title to London Borough of Hammersmith and Fulham.

5. Vision

“To encourage healthier lifestyles, strong inclusive communities and an appreciation of nature through the provision of an attractive, high quality space with facilities that are safe, clean, sustainable and accessible to all”.



Courtesy: Ian Ritchie Architects

Architect's Vision:

Shepherd's Bush Green is central to the regeneration and perception of Shepherd's Bush Town Centre. It plays an important role in connecting the Whitecity commercial development with the town centre shops, the surrounding facilities and residential areas. It is a significant public open space and an important local landmark. Ian Ritchie Architects were commissioned in October 1999 by the London Borough of Hammersmith & Fulham to analyse the existing conditions of the Green and its immediate surroundings. They developed vision for its improvement along with Hinnerk Wehberg of Büro Wehberg Eppinger Schmidtke, landscape architects from Hamburg.

The key elements of the design concept for improvements to the perimeter are:

- Widening pavements around the Green
 - Planting new trees to create 'avenues' on the south and west sides
 - Creating wide pedestrian crossings to increase access onto the Green
- The key ingredients for a new landscape design of the Green are:
- Water – as a new child-friendly element at the south-west corner
 - Topography – varying levels slightly to change the perception of the Green
 - Light – new solutions for artificial lighting that also maximise public safety
 - Give Shepherd's Bush Green a Contemporary Art Space Vision

A highly charged triangle of grass, bounded on all three sides by road, could become an oasis for the arts, drawing to it a wide range of people.

Shepherd's Bush Contemporary Art Space will become a local talking point and a new hub of contemporary art in the Capital. The feel will be of a gallery without walls, London's first permanent outdoor urban art space. It would have a high quality programme of contemporary art accessible to all with a variety of projects by local and international artists based upon an imaginative and dynamic programme ranging from sculpture to installation and film. An ambitious programme curated specifically for the space. A website would be launched to initiate the project and accompany the reconstruction of the Green and the Town Centre. Shepherd's Bush Contemporary Art Space would begin to change the public's perception of the 'nature' of the Green without destroying it. It would reactivate the Green, creating a vital social area and redefining it as a dynamic cultural symbol.

6. Aims, Objectives and Management Actions

This section presents the aims and objectives for Shepherds Bush Green from 2013 – 2020. The format is closely aligned to the key criteria set by the Civic Trust and CABE Space for the Green Flag Award.

The current status of the open space, measured against the Green Flag criteria highlights current condition, recent development and areas for improvement. Objectives have been developed based on our assessment of the current status of the square. They define our intentions for achieving the vision for the square.

The management actions that follow the objectives describe how we will allocate funding, resources, and monitor our progress towards achieving our vision.

The Key Green Flag Criteria are:

1. Creating a Welcoming Space
2. Ensuring the Square is Healthy, Safe and Secure
3. Keeping the Square Clean and Well Maintained
4. Sustainable Management of Resources
5. Appropriate Management of Conservation and Heritage Features
6. Encouraging Community Involvement
7. Marketing the Facility Effectively
8. Implementation of Effective Management Strategies

The vision and objectives for Shepherds Bush Green are aligned with and may be in addition to the Hammersmith and Fulham Community Strategy, the Council's corporate objectives and the 2008 Hammersmith and Fulham Parks and Open Space Strategy vision and objectives.

The Management Actions described in the following section include likely timeframes, responsibility for implementation, cost estimates and funding sources. Most of the Management Plan objectives have specific actions against them. In some cases the objective relates to *how* we work. In these cases there will be no related actions.

This information will be reviewed regularly and is expected to evolve as opportunities arise.

6.1 Creating a Welcoming Square

The overall impression for someone approaching and entering the site should be positive and inviting.

Features of particular importance are:

- *Good and Safe Access*
- *Effective signage to and in the square; and*
- *Equal access for all members of the community.*

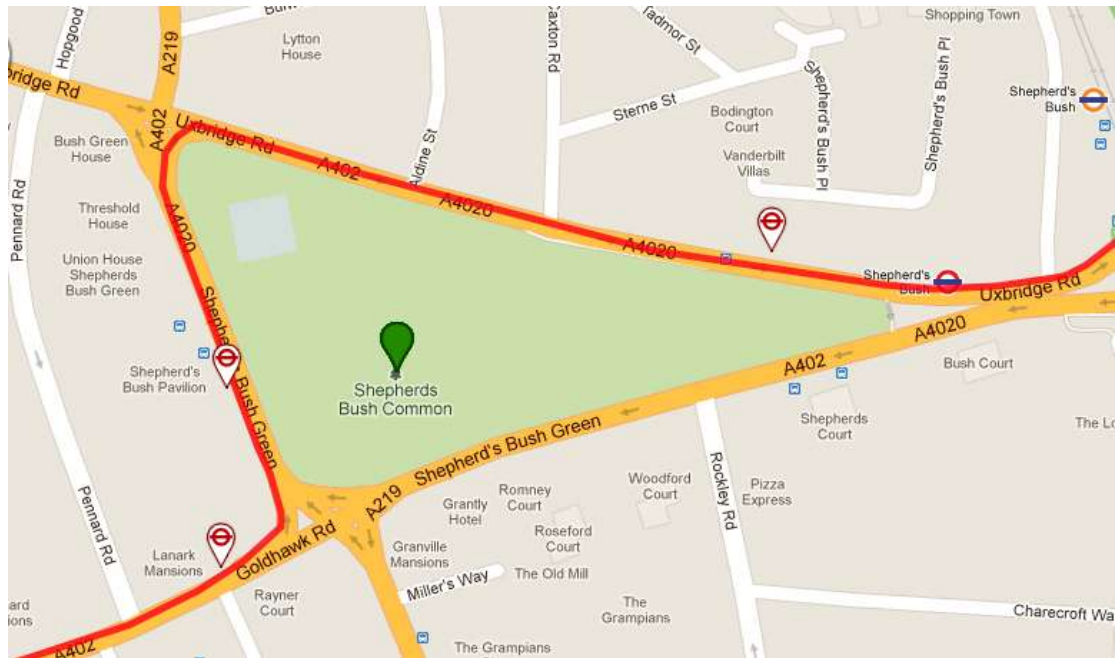


Picture: One of the entrances

6.1.1 Background and Issues

Access and Transport Options

Shepherds Bush Green is accessible to wider community using a variety of transport modes. It is an open site accessible at all times. There is limited pay and display parking available in the surrounding streets. Visitors travelling by London Underground have a couple of minutes walk from Shepherd's Bush tube station. The nearest bus stops (Shepherd Bush green & Shepherds Bush Station) are approximately 1 minute walk. Bus routes run frequently Monday to Sunday. Careful consideration of the Disability Discrimination Act has been taken to improve access on this site. All entrances are wheelchair accessible and footpaths link all major areas and points of interest in Shepherds Bush Green.



Transport Map showing the Bus Routes



Signage and Information

To ensure visitors know where they are and what facilities are available for their enjoyment, new interpretive panels and notice boards shall be developed and located at all key entrances to the Park. The signs will provide a map of the site with facilities and features of interest, policies on litter, dogs, and acceptable behaviour in the park and contact details for the parks service and the constabulary.

The Play area shall have separate signage informing users on the playground's age restrictions, safety precautions and contact details.

The size, layout and variety of features in the park require careful consideration of directional signage to guide visitors to various facilities and destinations in the park. This will be developed with assistance from partners.

Over the years, as signage design and messages may change, more signage shall be added. Unfortunately this signage, mostly highlighting prohibited activities may contribute to visual clutter throughout the park. The Signage Improvement project aims to avoid this unnecessary clutter to improve the welcoming feel of the park and encourage responsible park use through a consistent information format. Flyposting is also a significant issue in the borough's parks. This is addressed in the next chapter of the management plan.

Currently the Shepherds Bush Green is undergoing Refurbishment. So the caution signs have been put all along the access points.



Parks Signage Information and Instructions.

The size, layout and variety of features in the open space require careful consideration of directional signage to guide visitors to various facilities and destinations in the open space. This will be developed with assistance from partners.

Over the years, as signage design and messages have changed, more signage has been added. Unfortunately this signage, mostly highlighting prohibited activities has contributed to visual clutter throughout the park. The Signage Improvement project aims to remove this unnecessary clutter to improve the welcoming feel of the Park and encourage responsible Park use through a consistent information format. Fly posting is also a significant issue in the borough's parks and open spaces. This is addressed in the next chapter of the management plan.

6.1.2 Site Facilities and Furniture

The standardisation of all our furniture is important to provide consistent approach to our maintenance and to make site more welcoming. Good quality benches, waste bins are located conveniently around the site. An asset management plan is currently in development to ensure that there is a continuous programme of maintenance of all our assets. Set asset condition survey results for Shepherds Bush Green (Appendix 13)

The design and condition of shrub beds, planting, trees, facilities and features in Shepherds Bush Green contribute to the visitor's experience and satisfaction with the open space.

6.1.3 Objectives

1. Maintain boundary fencing, hedging, gates and access paths to a consistently high standard.

2. Improve signage in the surrounding neighbourhood to the square and provide more directional and interpretive signs within the square.
3. Meet the accessibility requirements of all users.
4. Provide everybody with a range of high quality, well-maintained and relevant facilities that are accessible, safe, and clean.

6.1.4 Management Actions

#	Description	When	Who	Budget (£000)	Source	Secured
Objective 1. Maintenance of boundary fencing, hedging, gates and access paths to a consistently high standard						
1	Ensure maintenance specification is suitable to maintain Resin Bonded path surface.					
2						
3						
Objective 2. Improve signage in the surrounding neighbourhood to the park and provide more directional and interpretive signs within the park						
4	Corporate parks information signage to be procured for the park.					
5	Directional and interpretive signs to be procured to direct pedestrian and cycle traffic.					
6	Features signs to be procured for Play Facilities					
Objective 3. Meet the accessibility requirements of all users						
6						
7						
Objective 4. Provide everybody with a range of high quality, well-maintained and relevant facilities that are accessible, safe and clean.						
8						

6.2 A Healthy, Safe and Secure Parks and Open spaces

The Park or green space must be a healthy, safe and secure place for all members of the community to use. Relevant issues must be addressed in management plans and implemented on the ground. New issues which arise must be addressed promptly and appropriately. Particularly important issues include:

- *Equipment and facilities must be safe to use;*
- *The square must be a secure place for all members or the community to use or traverse;*
- *Dog fouling must be adequately dealt with;*
- *Health and safety policies should be in place, in practice and reviewed; and*
- *Toilets, drinking water, first aid, public telephones and emergency equipment where relevant (e.g. lifebelts by water) should be available on or near the site and clearly signposted.*



Picture: Children's Playground

6.2.1 Background and Issues

The Parks Resident Survey in 2008 indicates that safety and quality facilities are important factors influencing how all Park and open spaced are used in the borough. We recognise this and prescribe safety by design principles wherever possible throughout the square. A well used open space is often a safer public space and the greater the perception of safety. The park over the last year has had no reported incidents of crime or anti-social behaviour. This is also reflected no incidents of vandalism.

The council has adopted a new set of open space byelaws, which have been agreed by the Secretary of State in 2011. These provide a more comprehensive set of regulations for improving nuisance and anti-social behaviour across all of our open spaces (Appendix 6)

It is widely accepted that encouraging greater the level of use of the public space provides more natural surveillance which reduces user's fear of safety. Improving sightlines minimise

hiding places and blind spots where possible, especially around entrances shall remain key priorities of our development programmes. See crime statistic (Appendix 16)

Due to the number of visitors, and partners working visibly within the park, security in the park has improved remarkably in the past few years. The site benefits from having mobile staff on site.

The most sustainable solution for future safety and security in the park is to ensure that Shepherds Bush Green is a well-used and respected facility. With trained mobile staff and sensible management of planting and trees, provide a safe and secure facility for the local community. Incorporating the local knowledge and expertise of our partners is essential to ensure effective management and development of the open space. Our partners in this goal include:

- Quadron Services Limited;
- Parks Constabulary;
- Local Metropolitan Police Beat Manager;
- Safer Neighbourhood Teams.

A collaborative partnership between service providers, enforcement agencies and customers is very important for the continued effective management and enjoyment by all of our open spaces.

Maintenance work is undertaken all year round to ensure that site is kept clean and safe. Contact information is available on the notice boards and Grounds Maintenance Staff are able to respond quickly to any relevant safety issues arising.

6.2.2 Inspection Regime

Inspections and monitoring is a collective responsibility. Parks Constabulary, Service providers, Local community, and the Small Works Team all report any issues to the relevant council department. Grounds Maintenance Monitoring Officers perform more formal inspections of the site on a regular basis.

More systematic inspection of the open space is by Grounds Maintenance Monitoring Officers who assess Shepherds Bush Green on a monthly basis as part of the service's Key Performance Indicator reporting. This is an assessment of the contractor Quadron Services Limited, performance against the specification of the Grounds Maintenance Contract. The condition of seats, litterbins etc is undertaken on a daily basis by Parks Constabulary.

(See Inspection and Maintenance Regime – Appendices 1 & 2).

Unsafe facilities are repaired or replaced immediately to ensure user safety and discourage vandalism. Quadron Services Limited are contracted to report defects on a weekly basis.

6.2.3 Signage

Signage is an important tool for communicating to the public and sharing information.

There is signage installed at Shepherds Bush Green entrances and within the open space mostly to ensure safe and responsible use of the open space: They outline the open space do's and don't's (Byelaws) such as keeping the open space tidy and the requirement that square users use the bins dog bins provided. The Parks Constabulary contact details and other relevant services are also displayed.

6.2.4 Dogs

Dogs and dog owners are an important part of the park community as dogs bring life and energy to a park and their owners provide surveillance during early mornings and late evenings. It is extremely important, however, that dogs are controlled in the open space as they can also cause problems if their owners are irresponsible.

The dogs are not allowed inside the Park except the Guide Dogs. There is a designated Dog Run next to the Park where the Owners can take their dogs.

The Park is a designated Dog Control Zone. The control of Dogs in the borough is the responsibility of the Parks Constabulary and Police. The following dog control orders took effect in Hammersmith and Fulham on 15 March 2007. Failure to comply with these orders will mean a £75 fine or prosecution.

- Fouling of Land by Dogs Order;
- Dogs on Leads by Direction;
- Dogs on Leads Order;
- Exclusion of Dogs Order;
- Maximum Number of Dogs Order.

Council Good dog guide:

It is essential that dog owners act responsibly by:

- Picking up after their dogs immediately. This is a legal requirement under the Dogs (Fouling of Land) Act 1996 which is now superseded by the Square is within dog control zone and Environmental protection act legislations
 - Disposing of any dog mess in the dog waste bins provided, not in playground or litter bins.
 - Keeping an eye on their dogs at all times, preventing them from causing a nuisance or entering spaces that are obviously not designed for them such as playgrounds and the community garden.
 - Respecting other square users.
 - Respecting the trees and equipment in the square, not allowing their dogs to maul or damage them.
- The Parks Constabulary is responsible for the coordination of a proactive programme of dog education and enforcement with relevant agencies.
 - Dog walkers represent 20% of visits to parks and open spaces across Hammersmith and Fulham. Therefore the safety of the open spaces users relies heavily on responsible dog owners and effective enforcement against dog fouling, irresponsible owners and dangerous dogs.

Borough Action for Responsible K9s

BARK is a multi-agency group which proactively tackles irresponsible dog owners.

BARK stands for Borough Action for Responsible K9s and is a joint project between the Council, H&F Homes, local 'Safer Neighbourhood' Police, the Mayhew Animal Home and the RSPCA. It is responsible for promoting responsible dog ownership in the borough and for tackling dangerous dogs.

BARK operates regular proactive patrols of the borough to educate the community on dog health and welfare, responsible ownership and dog related legislation. Council investigates properties where we have been made aware of a dog related welfare complaint or environmental concern such as fouling or noise or where we suspect a banned type dog is being kept.

6.2.5 Encouraging Healthy Lifestyles

Shepherds Bush Green provides limited opportunities for both informal sports and community gardening.

Active participation in sport, health and physical activity contributes to:

- Developing sporting, health and fitness skills for children young people and adults;
- The enjoyment of life in the borough;

- The health fitness and well being of our community.

Shepherds Bush Green is an important borough facility where Hammersmith and Fulham Council can promote healthy living through the practical gardening in the park.

6.2.6 Tree management

Trees in the open spaces are one of the few locations where minimal intervention is advocated as trees should be encouraged to develop to maturity and have a natural canopy form.

Where management is necessary the priority for management of the borough's trees is public safety. Tree pruning, felling and planting will always be guided by the health and safety of the public, council officers and our contractor's employees.

Management of the tree population (the number, density, species choice and location) is important to ensure the safety and perceived safety of square users (e.g. trying not to obscure lamp columns or obstruct emergency access routes.)

The open spaces trees are inspected on a three year cycle however this limited to high priority areas such as trees adjacent to highways or pathways, tree next to structures or high usage areas.

The management of individual trees is also important to ensure the safety of the public (e.g. checks are made to ensure they have no major defects such as fungal decay that might cause structural failure of the trunk or branches).

During storm conditions the Square is usually closed to prevent public access for safety reasons.

Pruning of trees branches where these might obstruct the adjacent highway or paths and play areas within the squares is done routinely. Basal growth (tree shoots that grow at the bottom of some types of tree) is cut 3 times each year to help keep sight lines clear and to make it easier for pedestrians to pass.

Risk assessments are made by the Arboriculture Officer when specifying work and by the contractor before carrying it out.

During the year contractors will also carry out reactive works, which include urgent or emergency works e.g. as a result of tree or branch failure during storms. Our contractors Advanced Tree Services are on permanent call 365 days a year, 24 hours a day, to cover incidents involving trees in squares.

6.2.7 Parks Constabulary

The team consists of one Inspector, 15 Constables and three Sergeants providing a uniformed patrol service for the borough's 54 parks, open spaces and cemeteries. The constabulary operates 365 days a year.

Patrolling starts at 8am daily and finishes at 12.30am during the summer months and at 10pm during the winter months.

The parks constabulary's duties include:

- locking parks
- dealing with fly-tipping in parks
- reporting crime within the parks
- detaining offenders
- assisting the Metropolitan Police at Fulham Football Club matches
- enforcing byelaws and the boroughs dog control orders
- security at park events such as fireworks, the University Boat Race and flower shows
- assisting with the Junior Citizens' Project
- attending park user group meetings
- lost property

- truancy patrols
- recovery of hypodermic needles
- recovery of stolen motorcycles
- securing the landing site for the Helicopter Emergency Service (HEMS)
- assisting the borough's emergency planning unit during major incidents such as major gas leaks and terrorist attacks.

Enquiries about our Parks Constabulary should be directed to:

Inspector Stan Davies

Address: 2nd floor, 77 Glenthorne Road London London W6 OLJ

Telephone: 020 8753 5999

Fax: 020 8753 1500

Email: parksconstabulary@lbhf.gov.uk

Head of Operations and Community Safety Unit

Claire Rai

Address: 2nd floor, 77 Glenthorne Road London W6 OLJ

Telephone: 020 8753 3154

Email: claire.rai@lbhf.gov.uk

For more information about parks in the UK visit:

http://www.direct.gov.uk/en/TravelAndTransport/ExploringtheUK/DG_064868

Constabulary Enforcement Activity in Shepherds Bush Green

Shepherds Bush Green is a popular open spaces in the Borough and as such constabulary are directed to patrol there regularly although there has been 1 no incidents recorded at this location over the last 2 years.

LBHF Parks Constabulary Reportable Parks Incidents "Safer Parks Stats"			
PARK Name	2009	2010	2011
Bentworth Road	1	0	1
Bishops Park	18	11	14
Brook Green	9	9	5
Cathnor Park	6	4	8
Eel Brook Common	37	26	15
Frank Banfield Park	2	6	8
Furnival Gardens	12	5	12
Godolphin Road	0	0	3
Gwendyr Gardens	5	2	4
Hammersmith Park	17	14	21
Hurlingham Park	3	4	4
Lillie Rec	6	3	1
Marcus Garvey	9	1	3
Shepherds Bush Green	0	1	0
Normand Park	18	15	7
Parsons Green	4	1	2
Ravenscourt Park	24	32	28
South Park	6	5	6
Shepherds Bush Green	77	67	113
St Johns Church	0	1	0
St Pauls Open Space	8	4	1
St Peters Square	0	0	0
Starch Green	0	1	0
Wendell Park	4	3	2

Wormholt Park	11	18	11
William Parnell Park	2	5	2
Wormwood Scrubs	16	11	17
Margravine Cemetery	0	1	0
All crimes listed in parks above are those crimes that lead to a Police CAD number being generated.			

Table: Crime statistics for Parks across LBHF

The constabulary is taking a proactive role to minimise anti-social behaviour through addressing the root cause of problems and directing known offenders to social welfare support. The Constabulary maintains a close liaison with the local Safer Neighbourhood Team for the area and if specific information/intelligence is received from them, additional patrols can be directed to the square as required.



Photograph: Parks Constabulary local park Ambassador liaising with the Major

6.2.8 How our contractors manage safety

Quadron Services undertake the operational grounds management and maintenance of the Borough's squares and open spaces.

The Health and Safety at Work Act 1974 imposes a statutory duty on employers to ensure in so far as is reasonably practicable the health and safety and welfare of their employees whilst at work and any other person who may be affected by their business activities. It is therefore our policy to comply, through normal operational activity, with the 1974 Act, all applicable Regulations and other legal requirements relating to health and safety. QSL Health and Safety Policy (Appendix 7)

Health & Safety is amongst the measurable indicators of overall business performance, and our contractors will therefore constantly seek to improve their Health & Safety performance.

Employees also have a statutory duty to take care of themselves and others who may be affected by their acts and omissions. To enable these duties to be carried out, it is our intention to ensure that responsibilities for Health and Safety matters are effectively defined,

assigned, accepted, understood and fulfilled at all levels within the council and users of our services.

The Company's Health & Safety Policy will be reviewed at least annually, and revised as and when necessary. All employees have a responsibility to comply with the provisions for the organisation and arrangements for health and safety as set out in the Company's Health & Safety Policy manual.

There has been no reported incidence of injuries or accidents report by our contractors or to the members of the public for this site.

6.2.9 Safety Information

Information for emergency contacts, public telephones, hospital, and local services is provided on the main open space signage.

Where there are any defects or dangerous structure the public will be informed by a public notice and area cordoned to prevent access or use if necessary.

6.2.10 Objectives

5. All open space facilities and features to be maintained providing a safe, secure and inclusive space.
6. Work with local residents, rangers, police and other stakeholders to increase informal surveillance of the square and enforce open space byelaws.
7. Address all safety issues promptly and effectively through timely monitoring and reporting.
8. Encourage responsible dog ownership through education, provision and maintenance of dog bins, and active enforcement by Parks Constabulary.
9. Enforce safe working practices to protect all open space staff and visitors.
10. Implement the Health and Safety Policy.

6.2.11 Management Actions

#	Description	When	Who	Budget (£000)	Source	Secured
Objective 5. All park facilities and features to be maintained providing a safe, secure and inclusive space						
9	QSL ongoing maintenance works in line with existing GM Contract Specification.	Ongoing	Park Ops	Yes	Revenue	Yes
10	Monthly performance inspection by Grounds Maintenance Monitoring Officers for KPI reporting.	Monthly	Park Ops	Yes	Revenue	Yes
11	Inspections by Small Works Team.	Quarterly	Small Works	Yes	Revenue	Yes
12	Inspections of trees	Ongoing 3 year cycle	Arboriculture team	£30K borough wide	Revenue	Yes
13	Inspection of Playground and Hard Ball Court via external	Quarterly	Parks Ops	Yes	Revenue	Yes

	contractor Quarterly and QSL weekly					
14	Audit of park facilities and features	Annually	Small Works	Staff Time	Revenue	Yes
Objective 6. Work with local residents, rangers, police and other stakeholders to increase informal surveillance of the park and enforce park byelaws.						
15	Establish contact with Shepherds Bush Business Forum and Local Residents Associations to establish Friends of group.	May 2013	Parks Dev / QSL	Officer Time	Revenue	Yes
16	Encourage use of GreenSTAT to gather information about issues in the park.	2013-14	Parks Dev	£0.5k	Capital	No
Objective 7. Address all safety issues addressed promptly and effectively through timely monitoring and reporting						
17	Use of CONFIRM system to record and allocate reported safety issues within the park to relevant officer to rectify. Conways to maintain site until 2015.	Ongoing	Parks Ops	Staff Time	Revenue	Yes
18	Conways H&S reporting of incidents as and when and depot H&S inspection.	Ongoing	Parks Ops / QSL	Staff Time	Revenue	Yes
19	Ensure complaints are addressed promptly.	Ongoing	Parks and Rec	Staff Time	Revenue	Yes
Objective 8. Encourage responsible dog ownership through education, provision and maintenance of dog bins, and active enforcement by Parks Constabulary;						
20	Talk to local Residents Association to host responsible dog awareness campaign with BARK on the estate.	2012	Park Ops	Staff Time	Revenue	Yes
Objective 9. Ensure safe working practices to protect all park staff and visitors						
22	Safety Review of all vehicles and plant used by contractors Conway.	Annually	Parks Ops	Staff Time	Revenue	Yes
23	Conway to work within GM contract specification and existing in house H&S policies.	Ongoing	Parks Ops	Staff Time	Revenue	Yes
Objective 10. Implement the Health and Safety Policy						
24	Review all staff training and update as necessary.	Annually	Park Ops / QSL	Contract	Revenue	Yes

6.3 A Well Maintained and Clean Open Space

For aesthetic as well as health and safety reasons issues of cleanliness and maintenance must be addressed, in particular:

- *Litter and other waste management issues must be adequately dealt with;*
- *Grounds, buildings, equipment and other features must be well maintained; and*
- *A policy on litter, vandalism and maintenance should be in place, in practice and regularly reviewed.*



Picture: Shepherd's Bush Green

6.3.1 Background and Issues

In order to keep abreast of community views about Shepherd's Bush Green toward the management and maintenance of open spaces Hammersmith and Fulham council carried out a major review of the parks and open spaces service in 2006/07 and updated the 1998 resident survey in 2008. Also, the Grounds Maintenance Operations contract was market tested during 2007. Quadron Services won the tender to supply Grounds Maintenance Services to the Borough's park, open spaces and cemeteries in 2007.

6.3.2 Inspection and Maintenance operations

To ensure that Shepherd's Bush Green maintains its high standard of grounds maintenance the site has its own work plan. These activities are summarised in the Maintenance Schedule in Appendix 2.

Routine inspections specifically to address site is safe, secure and tidy is undertaken by the Constabulary. Our contractors and Park Staff are directly responsible for a wide range of maintenance and horticultural operations in the square.

The ground maintenance contract specification also provides a comprehensive and detailed description of the tasks and expected quality of services for maintaining all of the council's open space.

6.3.3 Confirm Infrastructure Management System

To assist in the management of the grounds maintenance contract, the council uses integrated computer software called CONFIRM that is also used to centrally gather information from other services in the council and track issues. Our Grounds Maintenance Team uses CONFIRM for asset and maintenance management particularly to manage maintenance activities, tree work programmes and track customer feedback.

CONFIRM improves service delivery by allowing customers (in this case squares visitors) to log a maintenance or safety issue (e.g. litter, unsafe tarmac surface, dog mess etc) on Hammersmith and Fulham's website, by phone or by email. The system assigns the issue a job number and assigns the task of rectifying the issue to the appropriate council officer. This is known as a confirm enquiry (an example is displayed in Figure 6.1 below). The Enquiry is closed when the job has been completed.

The system is excellent for ensuring complaints and maintenance issues are logged and followed up. Subsequent monitoring of the system allows Parks and Recreation to monitor the type, location and frequency of maintenance issues and complaints. This can help to inform the deployment of resources.

The screenshot displays the CONFIRM software interface for a job enquiry. The window title is 'Job'. At the top, it shows 'Record 1 of 88' and navigation icons. The main form is divided into several sections:

- Job Information:** Job Number (10001), Placed on W.O. (HW01/10001), Current Status (Committed).
- Site Information:** Site (Abbey Road), Asset Id (3001000), Locn (maximum speed limit on lamp column 1).
- Asset Information:** Asset No. (3.00), Description (damaged sign: remove sign, replace and resite next to lamp column), Work Location (outside no 1).
- Priority and Pricing:** Priority (Non Routine Maint - 1 month), Price Factor (Reactive Maint (Non Routine)), Start Date (00/00/0000 00:00:00), Est. Completion (03/01/2001 10:55:05).
- Cost and Customer:** Cost Code (HWB010), Customer (Planning & Transportation (Hway)), Customer Reference.
- Contract and Status:** Pref. Contr. (HW01), Status (0400), Officer (SBS), Estimated Value (55.49), Actual Completion (00/00/0000 00:00:00).

On the right side, there are buttons for Close, Save, Restore, Order, Links, Copy, and Other. At the bottom, there are two tables:

SOR Items		Status Log
Job Item No.	SOR Item Code	SOR Item Name
10	02.20545	Transport any items to and/or from Council depot or other store within a 10 km radius when directed by the Engineer.
20	30.10505	General Operative on County and Trunk Roads: Monday to Friday; normal working hours.

Each row in the SOR Items table has an 'Item Quantity' of 1.00 and a 'Detail' button.

Figure 6.1 Example Confirm Enquiry Form

6.3.4 Litter and Waste Management

Shepherds Bush Green is used extensively by a variety of groups and individuals. Litter is a serious management issue, especially during the weekend when the square is not staffed. A quality standard has been set in the grounds maintenance contract specification which is based on the Environmental Protection Act grades and also provides response times to return a site to acceptable standards.

Aside from the EPA standards, Litterbins are emptied on a daily basis by 10am and are not permitted to remain filled for more than 24 hours by Quadron Services. Quadron staff also litter pick across the square. The Parks and Recreation service work closely with the Constabulary and Communications team to educate, inform and enforce the council's litter policies.

Managing dog waste is also a significant issue across the borough's park and open spaces. Dog bins are emptied by Quadron Services and regular inspections address the disposal of stray dog waste.

Sustainable waste management is a high priority for the Council and Shepherds Bush Green has a role in demonstrating its feasibility across the parks and open space network.

A community green waste facility operates on site.



6.3.5 Graffiti

All graffiti whether reported by the public or by council officers is actioned by the Cleaner Greener team who will remove offensive graffiti within 24 hours and other less offensive within 72 hours. There is a hotline advertised on site and information to report all issues on the park entrance signage.

6.3.6 Flyposting

Unauthorised flyers advertising commercial and community events and services regularly appear tied to railings and attached to trees. This practice is unsightly and contributes to a sense of clutter and untidiness in the open space. Unofficial notices will be removed immediately by Parks Constabulary and Quadron who regularly visit the site.

In order to reduce the prevalence of fly posting the Park and Recreation Service has designed a new temporary notice holder for official notices of works, events, meetings and warnings.

Also, the new main entrance signage has notice cabinets available for community groups to publicise their activities.

6.3.7 Buildings and Assets

There are a range of assets in the open space and buildings all of which are managed and maintained by the council. The council is currently reviewing all buildings within the open space to assess their need.

All assets have been surveyed and registered on the council's EGIS system which provides accurate description of each asset and location which enables it to be identified for maintenance.

In addition the council is currently developing a comprehensive asset management plan that will guide future maintenance programmes and include full life –cycle management and costs.

6.3.8 Small Works Team

In addition to the grounds maintenance contractor, the council employs directly staff that have responsibility for minor repairs and maintenance which includes buildings and furniture in the open space. This team also provide a rapid response for emergency repairs and making site safe.

6.3.9 Objectives

11. Ensure high standards of maintenance for play areas, tennis courts, lawns, bedding areas, trees and shrubs, user facilities and square features.
12. Provide adequate facilities for the disposal of visitor's rubbish and dog waste.
13. Discourage vandalism and graffiti through education, innovative design of facilities and building community alliances.
14. Develop a proactive approach to managing hard assets
15. Monitor the maintenance programme to ensure improvements can be celebrated and weaknesses addressed.

6.3.10 Management Actions

#	Description	When	Who	Budget (£000)	Source	Secured
Objective 11. Ensure high standards of maintenance for play areas, lawns, bedding areas, trees and shrubs, user facilities and park and water features.						
25	Put in place contract for external play area inspection	Nov 2012	Parks Dev	£15K	Revenue	Yes
26	Further develop annual maintenance programme for Conway.	2013	Parks Ops	Staff Time	Revenue	Yes
Objective 12. Provide adequate facilities for the disposal of visitor's rubbish and dog waste.						
27	Review waste management including provision of recycling and dog waste bins on site.	2013	Parks Ops	Officer Time	Revenue	Yes
28	Encourage visitors reduce litter dispose on site through marketing campaign	2013	Park Ops / Events		Revenue	Yes
Objective 13. Discourage vandalism and graffiti through education, innovative design						

#	Description	When	Who	Budget (£000)	Source	Secured
of facilities and building community alliances.						
29	Ensure Parks Constabulary attend local Residents Association and Business Forum Meetings.	2013 onwards	Parks Dev	Staff Time	Revenue	Yes
30	Organise more high profile anti-graffiti campaign and improve response time to remove graffiti.	2013	Parks Dev	Staff Time	Revenue	Yes
Objective 14. Develop a proactive approach to managing hard assets						
31	Implement asset management plan through better life cycle management of new infrastructure and facilities.	2013	Parks Dev	Staff Time	Revenue	Yes
Objective 15. Monitor the maintenance program to ensure improvements can be celebrated and weaknesses addressed.						
32	Grounds Maintenance monitors to review Conway new contract. Conway Manager to attend new Residents Association and Business Forum Meetings	2013 Onwards	Parks Dev	Staff Time	Revenue	Yes

6.4 Achieving Sustainable Spaces

Methods used in maintaining the green space and its facilities should be environmentally sound, relying on best practice according to current knowledge. Management should be aware of the range of techniques available to them, and demonstrate that informed choices have been made and are regularly reviewed: Specifically:

An environmental policy or charter and management strategy should be in place, in practice, and regularly reviewed;

- *Pesticide use should be minimised and justified;*
- *Horticultural peat use should be eliminated;*
- *Waste plant material generated in the square should be recycled;*
- *High horticultural and arboriculture standards should be demonstrated; and*
- *Energy conservation, pollution reduction, waste recycling and resource conservation measures should be used.*



6.4.1 Background and Issues

Policy Context

Parks are the lungs of urban developments. They play a key role in many aspects of sustainability issues. Many of Hammersmith and Fulham's environmental policies with regard to protecting local biodiversity, amenity, air, soil and water quality are contained within H&F Unitary Development Plan and the future Local Development Framework. However, Hammersmith and Fulham's corporate vision underlines the importance of environmental sustainability in the achievement of the Council's wider objectives which are based on the principles of Reduce, Re-use Recycle and to deliver our Biodiversity Action Plan.

As the ground maintenance for Shepherd's Bush Green is outsourced most of the implementation of our sustainability policies are built into the contract for Quadron. They were

chosen as borough's contractor for their similar attitude to sustainability. They are ISO 14001 accredited organisation which assures us compliance to an approved environmental management systems.

6.4.2 Pesticide and Peat Use.

Council or its contractors do not use peat based products on the grounds maintenance contractors. It sources all bedding plants and compost that are verifiably peat free.

We have adopted a policy to reduce the use of pesticides in the maintenance of all squares and open spaces has been adopted.

In keeping with LBHF's aspirations to reduce the use of chemical treatments and to achieve Green Flag status alternative methods of weed and pest control is used where possible.

The aim is to reduce reliance on chemicals by adopting more ecologically sound methods of pest, disease and weed control. While chemical pesticides may be successful in the short term they can cause more problems than they solve. Using chemicals is becoming increasingly ineffective and inappropriate for a number of reasons. For example, most pesticides also kill beneficial natural predators which would otherwise eat pests and keep their populations under control. Pests have also become resistant to some pesticides. Chemicals can cause environmental and human health problems.

The use of pesticides has been significantly reduced from all areas of the open space. Cultural methods have significantly reduced weeding by hand weeding, hoeing and mulching within the Square areas. (Pesticide Reduction Policy Appendix 14)

Chemical treatment for pests and diseases should be the last resort. However some noxious weeds are best managed by chemical treatment to minimise their potential to cause more serious impact such as Japanese Knotweed where controlled and regulated management is required.

The council is currently putting in place a target for an annual 10% reduction in volume of pesticides used over the next 5 years for all contractors which will be closely monitored as all chemical treatment require authorisation from the client.

It is important to prevent pest outbreaks rather than treating them as they occur. Plants need to be maintained at peak health, as stressed plants can easily succumb to pests. Many alternatives to chemical control are simply good gardening practice.

6.4.3 Pests and disease

Selecting appropriate plants that are suitable to both soil and climatic condition significantly reduces incidences of pest and disease. Choosing native plants that have greater natural resistance is also beneficial to the areas biodiversity and limits usage of pesticides or herbicides.

6.4.4 Biological control

Encouraging natural predators and parasites, either alone or integrated into pest control programmes, can prove an effective method of controlling or avoiding pest and disease attack. We encourage biological control through using leaf piles left on site to encourage predators that will help keep pests under control.

6.4.5 Weed control

Generally good regular ground cultivation should be used in preference to chemical herbicides for weed control. In all weed situations it is important to tackle the problem before heavy infestations develop. Equally important is the removal of weeds before seed dispersal. The application of weed killers should be reserved only for real problem situations and the manufacturer's recommendations strictly adhered to.

Annual weeds are easily destroyed by hoeing whilst they are very young and the soil is dry, often perennial weeds such as couch grass and ground elder can be eradicated by forking out, eliminating the need to resort to chemicals.

Keeping mulch topped up is also vital in the fight against weeds, which is generated from central Green Waste store at Wormwood Scrubs (See Green Waste Recycling Appendix 10)

6.4.6 Arboriculture

Trees in Parks and open spaces are important and their benefits are widely known and listed below:

- Help to create a character of site contributing to local distinctiveness and the visual amenity
- Ameliorate environmental extremes by reducing air temperature in summer and increasing air temperature in winter as well as its quality. This lintercepts rainfall, slow run-off and reduces the risk of floods.
- Play a crucial role in sequestering the atmospheric carbon dioxide that fuels global warming.
- Encourage wildlife and used as an educational resource
- Provide shelter and shade for square users and are often the largest trees in neighborhoods.
- May have historic or commemorative value.
- Improve mental and physical health.
- Increase the value of adjacent property (i.e. House prices can be between 10 to 25% higher when near a square).

6.4.7 Tree Policy and management

The management of the trees takes into account national and local government policies that relate to trees and adheres to legislation affecting trees such as the Highways Act, the Town & Country Planning Act and Health & Safety at Work Act. More information See Section 6.2.8.

Policy and principles have been developed to guide the management of trees throughout LBHF:

Tree Policy

- | |
|---|
| <ul style="list-style-type: none">• Maintain the existing tree cover in park and open spaces.• Plan for the replacement of old trees with new tree planting.• Where appropriate increase tree cover with new tree planting to provide trees for the future.• Recognise that trees in squares are a valuable wildlife habitat and ensure that tree management contributes to biodiversity.• Ensure that trees are considered as part of development proposals in squares, or when management plans are created or reviewed, to reflect the importance of trees within the squares. |
|---|

Trees are important to the character of the borough's parks. Therefore removal is only an option if it is dead, diseased or dangerous. During new planting schemes we make it a priority to replace these trees.

Some Trees are mature and have trees which will soon need replacing. We will be reviewing our tree stock replacement plan to ensure that there is continuity of trees in the Square.

6.4.8 Biodiversity and Environmental issues

Parks and green spaces offer people the opportunity to interact with the outdoor and natural world, and LBHF works to manage its squares sustainably and in line with the needs of people and wildlife.

Biodiversity is taken into account at the design stage of any squares improvement schemes.

Where appropriate we will try and increase the diversity of varieties to provide greater interest and wider habitats for wildlife. The immediate environment, landscape and soil conditions are also taken into account. Native species will be used where appropriate.

We do not prune trees unless strictly necessary and we time tree work to avoid disturbing wildlife particularly in the bird nesting season (i.e. we undertake no tree work from March to June.)

The resident group actively introduce new tree planting on a regular basis St Peter's Square, which will provide continuity of our tree stock.

6.4.9 Air Quality Action Plan

Action Plan Measure 26. of the Air Quality Action Plan 2002-2005 states:

Trees in open spaces help to reduce particulate pollution and we will promote the use of trees to help improve local air quality.

6.4.10 Biodiversity Action Plan (BAP)

The BAP provides strategic directions for protecting and improving biodiversity and conservation in the borough. Shepherds Bush Green has no official SINC designation but hold great potential locally in an area of green space deprivation. The Biodiversity Action Plan 2004-2006 states that the adjoining nature of trees in squares creates a series of linked habitats.

It refers to how management techniques affect habitats and species and recommends:

- Carrying out pruning outside of the breeding season;
- Not using chemical pesticides which pose a threat to non target species;
- Carrying out a programme of tree planting to provide trees for the future, taking advantage of the fact that squares offer opportunities to grow larger species and trees from a wider variety of families
- Using consultants to carry out a comprehensive tree survey (including details of their amenity value.)

6.4.11 Local Development Framework (LDF)/Unitary Development Plan

The LDF has recently superseded the UDP policy but retains the goals to enhance and improving our green spaces as an organisation. This will govern strategic planning for achieving these goals across the council. Please refer to the Council's LDF for further details.

6.4.12 Green Waste Recycling

Off site Green Waste Composting at Wormwood Scrubs (See Appendix 10)



Photograph: On site / Wormwood Scrubs

6.4.13 Sustainable use of Vehicles and Machinery

Vehicle use in Shepherds Bush Green is kept to a minimum. All machinery is used correctly and is maintained to a very high standard in line with QSLs commitment to ISO14001 AND ITS Environment and Sustainability Policy (Appendix 8). The council also encourages the contractors to use plant machinery and vehicles to use energy from sustainable sources. Many of the Smaller vehicles are powered using electricity, which has lower carbon emissions. Quadron use category 4 diesel engines on our vans and we use a tracker system on each vehicle so we can monitor usage and best practice

Replacement of park furniture and fixtures is made from sustainable and recycled resources where available. The emphasis is on maintaining existing facilities to a high standard to avoid waste. Water, electricity and gas bills are closely monitored to ensure leaks and efficiencies are addressed promptly.

6.4.14 Environmental procurement

The council promotes financial procurement and seeks suppliers who reduce the global environmental footprint and affiliated with accredited schemes such as Forestry Stewardship Council and Fairtrade.

6.4.15 Water Management

Shepherds Bush Green use of water is minimal. It has no formal seasonal bedding, or water features that are high consumers of water.

Irrigation is also kept to the very minimum.

All standpipes and other associated water pipes are regularly inspected for leakage. All standpipes are capped over the winter to prevent damage caused by extreme cold weather conditions.

6.4.16 Objectives

16. Ensure environmental policies are in place, implemented and reviewed annually.

17. Minimise on site pesticide use.
18. Recycle all green waste.
19. Review the use of energy, water and other materials on site.

6.4.17 Management Actions

#	Description	When	Who	Budget (£000)	Source	Secured
Objective 16. Ensure environmental policies are in place, implemented and reviewed annually.						
33	Update LBHF Biodiversity Action Plan and implement key Habitat and Species site specific plan for Shepherds Bush Green Park.	2013	Parks Dev / BAP Group	Staff Time	Revenue	Yes
Objective 17. Reduce on site pesticide use						
34	Agree and implement 10 % reduction of pesticide and herbicide use and monitor implementation.	Complete Annual review	Park Ops / Conway	Staff Time	Revenue	Yes
35	Agree if any mulching is required on site to be supplied from Wormwood Scrubs Green Waste facility.	2013	Park Ops	Staff Time	Revenue	Yes
Objective 18. Recycle green waste						
36	Review use of recycle bins during peak season at other parks	2013	Parks Ops / Waste	Staff Time	Revenue	Yes
37	Where possible wood from arboriculture works are chipped on site for mulching	2013	Park Ops / Arb	Staff Time	Revenue	Yes
38	If the opportunity were to arise we would like to retain standing dead wood for wildlife habitat and to create sculptures within the park.	2013	Park Ops / Arb	Staff Time	Revenue	Yes
Objective 19. Review the use of energy, water and other materials on site.						
39	Audit of resource consumption particularly building utilities and Conway Vehicles	Annual	Park Ops	Officer time	Revenue	Yes

6.5 Conservation and Heritage

Particular attention should be paid to the conservation and appropriate management of:

- *Natural features, wildlife and flora;*
- *Landscape features; and*
- *Buildings and structural features.*
- *These features should serve their function well without placing undue pressure on the surrounding environment.*

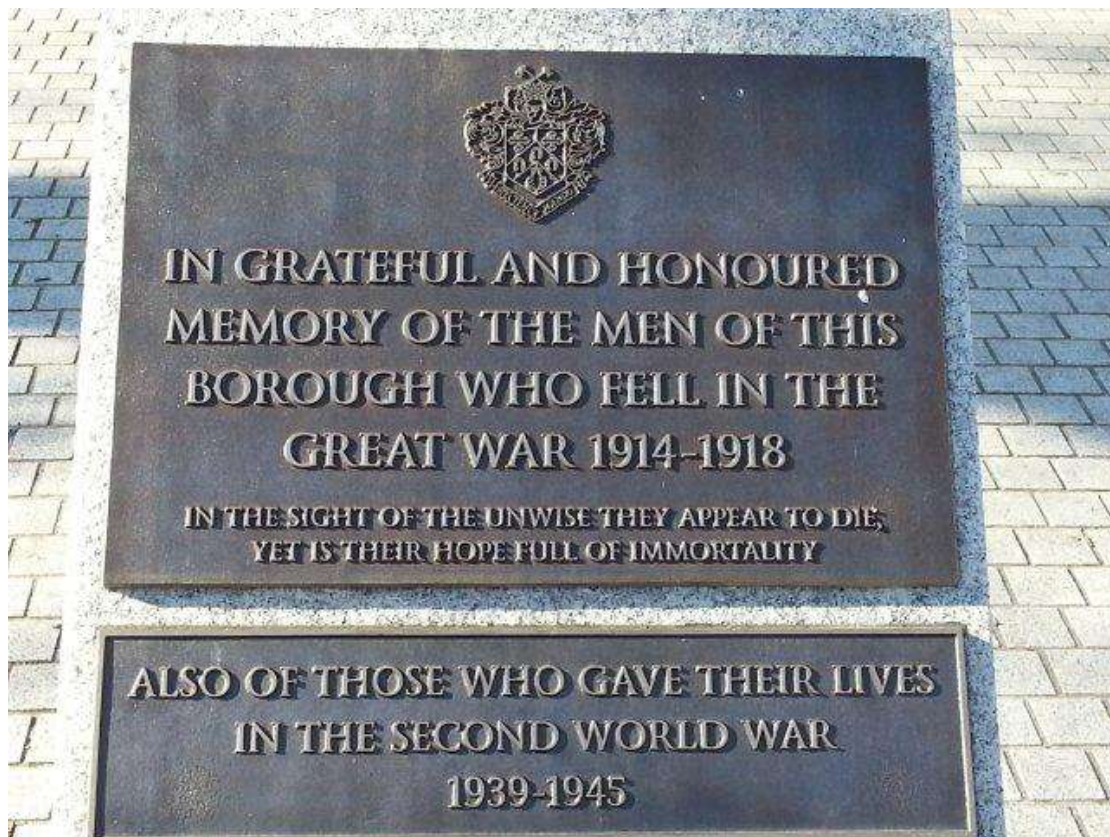


6.5.1 Background

Hammersmith and Fulham Council recognises the importance of conservation and heritage for green spaces to people living in the borough and pursues policies to protect sites of interest from development, and manages its open spaces with nature conservation and preservation of historic buildings and features in mind.

In terms of wildlife and conservation value, Shepherd's Bush Green is important for its size and equally important for its heritage value but is an integral character of the local area.

6.5.2 Heritage of Shepherds Bush Green



6.5.3 Ecology and conservation

As with most open spaces, Shepherds Bush Green is invaluable habitat with variety of local important resource for fauna and as part of the environmental corridor that open spaces provide across the borough and regionally.

Areas where the ecological value of the open space has been improved include:

- Planting more native trees along the St Peter's Square Club boundary
- More native under planting to increase habitat and feeding opportunities for birds and insects.
- Introduce more Bird and bat boxes.

There have been numerous improvements to the ecology of the square already. Opportunities for future improvements to the square ecology include:

- Maintaining tree cover in accordance with the tree management and replanting strategy.
- Increasing community awareness of ecological issues using interpretation signs.
- Continuing to reduce reliance on chemical herbicides and pesticides and using more ecologically sound methods of control.
- Making leaf piles that can be used for compost. It is suggested these might be located under mature trees.

6.5.4 Management of Trees

Trees in the borough's parks and open spaces are managed by the Arboricultural Section of the Highways & Engineering Division (Environment). This subject is also covered in detail in Section 5 for reference)

The open space has many trees of interest These provide the main structure and form of the open space giving it its unique character that users are familiar with today.

This open space is the only open space in the borough with the following trees:

- Acacia baileyana 'Purpurascens' (Australia)
- Campsis radicans (USA)
- Indigofera tinctoria (Africa, Asia)

And is the only other park outside of Bishop's Park to have:

- Sequoiadendron giganteum (USA)

6.5.5 Built environment

The mixture of 1960 high and medium rise concrete complex modernist estate

6.5.6 Objectives

20. Protect and enhance the biodiversity value of Shepherds Bush Green.
21. Conserve the historic character, design, layout and relationship to surrounding environment.
22. Educate the public on the habitats, species and features of the nature conservation area around the open space.

6.5.7 Management Actions

#	Description	When	Who	Budget (£000)	Source	Secured
Objective 20. Protect and Enhance the Biodiversity value of the park.						
40	Implement and update the BAP for the borough as a whole and ensure this is being implemented within the park.	2013-14	Parks Dev / BAP Group	Officer time	Revenue	Yes
41	To promote biodiversity and nature conservation with more native planting and or sympathetic management of the existing landscape.	2013-14	Parks Dev / BAP Group	Officer time	Revenue	Yes
42	Encourage species at risk such as stag beetles by setting more log piles.	2013	Parks Ops / BAP Group	£1K	Capital	Yes
43	Conduct full ecological survey of fauna and flora.	2013-14	Parks Dev	£10K	Natural England	No
Objective 21. Conserve the character, design, layout and relationship to the surrounding environment.						
44	To ensure any new planting is sympathetic to the surrounding environment of the park and is in keeping with the existing structure of the park	Ongoing	Parks Dev	Officer time	Revenue	Yes
Objective 22. Educate the public on the habitat, species and features of the nature conservation area of Shepherds Bush Green OS						

#	Description	When	Who	Budget (£000)	Source	Secured
45	Improve publicity of local environmental initiatives in or around Shepherds Bush Green. Potentially working with established Third Sector Partners in the borough.	Ongoing	Parks Dev	£1k	Revenue	Yes

6.6 Community Involvement

Park management authorities should actively pursue the involvement of members of the community, with representation of as many square user groups as possible. Management should be able to demonstrate:

- *Knowledge of the user community and levels and pattern of use;*
- *Evidence of community involvement in square management and / or development and results achieved; and*
- *That there are appropriate levels of provision or recreational facilities for all sectors of the community.*



6.6.1 Background and Issues

The open space is a well-loved popular community asset and local residents as well as users are actively involved in continuous improvement of the site.

Recent resident surveys (GreenStats) highlighted that residents were most satisfied

6.6.2 Community involvement

The community has been involved in the development of the open space. The community's continued involvement is essential to ensure it remains a popular destination by those who use it.

The community must remain involved through:

- The provision of information to them about activities, features and ways to get involved.
- The provision of information to users about changes in the square or to management strategies that might effect them.
- The involvement of members of the community who represent as many square user groups as possible.

- The development of community partnerships through outreach, events and volunteering programmes encompassing local schools, community groups and businesses.
- Continued to develop a formal Friends Group to pro-actively create a cohesive group, representative of the local population.
- Active promotion of the use of the square as a community, educational, ecological, sporting and recreational resource for the whole community.
- A customer focused quality open space service.
- The development of regular events for and with the community.

6.6.3 Stakeholders and Volunteers

Shepherds Bush Green is a well-used community facility that provides opportunities for local people to take part in a number of open space activities. The support of local people, user groups, partners and other stakeholders is recognised by the Council as fundamental to the success of the facility as a safe, healthy, clean and sustainably managed open space.

There are also other stakeholders and volunteers in the Shepherds Bush Green area who are also involved (directly and indirectly) in the use, management and promotion of the Square. Hammersmith and Fulham is seeking to further develop partnership opportunities including:

- National, regional and local Parks and open spaces, environmental and heritage agencies;
- Development organizations and agencies;
- Funding Agencies;
- Other Friends Groups;
- Local ward councillors;
- Recreational and Sports Organisations;
- Educational establishments including schools;
- Local businesses;
- Community and voluntary groups, particularly those for and representing children and young people, older people, the disabled and ethnic minorities;
- Police and community Safety Agencies.

6.6.4 Management of Stakeholder Groups

Until recently Parks and Open Spaces have been a focus for a number of formal and informal groups including Residents Associations (representing residents in defined streets or a geographical area) and Amenity Societies (interested in the borough's built heritage and natural features).

Although this has remained the case with Shepherds Bush Green, the council is very supportive of this group in its current format as it very much typifies the aspiration for stakeholder groups:

1. Inclusive and representative – welcomes all users
2. Participatory – volunteers in community gardening
3. Self sufficient – supports its own activities

In 2009 the Parks Development Team has been working with the local community and existing groups to formalise Friends of Park Groups at key sites which if appropriate this site will to adopt. There are currently 17 such groups across the borough.

A model constitution has been developed and Friends Groups work, through a volunteer working group, adapt the document to the groups needs. The constitution assists the group in defining their objectives, membership and how the group will be administered.

Alongside the constitution is a Memorandum of Understanding between the Council and the Friends Group. This important document is signed by the Council and Officers of the Friends Group and outlines the working relationship between the Council and Friends Group. Friends Groups are guaranteed two site walkabouts to discuss operational issues and two evening meeting to discuss strategic and wider issues each year as well as other in-kind support.

LBHF Parks Development Team will be working with the existing Edwards Woods Estate Residents Association to establish a formal Friends of Shepherds Bush Green Park during 2012.

6.6.5 Friends of Parks Forum

A dedicated forum to encourage closer working relationships between the other various park and open space user groups has been established. This will hopefully enable more sharing of best practise amongst friends groups as well as greater strategic development of common policies and management of borough wide issues.

The first Friends of Parks Forum was held in November 2009 and since then the LBHF have been working with Groundwork London to help develop a friendsof.org.uk web portal to help park friends share experiences and good practice and communicate with a wider audience see (Appendix 9)

6.6.6 Park User Consultations

The management plans have been derived from the Park Resident User, MORI Poll surveys conducted and comments received by local residents. We consider management plans as live documents which will be updated annually to measure achievements against targets.

The Parks and Culture Division works closely with the Arboriculture Officers to play inspirational and proactive role by using trees and woodland as an important educational resource for local communities and children.

The council consult the community in a variety of ways including carrying out events where people can contribute ideas for planting and encouraging people to contact us by letter, telephone or email to discuss any tree issue.

We encourage people to use an online reporting system to report a problem with a tree in a square or make a request for tree work or tree planting.

We are seeking to organise regular guided tree walks in all of our parks and open spaces. Signs, leaflets and other interpretative material are used to inform the public matters relating the Square. Where appropriate newspapers and websites provide a useful tool for more borough wide coverage.

6.6.7 GreenSTAT

In addition to the Resident Survey the Parks and Recreation team also use a visitor survey system of parks and green spaces known as Greenstat. Greenstat is a comprehensive survey system for parks and green spaces, examining the nature of people's visits, their perceptions and satisfaction.

Develop and managed by parks charity GreenSpace, GreenSTAT allows people to comment on either their whole parks service or any individual square or green space.

Respondents can complete a questionnaire online at www.greenstat.org.uk

Alternatively, the Parks and Recreation service can distribute hard copy questionnaires in their local areas, or use them for on-site and off-site interviews.

6.6.8 Feedback and Complaints

The council is aware that there will be occasions that general enquiries and feedback is essential process of ensuring services and facilities meet public expectation. The council has recently restructured its services with an emphasis on putting 'Residents First'.

There is a dedicated centralised call centre and enquiries are directly forwarded to the relevant section. All square enquiries and complaints are answered promptly by the responsible officer within 15 working days.

1. All correspondence should be directed to parks@lbhf.gov.uk
2. Residentservicescomplaints.gov.uk
3. Telephone 020 8753 3226

6.6.9 Objectives

23. Work closely with existing stakeholders and partners to address local residents' needs, aspirations and concerns and encourage a sense of ownership.
24. Identify potential users and encourage them to participate in the development and management of the square.
25. Consult the wider Hammersmith and Fulham community about future plans, proposals and current projects in the square.
26. Provide support to the Friends of St Peter's Square to ensure successful grant applications for improvements.
27. Foster closer relationships with local schools and institutions.
28. Encourage a complementary working relationship between the council and community volunteers.

6.6.10 Management Actions

#	Description	When	Who	Budget	Source	Secured
Objective 23. Work closely with existing stakeholders and partners to address local residents' needs, aspirations and concerns and encourage a sense of ownership.						
46	Develop a Friends Group for the park. Potentially using data from existing consultation on developing the Playground on site as well as local Residents Associations or Business Forums.	2013-14	Parks Ops	Staff time	Revenue	Yes
47	Council officer attendance at Stakeholder Group meeting to develop closer working relationship in maintaining and developing the park.	Bi annual	Parks Dev	Staff time	Revenue	Yes
Objective 24. Identify users and encourage them to participate in the development and management of the park.						
48	Advertising of Stakeholder groups within the park, local press and well as council and external websites to promote local community involvement in the park.	Ongoing	Parks Dev	Staff time	Revenue	Yes
Objective 25. Consult the wider Shepherds Bush Green OS community about future plans, proposals and current projects in the park						

#	Description	When	Who	Budget	Source	Secured
49	Advertising parks improvements within the park, local press and website including how to provide feedback and comments.	Ongoing	Parks Dev	Staff time	Revenue	Yes
50	Mailshots to local residents within the immediate area of the park.					
51	Work with existing Third Sector Partners on some interventions on site to stimulate interest.					
Objective 26. Provide support to Friends of Shepherds Bush Green OS to ensure successful grant applications for improvements.						
52	Work with stakeholder groups to support their grant applications .	As required	Parks	Staff time	Revenue	Yes
Objective 27. Foster closer relationships with local schools and institutions.						
53	Develop more formal collaboration with local schools for environmental learning on site through work with Groundwork London and Hammersmith Community Garden Association.	2013	Parks Dev	Staff time	Revenue	Yes
Objective 28. Encourage a complementary working relationship between the council and community volunteers.						
54	Develop a framework agreement for volunteers using resources and facilities in the park.	2013	Parks Dev / QSL	Staff time		
55	Develop new ways of promoting and supporting volunteer work days with Third Sector Partners.	Ongoing	Parks Dev	Staff time	Revenue	Yes
56	Develop a more formal Friends Group and adopt MOU – through annual review of Groups constitutions.	2013-14	Parks Dev	Staff Time	Revenue	Yes

6.7 Marketing

Is there:

- *A marketing strategy in place? Is it in practice and regularly reviewed?*
- *Good provision of information to users e.g. about management strategies, activities, features, ways to get involved? and*
- *Effective promotion of the square as a community resource.*

6.7.1 Background and Issues

Shepherds Bush Green is currently promoted, along with the borough's other parks and leisure facilities, through the various council initiatives including signage outside the open space, pamphlets for potential users, events calendar, and information on the council website.

Word of mouth is also important. Marketing of the square currently concentrates on effective signage leading potential users to the square and the promotion of specific events and sports facility availability. A Marketing Strategy is being developed to address the effective marketing of all Parks and Recreation Grounds in the borough. Its implementation specific to Shepherds Bush Green will be reviewed and implemented in conjunction with this Management Plan.

6.7.2 Events and activities

The LBHF Events Team will seek to promote the space to the local community for events.

6.7.3 Signage and Information

LBHF uses Estate notice boards, parks notice boards and leaflet circulars to Communicate with the parks users.

6.7.4 Marketing and Communication Plan

The Parks Marketing and Communication Plan is available from H&F Parks and Recreation. Key objectives of the plan are:

- To increase usage of H&F's Parks and Open Spaces by providing timely and accurate information about Parks and open spaces, their features and facilities and management;
- To effectively advertise events in H&F's Parks and Open Spaces and attract other activities appropriate to the Square and surrounding community;
- To promote positive news about the Parks and open spaces to a wide audience;
- To ensure all parks staff and volunteers receive adequate marketing training;
- To regularly review customer satisfaction with the condition of sports pitches, and facilities within H&F's Parks and open spaces.

6.7.5 Objectives

29. Develop and implement Borough Wide Parks Marketing Strategy

30. Provide information about the square in a variety of media both on and off site

31. Actively promote the features and facilities of the square and encourage community ownership

6.7.6 Marketing Actions

#	Description	When	Who	Budget	Source	Secured
Objective 29. Implement Borough Wide Park Marketing Strategy						
57	Benchmark other Authorities park marketing strategy	2010	parks dev	officer time	Revenue	yes
Objective 30. Provide information about the park in a variety of media both on and off site						
58	Further development of the LBHF website.	Ongoing	Parks Ops	2k	Revenue	Yes
59	Develop a marketing plan with the communications team to promote the park in the local press.	2012	Parks Dev	Officer time	Revenue	Yes
60	Display local relevant information about park matters	Ongoing	Parks Ops	Officer time	Revenue	Yes
Objective 31. Actively promote the features and facilities of the park and encourage community ownership						
61	Utilise the marketing strategy to promote new features and facilities.	Ongoing	Parks	Officer time	Revenue	Yes

6.8 Management

A Green Flag site must have a management plan. It must set out the balance between all the priorities, policies and partners that apply to a particular green space. It should establish a timescale for putting the objectives into practice. It should also identify the contribution the site is making towards an area's wider strategic aims. It must be actively implemented and regularly reviewed.



6.8.1 Current Status and Issues

St. Peter's Square is owned and managed by Hammersmith and Fulham Council and is accessible to the general public year round. This Management Plan for St. Peter's Square has been developed to advance the aspirations of Hammersmith and Fulham Council and those of our local communities. The management plan has been developed around our commitment to the objectives of Green Flag and is key to the implementation of our Parks and Open Spaces Strategy (2007). It provides a clear and coordinated management strategy based on the characteristics of the site and the communities that use it. It will be a living document, updated annually to reflect new knowledge, successes and failures.

6.8.2 Resident Services – Management Structure

Residents Services was established in 2007 under the new Conservative administration bring together complementary community facing council services under one department. Originally Residents Direct (contact centre activities), Arts and Events and Parks and Recreation formed the new directorate. In March 2009 Community Safety (Constabulary, Safer Communities and crime prevention teams) joined the department.

The Parks and Recreation Team, located in the Hammersmith Town Hall, King Street, coordinate the management of the Park. The Service was established in 2007 to manage the Grounds Maintenance Contract that was being market tested to improve service delivery. Also the new Parks Development Team manages the development and improvement of the

open space network in partnership with the local community. The Environment department previously undertook grounds Maintenance and Development activities.

The *Head of Parks and Recreation* is the head of service and oversees the ongoing development and maintenance of the borough's parks, open spaces, cemeteries, sports facilities and leisure centres.

The *Parks Development Manager* is responsible for developing and implementing the Strategic Vision for the borough's Parks and Open Spaces and delivering improvement projects in open spaces. *Parks Project Officers* work with local stakeholders, including Friends of Parks Groups to ensure that parks meet the current and future aspirations of all users.

Grounds Maintenance operations are managed by the *Parks and Recreation Operations Manager* who is responsible for managing the Grounds Maintenance Contract and the *Grounds Maintenance Monitors, Small Works Team, and Cemetery Manager*.

Quadron Services Limited delivers grounds Maintenance and horticultural works. The same dedicated work group based in the park generally carries out the day-to-day management and maintenance of The Park. Quadron Service's Area Managers oversee the workforce that provides the litter picking and horticultural works element to the Open Space and they place particular emphasis on the interface between Hammersmith and Fulham and the Park's users.

The Parks Constabulary, based upstairs from the parks team in Glenthorne Road, patrol the Park and are responsible for enforcing the Park Byelaws and providing a visual presence enhancing the sense of safety and security in The. They are also responsible for locking and unlocking the park, resolving disputes and issuing fixed penalty notices for failing to pick up after dogs, littering and antisocial behaviour.

The Parks and Recreation Management Structure relevant to St. Peters Square is displayed in Table 6.1 below. External partnerships are also noted including the Grounds Maintenance Contractor, Quadron Services Limited. Internal partners include the arboriculture team and the Parks Constabulary.

See Appendix 6 for the overall management structure and responsibilities for the Hammersmith and Fulham Parks and Recreation Service.

6.8.3 Parks Asset Management Strategy and Asset Management Plan

The Parks Asset Management Strategy is designed to ensure that all assets related decisions align with the Parks Departments priorities, as laid out within this Management Plan, and support service delivery objectives.

In order for Hammersmith and Fulham Council's Parks Department to be able to further enhance the quality of parks and maintenance levels of service being delivered to the community, it is essential for a Parks Asset Management Plan (AMP) to be implemented. This will, in turn, provide evidence for informed decision making on maintenance schedules and will also increase the efficiency and effectiveness of the maintenance and capital budgets.

The Parks Asset Management Strategy and Plan will guide the planning, acquisition, maintenance, renewal and disposal of assets as laid out in the yearly Works Plan. The Works Plan has been based on a primary assessment of Council's parks hard assets including:

- The physical condition of existing assets.
- Forecasted asset life expectancies in years.
- Forecasted valuation of existing assets.
- Projected annual maintenance costs for each asset category.

6.8.4 Confirm Infrastructure Management System

To assist in the management of the grounds maintenance contract, the council uses integrated computer software called CONFIRM that is also used to centrally gather

information from other services in the council and track issues. Our Grounds Maintenance Team uses CONFIRM for asset and maintenance management particularly to manage maintenance activities, tree work programmes and track customer feedback.

CONFIRM improves service delivery by allowing customers (in this case parks visitors) to log a maintenance or safety issue (e.g. litter, unsafe tarmac surface, dog mess etc) on Hammersmith and Fulham's website, by phone or by email. The system assigns the issue a job number and assigns the task of rectifying the issue to the appropriate council officer. This is known as a confirm enquiry (an example is displayed in Figure 6.1 below). The Enquiry is closed when the job has been completed.

The system is excellent for ensuring complaints and maintenance issues are logged and followed up. Subsequent monitoring of the system allows Parks and Recreation to monitor the type, location and frequency of maintenance issues and complaints. This can help to inform the deployment of resources.

Figure 6.1 Example Confirm Enquiry Form

The screenshot shows the CONFIRM software interface for a job enquiry. The window title is 'Job'. The top bar shows 'Record 1 of 88'. The main form is divided into three tabs: 'Job', 'Additional', and 'Current Status'. The 'Job' tab is active, showing fields for Job Number (10001), Placed on W.O. (HW01/10001), and Committed. Below these are fields for Site (Abbey Road), Asset Id (3001000), Asset No. (3.00), Description (damaged sign: remove sign, replace and resite next to lamp column), Priority (Non Routine Maint - 1 month), Price Factor (Reactive Maint (Non Routine)), Cost Code (HWB010), Customer (Planning & Transportation (Hwy)), Pref. Contr. (HW01), Status (0400), and Officer (SBS). The 'Additional' tab shows fields for Locn (maximum speed limit on lamp column 1), Work Location (outside no 1), Start Date (00/00/0000 00:00:00), Est. Completion (03/01/2001 10:55:05), Customer Reference, Estimated Value (55.49), and Actual Completion (00/00/0000 00:00:00). The 'Current Status' tab is empty. On the right side of the form are buttons for Close, Save, Restore, Order, Links, Copy, and Other. At the bottom, there is a table for SOR Items and a Status Log.

Job Item No.	SOR Item Code	SOR Item Name	Item Quantity
10	02.20545	Transport any items to and/or from Council depot or other store within a 10 km radius when directed by the Engineer.	1.00
20	30.10505	General Operative on County and Trunk Roads: Monday to Friday; normal working hours.	1.00

6.8.5 Arboriculture – Management of Trees

Trees in the borough's parks and open spaces are managed by the Arboricultural Section of the Highways & Engineering Division (Environment).

The diversity of types of trees and their habitats mean that they are managed in different ways. The tree stock is managed to ensure that all individual or groups of trees are kept in a safe condition, are suitable for the location and offer as little nuisance as possible to neighbours or users of the park in which they are located.

Consideration is given to Health and Safety foremost but environmental and visual considerations are important factors in the management of this valuable resource.

The management of the trees takes into account national and local government policies that relate to trees and adheres to legislation affecting trees such as the Highways Act, the Town & Country Planning Act and Health & Safety at Work Act.

Tree Inspections/Surveys

The council fulfils its legal obligations to regularly inspect and maintain trees in public places by carrying out a full survey of all trees in parks every three to four years. There are also

more frequent, less detailed inspections in areas of higher public use such as along footpaths and around sports pitches and play areas.

The Arboricultural Section of the Highways & Engineering Division has just finished compiling a detailed database of all trees in parks and open spaces and is developing a programmed maintenance schedule to ensure that these trees are inspected and maintained at an equivalent level to the borough's street trees, which are currently inspected and pruned every three to four years. The Arboricultural Section also aims in the long term to develop a schedule that will see every tree subjected to a brief, annual inspection.

The full detailed surveys of trees in parks will be professional tree inspections carried out by an experienced arboriculturalist to the standards specified by Lantra (the Sector Skills Council for the environmental and land-based sector). These surveys will be by our own staff or external qualified arboriculturalist and will be used to guide the day to day and long term management of all significant individual or groups of trees within parks. Special annual safety checks will be carried out on individual trees known to be in poor condition.

The new contract for grounds maintenance services awarded to Quadron Services Ltd includes specifications for basic tree inspections and maintenance in parks as below:

- Basic tree inspections shall be carried out at three intervals during the year: February/March; May/June; September/October.

Works carried out at the time of inspection shall include:

- Removal of Suckers and Epicormic growth.
- Crown Lifting to 2m over grass areas and 3m over paths and roadways.

The Parks Department and the Arboriculture Section have recently been working towards standardising the inspection scheduled for Park Trees across the Borough. It is anticipated that this will be rolled by March 2012.

6.8.6 Objectives

31. To continue to bid for capital and 106 funding for money toward improvements. When it is available, it will be allocated on a basis of priorities for improvements.
32. Ensure sufficient budget allocated to maintain the park to the standards of this management plan
33. Encourage greater user ownership and involvement in facility management to promote responsible use

6.8.7 Management Actions

#	Description	When	Who	Budget (000)	Source	Secured
Objective 31. To continue to bid for capital and 106 funding for money toward improvements. When it is available, it will be allocated on a basis of priorities for improvements.						
1	Develop closer working relationship with planning to secure S106 funding.	ongoing	Parks dev	TBC	Various local developments	TBC
Objective 32. Ensure sufficient budget allocated to maintain the park to the standards of this management plan						
2	Conway will carry out site maintenance during the 2 year defects liability period the LBHF Parks Team will monitor resource allocation during this period to ascertain resource	2013-15	Parks Ops	Contract	Revenue	Yes

	required when maintenance contract taken over by in house contractors.					
Objective 33. Encourage greater user ownership and involvement in facility management to promote responsible use						
3	Review existing building leases (including on site restaurant)	2013	Parks Ops	Officer time	Revenue	Yes

7. Monitoring and Plan Review

This management plan has been adopted in 2011 and will act as a working document for the management of Shepherds Bush Green over a ten-year period.

The day-to-day management of the open space and the progress of individual development projects will be monitored regularly with LBHF Parks Staff, other stakeholders and the Local Stakeholder groups

The Action Targets presented in this Management Plan are reviewed annually in October with stakeholders and updated to reflect recent developments. Information and Identified action areas will inform the budget process in December.

A formal review of this management plan will be undertaken in 2016 when the plan will be amended to advance the development and management of the Square until 2020.

8. References

Hammersmith and Fulham Environment (2008) *Parks and Open Space – A survey of residents in Hammersmith and Fulham*;

Hammersmith and Fulham Environment (2006) *Parks and Open Spaces A study of the supply*

9. Appendices

APPENDIX 1:	Inspection Schedule
APPENDIX 2:	Maintenance Regime
APPENDIX 3:	Corms Report
APPENDIX 4:	Park Plan
APPENDIX 5:	Park Management Structure
APPENDIX 6:	Park Byelaws
APPENDIX 7:	Health and Safety Policy
APPENDIX 8:	Environmental Sustainability Policy
APPENDIX 9:	Marketing & Community Involvement
APPENDIX 10:	Green waste recycling
APPENDIX 11:	Lantra Training
APPENDIX 12:	Flora Survey
APPENDIX 13:	Asset Condition Survey
APPENDIX 14:	Pesticide Reduction Policy
APPENDIX 15:	Playground Inspection

Appendix 1 Inspection Schedule

Who	What	When	Action
Park Constabulary	Anti-social behaviour impacts Furniture and fittings – bins, benches Play areas	Daily informal checks	Action Anti social through fixed penalty notice Report to Monitoring officer Cordon off dangerous areas or equipments
ARD Playgrounds	Play facilities	Quarterly comprehensive	Produce monthly reports with priority. Action repairs when instructed by Client
Monitoring Officer	All facilities and furniture	Minimum monthly and ad hoc to investigate issues or faults	Instruct Works team to repair dangerous faults or programme repairs, inform Parks development team if major development
Parks Development Officer	All facilities and furniture	Biannual	Programme major renovation as part of capital budget
Friends of Ravenscourt Park	All facilities including furniture and fittings	Biannual walkabout	Report issues to LBHF to action
Quadron Services LTD	All facilities furniture and fittings	Daily	Reports to client to action. Amend work schedule to address grounds maintenance issues if within contract requirements

Appendix 2 Maintenance Regime

General

Ground maintenance required by the Council broadly comprises, grass cutting, grass edging, maintenance of horticultural features, planting of bedding plants and bulbs, weed control, collection and removal of litter, refuse and abandoned Waste, maintenance and marking of sports pitches and school grounds, erection of equipment, renovation of grass areas, seeding and turfing, planting and cultivation of shrubs and roses, leaf clearing, weed killing, fertilising and top dressing, burials, tree planting and low level maintenance, special events, toilet cleansing, ice and snow clearance, emergency work and natural habitat maintenance.

Grass

Establishment of Standards

The standards required shall be established by setting out one or more or a combination of the following:

- Minimum height of grass after cutting and maximum height of growth allowed.
- Type of grass cutting machine.
- Indicative frequency of cutting.

Minimum Height of Grass after Cutting and Maximum Height before Cutting. The height of cut or minimum height of cut is determined to be the height of the cutting blades of the appropriate machine above a true level surface. In determining the height of cut, all rollers/skids will be clean and free from mud and build-up of cuttings.

Maximum height is determined to be the maximum height of 90% of the grass or vegetation which is of a non-woody nature in any one Location within the Contract Area.

The indicative number of cuts is a guideline to the minimum number required to meet the performance standards.

Type A - General Amenity and Sports Fields

This category relates to general amenity areas that provide recreation use and can be marked out and used for organised sport. Such areas must be cut with cylinder mowers, which can be multi-unit ride-on-type mowers or tractor-mounted gang units; cylinders must be fitted with 4 to 6 cutting blades, giving between 27 and 36 cuts per linear metre.

Period Height of Cut

All Year Round 15 – 25mm

(Indicative number of cuts is a minimum of 30)

Sports facilities to be maintained are:

- Bowling Greens
- Outdoor Courts - Hard Surfaces for Tennis, Basketball
- Multi-use Games Areas
- Running Tracks/Athletics for School Sports

Playing Fixtures

The playing season is April to September, but the actual starting day may vary; the Authorised Officer shall notify the Contractor of the exact dates. During the playing season, the greens must be ready for play by 12:00 noon on weekdays, unless otherwise instructed by the Authorised Officer. On weekends and public holidays, the greens shall be ready for play by 10:00 hours.

During the playing season:

- the position of the rinks is to be altered on a daily basis either in accordance with the marks or on a one metre rotational basis; and
- the direction of play must be altered at least once per week.

Mowing

The green shall be cut using an approved 450-500mm pedestrian-operated 'greens' mower having no less than ten cutting blades on the cylinder, in such a way that a 'striped' effect is created diagonally across the playing surface with alternate cuts rotated at 90 degrees. A collection box must be used at all times and all clippings removed immediately from site for proper disposal or for reclamation/recycling as approved by the Authorised Officer.

The height of the grass shall be maintained as follows:

Period Height of Cut

October-March 5 – 10mm

May-September 3 – 5mm

In April, the Contractor shall gradually reduce the cutting height in several stages from 10mm to 5mm.

During the period May to September inclusive, the green must be cut every other day, including weekends ensuring that there is no ribbing or bruising of the sward. *(Indicative number of cuts a year is a minimum of 80)*

Edge Green

The green edge must be trimmed in conjunction with every second cut, using long arm shears to maintain a distinct edge. Following trimming, the Contractor shall immediately collect arisings and remove them for proper disposal/recycling. *(Indicative number of operations a year is a minimum of 40)*

Banks and Surrounds

The Contractor shall hand-shear grass banks and surrounds of the greens at weekly intervals during the playing season.

Ditches

The Contractor shall clean the bowling green ditches at weekly intervals during the playing season and at monthly intervals during the remainder of the year. All litter, leaves, refuse, abandoned Waste and other debris from this operation shall be immediately removed for proper disposal.

Rolling

The green shall be rolled using a Sisis 'Trulevel' roller or similar machine approved by the Authorised Officer (machine to be between 50-100kg in weight), as often as required to maintain density and evenness. *(Indicative number of operations a year is a minimum of 24)*

Scarification during the Playing Season

During the playing season, the Contractor shall carry out light scarification operations, commencing 20 working days after the start of the season and at regular intervals thereafter, to remove thatch and runners without disturbing the soil surface. A pedestrian-controlled scarifier must be used and all arisings must be boxed off and removed from site for proper disposal/recycling. The depth of tine penetration shall not exceed 3mm.

(Indicative number of operations a year is a minimum of 6)

Aeration during the Playing Season

The green shall be sarrell-rolled as often as required to reduce surface compaction and maintain infiltration rate. *(Indicative number of operations a year is a minimum of 20).*

Tennis and Ball Court Maintenance

The Contractor shall sweep courts, collect all arisings and remove them for proper disposal as often as required to maintain a non-slip surface to the courts. *(Indicative number of operations a year is 12).*

The Contractor shall collect, remove and dispose of leaves, blossom and any other deleterious matter as often as required to maintain a clear surface. Blowers may be used to

assist with this operation. (*Indicative number of operations a year is a minimum of 52*)

Hedges

All hedges must be cut using mechanically operated shears or reciprocating handheld cutters. When cutting hedges, the severity of cut shall be such that the current year's growth is removed back to the old wood, so that a level surface and uniform height can be achieved.

Beds and borders

Annual beds and borders comprise roses, shrubs and herbaceous plants and shall be maintained in a way that presents an attractive amenity and allows development of plants to be in keeping with the type, shape, size and aspect of the beds.

Grass edges shall be trimmed with long handled shears or other method to maintain the cut line of the edge and is included as part of the grass cutting operations in 100 Series Grass Cutting Specification. Strimmers may not be used.

All works undertaken in the maintenance of shrubs, roses, herbaceous borders or similar features must be carried out in accordance with good horticultural practices as prescribed by the RHS and the relevant British Standards.

Rose Beds and Borders

The Contractor shall prune all plants in accordance with the appropriate Royal Horticultural Society and British Standards guidance. Following any operations on rose beds, all prunings, weeds, debris, litter and abandoned Waste must be immediately removed from site for proper disposal. The Contractor shall remove any shoots or branches causing obstruction to any pedestrians or vehicles or footpaths or other hard areas when undertaking any operations on rose beds.

Each year, the Contractor shall undertake the following rose bed operations:

Shrub/Herbaceous Planting

The Contractor shall first cultivate the ground prior to the planting of any plant material. Before planting, and prior to the removal of any containers, plants within each group shall be set out in an informal manner, avoiding straight lines at all times unless otherwise instructed by the Authorised Officer.

Planting holes shall be large enough to accommodate the entire root system, and the sides and base of such pits shall be loosened up.

Excavated topsoil shall be broken down and mixed with approved planting compost at the rate of 1 x 80 litre bag per 12 planting holes.

Following the above operations, plants shall be carefully removed from their container. If roots appear pot-bound, they should be carefully teased out without causing any damage. On no account shall any plant's root system be cut back. The plant shall be positioned in the pit and the pit backfilled. After firming in, and all settlement is complete, the soil levels should be at the original soil mark on the stem of the plant.

Upon completion of all planting, the entire area must be lightly hoed and raked to remove all foot marks and leave a neat level surface.

Cleansing

Cleansing operations for parks, open space, cemeteries and housing areas shall be subject to summer and winter programmes as follows:

- a) the summer programme shall apply from 1st April to 30th September inclusive; and undertake a daily manual and mechanical litter picking operation on all hard surfaced areas within the Location, seven days per week.
- b) the winter programme shall apply from 1st October to 31st March inclusive. Undertake a twice weekly manual and mechanical litter picking operation on all hard surfaced areas within the Location, once on Monday and once on Friday.

Benches and Seats - Re-painting and Re-application of Preservative

Each year, the Contractor is required to re-paint/re-apply a preservative to park and cemetery benches and seats as appropriate. Where necessary, the Contractor shall wash surfaces to remove dirt, grease and any other deleterious matter, thoroughly rub down and then wipe off with a damp lint-free cloth. Any defects must be reported to the Authorised Officer. Before re-painting, the Contractor must treat any bare wood/metal with an appropriate primer. The Contractor shall then re-paint or reapply preservative to the bench/seat; the colour of paint and wood preservatives must be agreed by the Authorised Officer.

Leaf Clearing

The Contractor is required to clear leaves, litter, debris, twigs, fruits, deleterious matter etc from grassed areas, paths, hard surfaces and horticultural features, beds and borders and be completed by the end of January each year. Leaves that fall on prepared sports pitches shall be removed prior to any new preparation or over marking. Leaves that fall on high amenity, fine turf and horticultural features, beds and borders must be removed at a maximum of seven day intervals. In addition, blown leaves, litter etc must be collected and removed from perimeters, under hedges and around trees.

(Indicative number of operations is a minimum of 5)

MAINTENANCE OF PONDS

The Contractor shall carry out works on ponds and water features so as to maintain a healthy balanced water quality free from any invasive vegetation. All operations shall be carried out in such a manner so as not to disturb wildlife, fish, nesting birds and wildfowl and so as not to damage any aquatic vegetation.

Waste, debris, refuse, litter and other deleterious matter removed from ponds must be left on bank edges overnight to give sufficient time for any aquatic life to migrate back into the water. Such material must be removed for proper disposal promptly the next day.

Pesticides/chemical weed control must not be used in ponds/lakes unless approved with the Authorised Officer.

Heavy machinery is NOT allowed due to the risk of it damaging pond liners.

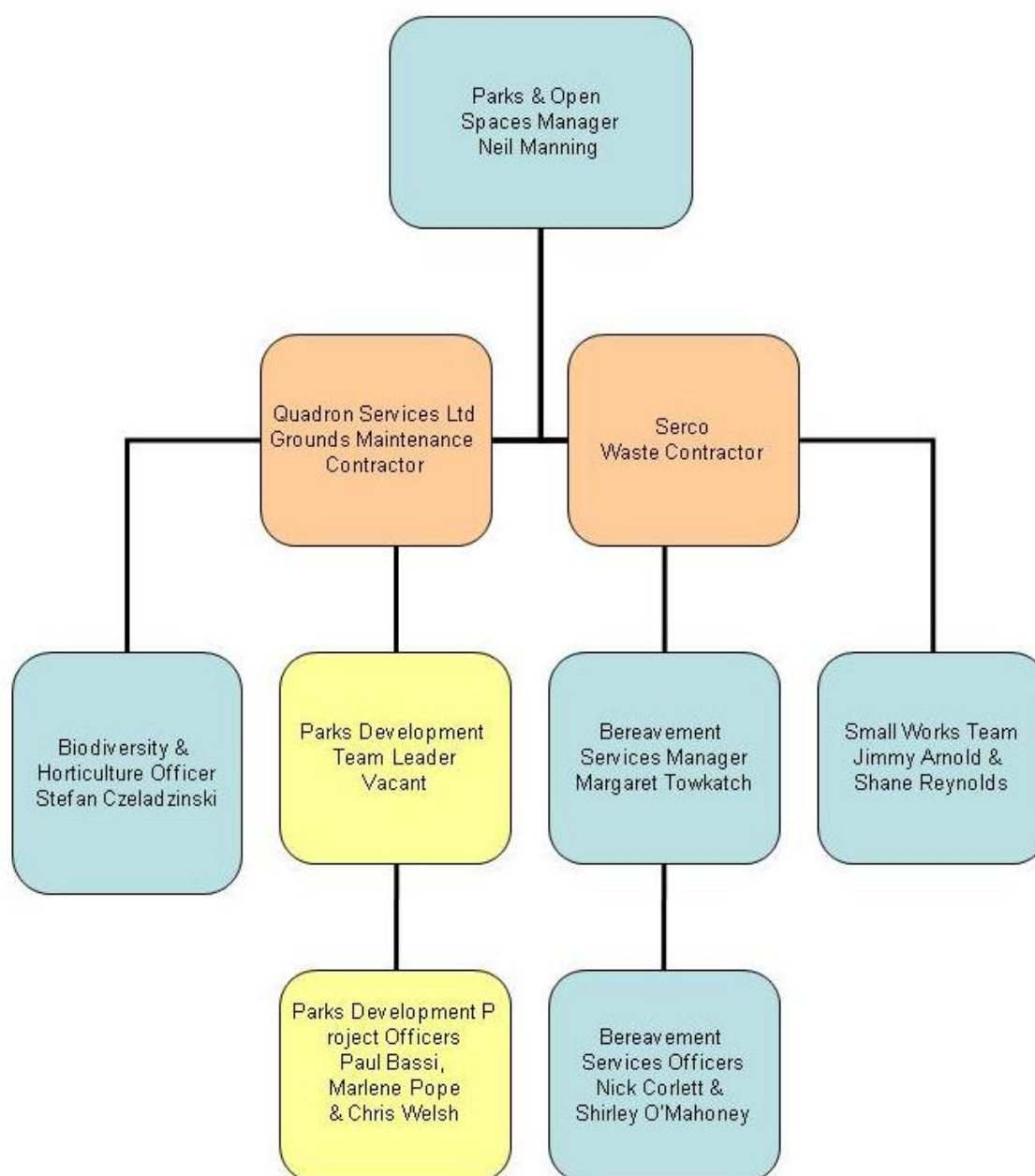
Where it is necessary to drain down the pond or use a chemical which could harm fish and wildfowl, the Contractor must remove all fish for safekeeping, in temporary storage, until such time it is safe to return them.

Play areas

A specialist detailed inspection and repair service is carried out monthly, by a third party, to check bearings, moving parts, structural fatigue and wear and tear.

The Contractor shall inspect all play areas every day between 09:00 hours and 11:00 hours. Every day, all litter, refuse, abandoned Waste, stones, glass and other debris must be removed from site for proper disposal.

Appendix 5 Parks Management Structure



Appendix 7 Health and Safety Policy



Statement of Health & Safety Policy

Quadron Services Ltd is committed to promoting the health and safety of all its employees and also anyone else who may be affected by the way it carries out its business.

Our scope of operations covers a wide variety of disciplines including the general horticultural maintenance of parks and public open spaces, sport pitch maintenance and burial grounds including burial services.

Health and safety compliance is an important aspect of our business and we will do everything that is reasonably practicable to achieve this. Quadron will set objectives and targets which will be subject to annual review.

We will ensure –

- Safe and healthy working environments that include safe systems of work thereby reducing risk and preventing injury and ill health.
- The provision of adequate and appropriate training and supervision that allows tasks to be completed safely.
- That colleagues and customers alike are aware of our health and safety procedures.
- That accidents and near misses are investigated and monitored to reduce the likelihood of these occurrences.
- The provision of competent, specialist health and safety advice.
- Two way consultations on health and safety issues through the participation of our people.
- That consideration is given to the health and safety implications of new activities.
- Compliance with current legislation and any other applicable requirements as a minimum standard.
- The Continual Improvement of our Health and Safety Performance and Management System.

Managers are responsible for managing health and safety issues within their areas of control. They must ensure that safety procedures are not only in place but that they are implemented, communicated, understood and monitored.

All employees are asked to be actively involved in promoting health and safety standards; they also have a legal duty to –

- Take care of their own safety and that of anyone else who may be affected by their actions whilst at work.
- Co-operate and comply with Quadron's health and safety policies and procedures.
- Report any hazards encountered to their line manager.

Ultimate responsibility for health and safety rests with the Chief Executive and the Board.

All policies will be reviewed and updated regularly.

A handwritten signature in black ink, appearing to read "Michael C. Martin".

MICHAEL C. MARTIN, MIH, MBIM, DMS, Dip.M
Chief Executive Officer
Date : 1st August 2011

A handwritten signature in black ink, appearing to read "Clive Ivil".

CLIVE IVIL
Managing Director
Date : 1st August 2011

Appendix 8 Environment & Sustainability policy



Environmental Sustainability Policy

Quadron Services Ltd has provided horticultural and grounds maintenance services to a broad customer base since 1993. We pride ourselves in doing what is best for our customers and employees, whilst taking into consideration social, economic and sustainability issues.

Our scope of operations covers a wide variety of disciplines including the general horticultural maintenance of parks and public open spaces, sport pitch maintenance and burial grounds including burial services.

Our Environmental Management System provides a framework to manage our environmental impacts. The system is integrated with our existing Business Management System which also covers Health and Safety and Quality. We will do everything that is reasonably practicable to ensure good governance and achieve our environmental objectives.

Quadron is committed to:

- The prevention of pollution
- Addressing climate change by reducing the carbon emissions produced during our operations
- Improving processes, equipment and materials under its control that have significant negative impacts on the environment
- Minimising energy usage, waste and the usage of natural materials by using replacing, reducing, re-using and recycling methods
- Providing the training and resources identified as necessary to ensure objectives are met
- Ensuring positive environmental impacts continue by providing necessary resources
- Continually improving the effectiveness, management and performance of the Environmental Management System

In order to ensure the success of this Policy Quadron will:

- Communicate its plan to address significant negative impacts
- Appoint competent persons to monitor and review the Environmental Management System
- Ensure all relevant information and training (where applicable) is available to all persons working for or on behalf of Quadron
- Implement controls to ensure compliance with applicable current legislation, accreditations and other requirements
- Actively encourage all persons working for or on behalf of Quadron to contribute to the success of the Environmental Management System

To achieve the above Quadron sets yearly objectives and targets and these are reviewed as a minimum at the annual management review meeting, along with this Policy.

This Policy is communicated to all persons working for or on behalf of Quadron and is made available upon request to the public and interested parties.

Objectives, targets and this policy are defined and authorised by senior management.

A handwritten signature in black ink, appearing to read "Michael C. Martin".

MICHAEL C. MARTIN, MIH, MBIM, DMS, Dip.M
Chief Executive Officer
Date: 10th January 2012

A handwritten signature in black ink, appearing to read "Clive Ivis".

CLIVE IVIS
Managing Director
Date: 10th January 2012

Appendix 10 Green waste recycling

Processing Green Waste to create Compost

Because the total quantity of Green Waste / Compost at Quadron's Wormwood Scrubs Depot is less than 60 tonnes at any one time, and it's intended use is by Quadron (the company operating the site) for the enrichment of areas under our control, a T23 exemption can be obtained to carry out composting.

Quadron currently has a T23 exemption for the production of compost at the Wormwood Scrubs depot and various U11 exemptions in place to allow us to use this compost at various locations around the Borough.



Appendix 11 Lantra Staff Training

Focus on Training!

Supervisors Keith Hall & Rick Jelley have recently qualified as Lantra-Awards instructors in Groundscare machinery. The intensive training involved a 5 day “Instructional Techniques” course, two days of Operator training on Ride-on and Pedestrian mowers and a further four days of technical standards training.

Keith commented: “I am very grateful for Quadron putting me forward for the Lantra-Awards Training Instructor course. I now hope to put my 24 years experience and the Lantra-Awards training into practice and show the trainees how to use the machinery correctly and safely and teach them some knowledge of health & safety regulations and codes of practice. Also, show them the pre-start checks and to get them involved with the machines so that they go away with a lot more understanding of how the machines work and keeping them maintained. I hope to become a good trainer because I know Quadron take their health & safety very seriously and I would like to do them proud.”

Rick added: “The Lantra-Awards training I received was rewarding personally as well as professionally. The structure and intensity of the course provided a valuable learning experience. I believe that Quadron are laying the groundwork that will enable our workforce to become some of the best trained operatives in the industry.”



TRAINING THROUGH COMMUNITY PROJECTS

This period has seen wide and varied interaction between Quadron and various parks and open spaces friends and user groups.

Events of particular interest were tree and bulb planting initiatives with school children at Hurlingham Park, South Park and Brook Green, whip planting at Wormwood Scrubs, Ravenscourt Park, a volunteer day with a Friends society at Hammersmith Park and the 100th year birthday celebration with the Friends group at Wormholt Park.



Local school children planting bulbs at Brook Green earlier this year.



Volunteers at Hammersmith Park Pond

“CULTIVATING RECOVERY”

Quadron is working in partnership with Groundwork, the environmental regeneration charity, and LBHF to provide unemployed people with the opportunity for work experience and training and the chance to learn new skills and potentially gain permanent employment.

Groundwork staff, under the supervision of Team Leader Lucy, act as a horticultural hit squad, called the “Quadron Green Team”. There are benefits for all: individuals that work on the Quadron programme develop their confidence, skills and experience in their pursuit to find permanent work and gain a track record and reference point.

The local community benefits from enhanced levels of service for no additional cost, and Quadron gains a valuable pool of skilled staff to fill future vacancies and smooth over the peaks in workload. Many favourable comments have been received to date from a variety of sources.

Cllr Paul Bristow (foreground left) together with Quadron and the Groundwork Green Team in the background



**THE QUADRON GREEN TEAM,
HAMMERSMITH & FULHAM**

The Quadron Green Team is a joint venture between Groundwork London and Quadron Services limited to provide supportive, practical and real experience training opportunities for the long term unemployed, working in the borough of Hammersmith and Fulham.

Groundwork London, 18 - 21 Monky Street, London, SE1 7QZ
Telephone: 020 7922 1290 | E-mail: london@groundwork.org.uk | Fax: 020 7922 1219
www.groundwork.org.uk/london
Registered charity no. 1121105

**EMPLOYMENT
& SKILLS**



COMMUNITY INITIATIVE WITH THIRD SECTOR PARTNERS
GROUNDWORK LONDON



HEDGE LAYING TRAINING >>

18 DECEMBER in Ravenscourt Park
Meet at the Ravenscourt Park Tea House, off Paddenswick Road, W6 0UL

**16 & 17 JANUARY on Wormwood Scrubs
Local Nature Reserve**
Meet at the Scrubs Lane Car Park, Off Scrubs Lane, close to the Texaco Petrol Station

9:30am - 3:30pm

**Learn the traditional art
of hedge laying.**

Help create new and improved hedgerows that
will grow to be healthier and last longer as well as
providing new habitats, food and shelter for wildlife.

Bring your own packed lunch
Training delivered by Clive Leeke, National Hedgelaying Society

Booking
Booking essential, limited places available
To book your place contact Netty Ribeaux,
on 07890 195 920 or Email: netty.ribeaux@groundwork.org.uk
www.scrubs-online.org.uk

Like Us On  Groundwork London  GroundworkLON



LOTTERY FUNDED



Groundwork London is a registered charity
no. 1121105

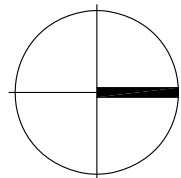


NOTES:

1. This drawing is to be read in conjunction with all relevant contract documentation from the design team, with any conflicting information to be brought to the attention of Gronitij Ltd in writing before commencing on site.
2. The contractor is to check and verify all levels and dimensions before construction. Any discrepancies are to be brought to the attention of Gronitij Ltd in writing before commencing on site.
3. All dimensions in mm, unless otherwise stated.
4. Do not scale from this drawing.
5. All sub base and concrete design and specification to engineer's details. All diagrams provided here are purely indicative.
6. Waterproofing of any element to be specified by others.
7. All proprietary products shall be installed in accordance with manufacturers written instructions.
8. Plant numbers are an indication only and plants should be ordered to suit site areas in accordance with scheduled plant densities.
9. Any proposed plant substitution shall be agreed with the landscape architect prior to ordering.
10. Key

- Existing Tree To Be Retained and Root Protection Zone
- Existing Tree To Be Removed
- Existing Category A' Tree with Reference numbers
- Existing Category B' Tree with Reference numbers
- Existing Category C' Tree with Reference numbers
- Existing Category R' Tree with Reference numbers
- N.B. Reference number to RHS of tree hole relates to CIRA Tree Report (April 98). Underlined reference number (to LHS of hunk) relates to OS topographical survey

2000/12/2	DC	Issued for construction	C1	MM	AJ
DATE	DRAWN	DESCRIPTION OF REVISION	LETTER	BY	APPROVED BY



33 Stanary Street, London, SE11 4AA
T: (+44) 0207 820 0388 F: (+44) 0207 591 3839
E: landscape.architecture@gronitij.co.uk

DRAWING STATUS :
CONSTRUCTION

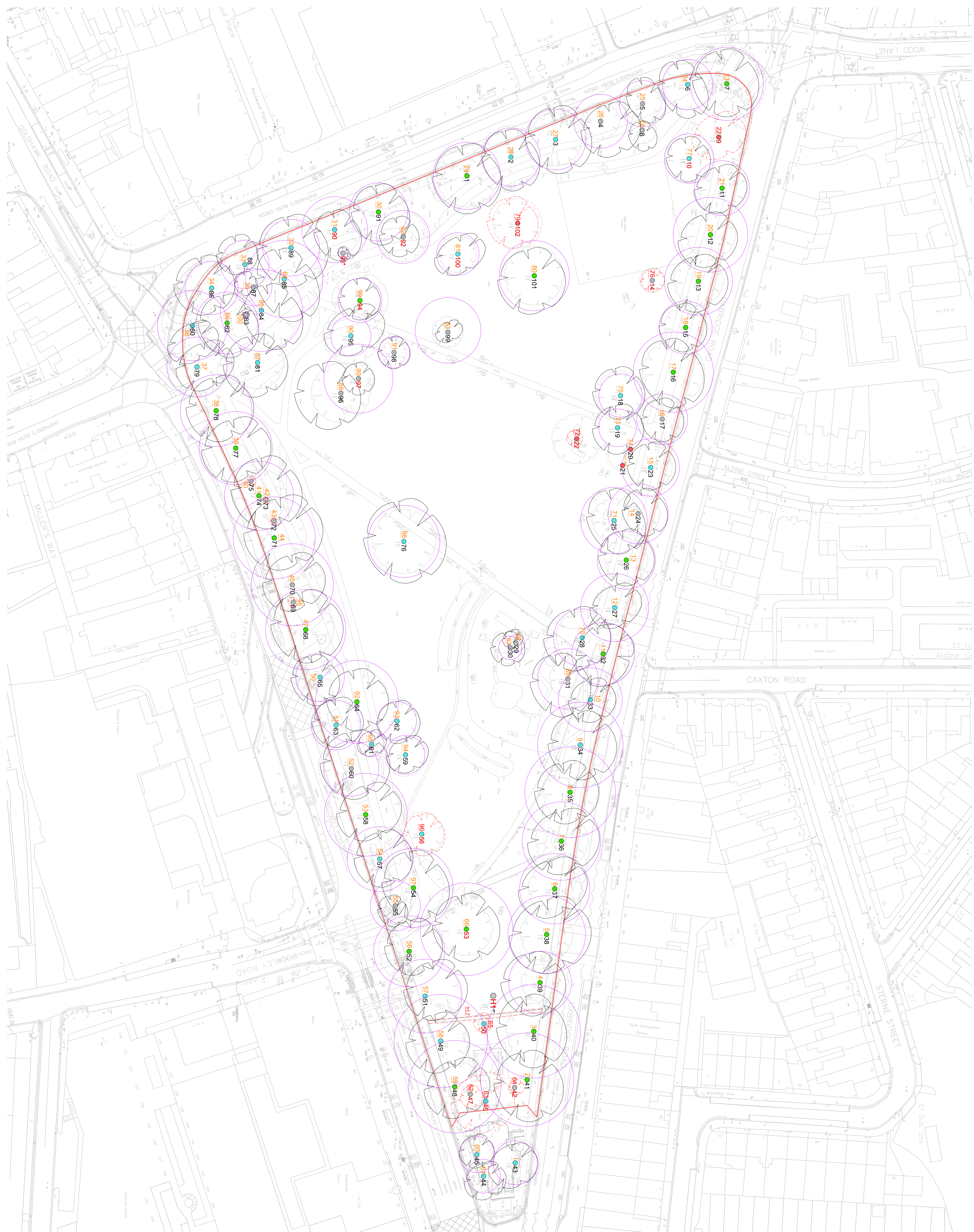
CLIENT :
LB OF HAMMERSMITH & FULHAM

PROJECT TITLE :
**SHEPHERDS BUSH COMMON
IMPROVEMENT WORKS**

DRAWING TITLE :
**TREE REMOVAL / RETENTION PLAN
ON EXISTING OS MAP**

DRAWING DATE :
22/09/11
DESIGNED BY :
DC
CHECKED BY :
BH
APPROVED BY :
AJ

DRAWING NUMBER :
1225L.19
REVISION :
C1



Appendix 14: Pesticide Reduction Policy (London Borough of Hammersmith and Fulham and Quadron Services)

Last year saw further reductions in the quantities of herbicides used by Quadron in the parks grounds maintenance program. This is reflected in the following:

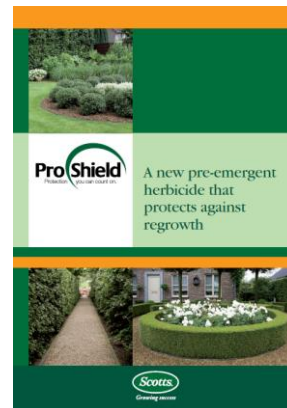
Product	2011	2012
Chikara	3600 grams	3000 grams
Proshield	180 litres	150 litres
Hiaktiv	120 litres	100 litres

This reduction was achieved by the implementation of the following:

- The fitting of pressure regulators to all knapsack sprayers, to reduce the operating pressure to one BAR.
- The use of low pressure deflector nozzles.
- The resultant reduced application volume and defined spray patterns.
- The extensive use of mulch across all high profile parks sites.
- The inspection of all sites prior to commencement of spraying to identify the base requirement.

It is intended that in 2013 that the above protocols be maintained and that any secondary spraying should only be done once a full borough inspection has been undertaken. It is intended that the basis of the 2013 program be one of reactive spot spraying. This will be done in conjunction with mechanical weed removal and a continuation of the mulching program.

These factors should further facilitate future reductions in herbicide use.



Other initiatives in place:

Under the LANTRA staff training program QSL are also ensuring staff involved in contract spraying on the contract are kept up to date on application technique and monitored to ensure that chemical is being applied safely and efficiently.

The product generated from the Green Waste Recycling facility at Wormwood Scrubs is also helping the fight to reduce herbicide application by culturally treating many beds with suitable dressings to reduce the need for herbicide applications.

Whitelaw
Turkington

Site:-
Shepherds Bush
Common, London

Tree Survey Report



CBATrees.

The Complete Professional Arboricultural Consultancy and Landscape Service.

Apex House, Apex Centre, Church Lane, Colden Common, Winchester,
Hampshire SO21 1TN Tel 01962 715407 Fax 01962 711419

April 2008
CBA7032



TREE SURVEY NOTES

This Tree Survey has been undertaken within the recommendations of British Standards 5837:2005 and current good arboricultural practice.

- Each tree has been numbered and, where instructed, for future identification on site, has been tagged using small durable metal or plastic tags.
- Due to variations of existing ground levels through the site, height dimensions are estimated and are given in metres. Accurate heights, measured with the aid of optical instruments can be provided where instructed.
- Trunk/stem diameters are measured in mm at 1.5 metres above ground level, or immediately above the root flare for multi-stemmed trees, using a standard measuring tape as defined by British Standards, unless otherwise stated.
- Estimated branch spread is taken in metres from the centre of the trunk, at the four cardinal points of a compass, to achieve an accurate representation of the crown shape which will be recorded on the tree survey plan.
- An assessment of a tree's age classification is made in terms of its maturity within the site's landscape and defined as:

Y	=	young trees
MA	=	middle aged trees
M	=	mature trees
OM	=	over-mature trees
V	=	veteran

- An assessment of a tree's physiological condition is defined as:

Good	=	fully functioning biological system showing average vitality i.e. normal bud growth, leaf size, crown density and wound closure
Fair	=	fully functioning biological system showing below average vitality i.e. reduced bud growth, smaller leaf size, lower crown density and reduced wound closure
Poor	=	a biological system with limited functionality showing significantly below average vitality i.e. limited bud growth, small and chlorotic leaves, low crown density and limited wound closure
Dead	=	dead

- An assessment of a tree's structural condition is defined as:

Good	=	no significant structural defects
Fair	=	structural defects which could be alleviated through remedial tree surgery or management practices
Poor	=	structural defects which cannot be alleviated through tree surgery or management practices
Dead	=	dead

- An assessment of a tree's future life expectancy is defined as: **<10, 10-20, 20-40 or >40 years.**

Categorisation of Trees

The category for each tree is assessed using the recommendations of BS5837:2005. The assessment has not considered any site-specific development proposals, but will have considered any changes on or off-site which may have an effect on the conditions surrounding the surveyed trees.


The trees have been classified into one of the following categories (and one or more sub-categories [this will however not increase the value of the tree]) and are indicated on the associated drawings by colours as indicated.

Category R	1 – Mainly arboricultural values	2 – Mainly landscape values	3 – Mainly cultural values	Identification colour on plan
Trees in such a condition that any value would be lost within 10 years or should be removed for reasons of sound arboricultural management				DARK RED
Category A				
Trees of high quality and value: in such a condition as to make a substantial contribution (40 years or more is recommended)	Trees that are a particularly good example of their species, rare or unusual, essential components of groups or of formal or semi-formal features.	Trees, groups or woodlands providing definite screening of views in and out of the site, or softening effect to the locality, or those of particular visual importance.	Trees, groups or woodlands of significant conservation, historical or other value (e.g. veteran or wood-pasture)	LIGHT GREEN

Category B				
Trees of moderate quality and value, capable of making a significant contribution for in excess of 20 years.	Trees which might be included in the A category, but are downgraded due to impaired conditions/remediable defects.	Trees in numbers, that collectively form a distinct landscape feature but are not individually an essential component of a formal or semi-formal feature. These are likely to be trees situated mainly within the site with little visual impact on the surrounding locality.	Trees with clearly identifiable conservation or other cultural benefits.	MID BLUE
Category C				
Trees of low quality and value which might remain for a minimum of 10 years or young trees with stems of less than 150mm diameter.	Trees not qualifying in higher categories	Trees in groups or woodlands without having significant landscape value or offering low or temporary screening value	Trees with very limited conservation or other cultural benefits	GREY

Clients are advised that Tree Surveys are a basic data collection exercise and record of tree condition at the time of survey. It will identify any visible signs of ill-health or major defects, advising a further detailed investigation where appropriate. This will most often take the form of a request for either “*full ground level inspection*” or “*climbing inspection required*”. There may also be a further reference to the need for “*decay detection equipment*” to aid diagnosis. A tree survey does not include a comprehensive schedule or specification of remedial tree works, but may contain a guide to the work which might be undertaken by a prudent tree owner, purely for reasons of health and safety.

A Tree Survey should not be confused with a Tree Inspection or Arboricultural Implication Assessment, which are totally separate exercises.

	TREE SURVEY SCHEDULE			
	Client:	Whitelaw Turkington	Site:	Shepherds Bush Common, London
	Date:	8 April 2008	Consultant:	Stefan Rose BSc(Hons), Tech Cert (Arbor A)
	Tagged:	No	Weather:	Sunny, cold

Notes:-

1. It may be advised that some trees should have the ivy removed to enable a re-survey to be carried out. This would also alleviate the tree from becoming suppressed; carrying additional weight that increases the chance of windthrow due to a larger dense crown area; and only receiving restricted light. Unless otherwise stated, in order to prevent regrowth, it is only necessary to remove a 300mm section of ivy and clear around the base.
2. It may be advised that it was only possible to estimate the diameter of some trees because of ivy smothering, dense vegetation, or trees located off-site with no access.
3. The estimated remaining contribution in years, and the tree grading category have been calculated for the current situation and may alter where further investigation works are advised.
4. Some trees or groups may have been given an interim grade. The reason for the interim grading is addressed in the timescales given as this may have a bearing on health and safety and/or any development proposals.
5. Tree Groups have been assessed with estimated and representative data.
6. This is not a Tree Works Schedule. Any preliminary management recommendations are listed in the interests of health and safety and should be carried out by a prudent tree owner.

Tree No	Species	H't (m)	Single/ Multi-Stemmed (S or MS)	Stem Diam (mm)	Branch Spread (m)				H't of Crown AGL (m)				Age	Physio-logical Condition	Structural Condition and Relevant Comments	Preliminary Management Recommendations	Est. Rem. Contrib. (Yrs)	Cat
					N	E	S	W	N	E	S	W						
1	London Plane <i>Platanus x hispanica</i>	19	S	900	10.0	11.5	11.0	10.0	3.0	3.0	3.0	4.0	M	Good	Good Burrowing hole at base Old pruning wounds in crown occluding Epicormics in crown Part of linear group Minor deadwood and stubs	None required at time of survey	>40	A1+2
2	London Plane <i>Platanus x hispanica</i>	19	S	780	8.0	10.5	9.0	9.0	6.0	3.0	4.0	5.0	M	Good	Good Old pruning wounds in crown occluding Epicormics in crown Part of linear group Minor deadwood and stubs Bifurcated at 4m above ground level	None required at time of survey	>40	B1+2

Tree No	Species	H't (m)	Single/ Multi-Stemmed (S or MS)	Stem Diam (mm)	Branch Spread (m)				H't of Crown AGL (m)				Age	Physio-logical Condition	Structural Condition and Relevant Comments	Preliminary Management Recommendations	Est. Rem. Contrib. (Yrs)	Cat
					N	E	S	W	N	E	S	W						
3	London Plane <i>Platanus x hispanica</i>	19	S	815	11.0	11.0	9.0	10.0	3.0	2.0	2.5	5.0	M	Good	Good Old branch tear on East side Lower limb occluding Major deadwood in crown on South side Old pruning wounds in crown Part of linear group	Remove major deadwood within 3 months	20-40	B1+2
4	London Plane <i>Platanus x hispanica</i>	16	S	720	11.0	12.0	8.0	4.0	4.0	2.0	4.0	4.0	M	Fair	Fair Borrowing at base Numerous old pruning wounds occluding on West side Branch tears from storm damage in crown Previously lost top Epicormics in crown Minor deadwood in crown Part of linear group	None required at time of survey	20-40	C1+2
5	London Plane <i>Platanus x hispanica</i>	18	S	620	7.0	7.0	4.0	8.0	4.0	8.0	2.0	5.0	M	Fair	Fair Minor decay at base on East side Epicormics on trunk Numerous old pruning wounds on trunk occluding Crown shape distorted due to group pressure Old pruning wounds in crown occluding Part of linear group	None required at time of survey	20-40	C1+2
6	London Plane <i>Platanus x hispanica</i>	19	S	675	5.0	10.0	9.0	9.0	6.0	4.0	4.0	5.0	M	Good	Good Old pruning wounds occluding on trunk and in crown Minor deadwood in crown Crown shape distorted due to group pressure Part of linear group	None required at time of survey	>40	B1+2

Tree No	Species	H't (m)	Single/ Multi-Stemmed (S or MS)	Stem Diam (mm)	Branch Spread (m)				H't of Crown AGL (m)				Age	Physio-logical Condition	Structural Condition and Relevant Comments	Preliminary Management Recommendations	Est. Rem. Contrib. (Yrs)	Cat
					N	E	S	W	N	E	S	W						
7	London Plane <i>Platanus x hispanica</i>	22	S	980	10.0	10.0	10.0	11.0	4.5	4.5	3.0	6.0	M	Good	Good Large buttress roots Growing in small permeable tarmac area which is surrounded by normal tarmac and paving Part of linear group Minor deadwood in crown Good shape and form High visual amenity value Previously crown lifted	None required at time of survey	>40	A1+2
8	False Acacia <i>Robinia pseudoacacia</i>	15	S	710	3.5	6.5	5.0	3.0	2.0	1.5	1.5	2.5	M	Fair	Poor Tarmac path to West Cavity at base - opening on North side Low hanging branches Bifurcated at 6m above ground level Leans East Epicormics on trunk Bark wound on trunk Major deadwood in crown	Advise removal within 6 months	<10	R
9	London Plane <i>Platanus x hispanica</i>	17	S	790	9.0	6.5	8.5	7.0	3.0	3.0	5.0	3.0	MA	Fair	Fair Large buttress roots Suspected <i>Ganoderma</i> fungal fruiting bodies throughout basal area Colonising large bark wound which extends 3.5m above ground level on North side of trunk Extent of decay unknown Part of linear group High visual amenity value Previously crown lifted	Full ground level inspection with Picus decay detection equipment within 6 months or Advise removal	<10	R

Tree No	Species	H't (m)	Single/ Multi-Stemmed (S or MS)	Stem Diam (mm)	Branch Spread (m)				H't of Crown AGL (m)				Age	Physio-logical Condition	Structural Condition and Relevant Comments	Preliminary Management Recommendations	Est. Rem. Contrib. (Yrs)	Cat
					N	E	S	W	N	E	S	W						
10	Lime <i>Tilia spp</i>	19	S	660	6.5	7.0	7.0	7.0	2.0	1.5	1.5	1.5	M	Good	Good Bifurcated at 4m above ground level Desire line to East of trunk Low hanging branches Storm damage and hung up branches in crown Epicormics in crown Deadwood in crown Previously crown reduced Bark wounds in upper canopy	Remove hung up branch Remove damaged limb in East side of canopy Crown clean All within 6 months	>40	B1+2
11	London Plane <i>Platanus x hispanica</i>	18	S	735	8.0	7.0	9.0	7.0	6.0	5.0	3.0	4.5	M	Good	Good Growing in compacted grass area Part of linear group Previously crown lifted Good shape and form High visual amenity value	None required at time of survey	>40	A1+2
12	London Plane <i>Platanus x hispanica</i>	17	S	1000	8.0	9.0	11.0	7.0	7.0	2.5	2.5	5.0	M	Good	Good Large buttress roots Growing in compacted grass area Part of linear group Previously crown lifted Good shape and form High visual amenity value	None required at time of survey	>40	A1+2
13	London Plane <i>Platanus x hispanica</i>	20	S	910	9.0	9.0	10.0	8.0	8.0	4.0	4.0	5.0	M	Good	Good Large buttress roots Growing in compacted grass area Part of linear group Previously crown lifted Good shape and form High visual amenity value	None required at time of survey	>40	A1+2

Tree No	Species	H't (m)	Single/ Multi-Stemmed (S or MS)	Stem Diam (mm)	Branch Spread (m)				H't of Crown AGL (m)				Age	Physio-logical Condition	Structural Condition and Relevant Comments	Preliminary Management Recommendations	Est. Rem. Contrib. (Yrs)	Cat
					N	E	S	W	N	E	S	W						
14	Common Sycamore <i>Acer pseudoplatanus</i>	8	S	330	4.0	3.5	3.5	3.5	3.0	3.0	3.0	3.0	Y	Fair	Fair Mechanical damage at base on South side Decay present on trunk Major deadwood in crown Multi-stemmed at 2m above ground level Old pruning wounds in crown	Remove major deadwood in 3 months	10-20	C1
15	London Plane <i>Platanus x hispanica</i>	20	S	710	6.5	7.0	8.0	8.0	4.0	4.0	7.0	4.0	M	Good	Good Part of linear group Major deadwood in crown in upper East side of canopy	Remove major deadwood within 1 month	>40	A1+2
16	London Plane <i>Platanus x hispanica</i>	22	S	1075	9.0	11.0	10.0	11.0	6.0	3.0	3.0	2.0	M	Good	Good Part of linear group Previously crown reduced on North side Old pruning wounds in crown occluding Minor deadwood in crown Good shape and form	None required at time of survey	>40	A1+2
17	London Plane <i>Platanus x hispanica</i>	17	S	680	6.5	7.0	6.5	6.5	9.0	5.0	7.0	6.0	MA	Good	Fair Growing in compacted grass area Large internal cavity with extensive visible decay Wound wood occluding over cavity Part of linear group Previously crown lifted High visual amenity value Previously crown reduced Epicormics in crown	Full ground level inspection with Picus decay detection equipment within 1 month	>40	C1+2 Interim

Tree No	Species	H't (m)	Single/ Multi-Stemmed (S or MS)	Stem Diam (mm)	Branch Spread (m)				H't of Crown AGL (m)				Age	Physiological Condition	Structural Condition and Relevant Comments	Preliminary Management Recommendations	Est. Rem. Contrib. (Yrs)	Cat
					N	E	S	W	N	E	S	W						
18	Common Lime <i>Tilia x europaea</i>	17	S	580	8.0	7.0	8.0	9.0	3.5	6.0	2.5	2.0	M	Good	Fair Wound at base on East side of trunk approximately 0.5m high Decay present Minor deadwood in crown Crown shape distorted due to group pressure Low hanging branches Epicormics in crown	Full ground level inspection with Picus decay detection equipment within 6 months	20-40	B1+2 Interim
19	Common Lime <i>Tilia x europaea</i>	16	S	505	8.0	8.0	8.0	7.0	2.0	2.0	4.0	2.0	MA	Fair	Good Epicormics on trunk Old pruning wounds on trunk and in crown occluding and occluded Branch tear in crown on South side Minor deadwood in crown	None required at time of survey	20-40	B1+2
20	Stump	-	-	-	-	-	-	-	-	-	-	-	M	Dead	Dead stump	Advise removal	-	R
21	Stump	-	-	-	-	-	-	-	-	-	-	-	MA	Dead	Dead stump	Advise removal	-	R
22	Common Sycamore <i>Acer pseudoplatanus</i>	14	S	720	2.0	2.0	3.0	3.0	10.0	6.0	6.0	6.0	MA	Poor	Fair Old pruning wounds on trunk and in crown occluding Previously pollarded at 14m above ground level Bark necrosis in top of crown Poor quality tree	Advise removal	<10	R

Tree No	Species	H't (m)	Single/ Multi-Stemmed (S or MS)	Stem Diam (mm)	Branch Spread (m)				H't of Crown AGL (m)				Age	Physio-logical Condition	Structural Condition and Relevant Comments	Preliminary Management Recommendations	Est. Rem. Contrib. (Yrs)	Cat
					N	E	S	W	N	E	S	W						
23	London Plane <i>Platanus x hispanica</i>	18	S	770	8.0	7.0	7.0	7.5	9.0	12.0	5.0	5.0	M	Good	Good Growing in compacted grass area Apertures in old pruning wounds which are occluding on trunk Previously crown reduced Epicormics in crown Previously crown lifted Part of linear group High visual amenity value	None required at time of survey	>40	B1+2
24	London Plane <i>Platanus x hispanica</i>	19	S	805	9.0	8.0	4.5	7.0	9.0	6.0	5.0	5.5	M	Good	Good Growing in compacted grass area Apertures in old pruning wounds which are occluding on trunk Trunk and crown shape distorted due to group pressure Epicormics on trunk Previously crown lifted Part of linear group High visual amenity value	None required at time of survey	>40	C1+2
25	Common Ash <i>Fraxinus Excelsior</i>	27	S	890	9.0	11.0	8.0	10.0	6.0	3.0	5.0	6.0	M	Fair	Fair Bifurcated at 4m above ground level Crown shape distorted due to group pressure Storm damage in crown Major deadwood in crown Old pruning wounds on trunk and in crown	Remove major deadwood within 6 months	20-40	B1+2

Tree No	Species	H't (m)	Single/ Multi-Stemmed (S or MS)	Stem Diam (mm)	Branch Spread (m)				H't of Crown AGL (m)				Age	Physio-logical Condition	Structural Condition and Relevant Comments	Preliminary Management Recommendations	Est. Rem. Contrib. (Yrs)	Cat
					N	E	S	W	N	E	S	W						
26	London Plane <i>Platanus x hispanica</i>	22	S	780	9.0	8.0	8.0	9.5	7.0	5.0	3.0	5.5	M	Good	Good Growing in compacted grass area Previously crown lifted Part of linear group Large buttress roots Good shape and form High visual amenity value	None required at time of survey	>40	A1+2
27	London Plane <i>Platanus x hispanica</i>	18	S	910	9.0	6.0	8.0	6.5	7.0	5.0	6.0	5.0	M	Good	Good Growing in compacted grass area Part of linear group Previously crown lifted Large buttress roots Crown shape distorted due to group pressure Previously crown reduced Major deadwood in crown Epicormics in crown High visual amenity value	Remove major deadwood	>40	B1+2
28	Common Ash <i>Fraxinus Excelsior</i>	20	S	770	9.0	9.0	12.0	10.0	6.0	10.0	4.0	6.0	M	Good	Good Mechanical damage to exposed surface roots Epicormics in crown Crown shape distorted due to group pressure Old pruning wounds occluding in crown Branch tear on lowest limb on North side	None required at time of survey	20-40	B1+2

Tree No	Species	H't (m)	Single/ Multi-Stemmed (S or MS)	Stem Diam (mm)	Branch Spread (m)				H't of Crown AGL (m)				Age	Physio-logical Condition	Structural Condition and Relevant Comments	Preliminary Management Recommendations	Est. Rem. Contrib. (Yrs)	Cat
					N	E	S	W	N	E	S	W						
29	Common Ash <i>Fraxinus Excelsior</i>	8	S	230	3.0	1.0	3.5	4.5	2.0	2.0	2.0	2.0	Y	Fair	Fair Bark wound on North side of trunk at 0.25m above ground level Developing tree Crown shape distorted due to group pressure Bifurcated at 2.2m above ground level Bark wound on South side of West stem Storm damage in crown Hung up branches in crown	Remove hung up branches within 1 month	<10	C1+2
30	Common Ash <i>Fraxinus Excelsior</i>	9	S	310	4.5	5.0	6.0	5.5	2.0	2.0	2.0	2.0	Y	Fair	Fair Low hanging branches Wound at 2m above ground level on East side of trunk Storm damage in crown Crown shape distorted due to group pressure Leans South	None required at time of survey	10-20	C1+2
31	Common Ash <i>Fraxinus Excelsior</i>	21	S	810	6.0	10.5	12.0	9.5	15.0	10.0	4.0	9.0	M	Good	Fair Growing in childrens playground <i>Inonotus hispidus</i> fungal fruiting body growing on old pruning wound at 6m above ground level on South-west side Old pruning wounds throughout crown Crown shape distorted due to group pressure Bark wounds occluding on lower southern-most branches due to poor pruning practice	None required at time of survey	10-20	C1+2

Tree No	Species	H't (m)	Single/ Multi-Stemmed (S or MS)	Stem Diam (mm)	Branch Spread (m)				H't of Crown AGL (m)				Age	Physio-logical Condition	Structural Condition and Relevant Comments	Preliminary Management Recommendations	Est. Rem. Contrib. (Yrs)	Cat
					N	E	S	W	N	E	S	W						
32	London Plane <i>Platanus x hispanica</i>	21	S	840	9.0	10.0	8.0	10.0	8.0	8.0	4.0	6.0	M	Good	Good Epicormics on trunk and in crown Old pruning wounds in crown occluding Minor deadwood and stubs Part of linear group	None required at time of survey	>40	A1+2
33	London Plane <i>Platanus x hispanica</i>	18	S	855	8.0	7.0	7.0	6.0	6.0	6.0	6.0	8.0	M	Good	Good Epicormics on trunk and in crown Old pruning wound on trunk occluding Major deadwood in crown to West side Old pruning wounds in crown occluding Previously crown reduced Part of linear group	Remove major deadwood within 3 months	>40	B1+2
34	London Plane <i>Platanus x hispanica</i>	19	S	1145	11.0	11.0	10.0	10.0	9.0	5.0	3.0	5.0	M	Good	Good Growing in compacted grass area Part of linear group Previously crown lifted Old pruning wounds occluded High visual amenity value Large buttress roots	None required at time of survey	>40	B1+2
35	London Plane <i>Platanus x hispanica</i>	18	S	1215	9.0	9.0	11.0	10.0	4.0	2.0	2.5	6.0	M	Good	Good Epicormics in crown Major deadwood in crown (deadwood is over road and over heavily used footpath) Hanging branch in East side Part of linear group	Remove major deadwood and hanging branch within 1 month	>40	A1+2
36	London Plane <i>Platanus x hispanica</i>	24	S	1050	12.0	10.0	11.0	9.0	6.0	5.0	3.0	5.0	M	Good	Good Epicormics on trunk Part of linear group Minor deadwood in crown Crown shape distorted due to group pressure	None required at time of survey	>40	A1+2

Tree No	Species	H't (m)	Single/ Multi-Stemmed (S or MS)	Stem Diam (mm)	Branch Spread (m)				H't of Crown AGL (m)				Age	Physio-logical Condition	Structural Condition and Relevant Comments	Preliminary Management Recommendations	Est. Rem. Contrib. (Yrs)	Cat
					N	E	S	W	N	E	S	W						
37	London Plane <i>Platanus x hispanica</i>	18	S	940	11.0	8.0	11.5	9.0	6.0	4.0	3.0	4.0	M	Good	Good Growing in compacted grass area Part of linear group Previously crown lifted Old pruning wounds occluded High visual amenity value Large buttress roots Minor deadwood in crown	None required at time of survey	>40	A1+2
38	London Plane <i>Platanus x hispanica</i>	21	S	1040	14.0	12.0	12.0	10.5	12.0	6.0	5.0	3.0	M	Good	Good Growing in compacted grass area Part of linear group Previously crown lifted Old pruning wounds occluded High visual amenity value Large buttress roots Major deadwood in crown	Remove major deadwood	>40	A1+2
39	London Plane <i>Platanus x hispanica</i>	22	S	840	8.0	9.0	12.0	10.5	6.0	6.0	5.0	5.0	M	Good	Good Growing in compacted grass area Part of linear group Previously crown lifted High visual amenity value Small bark wound occluding at base Old pruning wounds occluded	None required at time of survey	>40	A1+2
40	London Plane <i>Platanus x hispanica</i>	20	S	1275	10.0	11.0	11.0	12.0	5.0	4.0	4.0	7.0	M	Good	Good Hanging branch in crown over road to North Epicormics in crown Old pruning wounds in crown occluding Minor deadwood in crown throughout Part of linear group	Remove hanging branch over road and minor deadwood within 1 month	>40	A1+2

Tree No	Species	H't (m)	Single/ Multi-Stemmed (S or MS)	Stem Diam (mm)	Branch Spread (m)				H't of Crown AGL (m)				Age	Physio-logical Condition	Structural Condition and Relevant Comments	Preliminary Management Recommendations	Est. Rem. Contrib. (Yrs)	Cat
					N	E	S	W	N	E	S	W						
41	London Plane <i>Platanus x hispanica</i>	20	S	1310	10.0	13.0	11.0	9.0	5.0	4.0	4.0	5.0	M	Good	Good Bifurcated at 5m above ground level Minor deadwood in crown Epicormics in crown Old pruning wounds in crown occluding Part of linear group	Remove minor deadwood within 3 months	>40	A1+2
42	Unknown	4	S	120	3.0	2.5	2.0	2.0	2.0	1.5	2.0	1.5	Y	Good	Good Developing tree Low hanging branches Minor deadwood in crown	None required at time of survey	20-40	C1
43	London Plane <i>Platanus x hispanica</i>	14	S	590	7.0	7.0	9.0	6.0	6.0	3.0	4.0	4.0	M	Good	Good Grows in raised bed Old pruning wounds in crown occluding Previously crown reduced Minor deadwood and stubs	None required at time of survey	>40	B1+2
44	London Plane <i>Platanus x hispanica</i>	12	S	450	6.5	7.0	7.0	4.0	4.0	3.0	4.0	4.0	MA	Fair	Good Evidence of burrowing in planting pit Previously crown reduced Old pruning wounds in crown occluding Crown shape distorted due to group pressure Minor deadwood and stubs	None required at time of survey	>40	B1+2
45	London Plane <i>Platanus x hispanica</i>	13	S	480	6.0	4.0	5.0	6.0	3.0	3.0	4.0	4.0	MA	Good	Good Evidence of burrowing in planting pit Previously crown reduced Old pruning wounds in crown Crown shape distorted due to group pressure Minor deadwood and stubs	None required at time of survey	>40	B1+2

Tree No	Species	H't (m)	Single/ Multi-Stemmed (S or MS)	Stem Diam (mm)	Branch Spread (m)				H't of Crown AGL (m)				Age	Physio-logical Condition	Structural Condition and Relevant Comments	Preliminary Management Recommendations	Est. Rem. Contrib. (Yrs)	Cat
					N	E	S	W	N	E	S	W						
46	Unknown	6	S	190	4.0	4.0	4.0	3.0	2.0	2.0	2.0	2.0	Y	Good	Good Developing tree Low hanging branches Minor deadwood in crown Bifurcated at 2.5m above ground level	None required at time of survey	20-40	B1
47	Myrobalan Plum <i>Prunus cerasifera</i>	6	S	190	3.5	4.5	3.5	2.5	1.0	2.0	2.0	2.0	Y	Good	Good Previously crown lifted Low hanging branches Old pruning wounds occluding on trunk Basal suckers Birds nest in crown Epicormics in crown	None required at time of survey	20-40	C1+2
48	London Plane <i>Platanus x hispanica</i>	18	S	1240	11.0	9.5	10.0	8.0	9.0	8.0	6.0	2.5	M	Good	Good Large buttress roots Part of linear group Previously crown lifted High visual amenity value Minor deadwood in crown Good shape and form	None required at time of survey	>40	A1+2
49	London Plane <i>Platanus x hispanica</i>	20	S	1470	9.0	9.0	11.0	9.0	2.0	6.0	5.0	4.0	M	Fair	Fair Part of linear group Storm damage in crown Large hung up branch in crown Crown shape distorted due to group pressure Minor deadwood in crown	URGENT Remove large hung up branch	>40	B1+2
50	Deodar Cedar <i>Cedrus deodora</i>	11	S	230	3.0	2.5	3.0	3.5	1.0	1.0	1.0	1.0	Y	Good	Good Developing tree Low hanging branches Tall and etiolated due to group pressure Minor deadwood in crown Limited access	None required at time of survey	>40	B1

Tree No	Species	H't (m)	Single/ Multi-Stemmed (S or MS)	Stem Diam (mm)	Branch Spread (m)				H't of Crown AGL (m)				Age	Physio-logical Condition	Structural Condition and Relevant Comments	Preliminary Management Recommendations	Est. Rem. Contrib. (Yrs)	Cat
					N	E	S	W	N	E	S	W						
51	London Plane <i>Platanus x hispanica</i>	17	S	990	14.0	9.0	6.0	9.0	6.0	7.0	5.0	9.0	M	Good	Good Growing in compacted grass area Part of linear group Previously crown lifted Burrs throughout trunk High visual amenity value Large buttress roots Previously crown reduced Suppressed and stunted	None required at time of survey	>40	B1+2
52	London Plane <i>Platanus x hispanica</i>	18	S	950	11.0	8.0	7.0	9.0	4.0	6.0	5.0	6.0	M	Good	Good Part of linear group Epicormics on trunk and in crown Old pruning wounds in crown occluding Minor deadwood and stubs in crown Hanging branch in crown to East side	None required at time of survey	>40	A1+2
53	London Plane <i>Platanus x hispanica</i>	21	S	1240	10.5	10.0	10.0	11.0	2.5	2.5	2.5	2.5	M	Good	Good Large buttress roots Bark wounds at base Multi-stemmed by 4m above ground level Old pruning wounds in crown Minor deadwood in crown Rope attached round limb on West side	Remove rope within 6 months	>40	A1+2
54	London Plane <i>Platanus x hispanica</i>	22	S	1060	11.0	11.0	9.0	11.5	3.0	6.0	3.0	4.0	M	Good	Good Large buttress roots Burrs throughout trunk Dead hanging branch over footpath Good shape and form High visual amenity value	Remove dead hanging branch over footpath within 1 month	>40	A1+2

Tree No	Species	H't (m)	Single/ Multi-Stemmed (S or MS)	Stem Diam (mm)	Branch Spread (m)				H't of Crown AGL (m)				Age	Physio-logical Condition	Structural Condition and Relevant Comments	Preliminary Management Recommendations	Est. Rem. Contrib. (Yrs)	Cat
					N	E	S	W	N	E	S	W						
55	London Plane <i>Platanus x hispanica</i>	19	S	670	3.0	6.0	6.0	4.0	4.0	6.0	6.0	6.0	M	Fair	Good Large bark wound on trunk from ground level to 6m above ground level Decay at base on South-east side Epicormics on trunk and in crown Old pruning wounds in crown occluding Crown shape distorted due to group pressure Part of linear group	None required at time of survey	20-40	C1+2
56	Common Lime <i>Tilia x europaea</i>	19	S	540	7.0	7.0	6.0	6.0	1.5	1.5	2.0	1.5	MA	Good	Good Low hanging branches Epicormics in crown Minor deadwood in crown Part of linear group	Crown clean within 6 months	>40	B1
57	London Plane <i>Platanus x hispanica</i>	19	S	870	10.5	9.0	8.0	8.0	4.0	2.0	6.0	3.0	M	Good	Good Part of linear group Epicormics in crown Crossing branches Old pruning wounds in crown occluding	None required at time of survey	>40	B1+2
58	London Plane <i>Platanus x hispanica</i>	23	S	1110	12.0	8.0	9.0	8.5	4.0	3.0	7.0	2.5	M	Good	Good Large buttress roots Burs on trunk Part of linear group Previously crown lifted Major deadwood in crown over footpath Good shape and form High visual amenity value	Remove major deadwood within 6 months	>40	A1+2
59	Common Lime <i>Tilia x europaea</i>	19	S	520	7.5	5.5	6.0	5.0	1.5	1.5	2.0	2.0	MA	Fair	Fair Part of linear group Low hanging branches Multi-stemmed by 4m above ground level Minor deadwood in crown Epicormics in crown	Crown clean within 6 months	>40	B1

Tree No	Species	H't (m)	Single/ Multi-Stemmed (S or MS)	Stem Diam (mm)	Branch Spread (m)				H't of Crown AGL (m)				Age	Physio-logical Condition	Structural Condition and Relevant Comments	Preliminary Management Recommendations	Est. Rem. Contrib. (Yrs)	Cat
					N	E	S	W	N	E	S	W						
60	London Plane <i>Platanus x hispanica</i>	19	S	740	12.5	10.0	9.0	11.0	4.0	6.0	4.0	6.0	M	Fair	Fair Part of linear group Major deadwood throughout crown Low crown density Old pruning wounds in crown occluding	Remove major deadwood within 3 months	20-40	C1+2
61	Norway Maple <i>Acer platanoides</i>	14	S	340	5.0	3.5	4.5	4.0	4.0	3.0	3.5	3.0	MA	Fair	Fair Bifurcated at 3.5m above ground level Leans North Crown shape distorted due to group pressure Minor deadwood in crown	None required at time of survey	>40	B1+2
62	Common Lime <i>Tilia x europaea</i>	16	S	525	7.0	7.0	6.5	6.0	2.0	2.0	2.0	4.0	MA	Good	Fair Large buttress roots Large bark wound occluding on West side at base of trunk Major deadwood in crown Stubs Good shape and form	Crown clean within 6 months	>40	B1+2
63	London Plane <i>Platanus x hispanica</i>	20	S	665	9.0	7.0	7.0	8.0	5.0	5.0	4.0	6.0	M	Good	Good Part of linear group Bark wound on trunk on North side Old pruning wounds in crown occluding Minor deadwood and stubs	None required at time of survey	>40	B1+2
64	London Plane <i>Platanus x hispanica</i>	30	S	1110	10.0	9.0	9.0	10.0	3.0	6.0	3.5	2.5	M	Good	Good Bifurcated at 5m above ground level Large buttress roots Old pruning wounds in crown Minor deadwood in crown	None required at time of survey	>40	A1+2

Tree No	Species	H't (m)	Single/ Multi-Stemmed (S or MS)	Stem Diam (mm)	Branch Spread (m)				H't of Crown AGL (m)				Age	Physio-logical Condition	Structural Condition and Relevant Comments	Preliminary Management Recommendations	Est. Rem. Contrib. (Yrs)	Cat
					N	E	S	W	N	E	S	W						
65	London Plane <i>Platanus x hispanica</i>	18	S	650	5.5	8.0	9.0	8.0	6.0	4.0	6.0	4.5	M	Good	Fair Bark wound leading to large internal cavity at base on West side of trunk occluding well Crown shape distorted due to group pressure Part of linear group Previously crown lifted Minor deadwood in crown High visual amenity value	None required at time of survey	>40	B1+2
66	Chestnut Leaf Holly <i>Ilex x koehneana</i>	7	MS	160	1.5	2.0	1.5	2.0	1.0	1.0	1.0	1.0	MA	Good	Good Bifurcated at 1.25m above ground level Low hanging branches Minor deadwood in crown Developing tree	None required at time of survey	>40	C1+2
67	Chestnut Leaf Holly <i>Ilex x koehneana</i>	6	S	140	1.5	1.0	1.0	1.0	1.0	1.0	1.0	1.0	MA	Fair	Fair Developing tree Low hanging branches Minor deadwood in crown	None required at time of survey	>40	C1+2
68	London Plane <i>Platanus x hispanica</i>	22	S	1075	12.0	10.5	10.0	12.0	3.0	4.0	5.0	4.0	M	Good	Good Part of linear group Hanging branch in crown on North side Minor deadwood and stubs Epicormics on trunk and in crown Ivy on trunk	None required at time of survey	>40	A1+2
69	Chestnut Leaf Holly <i>Ilex x koehneana</i>	5	S	170	1.0	1.5	1.5	2.0	1.0	1.5	1.0	1.0	MA	Good	Good Developing tree Low hanging branches Bifurcated at 1.25m above ground level Minor deadwood in crown	None required at time of survey	>40	C1+2

Tree No	Species	H't (m)	Single/ Multi-Stemmed (S or MS)	Stem Diam (mm)	Branch Spread (m)				H't of Crown AGL (m)				Age	Physio-logical Condition	Structural Condition and Relevant Comments	Preliminary Management Recommendations	Est. Rem. Contrib. (Yrs)	Cat
					N	E	S	W	N	E	S	W						
70	London Plane <i>Platanus x hispanica</i>	18	S	1100	11.0	8.0	9.0	9.0	3.0	6.0	7.0	4.0	M	Poor	Good Part of linear group Burr on trunk Broken hanging branch in crown Major deadwood in crown over footpath Tree in decline	Remove major deadwood and broken hanging branch within 3 months	10-20	C1+2
71	London Plane <i>Platanus x hispanica</i>	20	S	1100	16.0	11.0	9.0	11.0	2.0	5.0	6.0	6.0	M	Good	Good Part of linear group Ivy on trunk Elder grows from base Epicormics in crown Minor deadwood and stubs Old pruning wounds in crown occluding Previously crown reduced on South side	None required at time of survey	>40	A1+2
72	Chestnut Leaf Holly <i>Ilex x koehneana</i>	7	MS	150	1.0	1.0	1.0	1.0	1.5	1.5	1.5	1.5	MA	Good	Good Bifurcated at 1.5m above ground level Developing tree Low hanging branches Minor deadwood in crown	None required at time of survey	>40	C1+2
73	Chestnut Leaf Holly <i>Ilex x koehneana</i>	5	S	120	1.0	1.5	1.0	1.0	1.5	1.5	1.5	1.5	MA	Fair	Fair Low hanging branches Grows under T73 Developing tree Sparse crown Minor deadwood in crown	None required at time of survey	>40	C1+2
74	London Plane <i>Platanus x hispanica</i>	22	S	925	13.5	11.5	8.0	11.0	2.0	6.0	6.0	5.0	M	Good	Good Part of linear group Old pruning wounds on trunk and in crown occluding Previously crown reduced on South side Epicormics in crown Minor deadwood and stubs	None required at time of survey	>40	A1+2

Tree No	Species	H't (m)	Single/ Multi-Stemmed (S or MS)	Stem Diam (mm)	Branch Spread (m)				H't of Crown AGL (m)				Age	Physio-logical Condition	Structural Condition and Relevant Comments	Preliminary Management Recommendations	Est. Rem. Contrib. (Yrs)	Cat
					N	E	S	W	N	E	S	W						
75	Chestnut Leaf Holly <i>Ilex x koehneana</i>	6	S	160	1.5	1.5	1.0	1.5	1.5	1.0	1.5	1.0	MA	Good	Good Low hanging branches Developing tree Minor deadwood in crown	None required at time of survey	>40	C1+2
76	Hybrid Black Poplar <i>Populus x euroamericana</i>	22	S	965	13.0	13.0	12.0	13.0	3.0	3.0	3.0	3.0	M	Good	Good Minor deadwood in crown Broken branch Stubs in lower crown Compacted grass area beneath crown Good shape and form High visual amenity value Previously crown lifted	None required at time of survey	20-40	B1
77	London Plane <i>Platanus x hispanica</i>	21	S	980	11.0	10.0	11.0	9.0	3.0	6.0	6.0	3.0	M	Good	Good Large buttress roots Part of linear group Previously crown lifted High visual amenity value Burrs throughout trunk Good shape and form Birds nest in crown	None required at time of survey	>40	A1+2
78	London Plane <i>Platanus x hispanica</i>	20	S	960	12.0	10.0	9.0	10.0	2.0	2.0	6.0	6.0	M	Good	Good Part of linear group Large buttress roots Old pruning wounds in crown occluding Previously crown reduced on South side Epicormics in crown Minor deadwood and stubs	None required at time of survey	>40	A1+2
79	London Plane <i>Platanus x hispanica</i>	21	S	800	12.0	8.0	7.0	6.0	7.0	5.0	5.0	8.0	M	Good	Good Part of linear group Surrounded by tarmac Old pruning wounds in crown Minor deadwood in crown Crown shape distorted due to group pressure	None required at time of survey	>40	B1+2

Tree No	Species	H't (m)	Single/ Multi-Stemmed (S or MS)	Stem Diam (mm)	Branch Spread (m)				H't of Crown AGL (m)				Age	Physio-logical Condition	Structural Condition and Relevant Comments	Preliminary Management Recommendations	Est. Rem. Contrib. (Yrs)	Cat
					N	E	S	W	N	E	S	W						
80	London Plane <i>Platanus x hispanica</i>	22	S	940	6.0	10.5	11.0	11.0	16.0	11.0	8.0	6.0	M	Good	Good Large buttress roots Part of linear group Previously crown lifted Old pruning wounds occluded Crown shape distorted due to group pressure Surrounded by hard standing High visual amenity value	None required at time of survey	>40	B1+2
81	Horse Chestnut <i>Aesculus hippocastanum</i>	18	S	840	9.0	10.0	11.0	9.0	2.0	1.5	2.0	2.0	M	Good	Good Tree leans slightly to East side Multi-stemmed at 3m above ground level Rubbing and crossing branches Minor deadwood and stubs in crown Low hanging branches	None required at time of survey	20-40	B1+2
82	London Plane <i>Platanus x hispanica</i>	24	S	830	9.0	11.0	9.0	9.0	7.0	5.0	6.0	6.0	M	Good	Good Large buttress roots Major deadwood in crown Dead hanging branch in crown over footpath High visual amenity value	Remove major deadwood and dead hanging branch over footpath within 1 month	>40	A1+2
83	Chestnut Leaf Holly <i>Ilex x koehneana</i>	5	S	90	1.0	1.0	1.0	1.0	1.0	1.0	1.0	1.0	MA	Fair	Fair Bark wound on trunk Developing tree Low hanging branches Minor deadwood in crown	None required at time of survey	20-40	C1

Tree No	Species	H't (m)	Single/ Multi-Stemmed (S or MS)	Stem Diam (mm)	Branch Spread (m)				H't of Crown AGL (m)				Age	Physio-logical Condition	Structural Condition and Relevant Comments	Preliminary Management Recommendations	Est. Rem. Contrib. (Yrs)	Cat
					N	E	S	W	N	E	S	W						
84	London Plane <i>Platanus x hispanica</i>	24	S	1100	11.0	14.0	6.5	7.0	4.0	3.0	5.5	7.0	M	Good	Good Large buttress roots Major deadwood in crown over footpath Crown shape distorted due to group pressure Burrs on trunk High visual amenity value Previously crown lifted	Remove major deadwood over footpath within 3 months	>40	B1+2
85	London Plane <i>Platanus x hispanica</i>	24	S	1035	9.0	14.0	9.0	10.0	4.5	6.0	6.0	4.0	M	Good	Good Large buttress roots Major deadwood in crown over footpath Crown shape distorted due to group pressure Burrs on trunk High visual amenity value Previously crown lifted	Remove major deadwood over footpath within 6 months	>40	B1+2
86	London Plane <i>Platanus x hispanica</i>	20	S	710	8.0	7.0	11.0	11.0	6.0	10.0	8.0	6.0	M	Good	Good Part of linear group Major deadwood in crown to East side over path Old pruning wounds in crown occluding Epicormics in crown	Remove major deadwood within 1 month	>40	B1+2
87	Common Ash <i>Fraxinus Excelsior</i>	23	S	500	2.0	1.5	5.0	6.0	8.0	10.0	8.0	7.0	M	Fair	Fair Bifurcated at 6m above ground level Previously crown reduced Bark wounds on trunk Old pruning wounds occluding Tall and etiolated due to group pressure Old pruning wounds in crown Epicormics on trunk and in crown	None required at time of survey	10-20	C1

Tree No	Species	H't (m)	Single/ Multi-Stemmed (S or MS)	Stem Diam (mm)	Branch Spread (m)				H't of Crown AGL (m)				Age	Physio-logical Condition	Structural Condition and Relevant Comments	Preliminary Management Recommendations	Est. Rem. Contrib. (Yrs)	Cat
					N	E	S	W	N	E	S	W						
88	London Plane <i>Platanus x hispanica</i>	18	S	645	6.0	2.0	7.0	10.0	3.0	8.0	8.0	5.0	M	Good	Good Part of linear group Decay at base on East side Crown shape distorted due to group pressure Old pruning wounds in crown occluding	None required at time of survey	>40	B1+2
89	London Plane <i>Platanus x hispanica</i>	20	S	760	11.0	12.0	11.0	10.0	2.0	2.0	3.0	6.0	M	Good	Good Part of linear group Epicormics in crown Old pruning wounds in crown occluding Minor deadwood in crown	None required at time of survey	>40	B1+2
90	London Plane <i>Platanus x hispanica</i>	20	S	880	7.0	10.0	7.0	6.0	4.0	4.0	4.0	4.0	M	Good	Good Large buttress roots Epicormics on trunk and in crown Previously crown reduced Old pruning wounds in crown Minor deadwood in crown	None required at time of survey	>40	B1+2
91	London Plane <i>Platanus x hispanica</i>	22	S	780	9.0	10.5	8.5	8.5	6.0	4.5	4.5	7.0	M	Good	Good Large buttress roots Part of linear group Previously crown lifted High visual amenity value Old wire attached to trunk on East side Good shape and form	None required at time of survey	>40	A1+2
92	False Acacia <i>Robinia pseudoacacia</i>	16	S	710	5.0	5.5	7.0	7.0	3.0	4.0	2.0	4.0	M	Fair	Fair Unable to verify health and safety due to dense ivy on trunk and in crown Multi-stemmed at 5m above ground level Storm damage in crown Minor deadwood and stubs in crown Tree in decline Epicormics on trunk	Sever and remove a 300mm section of ivy, clear around base and re-survey within 1 month	10-20	C1+2 Interim

Tree No	Species	H't (m)	Single/ Multi-Stemmed (S or MS)	Stem Diam (mm)	Branch Spread (m)				H't of Crown AGL (m)				Age	Physiological Condition	Structural Condition and Relevant Comments	Preliminary Management Recommendations	Est. Rem. Contrib. (Yrs)	Cat
					N	E	S	W	N	E	S	W						
93	Hybrid Black Poplar <i>Populus x euroamericana</i>	8	S	140	2.0	2.5	1.5	2.0	2.0	2.0	2.0	2.0	Y	Good	Good Self-set regeneration Old pruning wounds on trunk Developing tree	None required at time of survey	>40	C1
94	Hybrid Black Poplar <i>Populus x euroamericana</i>	23	S	590	6.5	6.0	6.0	7.0	3.0	3.0	3.0	3.0	M	Good	Good Low hanging branches Epicormics on trunk and in crown Minor deadwood in crown	None required at time of survey	20-40	A1+2
95	Hybrid Black Poplar <i>Populus x euroamericana</i>	20	S	540	12.0	6.0	8.0	8.0	3.0	2.0	2.0	3.0	MA	Fair	Good Epicormics on trunk and in crown Crown shape distorted due to group pressure Mechanical damage to exposed surface roots	None required at time of survey	20-40	B1+2
96	Common Ash <i>Fraxinus Excelsior</i>	22	S	980	6.0	9.0	14.0	12.0	15.0	3.0	4.5	4.0	M	Good	Good Large buttress roots Crown shape distorted due to group pressure Growing in compacted grass area Epicormics in crown Storm damage leaving bark wound occluding in East side of crown Dead hanging branch in East side of crown Stubs Birds nest in crown	Remove dead hanging branch within 1 month	10-20	C1+2

Tree No	Species	H't (m)	Single/ Multi-Stemmed (S or MS)	Stem Diam (mm)	Branch Spread (m)				H't of Crown AGL (m)				Age	Physio-logical Condition	Structural Condition and Relevant Comments	Preliminary Management Recommendations	Est. Rem. Contrib. (Yrs)	Cat
					N	E	S	W	N	E	S	W						
97	Common Ash <i>Fraxinus Excelsior</i>	13	S	925	5.0	5.0	5.0	5.0	6.0	5.0	7.0	6.0	M	Good	Fair Large burr growing on South side of trunk at 1.5m above ground level Bark necrosis from 2m-4m above ground level on South side Previously pollarded at 10m above ground level Epicormics on trunk and in crown Poor pruning undertaken	None required at time of survey	10-20	C1+2
98	Willow <i>Salix spp</i>	8	S	420	5.0	5.0	5.0	5.0	2.0	2.0	3.0	4.0	MA	Fair	Good Epicormics in crown Previously pollarded at 6m above ground level Minor deadwood and stubs in crown Old pruning wounds occluding and decaying in crown	None required at time of survey	20-40	C1+2
99	Hybrid Black Poplar <i>Populus x euroamericana</i>	12	S	880	5.0	3.0	4.0	3.0	4.0	4.0	4.0	4.0	M	Fair	Fair Previously pollarded Epicormics form new crown Old pruning wounds on trunk and in crown Epicormics on trunk	None required at time of survey	20-40	C1
100	Common Lime <i>Tilia x europaea</i>	16	S	570	9.0	6.0	8.0	5.0	2.0	1.5	1.5	1.5	MA	Fair	Good Rubbing and crossing branches Low hanging branches Tight forks with included bark	None required at time of survey	20-40	B1+2

Tree No	Species	H't (m)	Single/ Multi-Stemmed (S or MS)	Stem Diam (mm)	Branch Spread (m)				H't of Crown AGL (m)				Age	Physio-logical Condition	Structural Condition and Relevant Comments	Preliminary Management Recommendations	Est. Rem. Contrib. (Yrs)	Cat
					N	E	S	W	N	E	S	W						
101	Common Ash <i>Fraxinus Excelsior</i>	20	S	940	9.0	11.0	12.0	9.0	3.0	4.0	3.0	4.0	M	Good	Good Low hanging branches Old pruning wounds on trunk and in crown, some forming cavities Crown dieback Minor deadwood in crown Rope occluded in branch on West side of canopy	Remove major deadwood within 6 months	>40	A1
102	Horse Chestnut <i>Aesculus hippocastanum</i>	15	S	720	6.5	7.0	9.0	9.0	3.0	3.0	4.0	3.0	M	Fair	Poor Bacterial bleeding canker throughout crown Vandalism cause large bark wounds almost encircling trunk Minor deadwood and stubs Small hazard beam fracture in lower branches on West side of crown	Advise removal	<10	R
H1	Beech <i>Fagus spp</i>	1.5	MS	<75	-	-	-	-	0.0	0.0	0.0	0.0	Y	Good	Good Developing hedge Low hanging branches	Annual clipping	20-40	C1





COMPANY PROFILE, QUALIFICATIONS AND EXPERIENCE

CBA Trees, one of the leading professional arboricultural consultancy practices in the UK is based in Colden Common, Hampshire. There are currently three consultants working from this building, all of varying expertise and qualifications with two further consultants working from Cardiff, and Somerset. There is also a team of three trainee consultants/surveyors at varying stages in their training, together with a student from a local college also working from Colden Common.



The team is headed by its Chairman **Colin Bashford** *MBE M.Arb., F.Arbor.A, MAE* who, with over 40 years in the profession, is considered to be one of the most eminent professionals in this field and is a Registered Consultant of the Arboricultural Association, a Law Society approved Expert Witness and a member of the Academy of Experts.

Colin has worked on private estates; for Local and Central Government where in the latter he advised up to Ministerial level for government bodies, agencies and departments, as well as acting as the Inspecting Officer on Appeals, or Technical Assessor at Public Local Inquiries.

In 1990, Colin retired from public service, but after numerous contacts and offers from the industry, formed a sole practitioner company, this has since blossomed into a thriving Practice which was formally incorporated in 1993.

His expertise leads Colin to act as an expert witness on behalf of well-known household names. A listing of some of the clients of CBA Trees can be found on page 4 of this document.

Colin is a past Chairman of the Board of Governors for Merrist Wood College in Guildford, and has served for many years on the Board of Directors of the International Society of Arboriculture and that of ISA Europe Ltd. He is currently a Vice President of the International Society of Arboriculture.



Ken Sheppard, our Senior Consultant, joined CBA Trees as a consultant in November 2005 and works mainly from his office in Cardiff, covering projects throughout the UK. He is a member of the Institute of Chartered Foresters (by examination) and a Fellow of the Arboricultural Association; he also holds the following qualifications relevant to arboriculture:

- Royal Forestry Society Diploma of Arboriculture
- Arboricultural Association Technician's Certificate

Prior to joining CBA Trees, Ken spent a period of eight years as a Tree Preservation Officer with Cardiff City Council. This has provided him with an extensive and varied experience of arboricultural work within the Local Authority field. During the course of this work, he was frequently required to attend Court as an expert witness. His past experience of the commercial sector includes employment with a landscaping company, as well as experience as a groundsman/arboricultural foreman with a local tree surgery company.



Paul Hambidge joined CBA trees as a Senior Consultant in April 2007 and now covers the West Country from his satellite office in Newton Abbot. He is a professional member of the Institute of Chartered Foresters and a professional member of the Arboricultural Association. He has a horticultural background and obtained the OND in Amenity Horticulture (with Distinction) in July 1982. He has held the City and Guilds 014 Certificate in Arboricultural (with credit) also since 1982. He has had 17 years experience in local government departments, employed in parks and tree officer posts at management level.



Stefan Rose joined CBA Trees in 1998 as a junior surveyor/arborist, and he has gained experience in almost every field of our work, under guidance and supervision of the senior consultants. Stefan holds the Arboricultural Association Technician's Certificate, and now as a Consultant, he takes instructions from his own expanding client base, as well as assisting our Principal Consultant on prestigious casework.

Stefan continues his studies towards the Professional Diploma in Arboriculture and maintains a supervisory role with our young surveyors and trainees.



Alex Monk has had many years of experience as an independent tree surgeon/surveyor, running his own business in Hampshire. He holds the National Certificate in Arboriculture, and is has recently successfully completed his studies to attain the Arboricultural Association Technician's Certificate.

Alex came to CBA Trees in May 2004 as a trainee surveyor/consultant, soon became a reliable and trusted member of staff, and is now a Consultant with his own extensive client base.



Our surveying team includes:



Martin Steele spent a year with CBA Trees in 2004 as part of his studies at Myerscough College in Lancashire. Re-joining the company as a Senior Surveyor in 2006, he is now studying towards the Professional Diploma in Arboriculture and already holds the following qualifications relevant to arboriculture:

- Foundation Degree in Science Arboriculture
- National Diploma in Arboriculture
- National Certificate in Arboriculture



Graham Sear joined CBA in November 2005 and had, until that time, worked for several years in the field of tree surgery and as a tree inspector for Local Authorities. Graham is now a Senior Surveyor, undertaking Tree Surveys, Health & Safety Audits. He provides Constraints Advice and undertakes Arboricultural Implications Assessments for our clients. He holds a National Diploma in Arboriculture, and has recently successfully attained the Arboricultural Association Technician's Certificate.



Richard Harris joined CBA Trees in April 2007 as a trainee surveyor after working as a tree surgeon for 8 years both as an employee and in a self-employed capacity. He has now progressed to Consulting Arborist, and is regarded as a mature, well-respected member of staff. He is now responsible for Health & Safety Audits, British Standard Surveys, Constraints Advice, Implication Assessments etc. Richard is now commencing studies to attain the Arboricultural Association Technician's Certificate, and already holds the HND Forestry qualification.



All consultants are trained in the use of 'state of the art' decay detection equipment, and other professional tools.



We also offer support to students studying and training in the field of arboriculture, and currently have an arboricultural degree student from Sparsholt College, Winchester.



CBA Trees has its own Graphics Department with the latest 'state of the art' software which, along with the most up to date computer equipment, colour copier and scanning facilities, and two AO colour plotters, enables us to compile expertly produced reports and presentations for our clients. This coupled with the qualifications and experience of our consultancy staff, and the expertise of the office based personnel, enables CBA Trees to be The Complete Arboricultural Consultancy. Listed below are some of the services we provide:

- Arboricultural Consultancy
- Arboricultural Impact Studies & Method Statements
- Trees in Conservation Areas
- Advice on Veteran Trees and Ancient Woodlands
- Expert Witness at PLI, and Court Work
- Arboricultural/Landscape Design
- PLI, Expert Witness and Court Work/Litigation
- Tree Survey Work (street trees, development projects, individual private sites)
- Tree Preservation Order Advice
- Tree Inspections and Hazard Risk Assessments
- Woodland Creation, Maintenance & Management
- Health & Safety issues – Inspections on behalf H&SE
- Arboricultural site and project management

CBA Trees is very proud of its client base that includes the following companies:



Residential Developers

Bryant Homes (Southern) Ltd
Bryant Homes (Weald) Ltd
Wimpey Construction
Alfred McAlpine Limited
McLean Homes (South-West) Ltd
Bovis Homes Limited
Fairview New Homes plc

Beazer Homes plc
Berkeley Homes Ltd
Edward Ware Homes
Bryant Homes (South-West) Ltd
Beechwood Homes Ltd
Taywood Homes Ltd
Heron Homes/Development Ltd

Charles Church Homes
Premier Properties Limited
Persimmon Homes Ltd
Fairclough Homes Ltd
Countryside Properties
David Wilson Developments Ltd



Retail Properties/Parks

CRS Home World Limited
Allied Breweries
John Lewis Partnership

Greene King plc
Tesco Stores Ltd
North Oxfordshire Consortium

J Sainsbury plc
Lidl GmbH UK Ltd



Business Parks

Arlington

Brixton plc

Slough Estates Ltd



Leisure

Haven Europe
BskyB

Brands Hatch Leisure Group Ltd
Royal London Parks

Siblu Holidays
Oasis Projects



Design & Legal

Barton Willmore Partnership
Terra firma Consultancy
Boyer Planning Associates
Acanthus, Lawrence & Wrightson
Cunningham Ellis & Buckle
Penningtons

Tucker Parry Knowles Partnership
Derek Lovejoy Partnership
David Huskisson Associates
Acanthus Ferguson Mann
Masons
RPS Planning, Transport & Environment

Town Planning Consultancy
MacGregor Smith
Lester Aldridge
Denton Hall
Bond Pearce
McKennas



Local Authorities & Government Bodies

Royal Borough of Kensington & Chelsea
Surrey Heath Borough Council
Borough of Bexley
Highways Agency
Department of Transport
Test Valley Borough Council

Rushmoor Borough Council
West Sussex County Council
Interserve Defence Services
Basingstoke Borough Council
Southampton City Council
Aspire Defence

Royal Borough of Kingston
Poole Borough Council
Hampshire County Council
Elmbridge Borough Council
Ministry of Defence



Administration Services

Our professional service to clients, which was recently awarded ISO9001 accreditation, could not be achieved without a committed office based staff, headed up by Anne Phillips, Operations Director. We pride ourselves in having recruited an excellent team which provides a prompt and courteous response to our clients.

In an effort to make this task easier, our administration staff are provided with:

- Internet and email access for all users
- Up to date computer hardware with state of the art word processing packages capable of reading and transferring data by network and email
- Spacious and modern offices
- An extensive library of technical books and information literature
- Modern telephone system and ASDL Broadband for fast delivery of data, unlimited volume.

CBA Trees can be found at Apex House, Apex Centre, Church Lane, Colden Common, Winchester, Hampshire SO21 1TN (Tel:01962 715407).

For further information, visit our web site at www.cbatarees.com (currently under reconstruction) which gives more detail of our expertise, and of course our staff are always willing to help answer any queries you may have.

Post Installation Re-Inspection Report

For

ARD Playgrounds

at

Shepherds Bush Green Play Area

Inspected By

MARIA COOK RPii

ON

14th November 2012



Craigdene Limited
99 Pilgrims Road, Halling, Rochester, Kent, ME2 1HW
01634 240384

E-Mail mariacook@craigdene.co.uk
www.craigdene.co.uk

POST INSTALLATION INSPECTION

PRELIMINARY NOTES

The play equipment and safer surfacing in this report has been assessed against European Standards BS EN 1176 and BS EN 1177, 2008.

Although the standards are not mandatory in the UK, the Health & Safety Executive have made it clear that whilst compliance is recommended, it is the risk assessment of the equipment that is of paramount importance. The HSE state compliance to the Standards does not remove the operator's responsibility to ensure the equipment is safe, and failure to comply does not mean that the equipment is dangerous. The Courts have also confirmed that compliance does not remove the operator's responsibility to provide safe areas of play and that BS EN 1176 cannot be used as defence in the event of litigation.

BS EN 1176 requires an identification label with manufacturer's details and date of manufacture is fixed to the equipment. Without a label this would fail BS EN 1176 and this is identified in the report as Low Risk. The client should bear in mind that some items are difficult to label i.e. rubber stepping items and acceptance of such items is recommended.

Some items use "kite marks" as a form of certification that indicates compliance to BS EN 1176. However, installation can affect compliance to the Standards and therefore fail during the inspection. A roundabout or seesaws with incorrect clearance are examples.

The safer surfacing should meet the requirements of BS EN 1177 and BS 7188. It is recommended that a copy of the certification to these standards is obtained from the supplier. It is not possible for the inspector to carry out on site penetration testing but certification should confirm compliance. An approximate depth has been noted in the report.

Site: **Shepherds Bush Green Play Area**

Date: **14.11.12**

Inspection Completed At: **xxxxxx**

GENERAL COMMENTS

The play areas were re-inspected on 14th November 2012 following the initial Post Installation inspection on 10th October, 2012. Remedial work had been carried out to several items. However, outstanding work is recommended to the following:

The basket swing requires adjustment to give the correct clearance.

The firepole to the slide unit requires replacement to allow a minimum of 350mm clearance from the platform as an injury to the head or back may occur in its current condition. The diameter of the tube also requires reducing to between 16-45mm.

It is recommended that these modifications are carried out prior to opening of the playground.

Other work noted is being addressed.

Location The play area is located on a green surrounded by a main road system. There are pedestrian crossings to the green.

DDA The site is accessible.

JUNIOR AREA



Design

The single point tyre swing has been installed in the centre of an area that may be accessed by children running to other equipment.

Low Risk

The Street Musicians is located close to the safer surface area of the basket swing

Low Risk

General Surface

The safer surfacing has been laid in areas of several colours and low mounds have been installed to create a type of barrier around equipment. The mounds are not easily visible to the eye and may create a trip whilst children are playing and running around the play area.

Moderate Risk

The following were inspected and found to be in good order:

Seats x 4



Fencing

Steel



The following work should be noted:

Gates x 3



The lockable gates are closing too slow and require adjusting to close between 3-8 seconds.

The posts have been cut out to allow the locking fixing. There are sharp edges that require improvement.



There is a finger trap to the gate and post on the hinge side.

Low Risk



There is no self closer to the gate adjacent the Supanova.
This will be installed in the future.

The gates are not locking at the catch as the gates are closing too slow. The self closers require adjusting to close to the post and lock.

EQUIPMENT

Nest Swing

Manufacturer – Kompan

Critical Fall Height: 1 500mm



Labelling:

The item has been labelled with manufacturer's details to BS EN 1176 recommendations.

BS EN 1176 Compliance: No

1. The basket has been installed too low (270mm). The minimum height for the underside should be no less than 400mm.

Moderate Risk



Installation:

1. Refix the basket to the correct height.
2. The post caps are missing. Replacement is recommended.

Safer Surface:

Wet Pour

Depth: 100 mm

BS EN 1176 Compliance: Yes

Installation: Good

Supanova

Manufacturer – Kompan

Critical Fall Height: 600mm



Labelling: The item has been labelled with manufacturer's details to BS EN 1176 recommendations.

BS EN 1176 Compliance: Yes

Installation: Good

Safer Surface: Wet Pour

Depth: 40 / 50 mm

BS EN 1176 Compliance: Yes

Installation: Good

Sound Walls 1 530mm high

Manufacturer – Richter Spielgeräte GmbH



Installation: Good

Safer Surface: Wet Pour **Depth:** 60 mm

Installation: Good

The vertical edges to the walls are sharp. The inspector was advised that a rubber cover would be fixed.

Note: The top of the wall is easily accessible by children. The wet pour, however, will sustain the fall height of 1 530mm.

Street Musicians

Manufacturer – Richter Spielgeräte GmbH



Labelling:

The item has been labelled with manufacturer's details to BS EN 1176 recommendations.

Installation:

Good

The vertical edges to the walls are sharp. The inspector was advised that a rubber cover would be fixed.

Safer Surface:

Wet Pour

Depth:

60 mm

Installation:

Good

Sound Wall

Manufacturer – Richter Spielgeräte GmbH



Labelling:

The item has been labelled with manufacturer's details to BS EN 1176 recommendations.

Installation:

Plastic covering requires removal from the mirrors before opening.



Safer Surface:

Wet Pour

Depth:

70 mm

BS EN 1176 Compliance: Yes

Installation: Good

Climbing Wall

Manufacturer – Richter Spielgeräte GmbH

Critical Fall Height: 2 950mm



Installation:

1. The vertical edges to the walls are sharp. The inspector was advised that a rubber cover would be fixed.

Safer Surface: Wet Pour **Depth:** 100+ mm

BS EN 1176 Compliance: Yes

Installation: Good

Climbing Wall & Slide

Manufacturer – Eibe

Critical Fall Height: 2 080mm

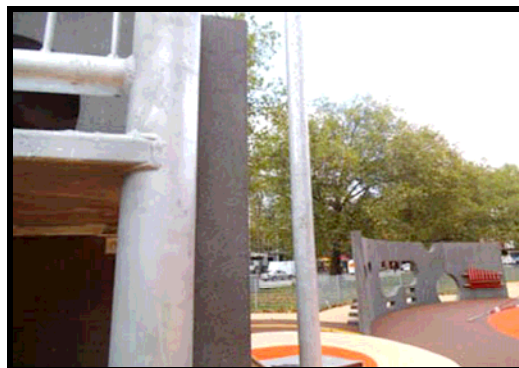


Labelling:

The item has been labelled with manufacturer's details to BS EN 1176 recommendations.

BS EN 1176 Compliance: No

1. The diameter of the firepole should meet the 'GRIP' recommendations of 16mm-45mm. The current width of the firepole is 60mm. **Moderate Risk**
2. The distance from the platform to the firepole should be a minimum of 350mm. The current distance is 300mm. **Moderate Risk**



Installation:

1. The vertical edges to the walls are sharp. The inspector was advised that a rubber cover would be fixed.

Safety Note: Access by the ladder to the platform is difficult and could be improved with handgrips to the posts. ***Moderate Risk***

The barrier rail is 1 040mm above the platform and difficult to reach from the top ladder rung.



The vertical barrier rails to one side of the platform are the only means of holding on to get onto the platform. These bars are less than 16mm and are bending when held and will eventually break at the weld.



Safer Surface: Wet Pour

Depth: 100 mm

BS EN 1176 Compliance: Yes

Installation: Good

One Seat Swing

Manufacturer – Kompan

Critical Fall Height: 1 200mm



Labelling: The item has been labelled with manufacturer's details to BS EN 1176 recommendations.

BS EN 1176 Compliance: Yes

Installation: Good

Safer Surface: Wet Pour **Depth:** 70 mm

BS EN 1176 Compliance: Yes

Installation: Good

Rock-It

Manufacturer – Kompan

Critical Fall Height: 300mm



Labelling: The item has been labelled with manufacturer's details to BS EN 1176 recommendations.

BS EN 1176 Compliance: Yes

Installation: Good

Safer Surface: Wet Pour **Depth:** 80 mm

BS EN 1176 Compliance: Yes

Installation: Good

Note: String requires removal from the post prior to opening.

Dino Swing with Tyre
Manufacturer – Kompan

Critical Fall Height: 1 700mm



Labelling: The item has been labelled with manufacturer's details to BS EN 1176 recommendations.

BS EN 1176 Compliance: No

1. The chains are twisting when the tyre is rotating. **Low Risk**
The manufacturer will be inspecting the item in the near future.

Installation: Good

Safer Surface: Wet Pour **Depth:** 90 mm

BS EN 1176 Compliance: Yes

Installation: Good

Space Net

Manufacturer – Richter Spielgeräte GmbH

Critical Fall Height: 1 800mm



Labelling: The item has been labelled with manufacturer's details to BS EN 1176 recommendations.

BS EN 1176 Compliance: Yes

Installation: Good

Safer Surface: Wet Pour **Depth:** 100 mm

BS EN 1176 Compliance: Yes

Installation: Good

TODDLER AREA



Design

There is insufficient spacing between the spring seesaw and roundabout.



DDA

The site is accessible

The following were inspected and found to be in good order:

Fencing
Gates x 2
Tree Seat & Decking

EQUIPMENT

2 Bay 2 Flat seats & 2 Cradle seats with antiwraps

Manufacturer – SMP Playgrounds



Labelling: The item has been labelled with manufacturer's details to BS EN 1176 recommendations.

Installation: Good

Safer Surface: Wet Pour **Depth:** 70 mm

BS EN 1176 Compliance: Yes

Installation: Good

Toddler Unit

Manufacturer – Kompan

Critical Fall Height: 1 200mm



Labelling: The item has been labelled with manufacturer's details to BS EN 1176 recommendations.

BS EN 1176 Compliance: Yes

Installation: Good

Safer Surface: Bark

BS EN 1176 Compliance: No

1. There is insufficient space the slide chute on one side. One metre is recommended. **Low Risk**



Installation: Good

Spring Bike

Manufacturer – Kompan

Critical Fall Height: 550mm



Labelling: The item has been labelled with manufacturer's details to BS EN 1176 recommendations.

BS EN 1176 Compliance: Yes

Installation: Good

Safer Surface: Wet Pour **Depth:** 45 mm

BS EN 1176 Compliance: Yes

Installation: Good

Double Spring Seesaw

Manufacturer – Kompan

Critical Fall Height: 600mm



Labelling: The item has been labelled with manufacturer's details to BS EN 1176 recommendations.

BS EN 1176 Compliance: Yes

Installation: Good

Safer Surface: Wet Pour

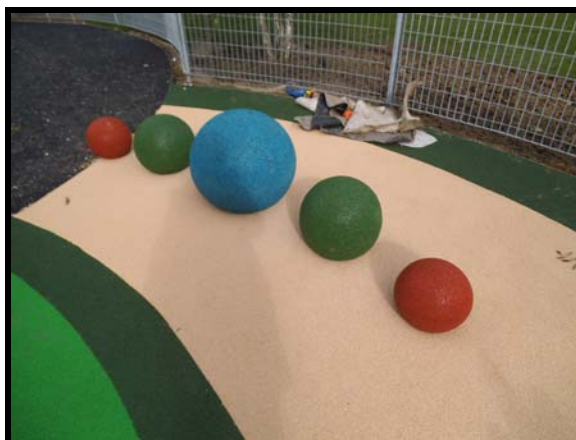
Depth: 40 - 55mm

BS EN 1176 Compliance: Yes

Installation: Good

Rubber Spheres

Critical Fall Height: 250-550mm



Installation: Good

Safer Surface: Wet Pour

Depth: 40 mm

Installation: Good

Roundabout

Manufacturer – Wicksteed Leisure

Critical Fall Height: 400mm

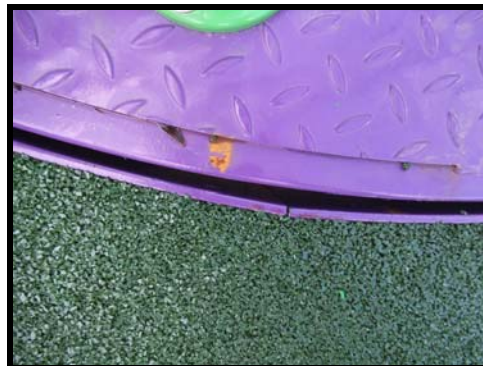


Labelling:

The item has been labelled with manufacturer's details to BS EN 1176 recommendations.

BS EN 1176 Compliance: No

1. The gap between the edge of the roundabout and the ground exceeds 6mm in places. **Low Risk**



Installation:

It should be noted that tree debris, bark and sand may collect in the larger gaps around the edge and fall into the underside tray subsequently affecting the working condition of the bearing.

Safer Surface: Wet Pour

Depth: 50 mm

BS EN 1176 Compliance: Yes

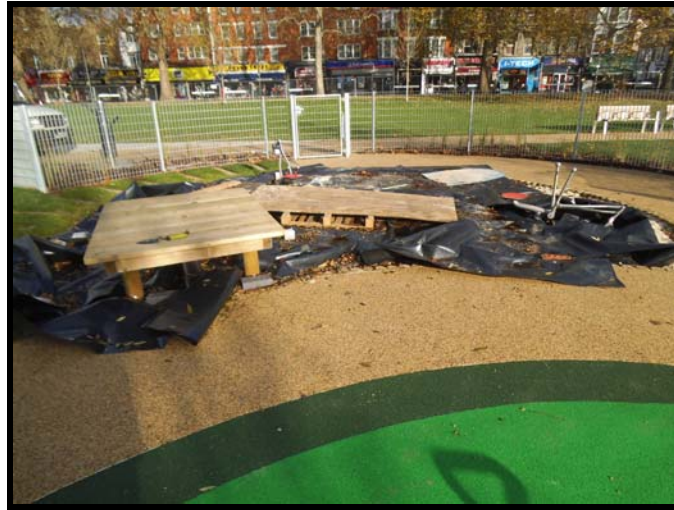
Installation:

1. The fallspace of the spring seesaw overlaps the freespace of the roundabout.

Low Risk



SAND PLAY AREA



2 No. Diggers

Installation:

1. There are areas of entrapment between the arms.



Safety Note: The sand pit area is small, with two play diggers. It should be noted that the diggers rotate and there is a possibility of a clash to children playing in the sand ***Moderate Risk***

3 No. Pigs

Manufacturer – Timberplay



Labelling: The item has been labelled with manufacturer's details to BS EN 1176 recommendations.

BS EN 1176 Compliance: Yes

Installation: Good

Surface: Grass

BS EN 1176 Compliance: Well-maintained grass is suitable under this item although ground erosion will occur in high use areas.

Installation: Good

Tree Trunks



Installation:

1. The straight edges to the log ends require rounding over.
Low Risk



Surface: Grass

BS EN 1176 Compliance: Well-maintained grass is suitable under this item although ground erosion will occur in high use areas

Vertical Logs



Installation:

Good