

H&F 2030

CLIMATE AND ECOLOGY STRATEGY



Contents

What is the climate emergency in H&F?	3	Engagement, education and influence	13
H&F's 2030 vision	4	Finance and decision-making	14
Wider benefits of action	5	Green economy	15
Our current emissions	6	References	16
Strategy on a page	7		
Challenge 1. Homes, buildings and energy	8		
Challenge 2. Travel	9		
Challenge 3. Things we use	10		
Challenge 4. Ecology	11		
Challenge 5. Adapting to a changing climate	12		

What is the climate emergency in H&F?

Globally

- Sea levels have risen by 0.2m, with up to 1m projected by 2100¹
- Frequent and more severe disasters are already occurring as a result of human-caused emissions²



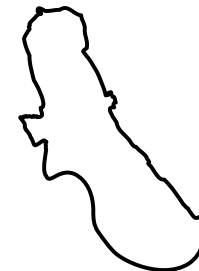
Nationally

- Heat-related deaths to increase 500% by 2080³
- 40,000 air pollution-related deaths in the UK per year
- Cold homes cost the NHS £1.4bn per year⁴



In Hammersmith & Fulham

- H&F is vulnerable to high heat, with little green space⁵
- Most of the borough lies within flood risk zones⁵



H&F's 2030 vision

H&F's climate and ecology strategy sets out the route to net zero greenhouse gas emissions by 2030 for the borough.

Its goal is a clean and sustainable future in which human activity works to the benefit of all people and the environment.

It seeks a safe climate for future generations, along with rich ecosystems that support people and nature, a thriving green economy, and the best possible health, wellbeing and quality of life for all our residents.

The transition from fossil fuels will be an empowering and collective effort in which all have a voice, and the challenges and opportunities from change will be shared justly.

Wider benefits of action

- Air quality, including through cycling, walking, electric vehicles, and removal of gas boilers
- Health and wellbeing, including through warm homes, cycling, access to green space, and sustainable diets
- Poverty and equality, through energy efficient, fuel poverty-proof homes, reskilling for green sectors, and access to clean air and green space
- Reducing future costs from the impacts of climate change
- Green growth and local jobs, including supporting White City biotech and local skills for green jobs
- Biodiversity, by increasing and improving green space

Our current emissions

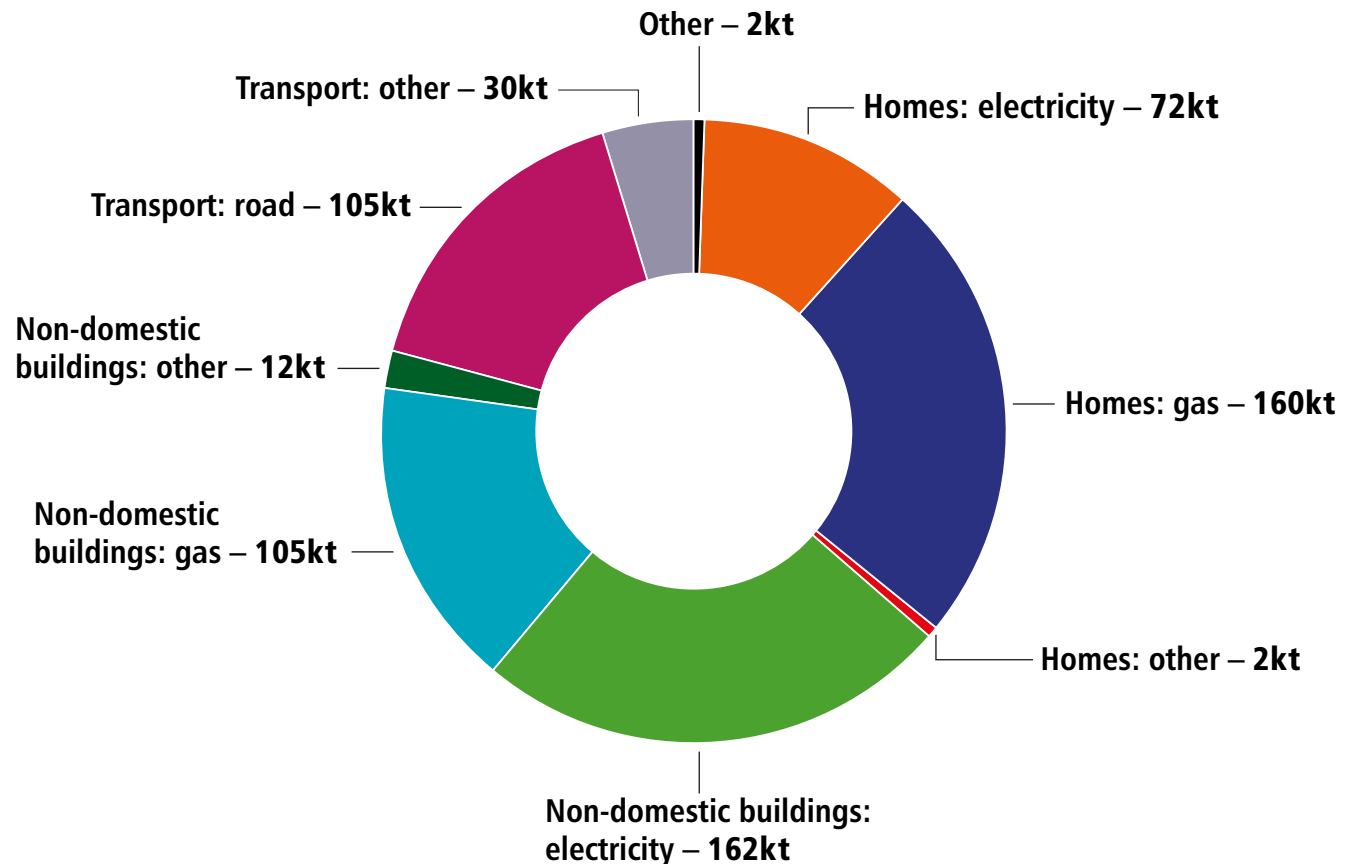
Did you know?

90% of emissions in H&F come from our community – how we all live, work and play together. Visit the [council's website](#) to find out how you can help.

Did you know?

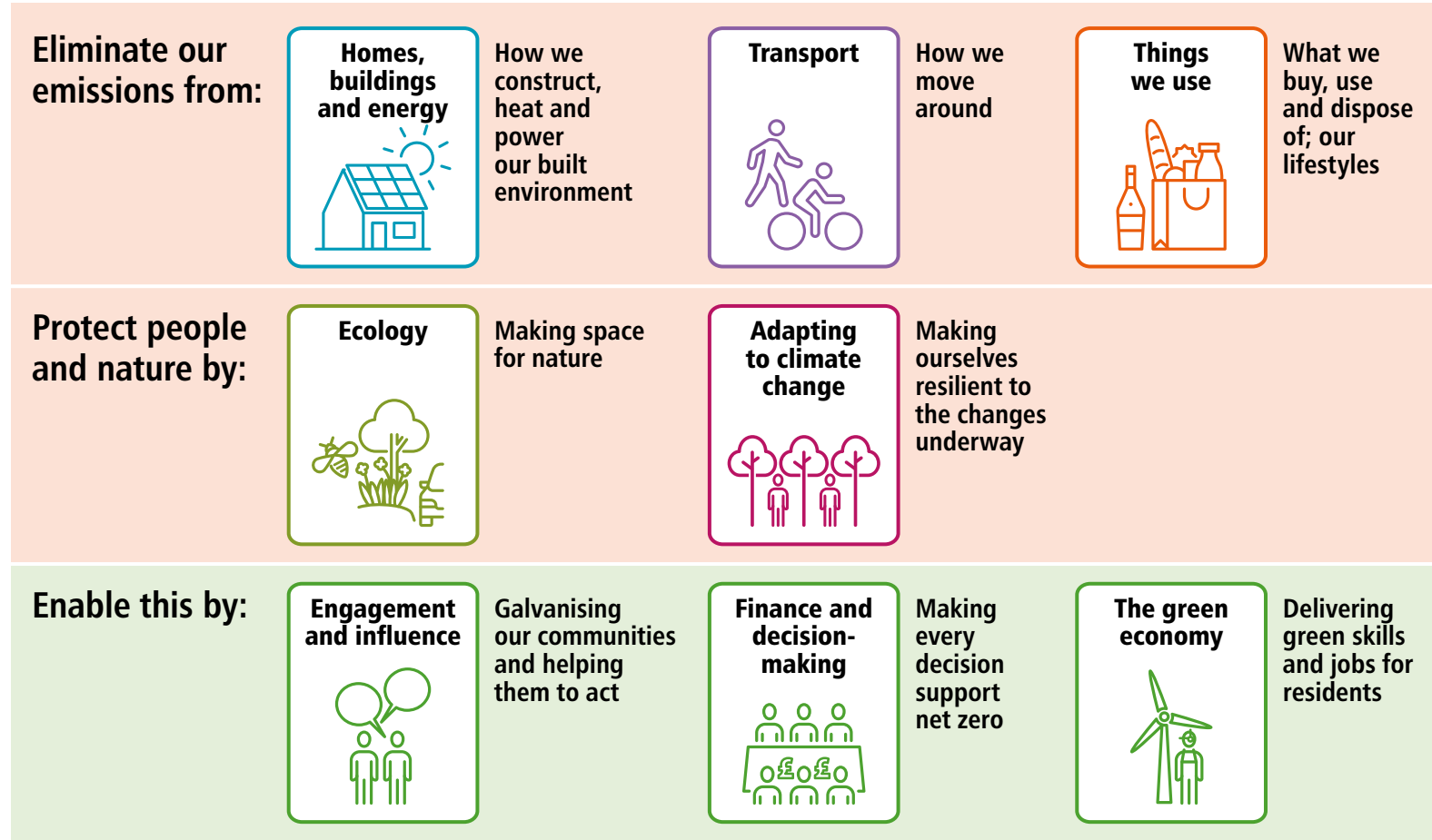
If we included emissions from all the things we eat, buy and use, our total emissions are 2.5 times higher.

H&F borough production-based emissions, 2018 (kilotonnes CO₂e)



Strategy on a page

What do we need to do?



Purpose of the strategy

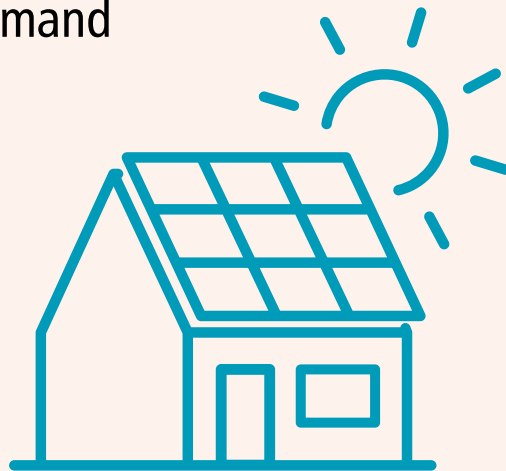
The council will develop its work with local communities and partnerships in delivering net zero, and will reflect the actions and pledges taken by others in future updates to the strategy.

How we'll report progress

We'll report on our emissions year on year. Our Climate Strategy will be an evolving document, with annual updates to report on progress against the actions.

Challenge 1. Homes, buildings and energy

- **H&F's homes account for 36% of the borough's direct emissions**
- **The borough's non-domestic buildings account for 43% of the borough's emissions**
- The majority of emissions from homes are from gas used for heating and hot water
- Poor insulation results in high gas demand and contributes to fuel poverty
- Cold homes cost the NHS around £1.4bn per year



2030 vision for homes, buildings and energy

- All residents in the borough live in comfortable, affordably heated and well-adapted homes that are cost efficient and have zero carbon impact
- All business and organisational buildings are powered sustainably, cost efficient and have zero carbon impact
- Our heat and power is supplied by renewable energy and, where possible, efficient local sources

Challenge 2. Travel

- **Road transport is responsible for 16% of the borough's emissions**
- Personal travel accounts for 72%, predominantly made up of car usage
- Freight accounts for 28% of fuel use
- As well as greenhouse gas emissions, transport creates air and noise pollution, with significant implications for biodiversity and public health



2030 vision for travel

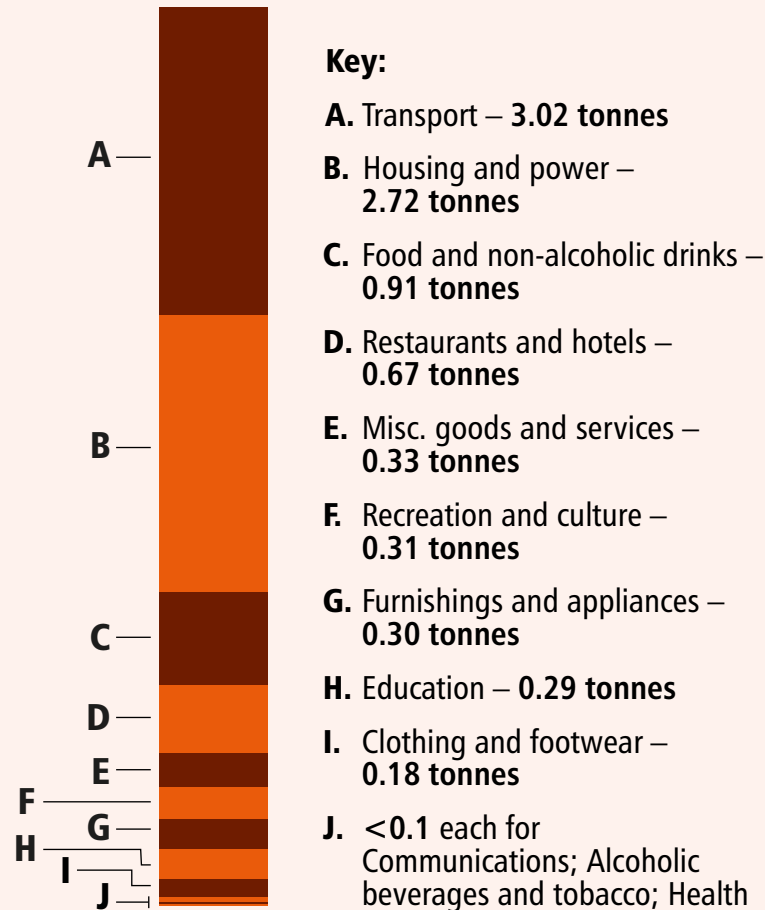
- Residents and visitors to the borough take pleasure in travelling by foot, bike and public transport along safe, healthy and green streets
- The vehicles on our roads will be fewer and zero-carbon
- Residents are able to travel sustainably, and improve their wellbeing with more walking and cycling

Challenge 3. Things we use

- A third of the average person's carbon emissions come from the things we buy and use, including food
- The largest source of carbon emissions is from food, in particular meat and dairy
- Recycling alone isn't enough, we need to reduce the amount of things we use and throw away



Consumption-based emissions per person in H&F (total: 8.82 tonnes)



2030 vision for things we use

- We value all the things we use and understand their impact on the climate
- People are enabled and motivated to make sustainable choices so that little is thrown away, and goods and materials have a second life through reuse, repair and recycling

Challenge 4. Ecology

- **H&F is heavily urbanised**, so we need to be creative about how we make space for nature
- H&F is 28% vegetated with 12% tree canopy cover compared to London-wide averages of 43% and 21%
- 46 UK Biodiversity Action Plan priority species have been recorded in the borough, including nightjars and stag beetles



2030 vision for ecology

- Green space is expanded, enriched, and nurtured by all, providing a haven for nature and a beautiful public realm
- It is properly valued for the benefits it brings, including to biodiversity, clean air, wellbeing, food, and a safe climate, among others

Challenge 5. Adapting to a changing climate

- Summer daytime temperatures in London are expected to be 2.1-4.8°C hotter by mid-century⁶
- **H&F is vulnerable to flooding with much of its area less than five metres above sea level**
- **H&F is particularly vulnerable to 'urban heat island' effects**, in which urban areas can be up to 10°C warmer than surrounding areas
- London is also at risk of water shortages due to climate change



2030 vision for adapting to a changing climate

- Our people and places are prepared for the impacts of climate change
- The borough's buildings, spaces and infrastructure are well adapted, and its residents and communities are resilient
- The health and wellbeing of our residents is protected against climate impacts and risks

Engagement, education and influence

The council will follow six principles for its engagement:

- Work in the open
- Amplify community action
- Champion under-represented voices
- Build collective knowledge
- Create the conditions for change
- Partner and collaborate



Finance and decision-making

- Align our financial and capital planning with the net zero target
- Ensure the council's investments are aligned with its commitment to net zero
- Support net zero through council decision-making, business planning and procurement
- Attract funding, investment and commercial partnerships
- Explore investment in local renewable energy generation, supply and resilience
- Provide regular opportunities for residents to monitor our progress



Green economy

The workstream will aim to:

- Integrate our industrial strategy and climate programme to bring green economy jobs and skills to residents
- Support existing low-carbon pioneers, and build H&F as a leader in the green economy
- Support a green recovery from COVID-19
- Influence and support our local businesses and partners to reach net zero by 2030



References

- 1 Intergovernmental Panel on Climate Change (IPCC), *Special report on the ocean and cryosphere in a changing climate*, **Summary for Policymakers – Special Report on the Ocean and Cryosphere in a Changing Climate (ipcc.ch)**
- 2 IPCC AR6 Climate Change 2021: *The Physical Science Basis*, **Sixth Assessment Report (ipcc.ch)**
- 3 Committee on Climate Change, *Heat and Preventable Deaths in the Health and Social care System*, <https://www.theccc.org.uk/wp-content/uploads/2019/07/Outcomes-Heat-preventable-deaths-case-study.pdf>
- 4&5 Ashden, *Co-benefits of climate action*, **CAC-Chapters-all_new-brand.pdf (ashden.org)**
- 6 Met Office, UK Climate Projections, UKCP18, <https://www.metoffice.gov.uk/research/approach/collaboration/ukcp/index>