

CELEBRATING HAMMERSMITH & FULHAM

A BOROUGH LIKE NO OTHER

INTRODUCTION

Hammersmith & Fulham can rightly be called one of London's smallest boroughs with a big history and even bigger future. From its early human settlements, all manner of peoples and organisations - the Romans, Kings, important figures, and 3 major football clubs (Chelsea, Fulham, and QPR) - have shaped this borough's history. This borough's black history, particularly, has impacted the whole world.

However, this chart is not about the past but the future. That is why if you - or someone you know - is doing something interesting or important please do let us know. We will feature it on the next edition of this chart which will come out in a month's time, or the online version of this chart will be available at: www.lbhf.gov.uk

If you look at this chart you will see some of the people who have contributed towards making Hammersmith & Fulham a special place.

It is not a complete list but an introduction. It can only be completed when all our stories, and your story, are included. Hopefully, you can tell us about what you think needs to be added.

Perhaps you, your family, friends, or someone you think is doing something that should be recognised will be featured on here next month. We are all part of the rich tapestry, past, present and great future of this borough.

LIBRARIES



Hammersmith Library is a listed English Heritage Carnegie Library which is over 100 years old. Its close proximity to local schools and businesses adds to its diverse customer base. We are home to the Local Studies & Archives Service and the Hammersmith & Fulham Law Centre.

Fulham Library is the largest library in the borough and provides the services of a traditional main library but is situated in a largely residential area.

It is home to the Reference Library and houses its legacy Fine Art collection. It was the old central library of Fulham until 1965 when the two boroughs of Fulham and Hammersmith were merged.



Shepherds Bush Library moved in 2009 to be part of Europe's largest shopping complex, Westfield White City. It remained at the heart of the vibrant and diverse community.

The library offers a range of services including Public Network Computers, free Wifi, study space, Under 5 sessions, Arts and Craft sessions, etc. We work with local organisations to support our community whether they are trying to find jobs, by hosting health and wellbeing workshops or by running activities and events.

For more information on libraries in the borough please visit: www.lbhf.gov.uk/libraries

EDUCATION IN HAMMERSMITH & FULHAM

This month we are featuring some amazing work being done in primary schools. However, if you go to our online timeline you can find out the great work secondary and other educational establishments are doing.

Primary Schools, Community primary schools, academies and free schools

Bayonne Nursery School and Children's Centre
James Lee Nursery School
Randolph Beresford Early Years
Centre Vanessa Nursery School
Addison Primary School
Avonmore Primary School
Brackenbury Primary School
Flora Gardens Primary School
Kenmont Primary School
Melcombe Primary School
Miles Coverdale Primary School
Normand Croft Community School
Old Oak Primary School
Sir John Lillie Primary School
Wendell Park Primary School
Wormholt Park Primary School
ARK Bentworth Primary Academy
Ark Burlington Danes Primary Academy
ARK Conway Primary Academy
Ark Swift Primary Academy
Earl's Court Free School Primary

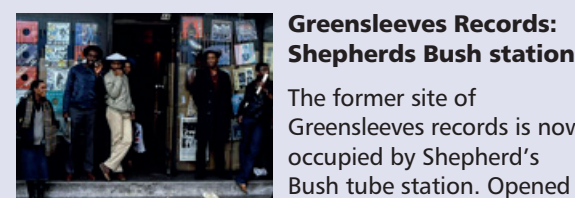
Fulham Primary School
Greenside Primary School
Langford Primary School
Queen's Manor Primary School
Sullivan Primary School
Thomas's Academy
West London Free School Primary
Good Shepherd RC Primary School
All Saints CE Primary School
The Fulham Bilingual
Holy Cross RC Primary School
John Betts Primary School
Larmerier & Sacred Heart Catholic Primary School
St Augustine's Catholic Primary School
St John XXIII Catholic Primary School
St John's RC Primary School
St Mary's RC Primary School
St Paul's CE Primary School
St Peter's CE Primary School
St Stephen's CE Primary School
St Thomas of Canterbury Catholic Primary School



Photos courtesy of Rosemarie Peters and Wendell Park School

HAMMERSMITH & FULHAM TRAILS

In this first edition of this chart we are featuring the first of a number of trails you, your family and friends can explore for yourself. This trail starts with Hammersmith & Fulham's rich musical tradition - at Greensleeves records - and ends in one of its most beautiful parks, Ravenscourt Park. Another trail will be featured on the next chart. If you have stories or locations to add, tell us at: press.office@lbhf.gov.uk



Greensleeves Records:
Shepherds Bush station
The former site of Greensleeves records is now occupied by Shepherd's Bush tube station. Opened in 1977, Greensleeves was a number one label for Caribbean and Caribbean influenced black British music.



Shepherd's Bush Empire:
Shepherd's Bush Green, London, W12 8TT
Shepherd's Bush Empire, now known as the O2 Shepherd's Bush Empire. Built in 1903, it has operated as a music venue since 1994 and many black artists have performed here including Shirley Bassey, Prince, Public Enemy, Soul II Soul and Seal.



Shepherd's Bush Market:
Uxbridge/Goldhawk Road
Opened in 1914, Shepherd's Bush market is home to a diverse range of independent traders selling everything from food and fabric to household goods and electronics.



Fela Anikulapo Kuti:
12 Stanlake Road, W12 7HP
Fela Kuti first lived here when he came to London to study music in 1958. Kuti was a Nigerian singer, multi instrumentalist, bandleader, political activist. He is regarded as the founder of the influential musical style 'Afrobeat'.



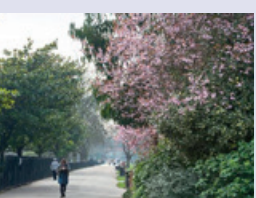
Sri Aurobindo:
49 St Stephens Avenue, W12 8JB
Sri Aurobindo lived here as a teenager from 1884-1887. He was an Indian spiritualist, poet and campaigner for Indian independence who inspired, among others, Mahatma Gandhi.



Labi Siffre:
311 Goldhawk Road, W6 0SZ
Claudius Afolabi 'Labi' Siffre is a black singer, musician and poet. He was born 25 June 1945 at Queen Charlotte's and Chelsea Hospital, which was then based close to this location on Goldhawk Road.



Connie Mark:
24 Invermead Close, W6 0HQ
Born on 21 December 1923 in Jamaica Connie Winifred MacDonald served as a medical secretary in the Auxiliary Territorial Service in WW2. In 1980 she founded the Friends of Mary Seacole, which was later renamed the Mary Seacole Memorial Association.



Ravenscourt Park:
Ravenscourt Gardens, Hammersmith W6 0UA
One of the borough's largest and most attractive parks, it was awarded a Green Flag Award. There are two cafes in the park. The Tea House (through Ravenscourt Gardens) and the W6 Café located within the W6 Garden Centre on Ravenscourt Avenue near King Street.

HAMMERSMITH & FULHAM TIMELINE A SNAPSHOT AT SOME OF THE MAJOR EVENTS IN OUR BOROUGH

Roman invasion of Britain

The Romans invade Britain giving London its original name, Londinium. Evidence of Roman settlement has been found near Fulham Palace and on the Fulham high street.



43AD



1827

Gateway to West London

Hammersmith Bridge was opened by the Prince of Wales at a cost of £71,500, and was designed by Sir Joseph Bazalgette.



1864

New Railway

The original Hammersmith & City line opened in 1864 and now serves 29 stations between Hammersmith and Barking in Essex, sharing that route with parts of the District and Circle lines.

William Morris, Designer and Political Activist

In 1861 Morris co-founded the firm "Morris, Marshall, Faulkner & Co". Morris and his family moved to Kelmscott House, Hammersmith in 1878, just after he had founded the Society for the Protection of Ancient Buildings.



1878



1908

The Franco-British Exhibition

Opening in May 1908, it attracted more than 8 million visitors.

Today, many of the roads in the area are named after African locations and countries which had displays at the White City Exhibition.



1908

First London Summer Olympics

The 1908 Summer Olympics is held in London from 27 April to 31 October 1908 at White City Stadium in White City. It hosts the first modern marathon.

A New market

Shepherd's Bush market opens between Goldhawk Road and Uxbridge Road.

It features traders trading goods and foods of all types from all over the world.



1914

Iconic flyover

The Hammersmith flyover was considered an iconic new landmark for west London, a glimpse of the future.



1961

Bob Marley

The legendary Bob Marley and the Wailers play six concerts at the Hammersmith Odeon.



1976



1987

Janet Olufunmilayo Adegoke

Elected Mayor of Hammersmith and Fulham. She is the first Black woman to become the Mayor of a London borough.



2008

Westfield shopping centre

Situated on the former site of the Franco-Anglo exhibition, it was the largest shopping centre in London at that time.



2022 and beyond...

Race Equality Week 7 to 13 February

Race Equality Week is a yearly UK-wide initiative to address issues racial discrimination that was marked with a number of meetings in the borough.

March

World Book Day and International Women's Day. A plaque is unveiled for Peckings records on Askew Road.

Tombstone to Fanny Easton is unveiled. A paving stone is laid down in front of Charing Cross hospital for Esther Bruce.

TRAILS AND PLAQUES

Did you know that a lot of famous people who had an impact on Black history worked, lived or are laid to rest in Hammersmith & Fulham?

Sadly, they often get left out of history lessons, but it is important to remember them. Here are just a few examples of the Hidden Figures who have helped influence and shape our borough for the better.



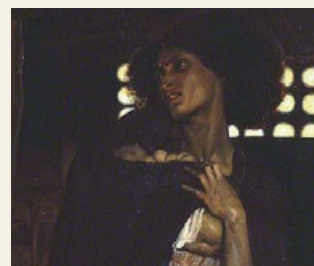
Ellen and William Craft
(1820s-1900)
Hammersmith Freedom fighters



Granville Sharpe
(1757-1813)
Righteous Abolitionist



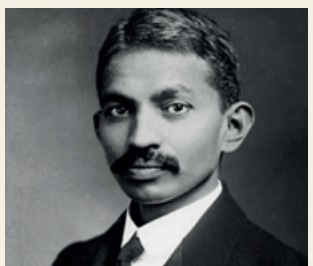
Mary Seacole
(1853-1881)
A great Nurse and writer



Fanny Eaton
(1835-1924)
Model of Art



Fela Kuti
(1938-1997)
World famous musician



Mathatma Ghandi
(1869-1948)
Peaceful protest leader



Marcus Garvey
(1887-1940)
Influential Pan Africanist leader

COMMUNITY CENTRES AND COMMUNITIES

Hammersmith & Fulham has a lot of places where you can pursue your interests, develop yourself, or just find something to do. We will be featuring one or two community centres and organisations here each month.

Nubian Life centre

Nubian Life is a second generation organisation, set up by Windrush pioneers residing in the London Borough of Hammersmith & Fulham. The charity has delivered culturally specific services to the African-Caribbean community for 39 years, from its inception as Hammersmith & Fulham Black Senior Citizens in 1983 to becoming Nubian Life; a registered company and charity on 19th July 1996.

