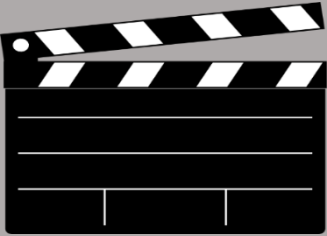

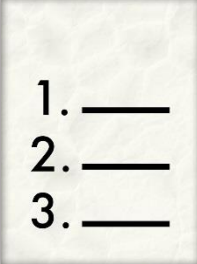


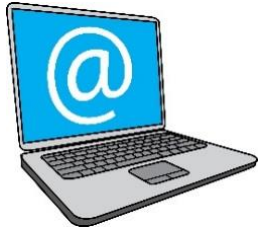


# **Hammersmith & Fulham Disabled People's Commission (DPC)**

**Action Tracker – July 2017**

<h2 style="text-align: center;">Actions</h2> 	<h2 style="text-align: center;">Who?</h2> 	<h2 style="text-align: center;">Notes</h2> 
 <p>Kevin to contact Anna Waterman with regards to the draft Social Isolation &amp; Loneliness Strategy.</p>	<p>Kevin Caulfield</p>	<p>Anna has moved to Adult Social Care commissioning.</p>
 <p>Kevin to fix a date and book venue for autumn public event.</p>	<p>Kevin Caulfield</p>	<p><b>ONGOING</b> – Peter Gay is looking at a venue for September date: either 19<sup>th</sup> or 21<sup>st</sup>, between 5pm – 8pm.</p>



Kevin to discuss with communications team the idea from Sarah that Steve Cowan does a video for the DPC.

Kevin Caulfield

**DONE** – Kevin has emailed Michael Russell in H&F Communications team.

**ONGOING** - Tara will follow up.



Focus group dates to be fixed for developing the housing strategy.

Labab Lubub

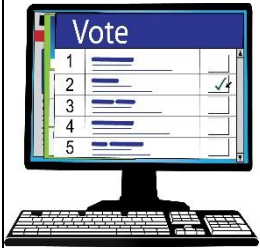
**ONGOING** – suggestion is for one on Monday 10<sup>th</sup> July and one on Friday 14<sup>th</sup> July. One group in the day and one from 6pm – 8pm. Labab has sent ideas for questions.



Kevin to share summary of the two surveys.

Kevin Caulfield

**DONE**



Kevin to post councillors' survey online once it is finished.

Kevin Caulfield

**DONE** – survey was online until 1<sup>st</sup> July.

**ONGOING** – Milan Ognjenovic is currently off sick. Tara or Kevin will catch up with him when he is back.





Kevin to organise H&F staff event on co-production.

Kevin Caulfield

Tara explained that because of the Grenfell fire, lots of council officers have been working to help survivors and local people.

It is postponed until September.

 <p>Kevin to share David's presentation.</p>	Kevin Caulfield	<b>DONE</b> – David shared it.
 <p>Kevin to share information about housing issues for Disabled people.</p>	Kevin Caulfield	Jane had sent research from Inclusion London to Tara and Mike.  Tara will share with other DPC members.