

2011 Census Quality Assurance Pack

Hammersmith and Fulham



Help tomorrow take shape

Introduction

This Quality Assurance Pack is part of the first release from the 2011 Census of population for England and Wales conducted by the Office for National Statistics (ONS). It provides a snapshot of the usually resident population as at Census Day, 27 March 2011 and various comparators used in the quality assurance process. This is a summary version of the information that was made available to the Quality Assurance Panel during quality assurance of the census estimates.

Information is provided on the usually resident population at national, regional, county and constituent Local Authority District and Unitary Authority level, by age and sex. The census population estimates are provided by five year age band below national level. Data contained within the pack are rounded to the nearest 100. There may be inconsistencies with comparator data published elsewhere because of rounding, disclosure control and processing to ensure consistency with census definitions.

This information pack is provided in accordance with the provisions of the Census Act 1920, and therefore only relates to the census in England and Wales

By selecting a local authority at the top of this page the pack provides an area specific summary of the material outlined on the contents page. Separate tables for all local authorities and regions also published as part of the first release. The tables can be downloaded from the same location as this pack:

<http://www.ons.gov.uk/ons/guide-method/census/2011/census-data/2011-census-data/2011-first-release/local-authority-quality-assurance/index.html>

Build version: 2.12 Publication Version: 1

2011 Census QA Pack - Hammersmith and Fulham

QA Pack Contents

Within the pack, there are a number of tab/pages

Front page - This contains explanatory text regarding the QA packs, a drop-down menu for selecting the desired region and local authority, and buttons for navigating and printing the QA pack

Explanatory materials - This contains links to a series of explanatory reports on methods and quality, published on the ONS website, which support the release of census population estimates. Also included is a brief guide to terms used in the QA pack.

Local Authority totals - This contains census counts and estimates of usual residents, households containing at least one usual resident and the number of occupied dwellings according to Communities and Local Government Council Tax data. These are displayed for the selected LA, its region, and England and Wales as a whole.

Age-sex population distributions - This contains tables and graphs displaying the census and comparator totals by five year age group and sex for the selected LA. A separate table and graph containing sex ratios for the selected LA is provided.

County and Region proportional comparisons - This contains comparisons of the proportionate distribution of census estimates by five year age, and sex, between the chosen LA, its county (where applicable) and region, as well as England and Wales as a whole.

Short-term residents - This contains short term UK resident totals by sex for the selected LA and regional totals by broad age and sex.

County age-sex population distribution - This contains a drop down menu allowing the selection of one of the 27 counties or 6 metropolitan counties in England. Tables and graphs displaying the census and comparator data by five year age group and sex, as well as sex ratios, are shown for the selected county. A separate table indicates which local authorities are contained within the selected county. The sheet can be printed separately to the rest of the QA pack using the embedded button.

Explanatory Materials

A series of methods and quality reports have been published on the ONS website to support the publication of census population estimates

Papers made available for first release:

[Quality Assurance of Census Population Estimates](#)

[Census Coverage Survey Summary](#)

[The 2011 Census Coverage Assessment and Adjustment process](#)

[Coverage within Communal Establishments](#)

[Household Bias Adjustment](#)

[Tuning the Coverage Estimation Process](#)

[Overcount Estimation and Adjustment](#)

[Quality and Methodology Information paper on the census estimates](#)

[Response Rates in the 2011 Census](#)

[Confidence Intervals for the 2011 Census](#)

[CCS Sample Balance Adjustment](#)

[Making a National Adjustment for Residual Biases](#)

All available from: <http://www.ons.gov.uk/ons/guide-method/census/2011/census-data/2011-census-data/2011-first-release/first-release--quality-assurance-and-methodology-papers/index.html>

Papers made available prior to first release:

[Overview of Administrative Comparator Data used in 2011 Census Quality Assurance](#)

[Methodology for Quality Assuring the Census Population Estimates](#)

Descriptive Metadata - Short Guide to Terms Used -

(please see the more comprehensive glossary and supporting papers on the ONS website. The definitions provided here are not comprehensive and users are encouraged to become familiar with the terms used in this QA pack to aid interpretation)

Census count

The number of usual residents for whom individual details were provided on a returned questionnaire.

Census estimate of usual residents

The census estimate of usual residents, by age group and sex.

Census estimate of households

The census estimate of household spaces occupied by at least one usual resident

Confidence interval (95 per cent)

A 95 per cent confidence interval is a range within which the true population would fall 95 times if the sample survey was repeated 100 times. It is a standard way of expressing the statistical accuracy of a survey based estimate.

Rolled forward population estimates

These are the population estimates which have been rolled forward from 2001 to mid-2010, including recent improvements to migration statistics, and then extrapolated from June 2010 to March 2011. These estimates were used in the quality assurance of census local authority population estimates. It was necessary to extrapolate because the components of population change used to create the annual estimates only became available much more recently. Rolled-forward population estimates based on the actual (recently available) components of change up to March 2011 are only marginally higher (52,000) at England & Wales level than those used in the quality assurance process.

Patient Register 2011

The count of people registered with a GP, extracted from the May 2011 NHS patient register data.

School Census 2011

Children in state/maintained schools by age and sex. The data refer to January 2011. Only age groups 5-9 and 10-14 are included as only these groups are fully covered by the School Census.

Social Security and Revenue information

Includes people who have claimed child benefits, pensions or interacted with the Department for Work and Pensions. This may therefore exclude certain groups who are not eligible for benefits. The data for 65+ will include people claiming a state pension that live abroad. The data refers to census day.

Comparator Bounds

The Lower and Upper bounds are based on a diagnostic range calculated using a set method, please see the Methodology for Quality Assuring the Census Population Estimates paper

Census person response rate

The number of usual residents who responded to the census divided by the census estimate of usual residents.

Usual resident

Anyone who, on 27 March 2011, was in the UK and had stayed or intended to stay in the UK for a period of 12 months or more, or had a permanent UK address and was outside the UK and intended to be outside the UK for less than 12 months.

Short-term UK residents

Anyone born outside the UK who has stayed or intends to stay in the UK for a period of three months or more but less than twelve months.

CLG/StatsWales Council Tax Data

Communities and Local Government Local Authority council taxbase 2011 England.
StatsWales council tax dwellings and exempt dwellings by local authority 2010-2011

2011 Census QA Pack - Hammersmith and Fulham

Census estimate of usual residents

	Hammersmith and Fulham	London	England & Wales
Census count of usual residents	159,500	7,391,800	52,638,800
Census estimate of usual residents	182,500	8,173,900	56,075,900

Source: Office for National Statistics

Census estimate of households

	Hammersmith and Fulham	London	England & Wales
Household spaces occupied by at least one usual resident	80,600	3,266,200	23,366,000
CLG/StatsWales council tax	78,400	3,258,400	23,370,200

Source: Office for National Statistics, Communities and Local Government, StatsWales

Components of the census estimate of usual residents

	Hammersmith and Fulham	London	England & Wales
Census Estimate for	182,500	8,173,900	56,075,900
of which:			
Count of usual residents	159,500	7,391,900	52,638,800
Change due to estimation and sample bias	15,000	604,700	2,804,800
Change due to overcount adjustment	-1,700	-68,400	-352,000
Change due to bias adjustment	5,300	133,800	583,000
Change due to national adjustment	4,100	97,500	303,400
Change due to CE adjustment	300	14,300	97,900

Source: Office for National Statistics

For information on the components of the census estimate please see the Explanatory Materials on the previous page

2011 Census QA Pack - Hammersmith and Fulham

Age-sex population distributions for all persons, males and females with sex ratios

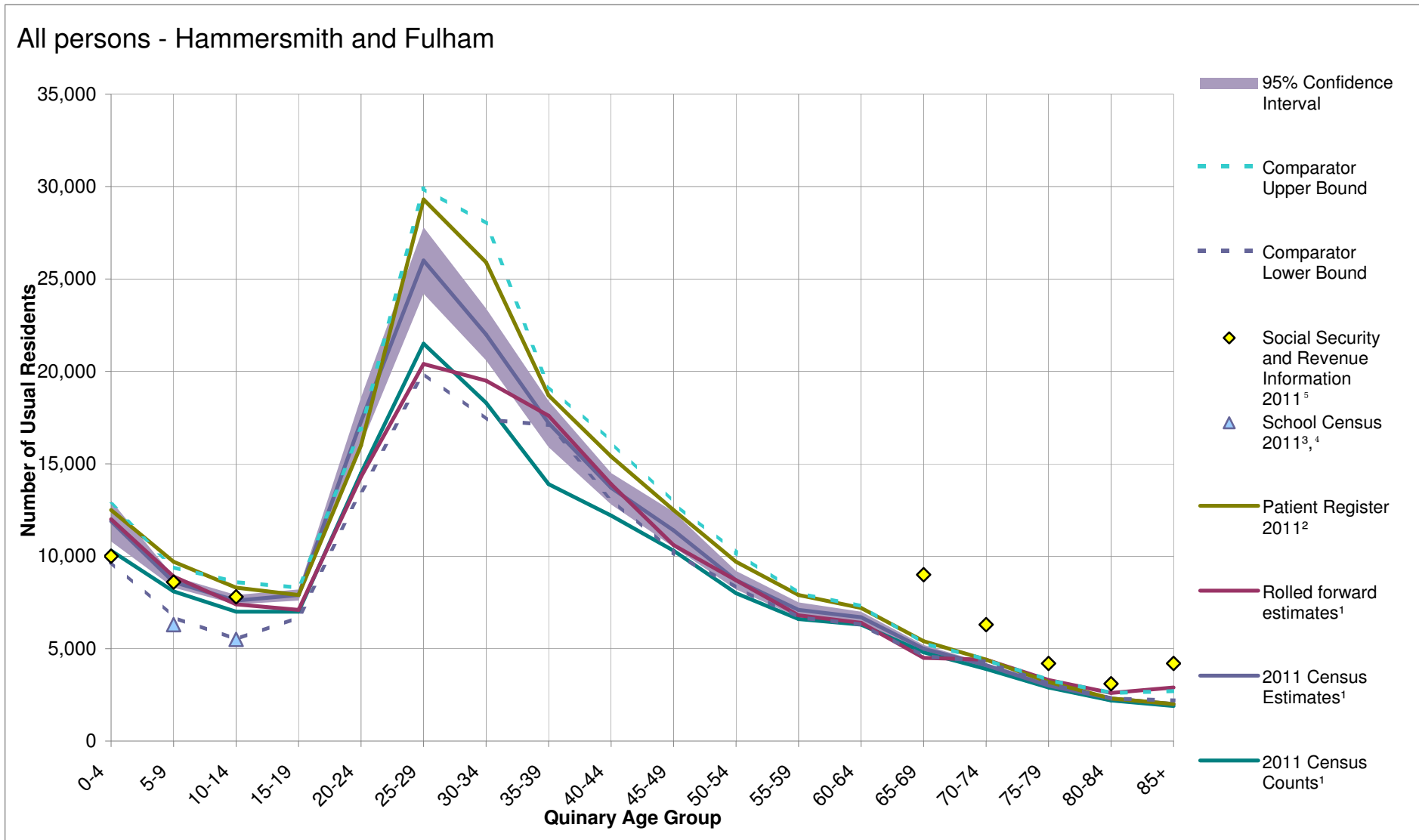
All persons - Hammersmith and Fulham

Age	2011 Census Counts ¹	2011 Census Estimates ¹	Lower 95% Confidence Interval	Upper 95% Confidence Interval	Rolled forward estimates ¹	Patient Register 2011 ²	School Census 2011 ^{3,4}	Social Security and Revenue Information 2011 ⁵	Comparator Lower Bound	Comparator Upper Bound	Response Rates
0-4	10,300	11,900	10,800	13,000	12,000	12,500		10,000	9,700	12,800	87%
5-9	8,100	8,600	8,300	8,900	8,900	9,700	6,300	8,600	6,700	9,400	94%
10-14	7,000	7,600	7,400	7,900	7,400	8,300	5,500	7,800	5,500	8,600	92%
15-19	7,000	7,900	7,600	8,200	7,100	7,900			6,700	8,300	88%
20-24	14,500	17,300	16,000	18,600	14,300	16,000			13,500	16,900	84%
25-29	21,500	26,000	24,200	27,800	20,400	29,300			19,900	29,900	83%
30-34	18,300	22,000	20,600	23,400	19,500	25,900			17,400	28,000	83%
35-39	13,900	17,200	15,900	18,400	17,600	18,700			17,100	19,200	81%
40-44	12,200	13,700	12,800	14,500	13,900	15,400			13,100	16,200	89%
45-49	10,300	11,400	10,500	12,400	10,600	12,500			10,200	12,900	90%
50-54	8,000	8,700	8,200	9,200	8,700	9,700			8,300	10,200	92%
55-59	6,600	7,100	6,700	7,500	6,800	7,900			6,700	8,000	92%
60-64	6,300	6,700	6,400	7,000	6,400	7,200			6,300	7,300	95%
65-69	4,800	5,000	4,800	5,200	4,500	5,400		9,000	4,600	5,300	95%
70-74	3,900	4,100	3,900	4,200	4,400	4,400		6,300	4,300	4,400	95%
75-79	2,900	3,000	2,900	3,200	3,300	3,200		4,200	3,100	3,300	96%
80-84	2,200	2,300	2,100	2,400	2,600	2,300		3,100	2,300	2,600	95%
85+	1,900	2,000	1,900	2,100	2,900	2,000		4,200	2,200	2,700	96%
Total	159,500	182,500	176,200	188,800	171,000	198,500	11,900	53,200			87%

Source: Office for National Statistics¹, National Health Service Information Centre², Department for Education³, Welsh Government⁴,

Department for Work and Pensions/Her Majesty's Revenue and Customs⁵

Descriptive metadata for tables in this pack is provided on previous pages - Descriptive metadata for terms used -



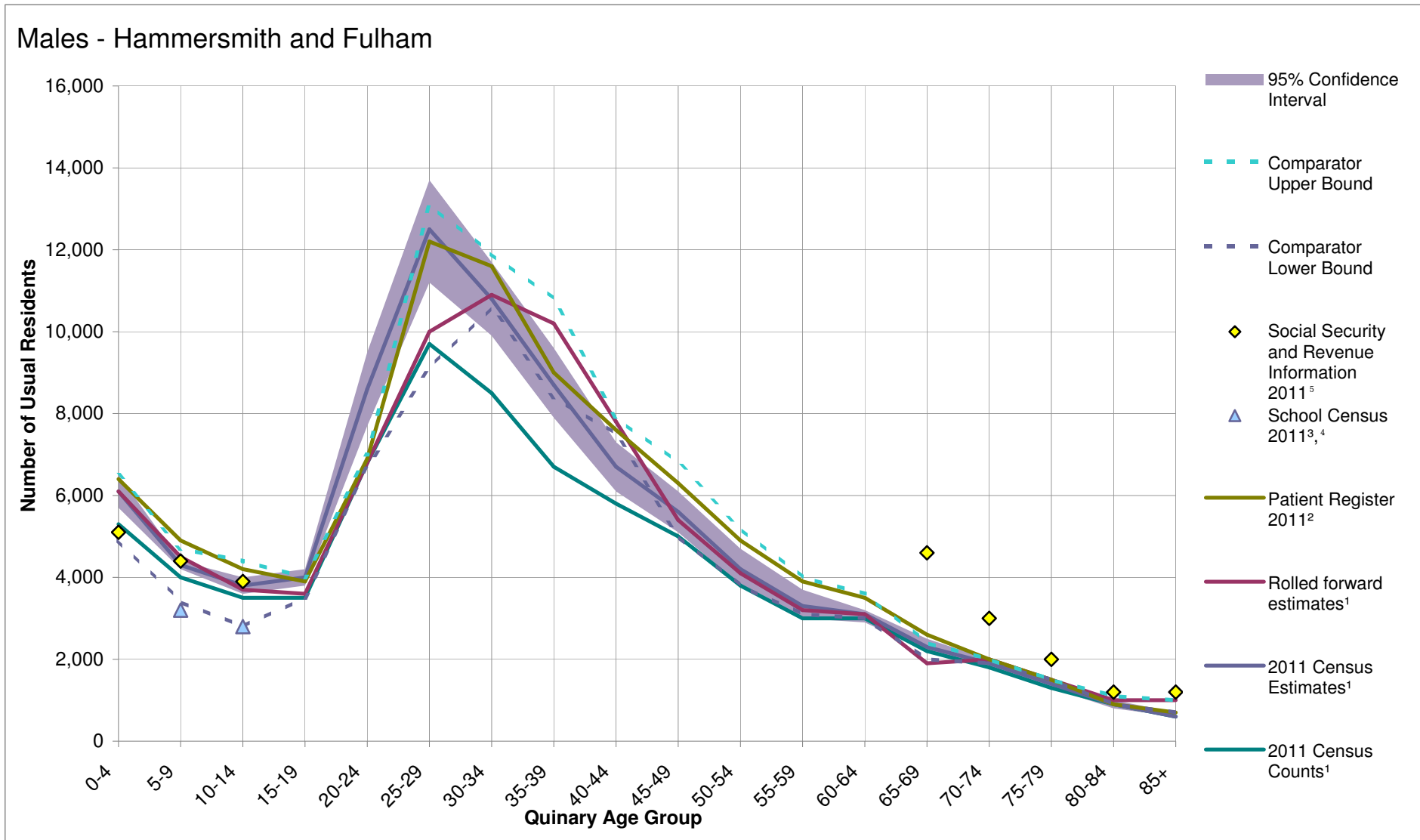
2011 Census QA Pack - Hammersmith and Fulham

Males - Hammersmith and Fulham

Age	2011 Census Counts ¹	2011 Census Estimates ¹	Lower 95% Confidence Interval	Upper 95% Confidence Interval	Rolled forward estimates ¹	Patient Register 2011 ²	School Census 2011 ^{3,4}	Social Security and Revenue Information 2011 ⁵	Comparator Lower Bound	Comparator Upper Bound	Response Rates
0-4	5,300	6,100	5,700	6,500	6,100	6,400		5,100	4,900	6,500	87%
5-9	4,000	4,300	4,200	4,400	4,500	4,900	3,200	4,400	3,400	4,700	94%
10-14	3,500	3,800	3,600	4,000	3,700	4,200	2,800	3,900	2,800	4,400	93%
15-19	3,500	4,000	3,800	4,200	3,600	3,900			3,500	4,000	87%
20-24	6,800	8,600	7,700	9,500	6,800	6,900			6,700	7,000	79%
25-29	9,700	12,500	11,200	13,700	10,000	12,200			9,100	13,100	77%
30-34	8,500	10,800	9,900	11,700	10,900	11,600			10,600	11,900	78%
35-39	6,700	8,700	7,900	9,600	10,200	9,000			8,400	10,800	77%
40-44	5,800	6,700	6,100	7,300	7,800	7,600			7,500	7,900	87%
45-49	5,000	5,600	5,100	6,100	5,400	6,300			5,000	6,800	89%
50-54	3,800	4,200	3,800	4,700	4,100	4,900			3,800	5,200	89%
55-59	3,000	3,300	3,000	3,700	3,200	3,900			3,100	4,000	92%
60-64	3,000	3,100	2,900	3,200	3,100	3,500			3,000	3,600	97%
65-69	2,200	2,300	2,200	2,500	1,900	2,600		4,600	2,000	2,400	94%
70-74	1,800	1,900	1,800	2,000	2,000	2,000		3,000	1,900	2,000	94%
75-79	1,300	1,400	1,300	1,500	1,500	1,500		2,000	1,500	1,500	97%
80-84	900	900	800	1,000	1,000	900		1,200	900	1,100	96%
85+	600	600	600	700	1,000	700		1,200	700	1,000	96%
Total	75,400	88,900	85,300	92,500	86,700	93,000	6,000	25,400			85%

Source: Office for National Statistics¹, National Health Service Information Centre², Department for Education³, Welsh Government⁴, Department for Work and Pensions/Her Majesty's Revenue and Customs⁵

Descriptive metadata for tables in this pack is provided on previous pages - Descriptive metadata for terms used -



2011 Census QA Pack - Hammersmith and Fulham

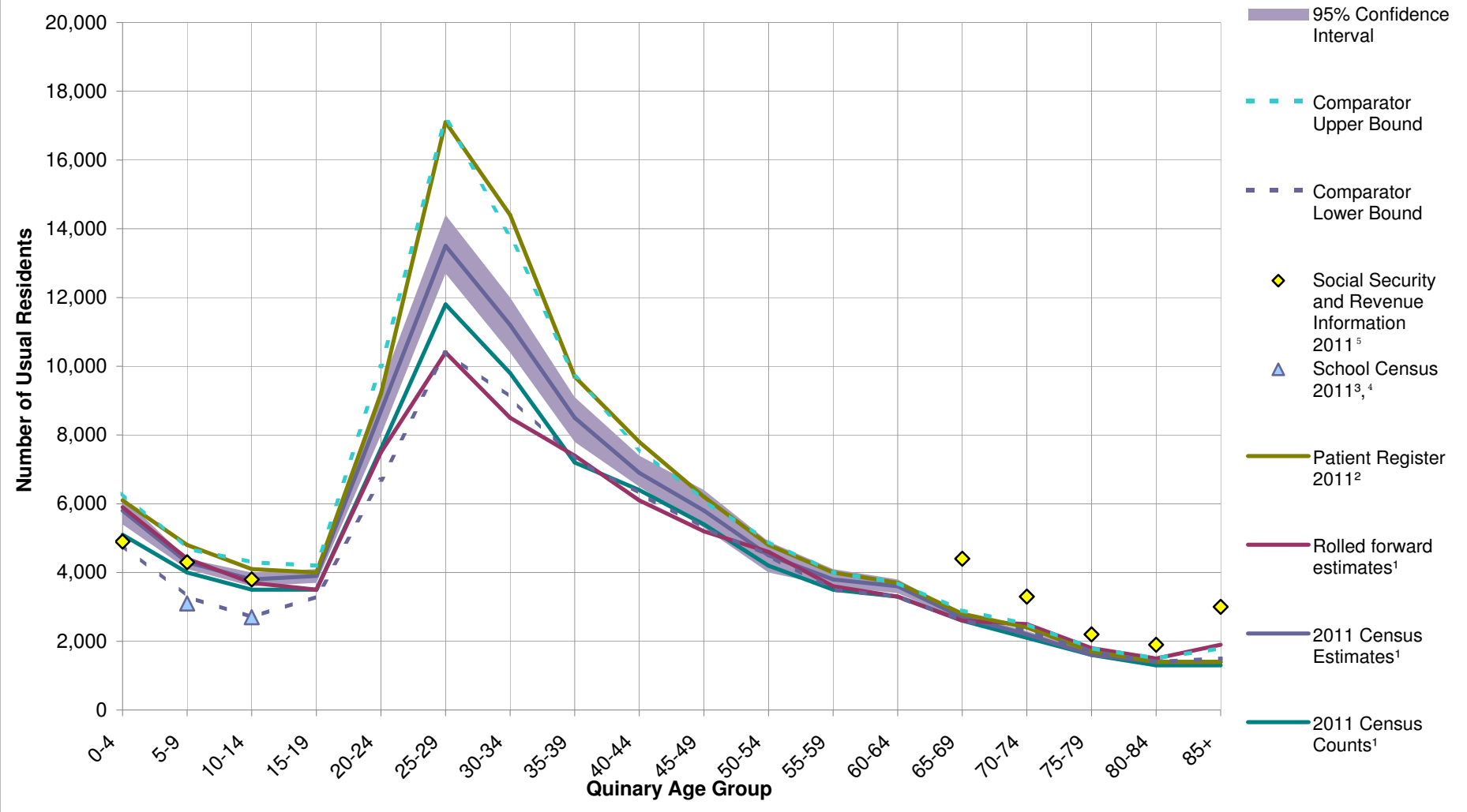
Females - Hammersmith and Fulham

Age	2011 Census Counts ¹	2011 Census Estimates ¹	Lower 95% Confidence Interval	Upper 95% Confidence Interval	Rolled forward estimates ¹	Patient Register 2011 ²	School Census 2011 ^{3,4}	Social Security and Revenue Information 2011 ⁵	Comparator Lower Bound	Comparator Upper Bound	Response Rates
0-4	5,100	5,800	5,400	6,200	5,900	6,100		4,900	4,800	6,300	87%
5-9	4,000	4,300	4,100	4,400	4,400	4,800	3,100	4,300	3,300	4,700	94%
10-14	3,500	3,800	3,600	4,000	3,700	4,100	2,700	3,800	2,700	4,300	91%
15-19	3,500	3,900	3,700	4,100	3,500	4,000			3,300	4,200	89%
20-24	7,600	8,700	8,000	9,400	7,500	9,200			6,700	10,000	88%
25-29	11,800	13,500	12,700	14,400	10,400	17,100			10,400	17,200	87%
30-34	9,800	11,200	10,400	12,000	8,500	14,400			9,100	13,800	88%
35-39	7,200	8,500	7,800	9,100	7,400	9,700			7,300	9,700	85%
40-44	6,400	6,900	6,500	7,400	6,100	7,800			6,300	7,600	92%
45-49	5,400	5,800	5,300	6,400	5,200	6,200			5,300	6,100	92%
50-54	4,200	4,500	4,000	4,900	4,600	4,800			4,500	4,900	95%
55-59	3,500	3,800	3,600	4,100	3,600	4,000			3,500	4,000	92%
60-64	3,300	3,600	3,400	3,800	3,300	3,700			3,300	3,700	92%
65-69	2,600	2,700	2,600	2,800	2,600	2,800		4,400	2,600	2,900	96%
70-74	2,100	2,200	2,100	2,300	2,500	2,400		3,300	2,300	2,500	96%
75-79	1,600	1,600	1,600	1,700	1,800	1,700		2,200	1,700	1,800	96%
80-84	1,300	1,400	1,300	1,400	1,500	1,400		1,900	1,400	1,500	95%
85+	1,300	1,400	1,300	1,400	1,900	1,400		3,000	1,500	1,800	95%
Total	84,200	93,600	90,700	96,500	84,300	105,600	5,800	27,800			90%

Source: Office for National Statistics¹, National Health Service Information Centre², Department for Education³, Welsh Government⁴, Department for Work and Pensions/Her Majesty's Revenue and Customs⁵

Descriptive metadata for tables in this pack is provided on previous pages - Descriptive metadata for terms used -

Females - Hammersmith and Fulham



2011 Census QA Pack - Hammersmith and Fulham

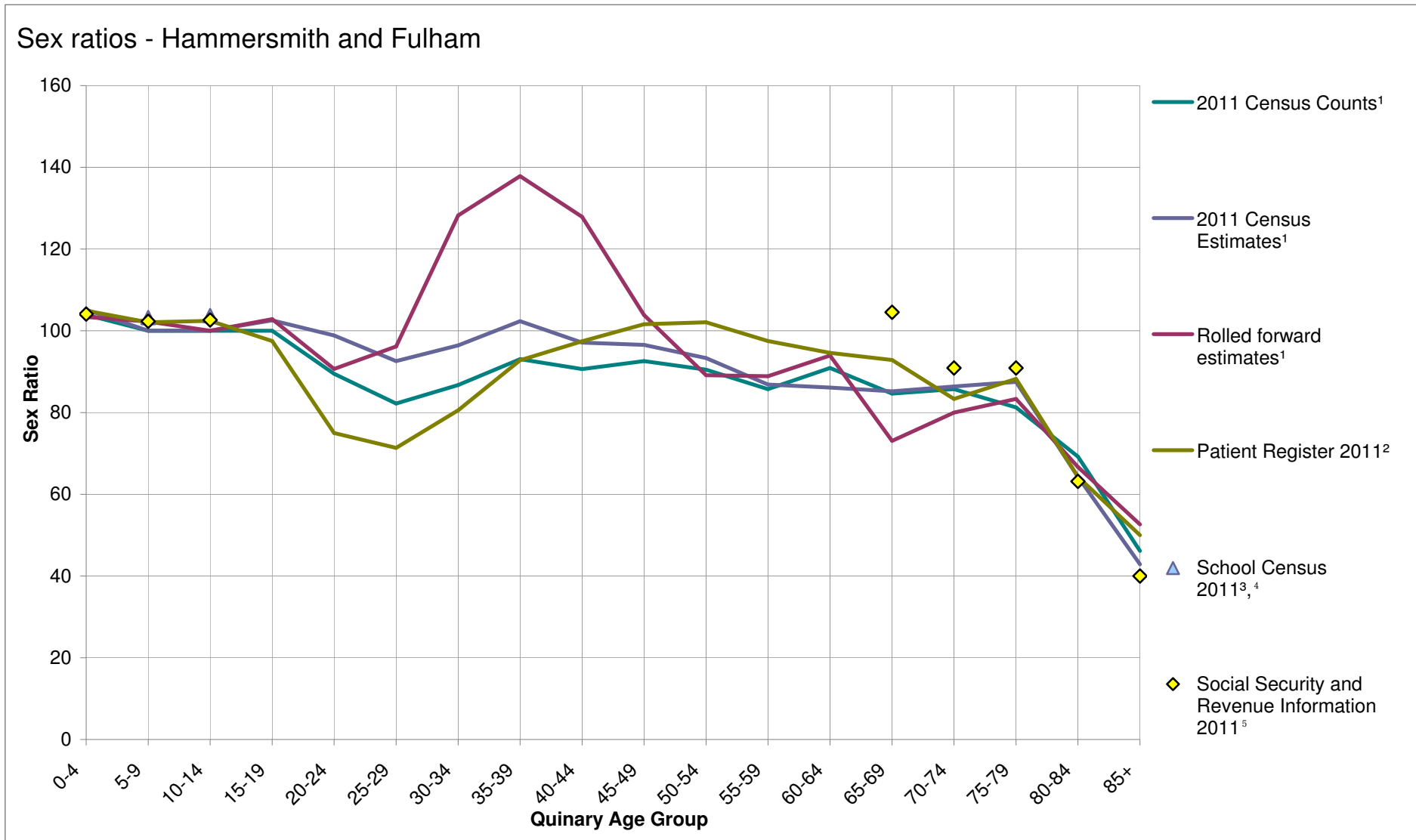
Sex ratios - Hammersmith and Fulham

Defined as the number of males per 100 females

Age	2011 Census Counts ¹	2011 Census Estimates ¹	Rolled forward estimates ¹	Patient Register 2011 ²	School Census 2011 ^{3,4}	Social Security and Revenue Information 2011 ⁵
0-4	104	105	103	105		104
5-9	100	100	102	102	103	102
10-14	100	100	100	102	104	103
15-19	100	103	103	98		
20-24	89	99	91	75		
25-29	82	93	96	71		
30-34	87	96	128	81		
35-39	93	102	138	93		
40-44	91	97	128	97		
45-49	93	97	104	102		
50-54	90	93	89	102		
55-59	86	87	89	98		
60-64	91	86	94	95		
65-69	85	85	73	93		105
70-74	86	86	80	83		91
75-79	81	88	83	88		91
80-84	69	64	67	64		63
85+	46	43	53	50		40

Source: Office for National Statistics¹, National Health Service Information Centre², Department for Education³, Welsh Government⁴, Department for Work and Pensions/Her Majesty's Revenue and Customs⁵

Descriptive metadata for tables in this pack is provided on previous pages - Descriptive metadata for terms used -



2011 Census QA Pack - Hammersmith and Fulham

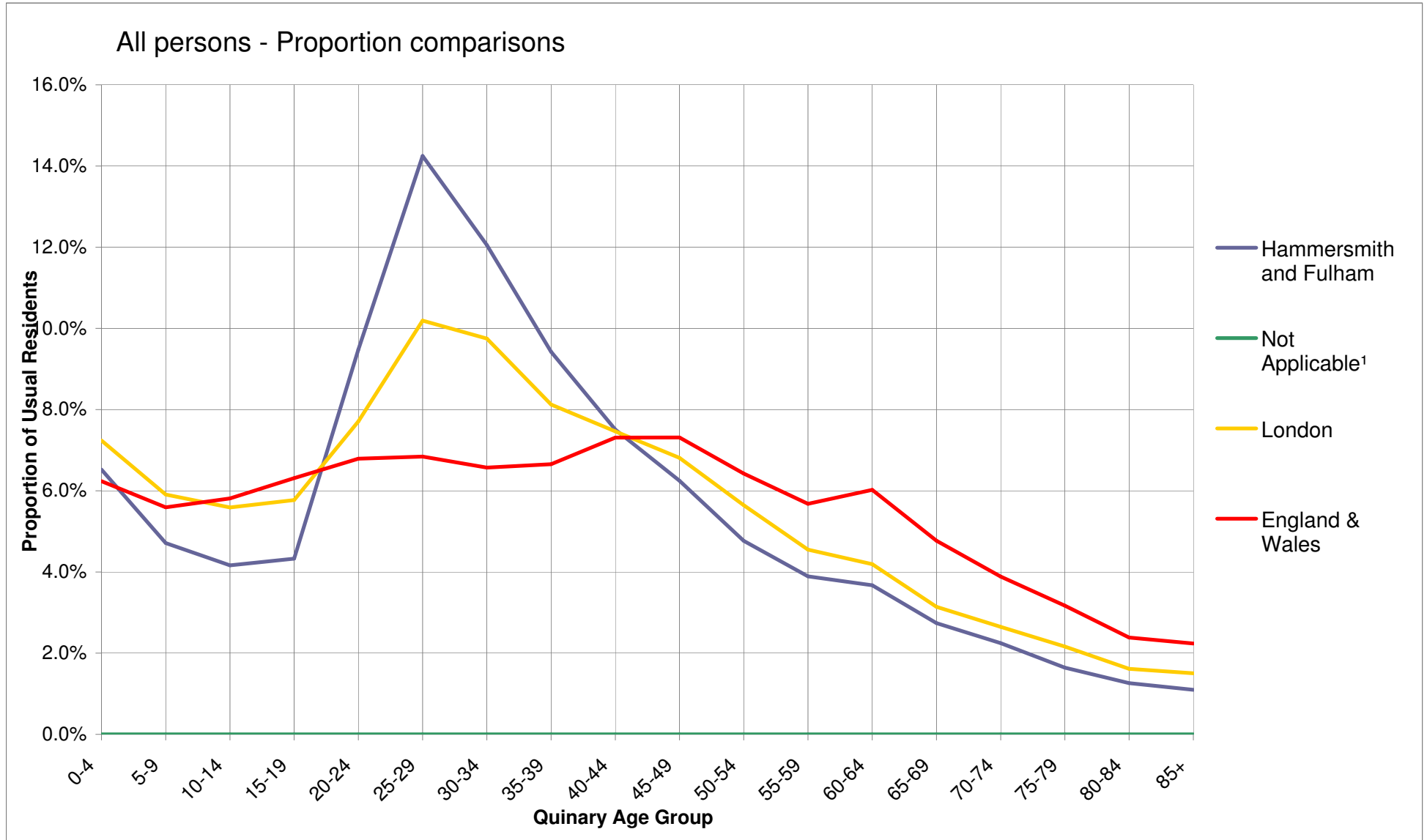
Age-sex population proportions for LA, county (where applicable), Region and England and Wales

All persons - Proportion comparisons

Age	Hammersmith and Fulham	Not Applicable ¹	London	England & Wales
0-4	6.5%		7.2%	6.2%
5-9	4.7%		5.9%	5.6%
10-14	4.2%		5.6%	5.8%
15-19	4.3%		5.8%	6.3%
20-24	9.5%		7.7%	6.8%
25-29	14.2%		10.2%	6.8%
30-34	12.1%		9.7%	6.6%
35-39	9.4%		8.1%	6.7%
40-44	7.5%		7.5%	7.3%
45-49	6.2%		6.8%	7.3%
50-54	4.8%		5.6%	6.4%
55-59	3.9%		4.5%	5.7%
60-64	3.7%		4.2%	6.0%
65-69	2.7%		3.1%	4.8%
70-74	2.2%		2.6%	3.9%
75-79	1.6%		2.2%	3.2%
80-84	1.3%		1.6%	2.4%
85+	1.1%		1.5%	2.2%
Total	182,500		8,173,900	56,075,900

Source: Office for National Statistics

¹ "Not Applicable" displayed when selected Local Authority is not part of an administrative county



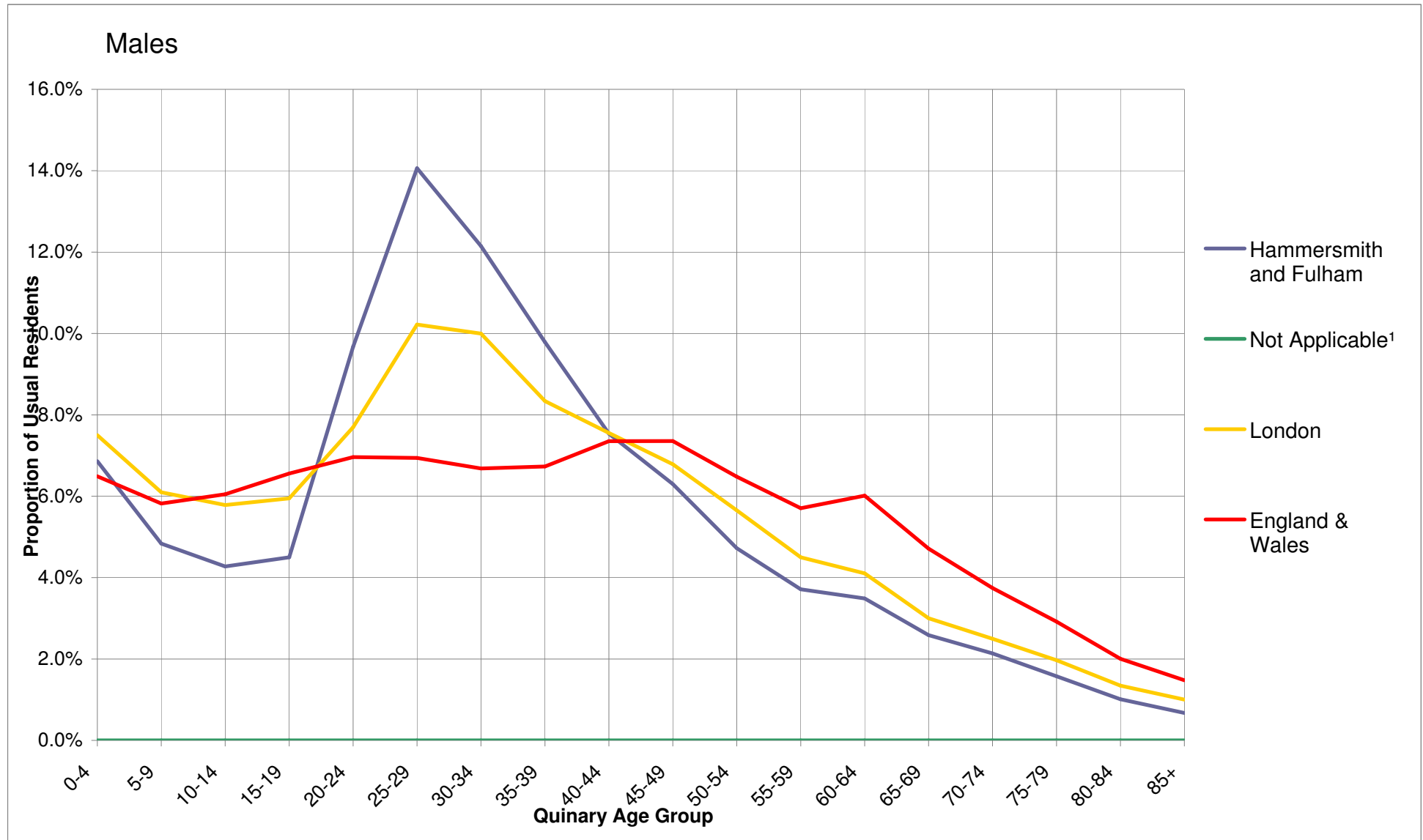
2011 Census QA Pack - Hammersmith and Fulham

Males - Proportion comparisons

Age	Hammersmith and Fulham	Not Applicable ¹	London	England & Wales
0-4	6.9%		7.5%	6.5%
5-9	4.8%		6.1%	5.8%
10-14	4.3%		5.8%	6.1%
15-19	4.5%		5.9%	6.6%
20-24	9.7%		7.7%	7.0%
25-29	14.1%		10.2%	6.9%
30-34	12.1%		10.0%	6.7%
35-39	9.8%		8.3%	6.7%
40-44	7.5%		7.6%	7.4%
45-49	6.3%		6.8%	7.4%
50-54	4.7%		5.7%	6.5%
55-59	3.7%		4.5%	5.7%
60-64	3.5%		4.1%	6.0%
65-69	2.6%		3.0%	4.7%
70-74	2.1%		2.5%	3.7%
75-79	1.6%		2.0%	2.9%
80-84	1.0%		1.3%	2.0%
85+	0.7%		1.0%	1.5%
Total	88,900		4,033,300	27,573,400

Source: Office for National Statistics

¹ "Not Applicable" displayed when selected Local Authority is not part of an administrative county



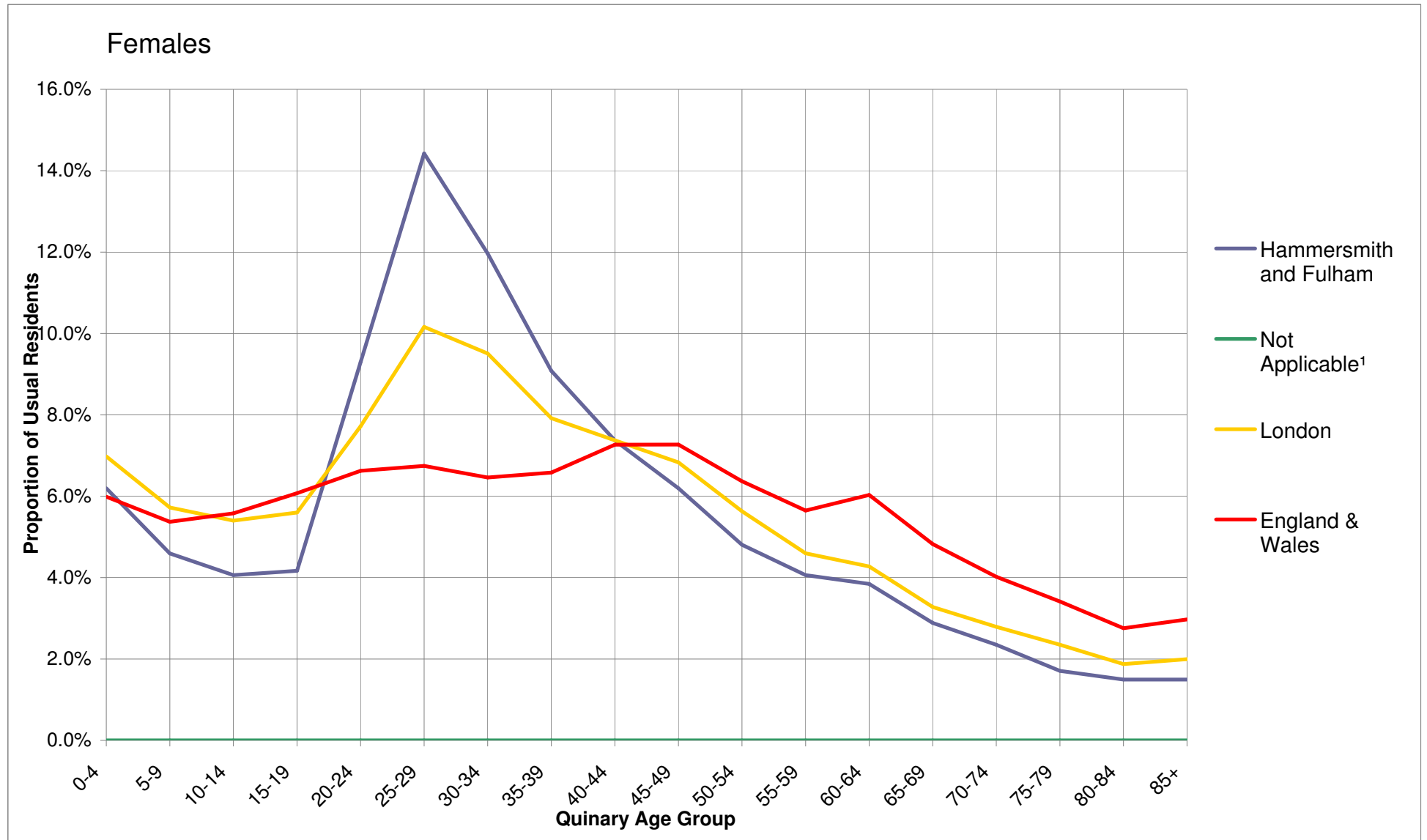
2011 Census QA Pack - Hammersmith and Fulham

Females - Proportion comparisons

Age	Hammersmith and Fulham	Not Applicable ¹	London	England & Wales
0-4	6.2%		7.0%	6.0%
5-9	4.6%		5.7%	5.4%
10-14	4.1%		5.4%	5.6%
15-19	4.2%		5.6%	6.1%
20-24	9.3%		7.7%	6.6%
25-29	14.4%		10.2%	6.7%
30-34	12.0%		9.5%	6.5%
35-39	9.1%		7.9%	6.6%
40-44	7.4%		7.4%	7.3%
45-49	6.2%		6.8%	7.3%
50-54	4.8%		5.6%	6.4%
55-59	4.1%		4.6%	5.6%
60-64	3.8%		4.3%	6.0%
65-69	2.9%		3.3%	4.8%
70-74	2.4%		2.8%	4.0%
75-79	1.7%		2.3%	3.4%
80-84	1.5%		1.9%	2.8%
85+	1.5%		2.0%	3.0%
Total	93,600		4,140,700	28,502,500

Source: Office for National Statistics

¹ "Not Applicable" displayed when selected Local Authority is not part of an administrative county



2011 Census QA Pack - Hammersmith and Fulham

Short-term UK residents - Hammersmith and Fulham

All Persons	2,200
Males	1,000
Females	1,200

Source: Office for National Statistics

Regional totals of short-term UK residents by sex and broad age

Age	North East	North West	Yorkshire and The Humber	East Midlands	West Midlands	East of England	London	South East	South West	Wales	England & Wales
All Persons											
0-14	300	1,000	1,000	600	900	1,200	3,700	2,200	1,000	500	12,500
15-24	4,100	8,600	7,900	6,300	8,200	7,300	28,900	13,500	6,100	3,800	94,600
25-44	1,900	5,200	4,300	3,500	5,100	5,600	28,300	9,600	3,500	2,400	69,500
45-64	200	800	600	600	800	1,200	5,600	2,000	700	400	12,900
65+	100	300	200	200	300	500	2,500	1,200	200	100	5,600
Males											
0-14	200	500	500	300	500	600	1,800	1,100	500	300	6,400
15-24	2,100	4,200	3,600	2,800	4,100	3,500	13,000	5,700	2,600	2,000	43,600
25-44	1,200	3,200	2,400	2,000	3,000	3,200	15,600	5,100	1,900	1,500	39,200
45-64	100	300	200	300	300	400	2,400	800	200	100	5,200
65+	0	100	100	100	100	200	1,100	400	100	0	2,300
Females											
0-14	200	500	500	300	400	600	1,800	1,100	500	200	6,100
15-24	2,000	4,400	4,400	3,400	4,100	3,800	15,900	7,800	3,400	1,800	51,000
25-44	700	2,000	1,900	1,500	2,100	2,400	12,700	4,400	1,600	900	30,300
45-64	100	500	400	400	400	800	3,200	1,300	400	200	7,700
65+	100	200	100	100	200	300	1,400	700	100	100	3,300

Source: Office for National Statistics

Please note that numbers may not add up to displayed totals due to rounding