

Annex 2

Special licensing policy for Fulham Area

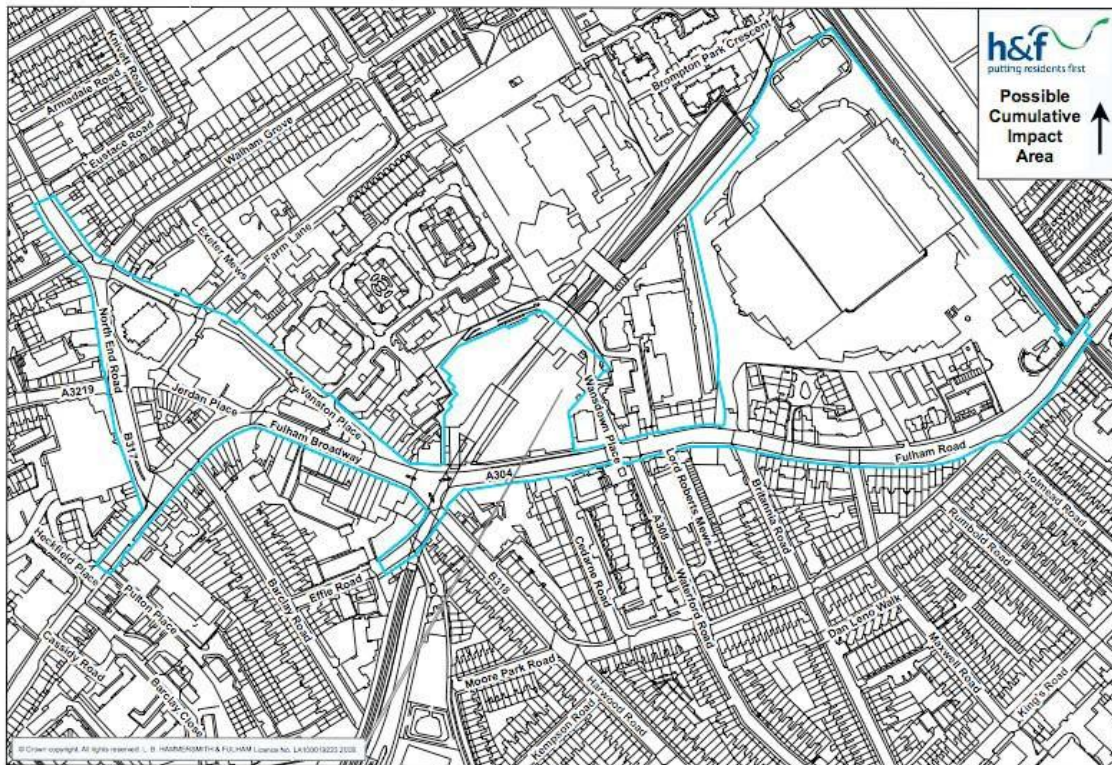
1 The Council has decided to introduce a special policy relating to cumulative impact as provided by the Secretary of State in the Guidance issued under section 182 of the Licensing Act 2003 (paragraphs 13.24 to 13.39) and the Council's own Statement of Licensing policy dated November 2007 at paragraph 4.3 to the Fulham Town Centre Area (being the shaded area and all premises which have a principal form of access onto the shaded area as shown on the plan.

2 "Cumulative impact" means the potential impact on the promotion of the Licensing Objectives of a significant number of licensed premises concentrated in one area.

3 The Fulham Town Centre Area has been identified as being adversely affected in terms of the Licensing Objectives because of the cumulative impact of the concentration of drink led premises. There is evidence that the cumulative impact includes serious problems of crime, disorder and public nuisance. Having regard to the evidence, the Licensing Authority has been satisfied that it is appropriate and necessary to include an approach to cumulative impact. The evidence for this special policy may be viewed on request at the Council Offices.

4 Applications for new premises licences, club premises certificates or any variations within the Fulham Town Centre Area that are likely to add to the existing cumulative impact will normally be refused where a relevant representation has been made, unless the applicant can demonstrate that there will be no negative cumulative impact on one or more of the Licensing Objectives. Accordingly, the presumption of refusal in this policy is not absolute and the circumstances of each application will be considered where a relevant representation has been made.

5 The presumption of refusal does not relieve responsible authorities or other persons of the need to make a relevant representation. Applicants will need to address the special policy issues in their operating schedules. If there are no representations the Licensing Authority must grant the application in terms consistent with the operating schedule submitted.



6. The cumulative impact policy will be kept under review by the Licensing Authority.

7. The geographical boundary of the proposed area

Figure 1. Cumulative Impact Area (CIP).

ANNEX 3

Fulham Town Centre – Commulative Impact Zone Data Report 2015

Fulham Town Centre - Commulative Impact Zone

Ambulance Data

Introduction

Ambulance data is available from the London Analyst Support Site (LASS) down to Census output area. Within the full dataset, the information can be filtered for 'Alcohol Related' and 'Assaults'.

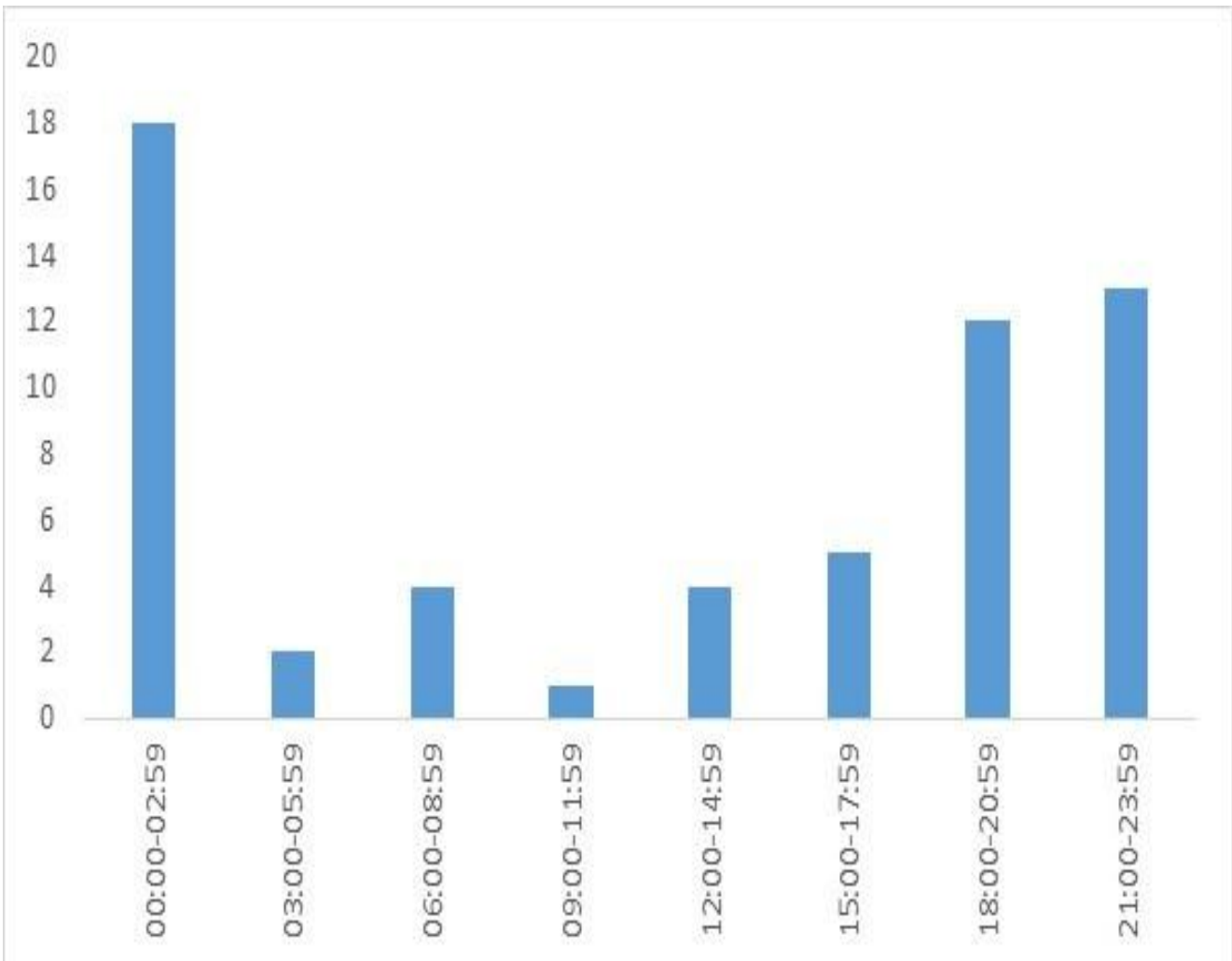
Please note that Census output areas do not exactly match the Fulham Town Centre boundaries so centroids have been used to approximate the number of incidents that occur within the area.

Alcohol Related Incidents – Overview

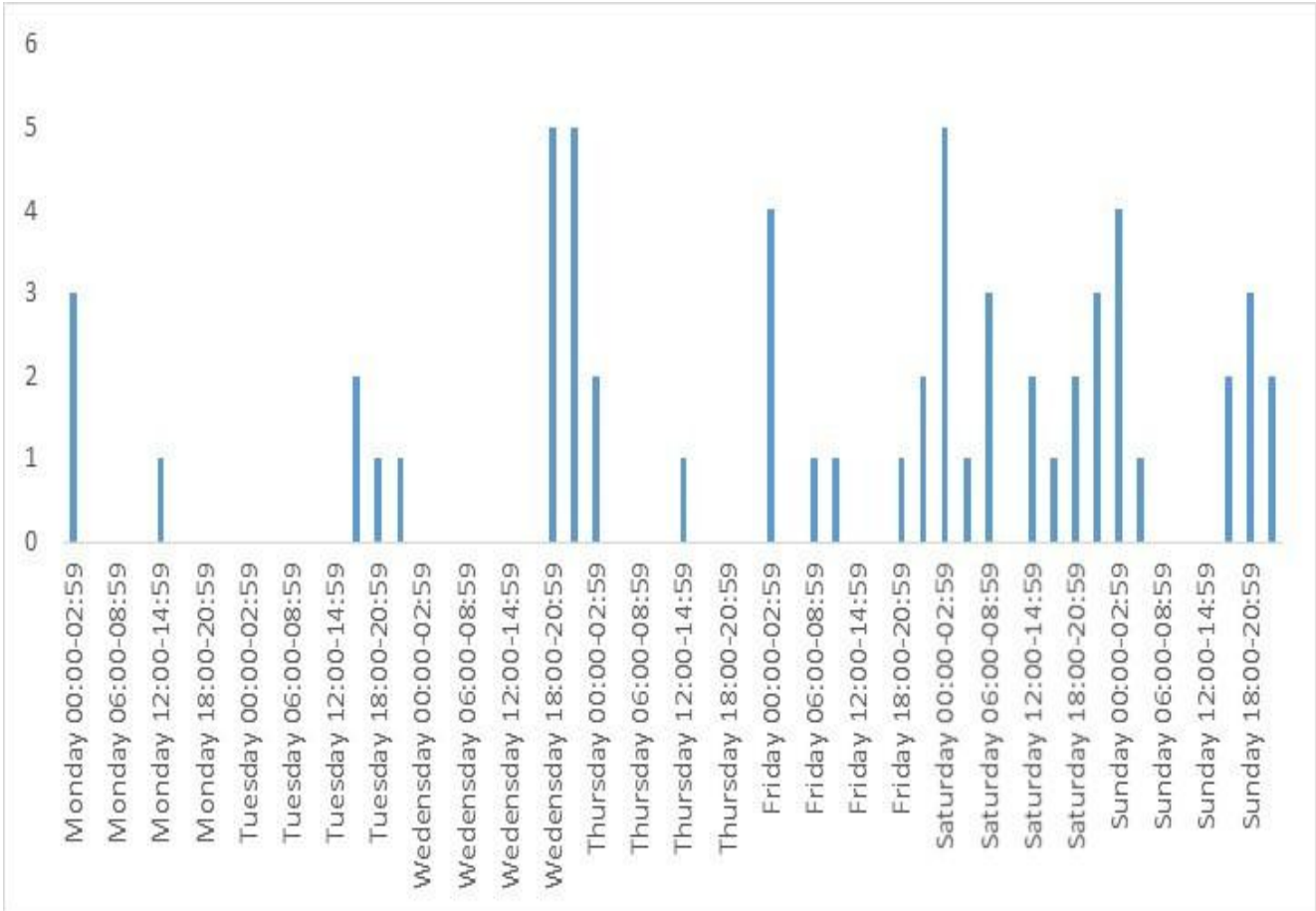
There were a total of 1741 alcohol related incidents that occurred in LBHF in 2014. Of these 59 (3.4%) incidents occurred in the Fulham Town Centre Area.

Temporal Analysis

Looking specifically at the FTC area, the time period 00:00-02:59 has the peak number of alcohol related incidents reported to the Ambulance Service.



Incorporating the days into this analysis we are able to conclude that the peak times for alcohol related incidents are Saturday 00:00-00:59, Wednesday 18:00-20:59 and Wednesday 21:00-23:59.

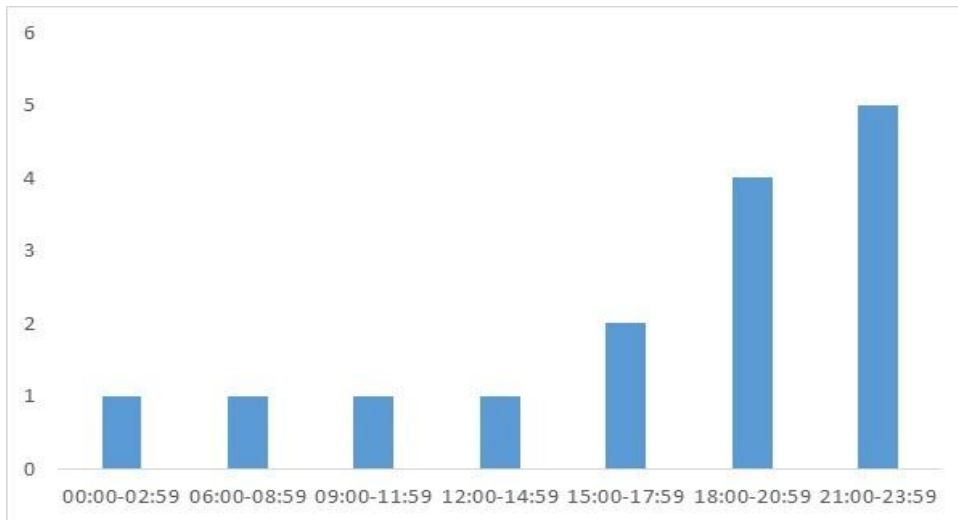


Assault Related Incidents – Overview

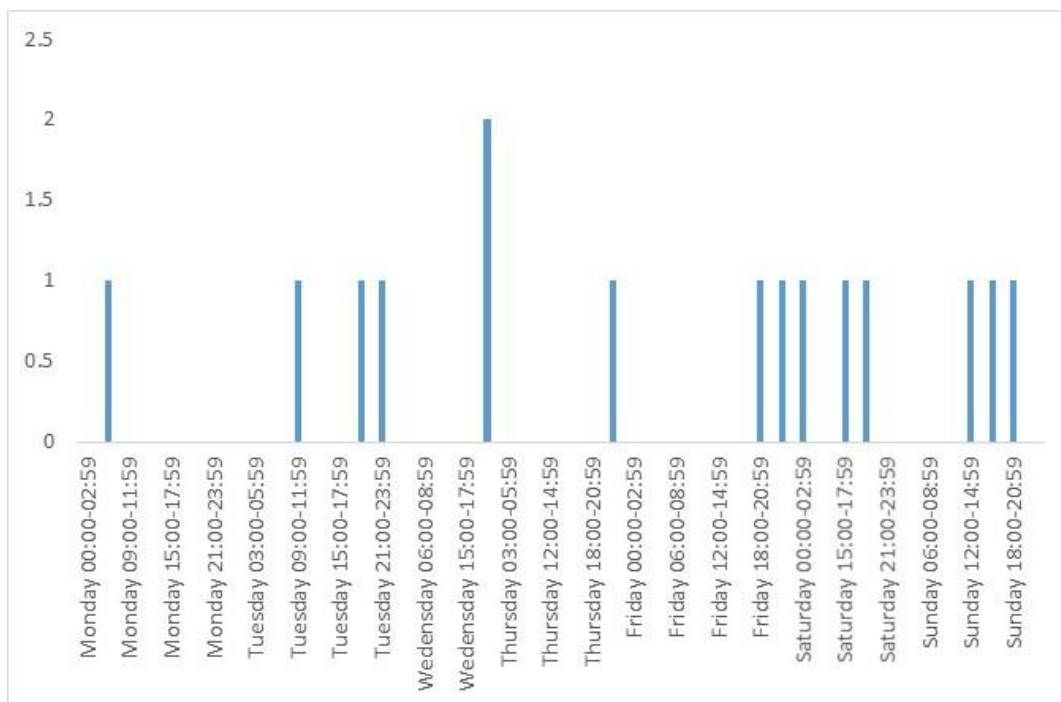
There were a total of 650 assault related incidents that occurred in LBHF in 2014. Of these 15 (2.3%) incidents occurred in the Fulham Town Centre Area.

Temporal Analysis

Looking specifically at the FTC area, the peak hours for assault related accidents reported to the ambulance service was between 21:00-23:59.

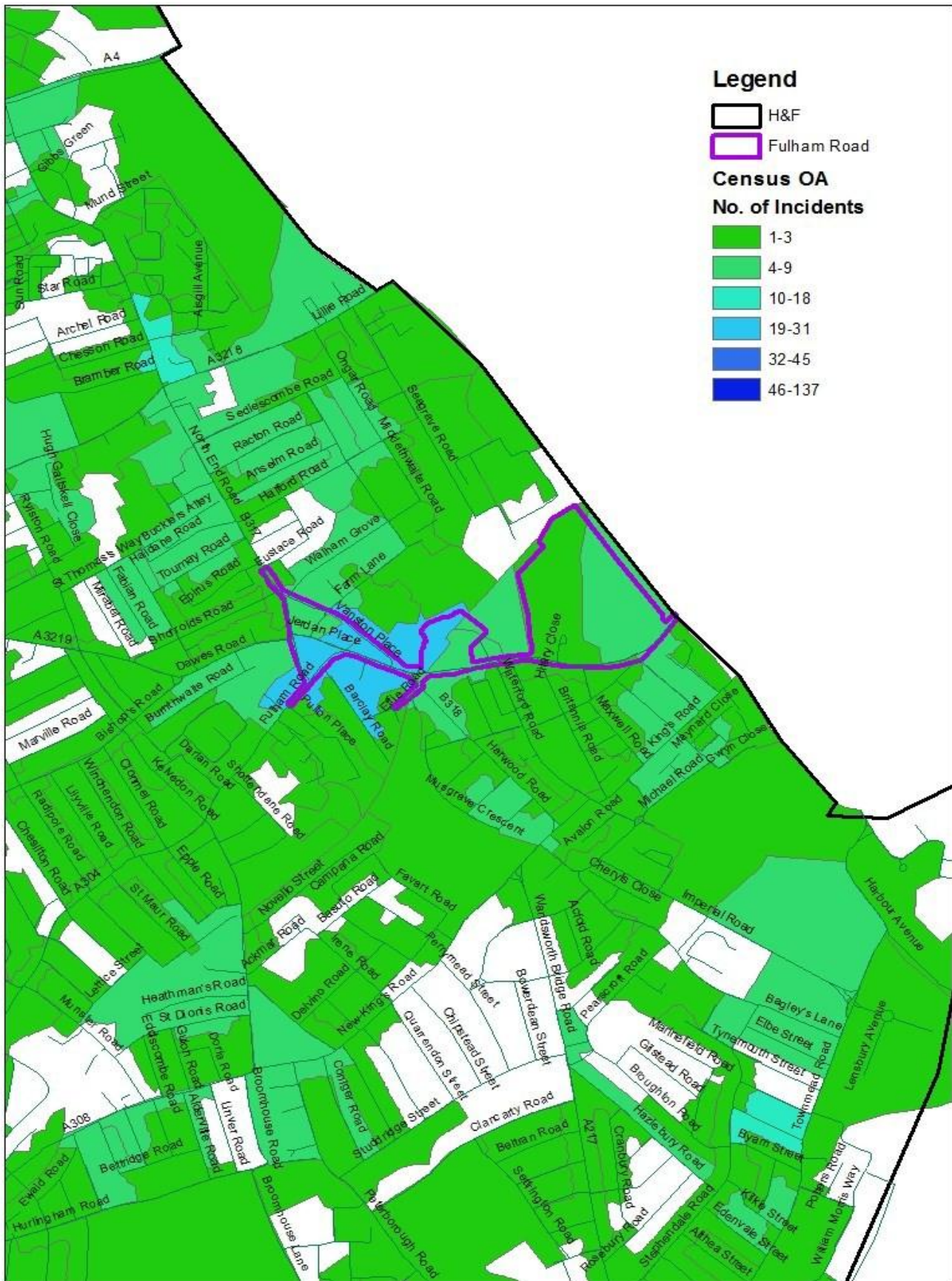


Incorporating the days into this analysis we are able to conclude that the peak time for assault related incidents is late afternoon and in the evening.



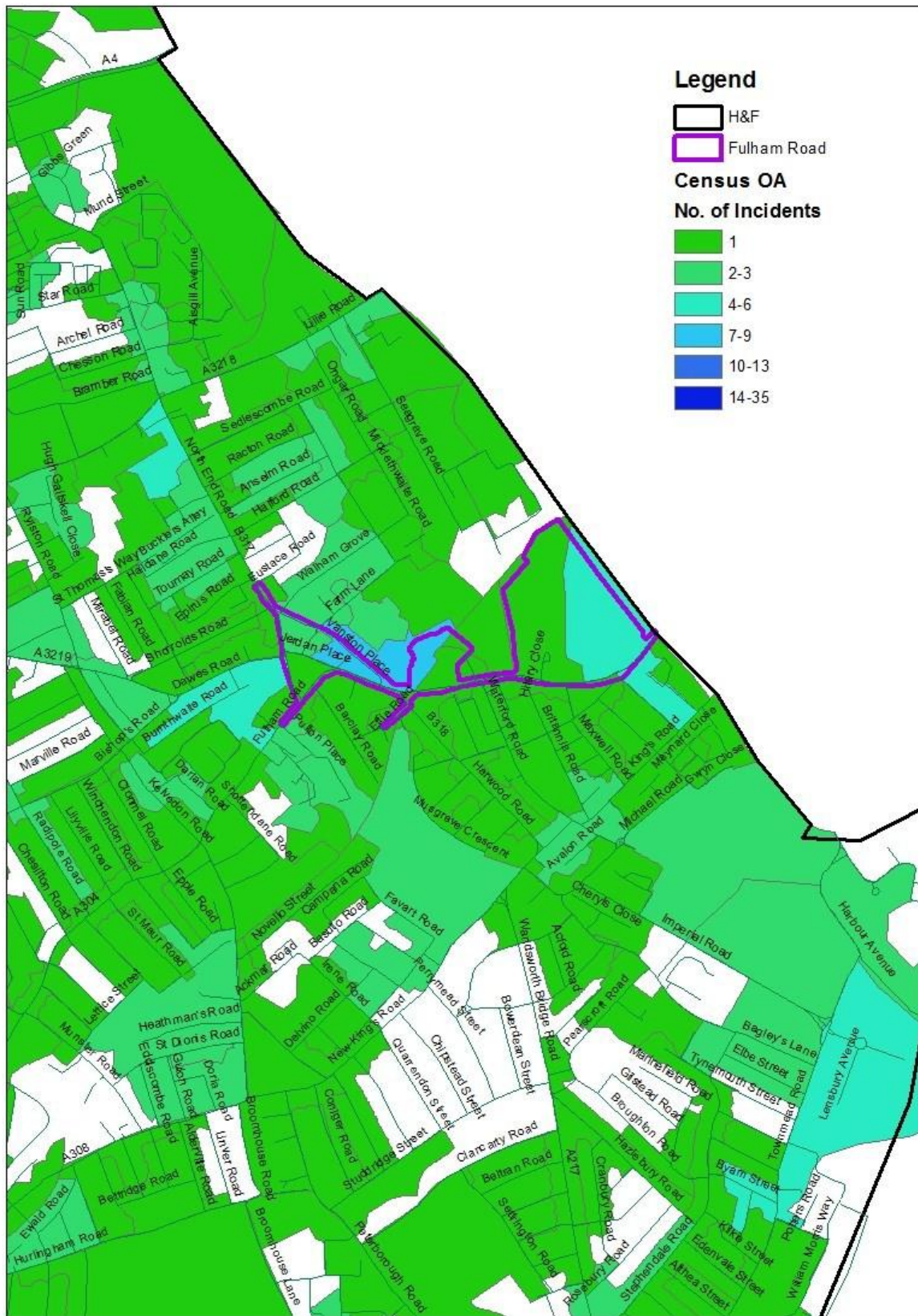
Alcohol Related Incidents - Mapping

When alcohol related incidents are mapped out across the Borough there are three main areas that show a high density of incidents. These areas are centralised across the three main town centres.



Assault Related Incidents - Mapping

When assault related incidents are mapped out across the Borough there are three main areas that show a high density of incidents. These areas are centralised across the three main town centres.



Police Data

Introduction

Using Police CRIS data, we are able to match which incidents occurred in the Fulham Town Centre area. Particularly focus of analysis is around incidents of Violence Against the Person and Criminal Damage, as research evidence these as the main crime types associated with licensed premises and alcohol.

CRIS Data – Overview

The following table contains the number of crimes by different crime categories for the calendar year 2014.

Crime Overview 2014

Crime Category	Jan	Feb	Mar	Apr	May	Jun	July	Aug	Sept	Oct	Nov	Dec	Grand Total
Burglary	3	1	1	2	0	0	1	1	2	1	3	2	17
Criminal Damage	1	1	3	2	3	0	2	2	4	0	2	1	21
Drugs	2	0	2	19	3	6	3	4	6	6	6	3	60
Fraud or Forgery	2	0	0	0	0	0	1	0	0	0	0	1	4
Other Accepted Crime	7	6	6	3	3	2	9	3	4	8	1	1	53
Other Notifiable Offence:	3	1	1	4	1	1	1	0	5	1	2	1	21
Robbery	2	0	1	1	1	0	0	1	0	0	3	0	9
Sexual Offences	0	1	1	0	1	0	1	0	0	1	0	0	5
Theft and Handling	22	13	19	14	19	20	14	33	9	10	14	9	196
Violence Against the Per	9	9	10	5	17	8	14	4	12	1	3	7	99
Grand Total	51	32	44	50	48	37	46	48	42	28	34	25	485

Violence Against a Person - Overview

The following table contains the breakdown of Violence Against a Person in 2014 by different crime categories.

	2014		
	FTC	LBHF	%
Assault with Injury	23	1061	2.2
Common Assault	25	1354	1.8
Harassment	42	1704	2.5
Offensive Weapon	5	106	4.7
Other Violence	0	171	0.0
Serious Wounding	4	459	0.9

Public Order Offences and Drunk & Disorderly

There was a total of 88 public order offences and 0 drunk & disorderly behaviour incidents that occurred in Fulham Town Centre area in 2014.

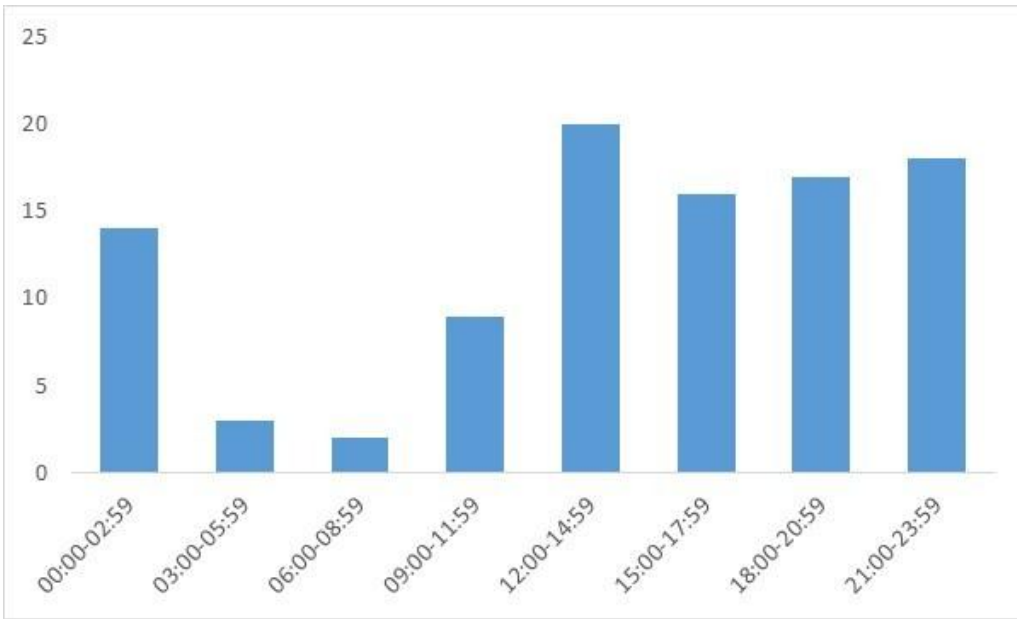
Criminal Damage - Overview

The table below shows the percentage of LBHF criminal damage incidents that occurred within the Fulham Town Centre area.

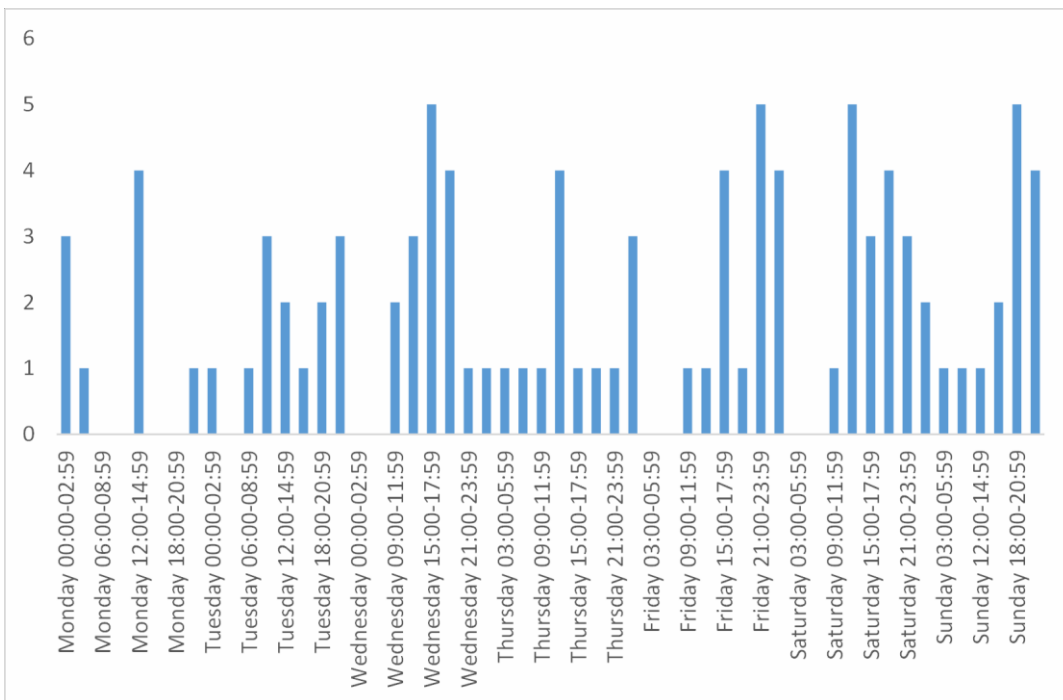
	2014		
	FTC	LBHF	%
Criminal Damage	21	1373	1.5

Violence Against the Person – Temporal

The peak for the number of Violence against the person incidents occurred over a range of time periods with little difference between the number of incidents occurring between 12:00 and 02:00

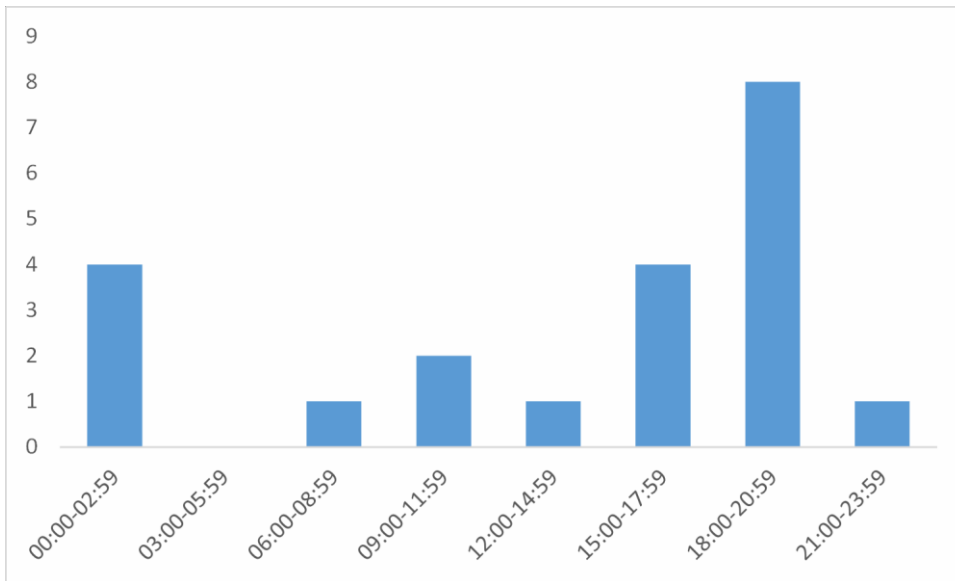


When expanding the analysis to incorporate days the highest number of incidents occurred on Wednesday 15:00-17:59, Friday 21:00-23:59, Saturday 12:00-14:59 and Sunday 18:00-20:59.

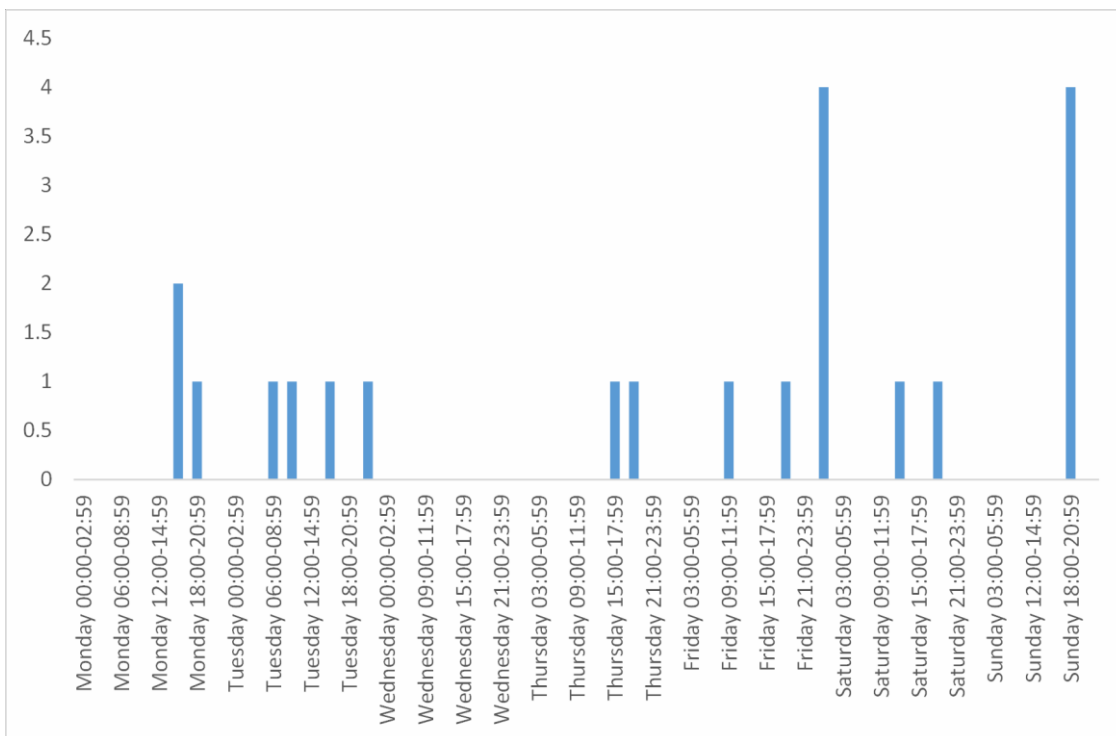


Criminal Damage – Temporal

The time slot 18:00-20:59 has the highest number of Criminal Damage incidents in Fulham Town Centre.



When expanding the analysis to incorporate days the highest number of incidents occurred on Saturday 00:00-02:59 and Sunday 18:00-20:59.



Transport for London (TFL) Data

Introduction

TFL Data is available from the London Analyst Support Site (LASS) down to X and Y Level. The datasets relates to anti-social behaviour that were recorded on and around bus travel in London.

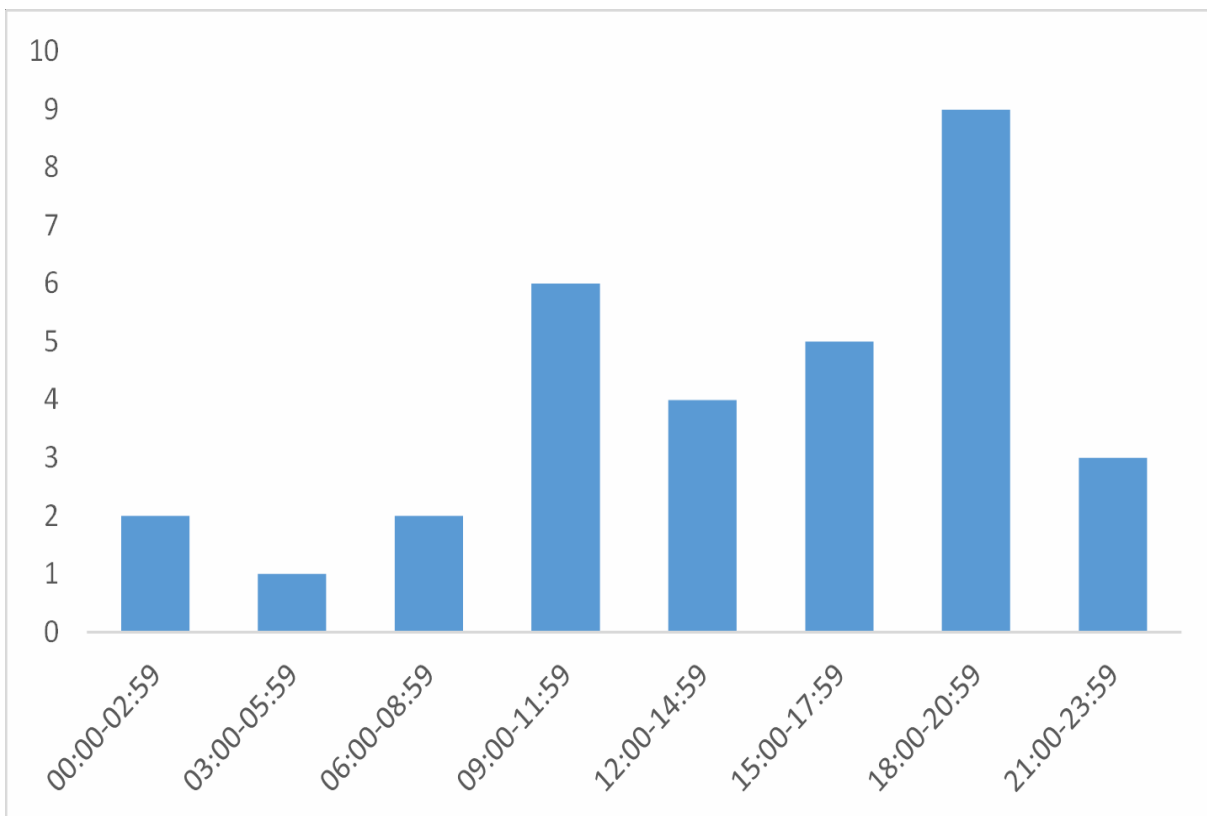
TFL Data - Overview

In total, there were 833 incidents that occurred in Hammersmith and Fulham in the calendar year 2014 of which 3.8% occurred in the Fulham Town Centre zone. Disturbance incidents accounted for 59% of total TFL incidents in the Fulham Town Centre area.

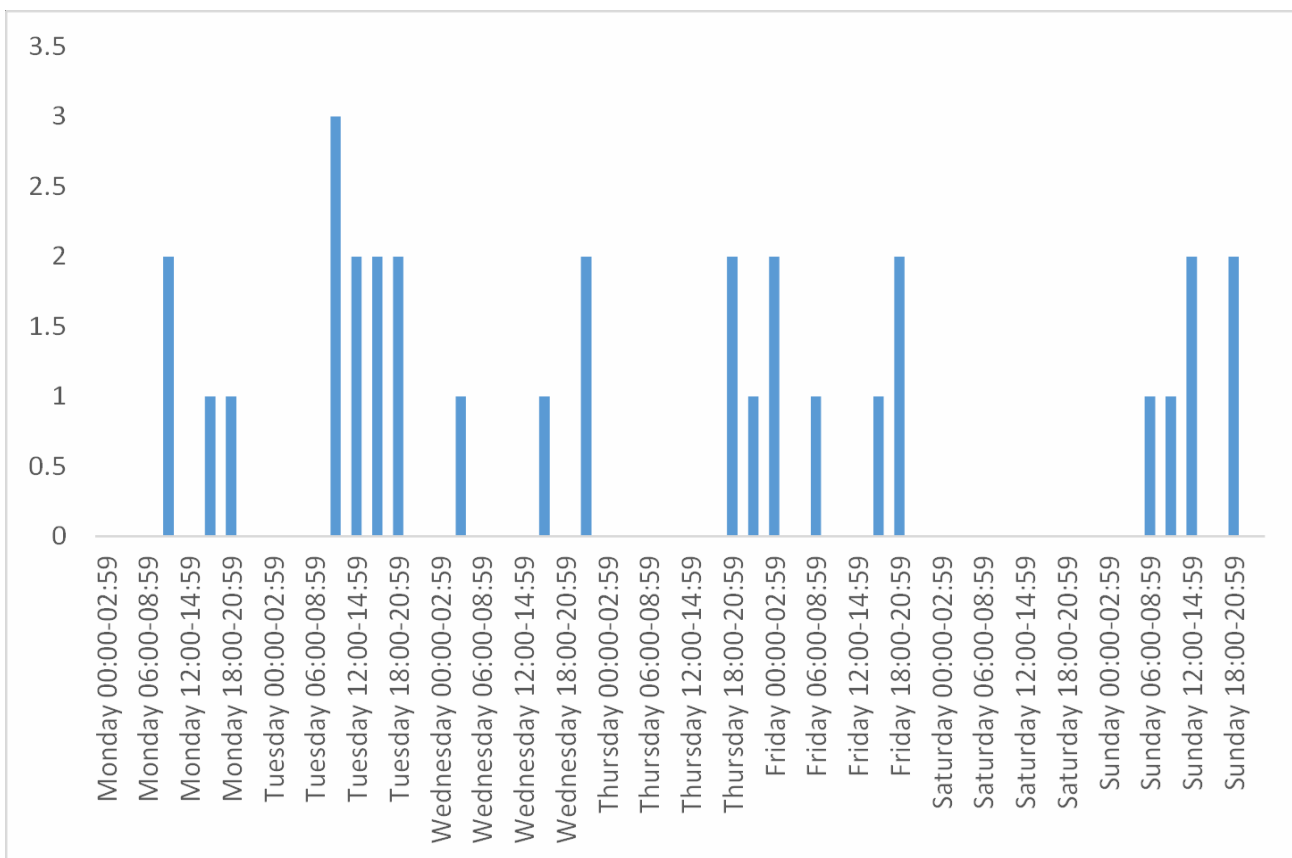
	FTC	H&F	%
Criminal Damage	1	18	5.6
Disturbance	19	493	3.9
Fraud or Forgery	9	262	3.4
Robbery	0	5	0.0
Theft and Handling	0	3	0.0
Violence Against the Person	3	52	5.8
Total	32	833	3.8

TFL Data - Temporal

The time slot of 18:00-20:59 has the highest number of TFL incidents.

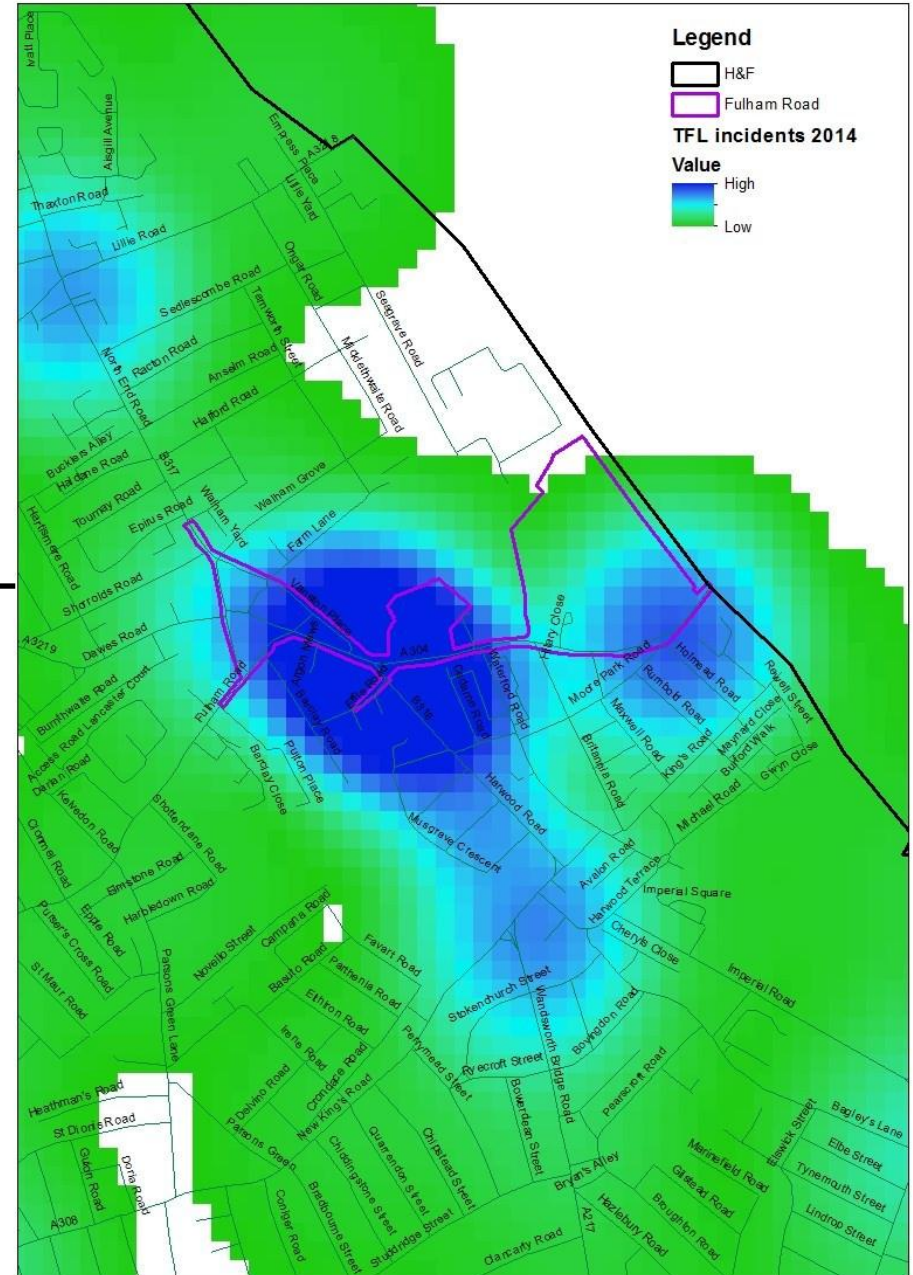
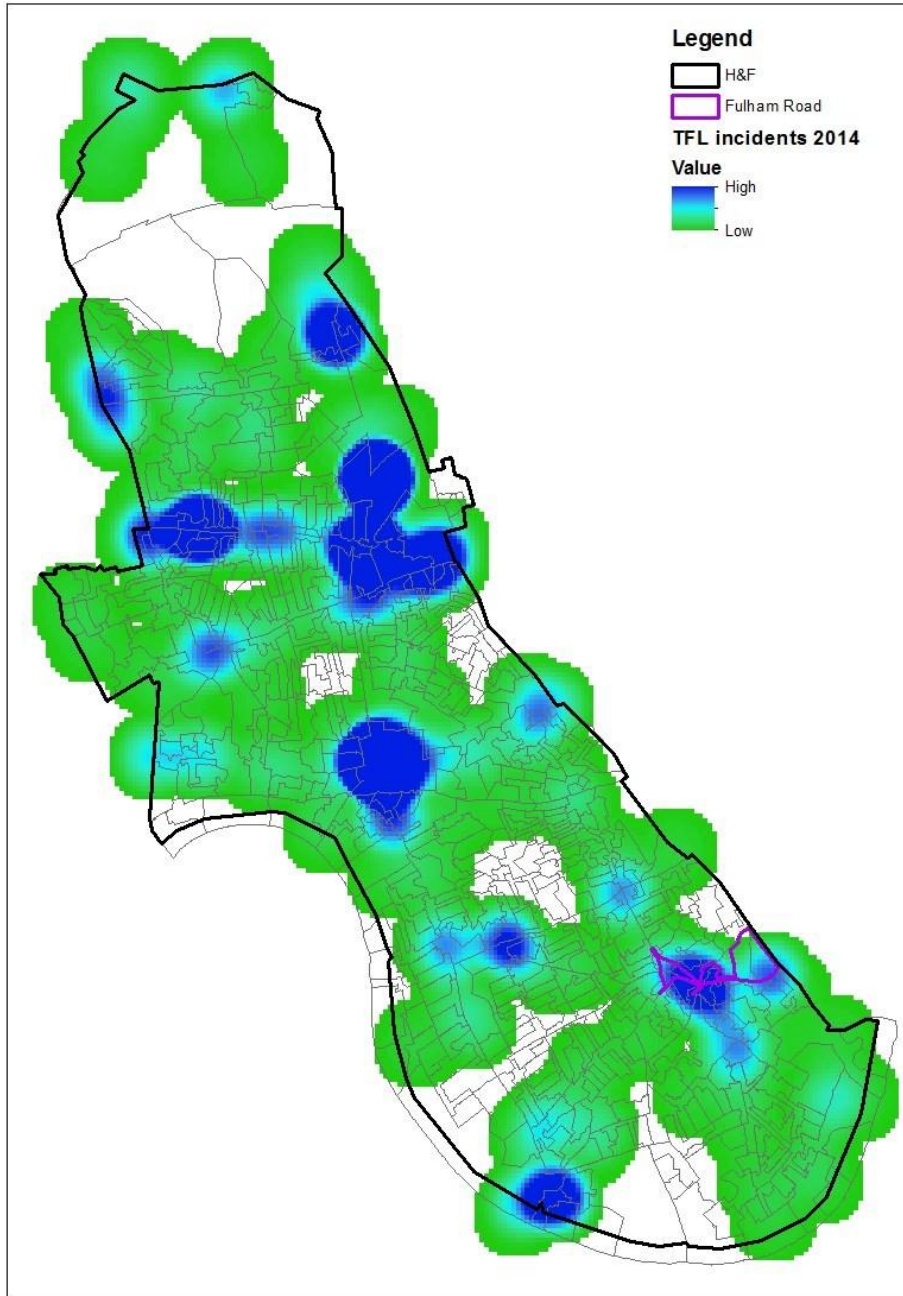


When expanding the analysis to incorporate days the highest number of incidents occurred in the early evening.



TFL Data - Mapping

The following map shows the spread of TFL incidents across the Borough with hotspots occurring in key transport hub locations.



Noise Complaints

Introduction

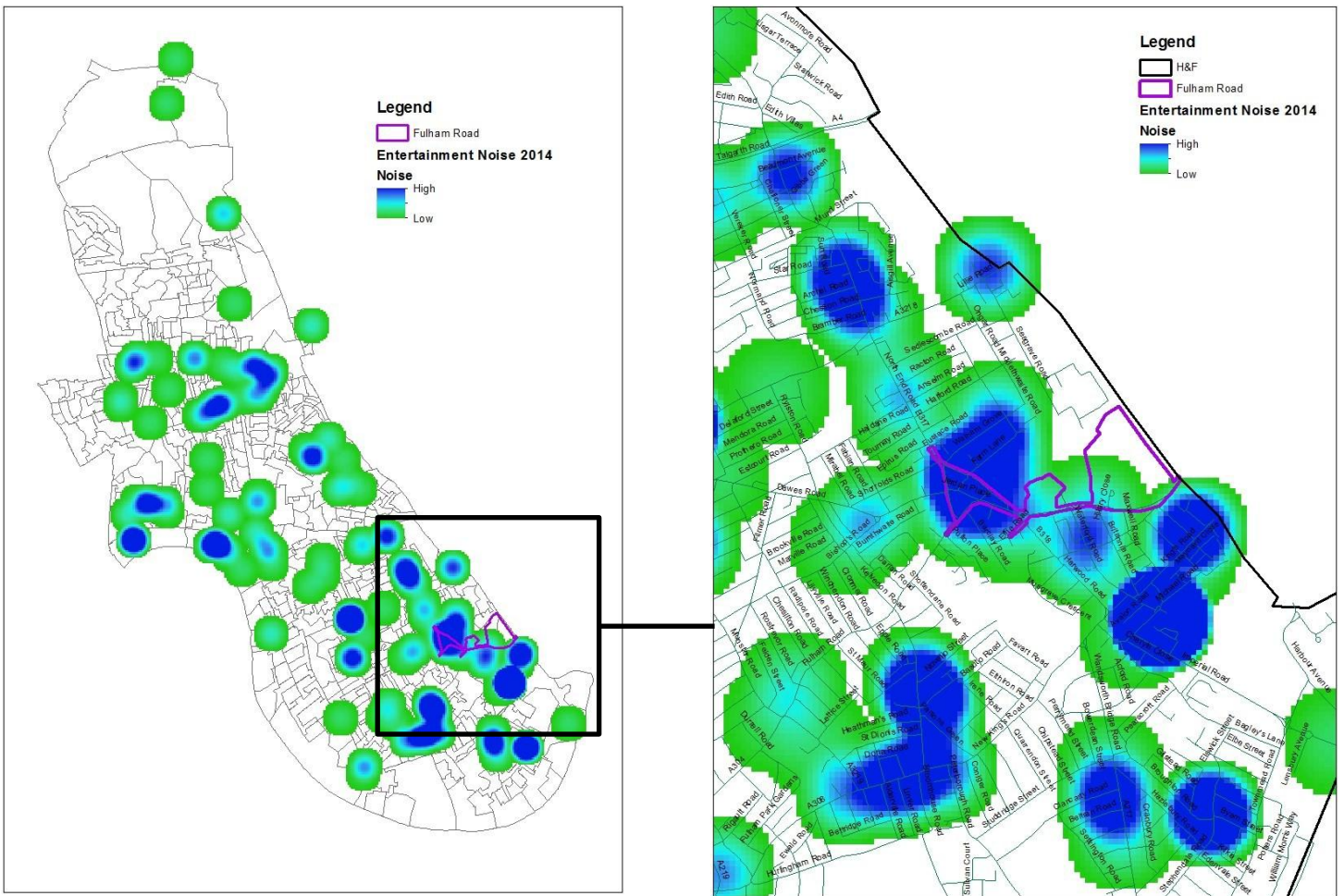
The following data relates to Entertainment Noise Calls taken by the Environment Noise Nuisance Team between the 1st January 2014 to the 31st December 2014.

Noise Data - Overview

H&F received a total of 419 calls relating to entertainment noise during 2014 with 25 (6.0%) of these calls occurring in the Fulham Town Centre Area.

Noise Data - Mapping

Mapping entertainment noise calls show a number of high density areas in LBHF.



Annex 4-

Special licensing policy for the Shepherd's Bush Area

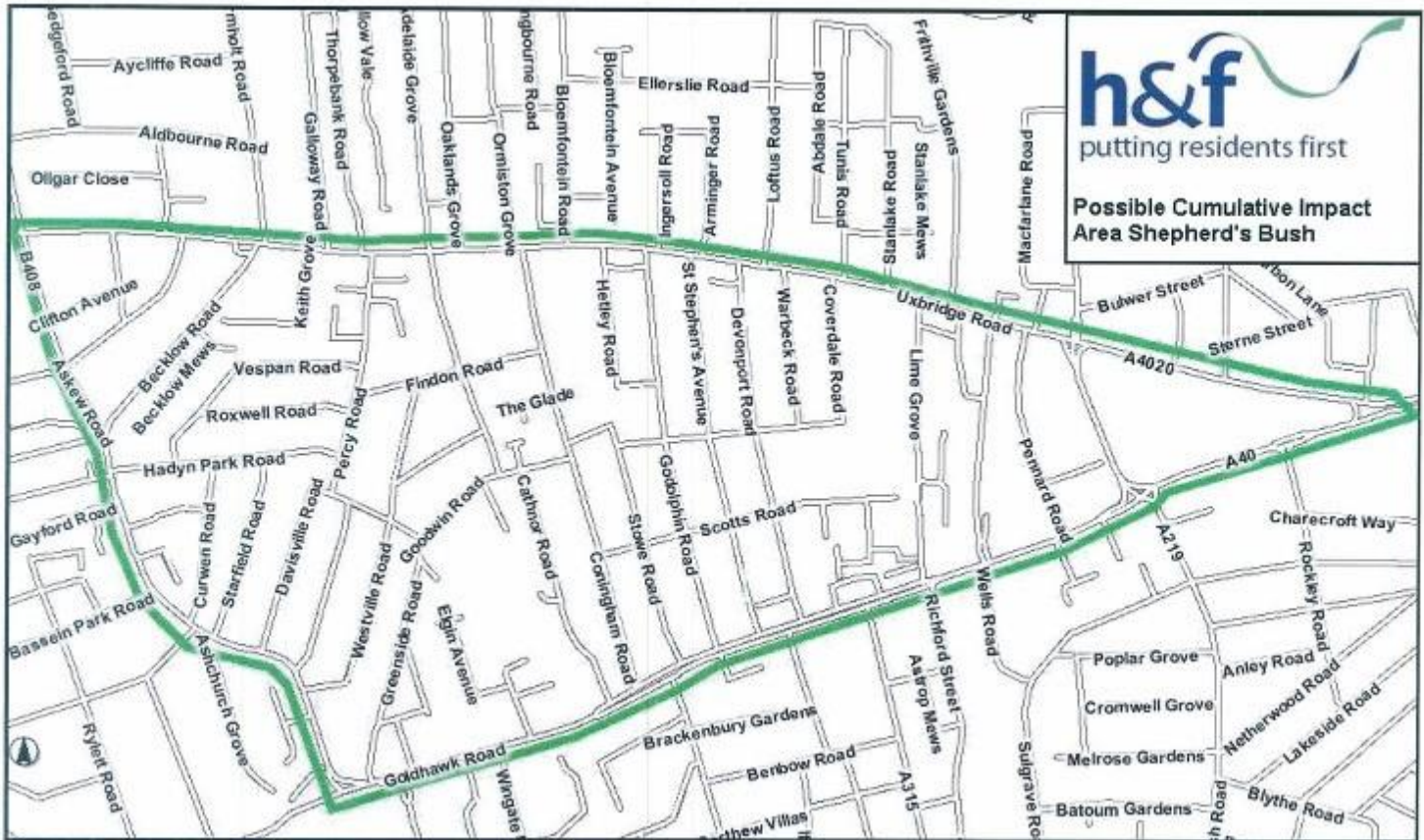
1. The Council has decided to introduce a special policy relating to cumulative impact (as provided by the Secretary of State in the Guidance issued under section 182 of the Licensing Act 2003 (paragraphs 13.24 to 13.39) and the Council's own Statement of Licensing policy dated January 2011 (paragraph 6.1 to 6.7) to the Shepherd's Bush Area (being the area outlined and all premises which have a principal form of access onto the outlined area as shown on the attached map).

2. "Cumulative impact" means the potential impact on the promotion of the licensing objectives of a significant number of licensed premises concentrated in one area.

3. The four licensing objectives are:-

- The prevention of Crime and Disorder
- Public Safety
- The prevention of Public Nuisance
- The protection of Children from Harm
- Protection

4. This policy will apply to all licensed premises as the Shepherd's Bush Area has been identified as being adversely affected in terms of the licensing objectives because of the cumulative impact of the concentration of licensed premises.



h&f
 putting residents first

Possible Cumulative Impact Area Shepherd's Bush

November 2010

5. There is evidence that the cumulative impact includes serious problems of crime, disorder and public nuisance. Having regard to the evidence, the Licensing Authority has been satisfied that it is appropriate and necessary to include an approach to cumulative impact. The evidence for this special policy may be viewed on request at the Council Offices.

6. Applications for new premises licences, club premises certificates or any variations within the Shepherd's Bush Area that are likely to add to the existing cumulative impact will normally be refused where a relevant representation has been made, unless the applicant can demonstrate that there will be no negative cumulative impact on one or more of the four licensing objectives. Accordingly, the presumption of refusal in this policy is not absolute and the circumstances of each application will be considered where a relevant representation has been made.

7. The presumption of refusal does not relieve responsible authorities or interested parties of the need to make a relevant representation. Applicants will need to address the special policy issues in their operating schedules. If there are no representations the licensing authority must grant the application in terms consistent with the operating schedule submitted.

8. The cumulative impact policy will be kept under review by the Licensing Authority

ANNEX 5

Shepherds Bush Area Cumulative Impact Zone Data Report 2015

Shepherds Bush Area - Cumulative Impact Zone

Ambulance Data

Introduction

Ambulance data is available from the London Analyst Support Site (LASS) down to Census output area. Within the full dataset, the information can be filtered for 'Alcohol Related' and 'Assaults'.

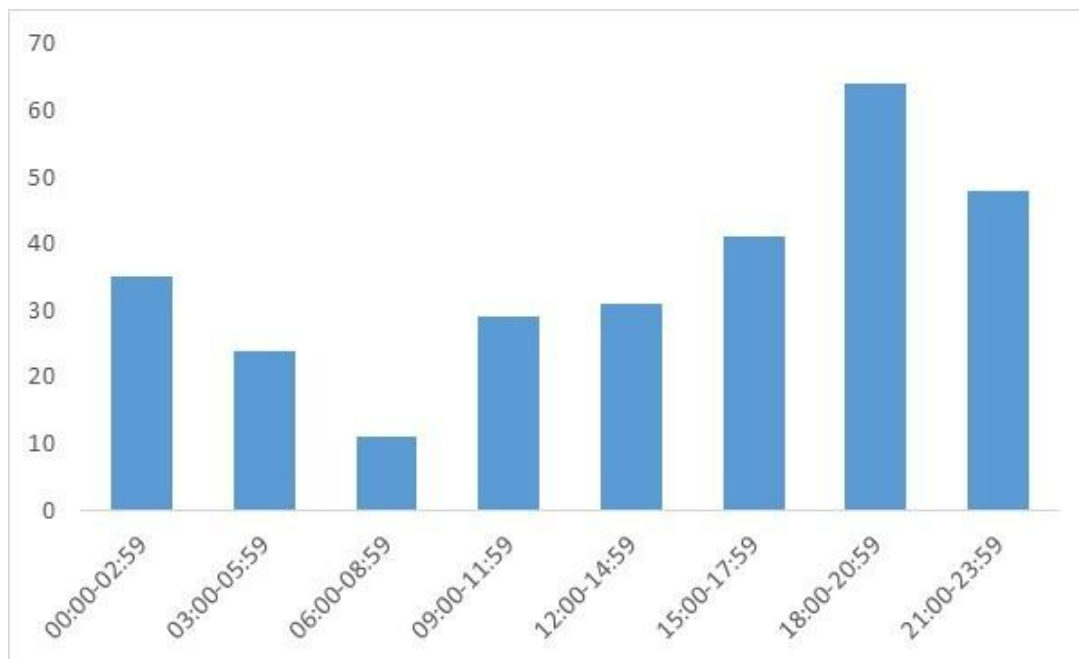
Please note that Census output areas do not exactly match the Shepherds Bush Area boundaries so centroids have been used to approximate the number of incidents that occur within the area.

Alcohol Related Incidents – Overview

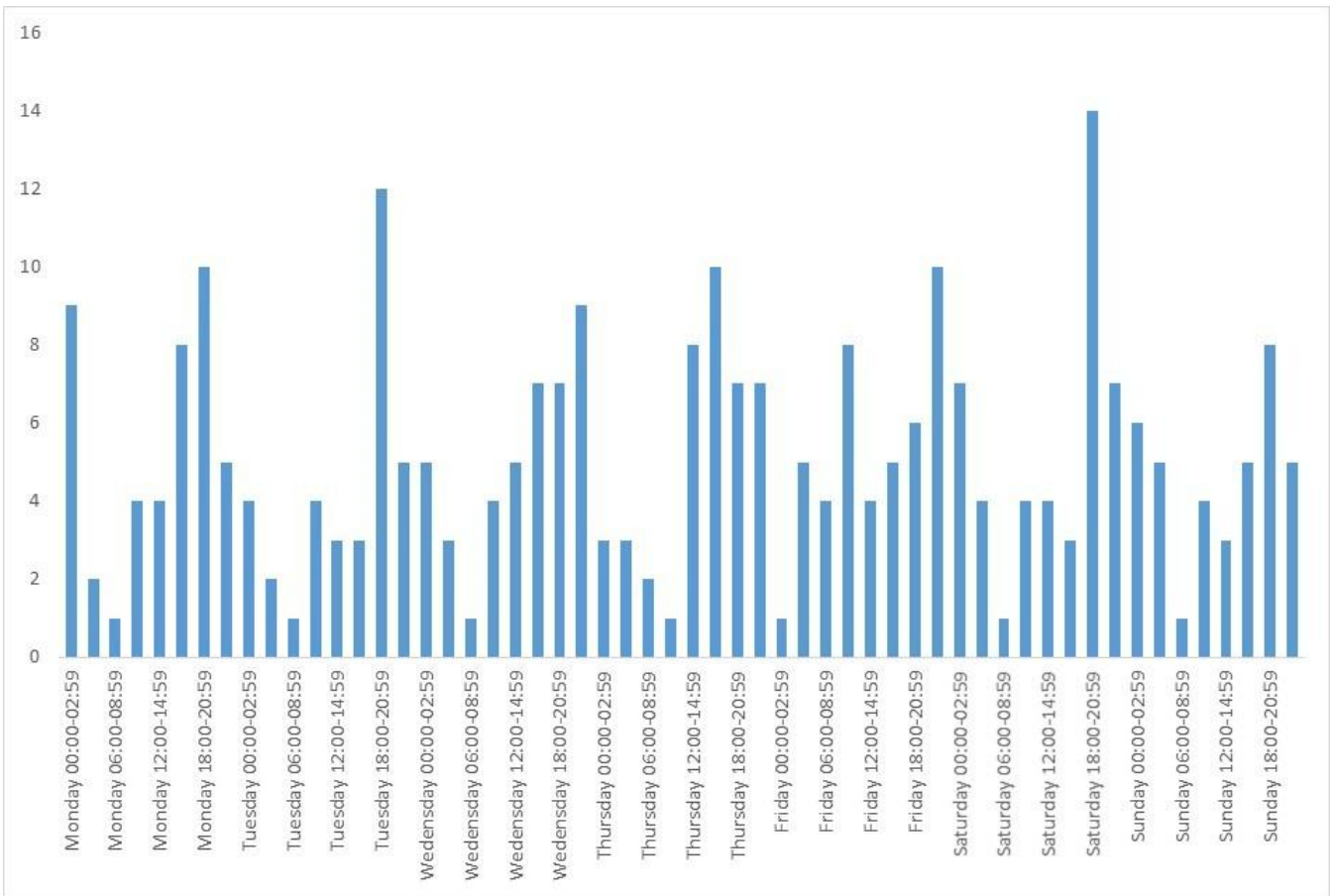
There were a total of 1741 alcohol related incidents that occurred in LBHF in 2014. Of these 283 (16.3%) incidents occurred in the Shepherds Bush Area

Temporal Analysis

Looking specifically at the SBG area, the hours of 18:00-23:59 show the peak number of alcohol related incidents to the Ambulance Service.



Incorporating the days into this analysis we are able to conclude that the peak times for alcohol related incidents are Saturday 18:00-20:59, Tuesday 18:00-20:59 and Friday 21:00-23:59.

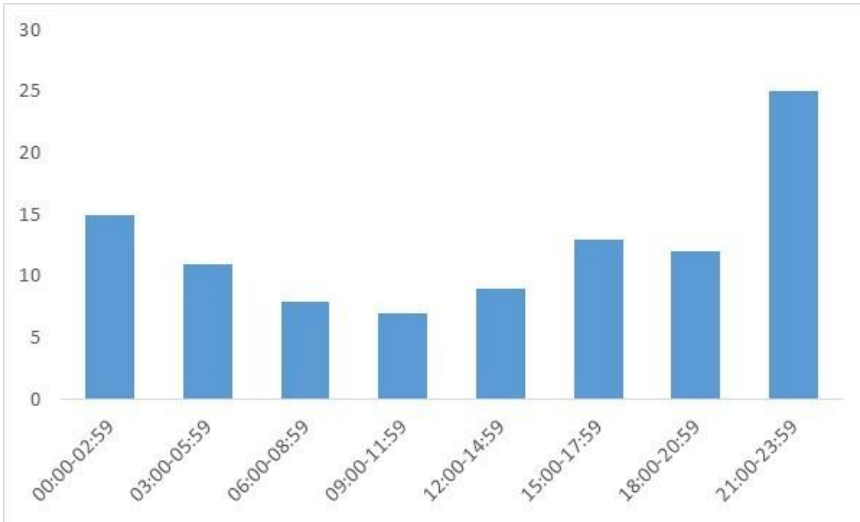


Assault Related Incidents – Overview

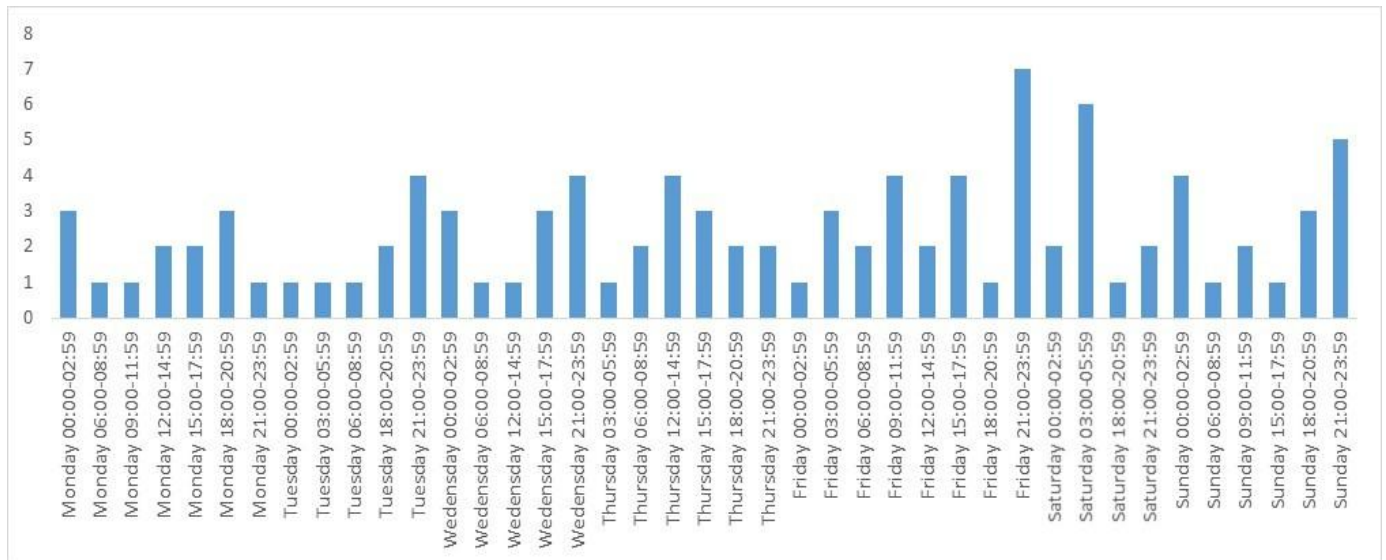
There were a total of 650 assault related incidents that occurred in LBHF in 2014. Of these 200 (30.7%) incidents occurred in the Shepherds Bush Area

Temporal Analysis

Looking specifically at the SBG area, the hours of 21:00-23:59 show the peak number of assault related incidents to the Ambulance Service.

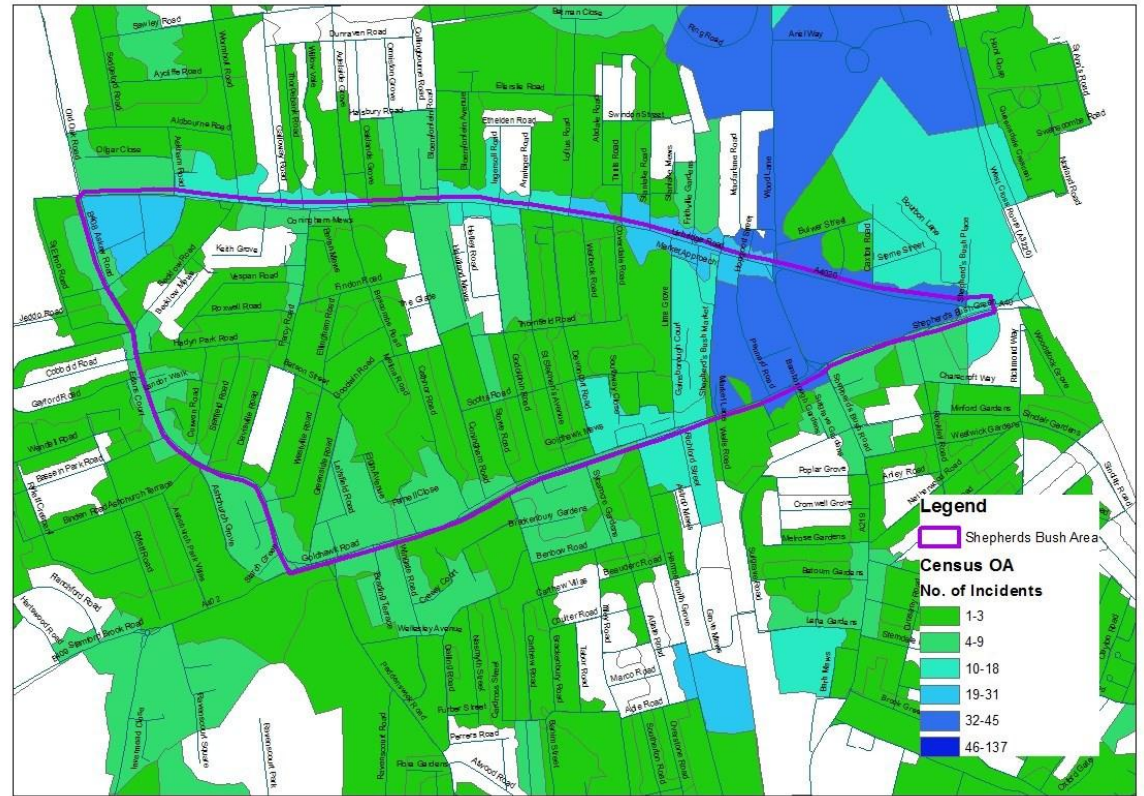
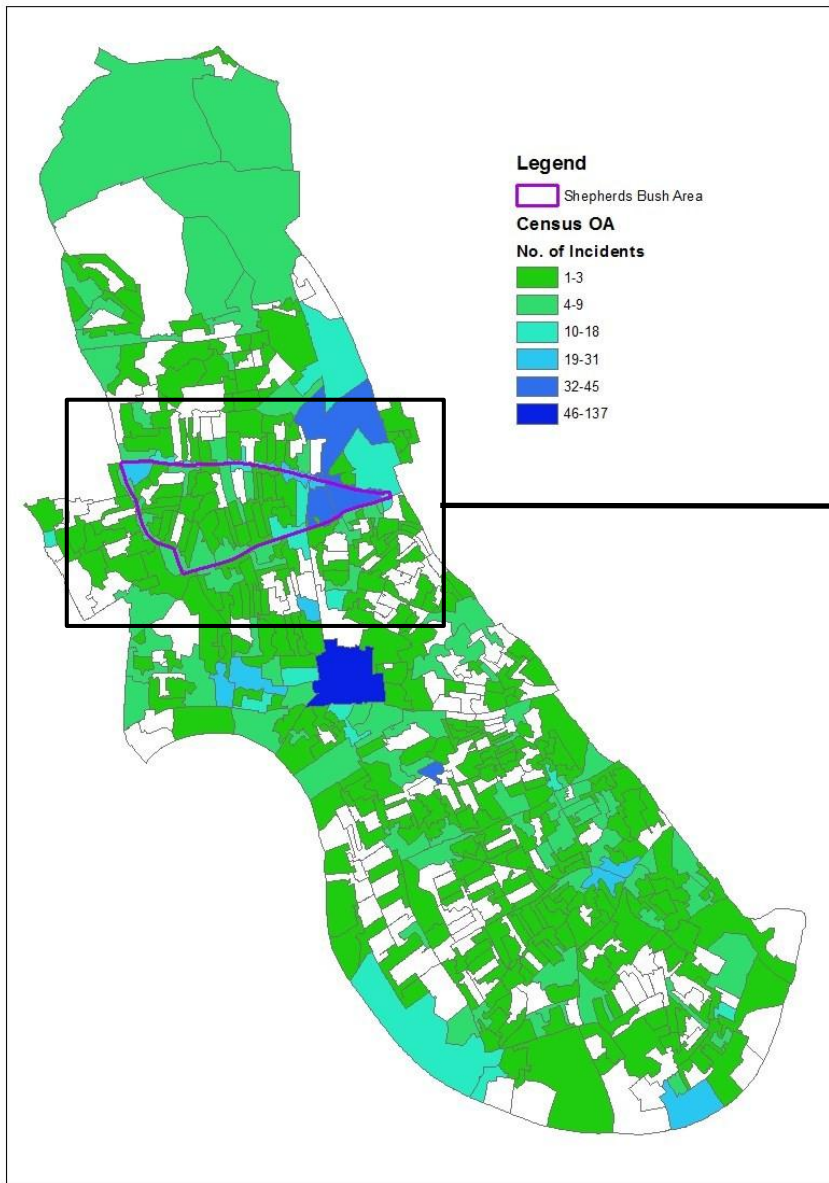


Incorporating the days into this analysis we are able to conclude that the peak times for assault related incidents are Friday 21:00-23:59 and Saturday 03:00-05:59.



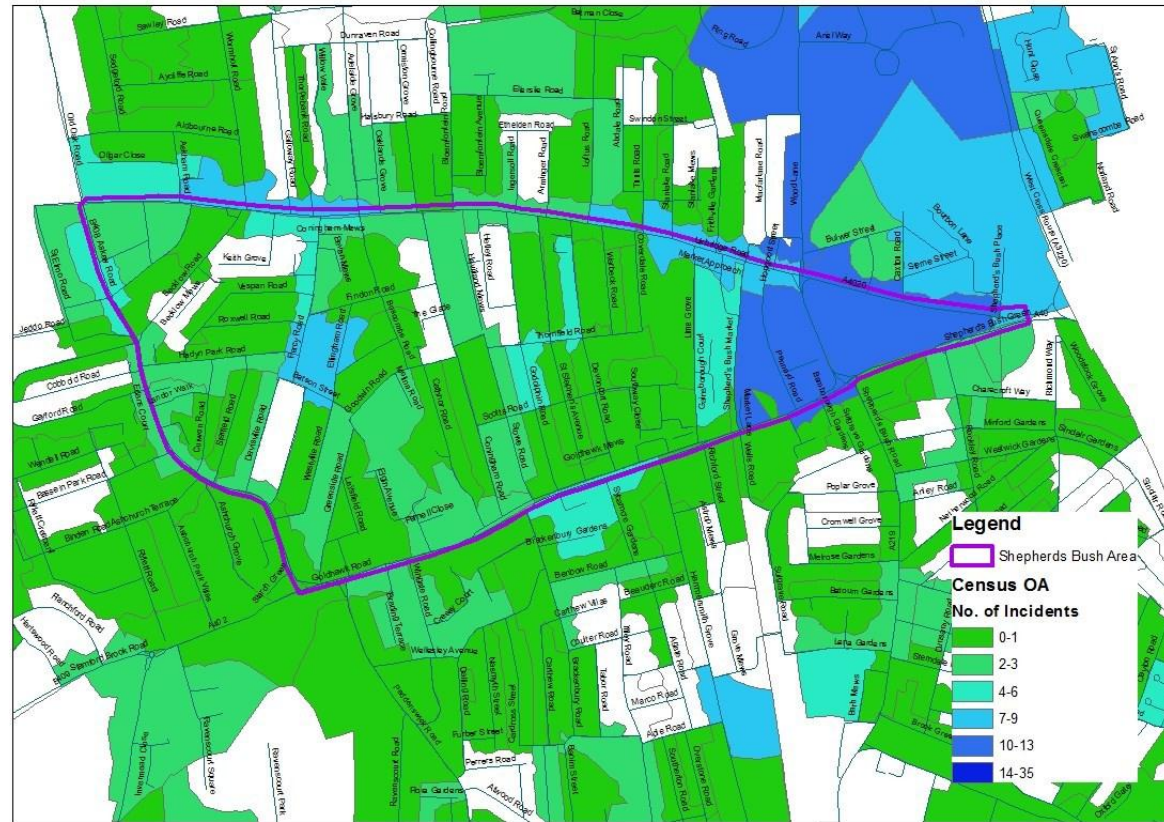
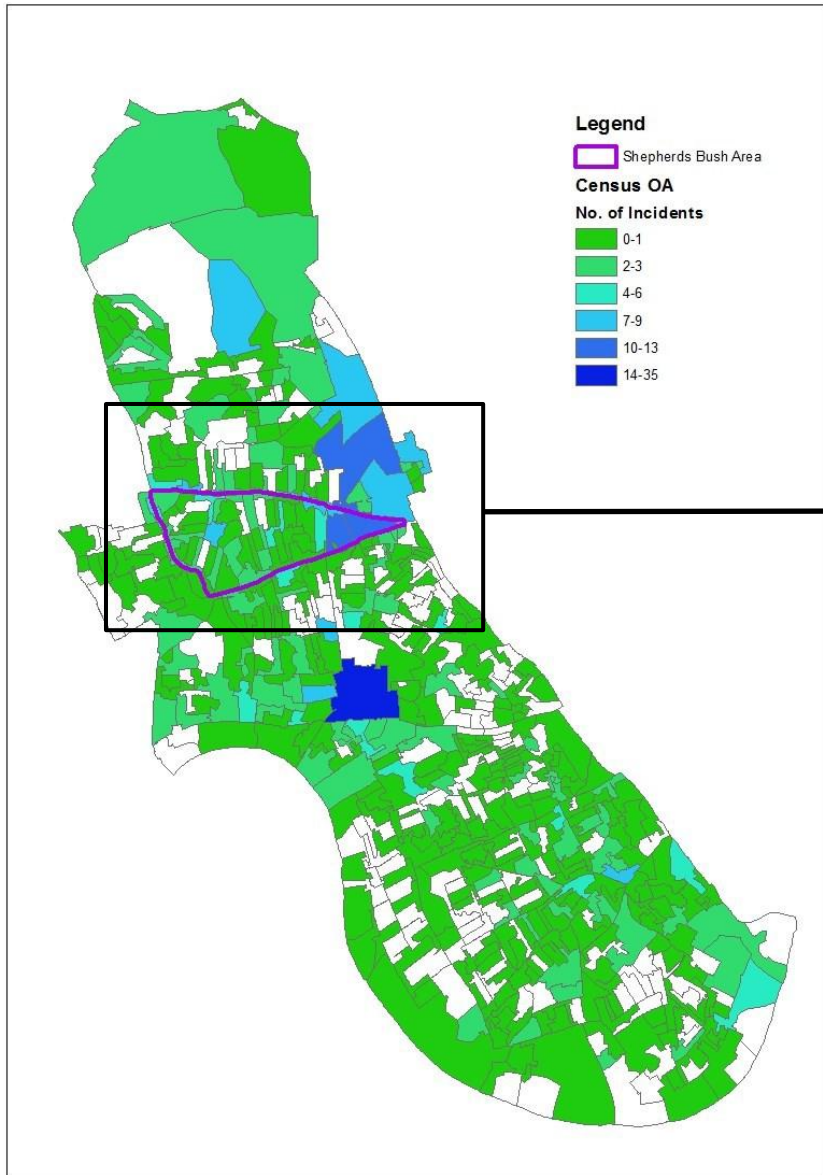
Alcohol Related Incidents - Mapping

When alcohol related incidents are mapped out across the Borough there are three main areas that show a high density of incidents. These areas are centralised across the three main town centres including Shepherd's Bush Green.



Assault Related Incidents - Mapping

When assault related incidents are mapped out across the Borough there are three main areas that show a high density of incidents. These areas are centralised across the three main town centres including Shepherd's Bush Green.



Police Data

Introduction

Using Police CRIS data, we are able to match which incidents occurred in the Shepherd Bush area. Particularly focus of analysis is around incidents of Violence Against the Person and Criminal Damage, as research evidence these as the main crime types associated with licensed premises and alcohol.

CRIS Data – Overview

The following table contains the number of crimes by different crime categories for the calendar year 2014.

Crime Overview 2014

Crime Category	Jan	Feb	Mar	Apr	May	Jun	July	Aug	Sept	Oct	Nov	Dec	Total
Burglary	10	7	7	15	5	11	9	13	12	9	8	17	123
Criminal Damage	9	10	11	14	12	16	15	15	9	12	14	17	154
Drugs	16	24	40	20	18	25	23	27	10	20	11	13	247
Fraud or Forgery	3	2	2	3	0	0	0	2	1	3	3	1	20
Other Accepted Crime	33	46	53	39	28	43	33	31	38	34	33	41	452
Other Notifiable Offences	6	12	15	9	4	11	11	5	4	13	8	6	104
Robbery	4	4	1	5	6	8	3	5	4	9	4	6	59
Sexual Offences	4	0	3	4	1	5	7	1	2	7	4	3	41
Theft and Handling	83	64	75	87	78	84	63	71	69	71	84	63	892
Violence Against the Person	42	46	69	66	64	69	67	67	60	57	47	59	713
Total	210	215	276	262	216	272	231	237	209	235	216	226	2805

Violence Against a Person - Overview

The following table contains the breakdown of Violence Against a Person in 2014 by different crime categories.

	2014		
	SBA	LBHF	%
Assault with Injury	189	1061	17.8
Common Assault	190	1354	14.0
Harassment	257	1704	15.1
Offensive Weapon	20	106	18.9
Other Violence	20	171	11.7
Serious Wounding	37	459	8.1

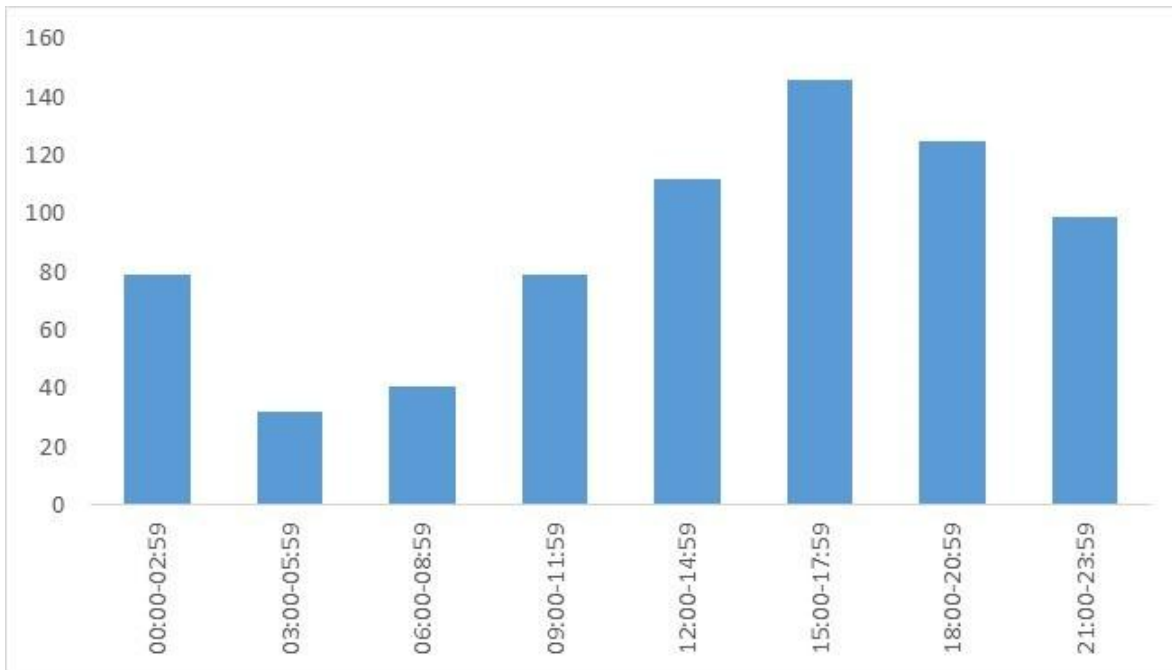
Criminal Damage - Overview

The table below shows the percentage of LBHF criminal damage incidents that occurred within the Shepherds Bush Area.

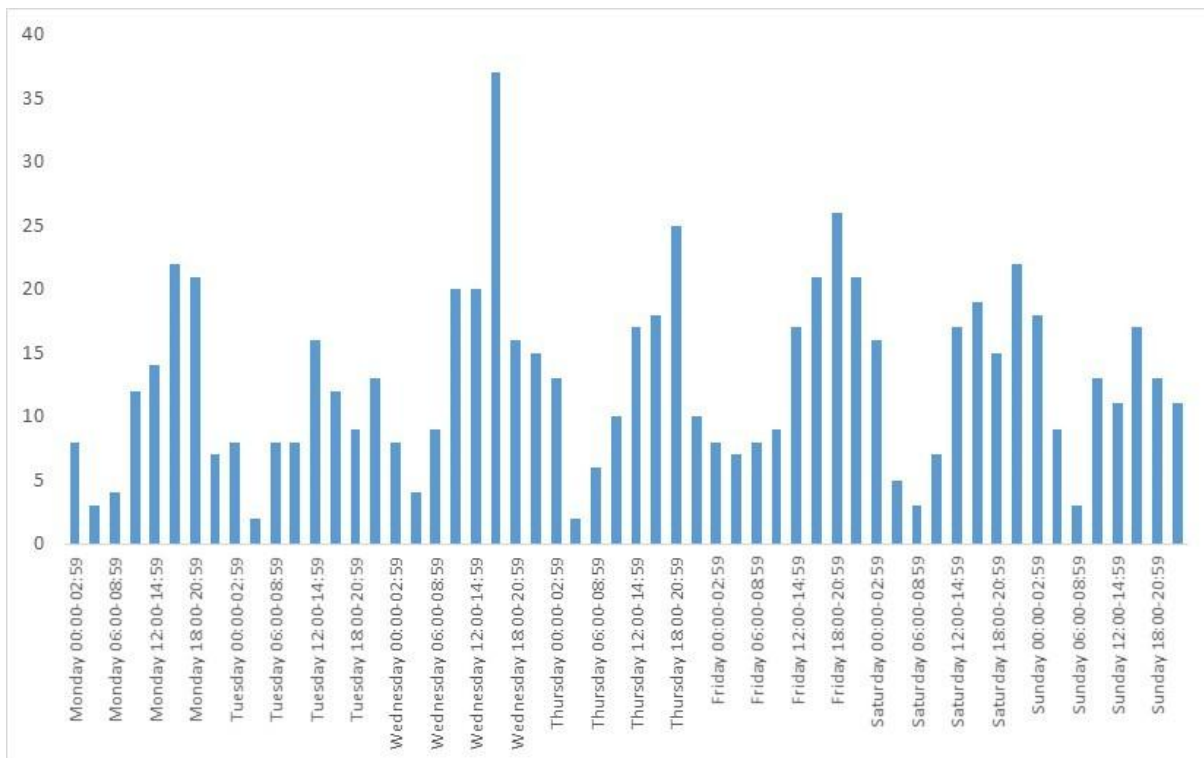
	2014		
	SBA	LBHF	%
Criminal Damage	154	1373	11.2

Violence Against the Person – Temporal

The time slots 15:00-17:59 and 18:00-20:59 have the highest number of Violence Against the Person incidents. This has changed since 2010 when the time slots 21:00-23:59 and 00:00-02:59 had the highest amount of incidents.

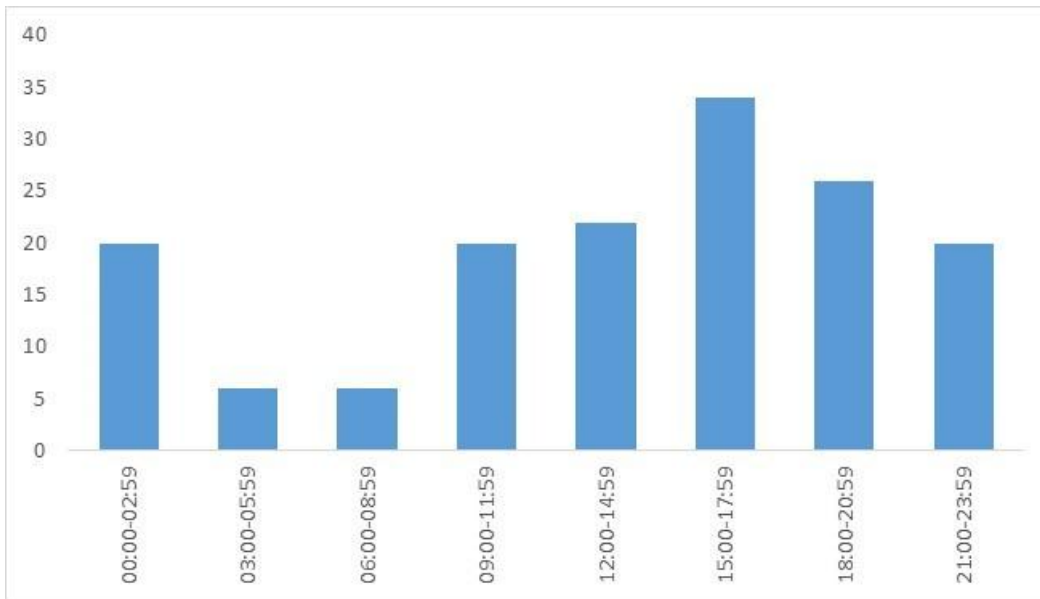


When expanding the analysis to incorporate days the highest number of incidents occurred on Wednesday 15:00-17:59. The peak for most other days occurs in the early evening time slot of 18:00-20:59.

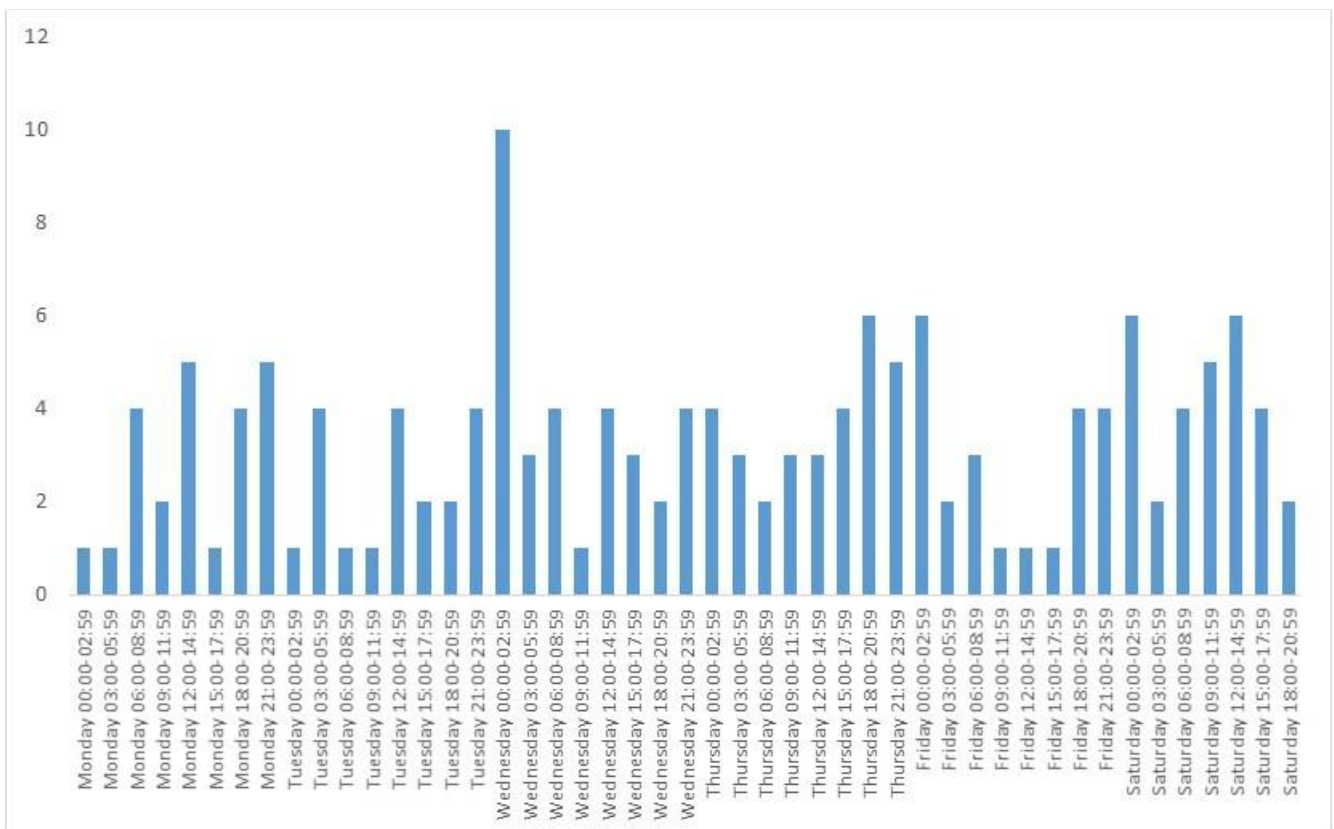


Criminal Damage – Temporal

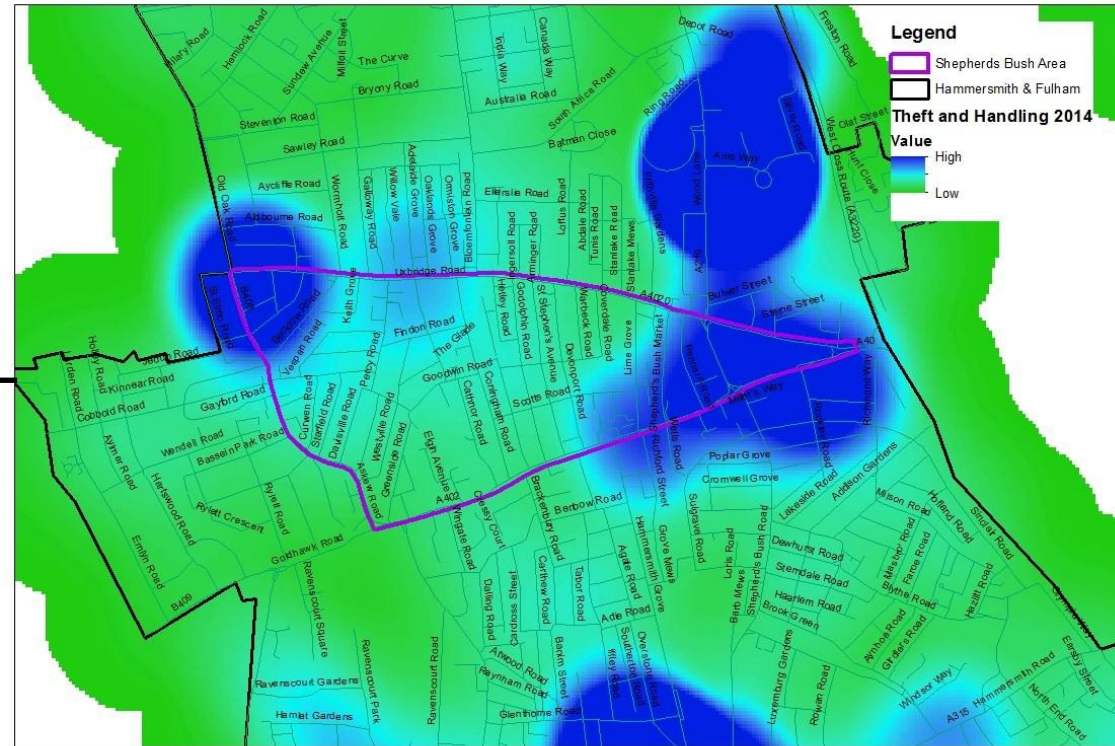
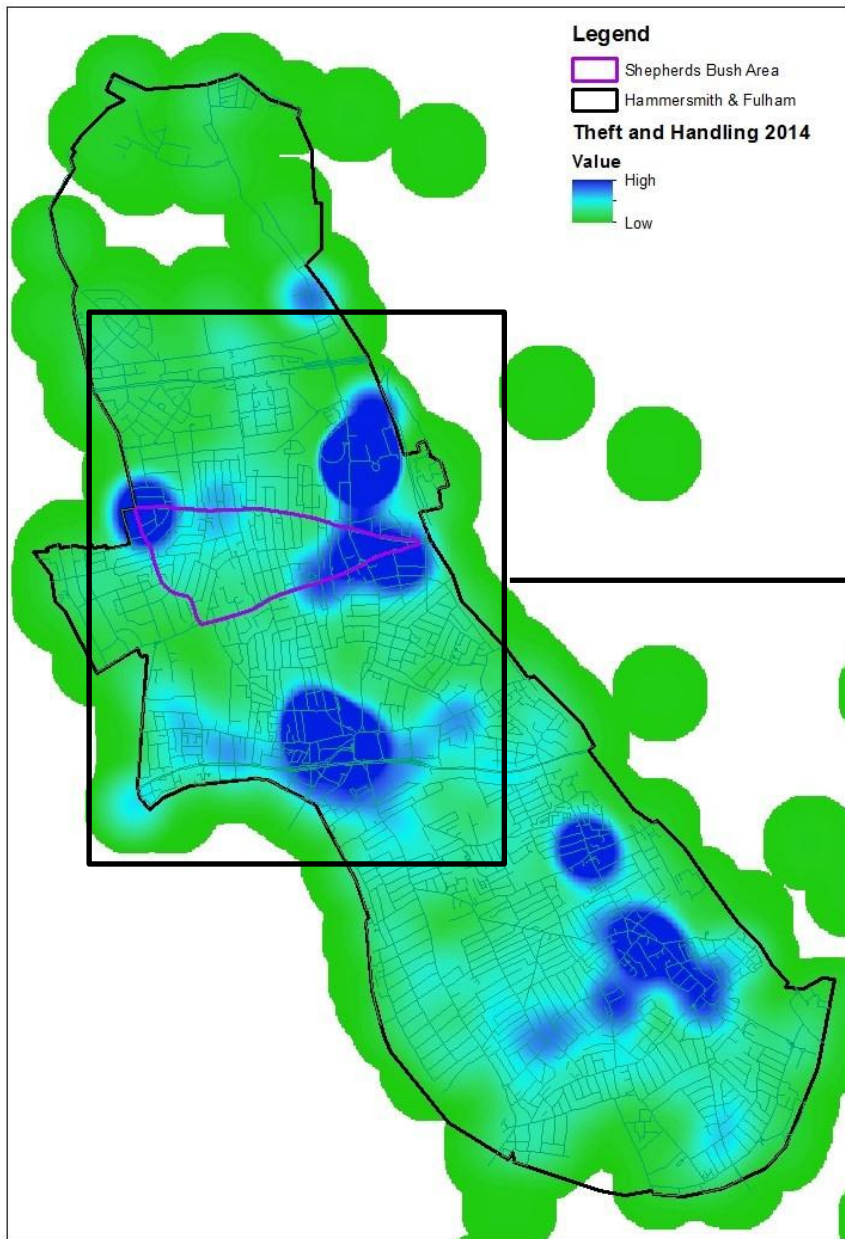
The time slots 15:00-17:59 and 18:00-20:59 have the highest number of Criminal Damage incidents.



When expanding the analysis to incorporate days the highest number of incidents occurred on Wednesday 00:00-02:59.



Theft and Handling Stolen Goods



Transport for London (TFL) Data

Introduction

TFL Data is available from the London Analyst Support Site (LASS) down to X and Y Level. The datasets relates to anti-social behaviour that were recorded on and around bus travel in London.

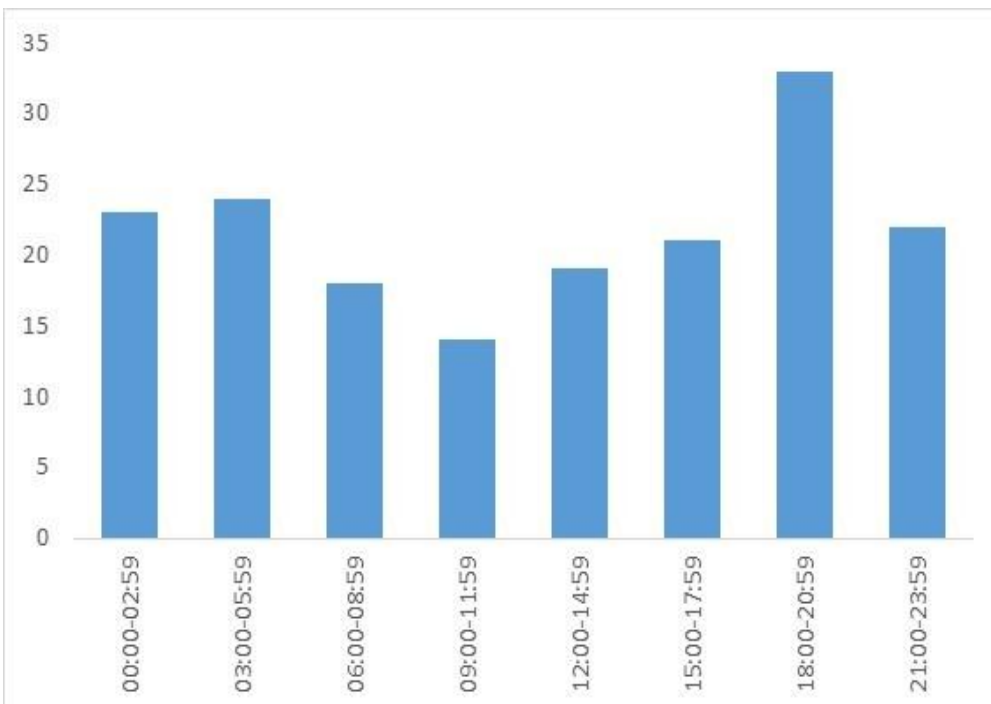
TFL Data - Overview

In total, there were 833 incidents that occurred in Hammersmith and Fulham in the calendar year 2014 of which **20%** occurred in the SBA zone. Disturbance incidents accounted for 53% of total TFL incidents in the Shepherds Bush Area.

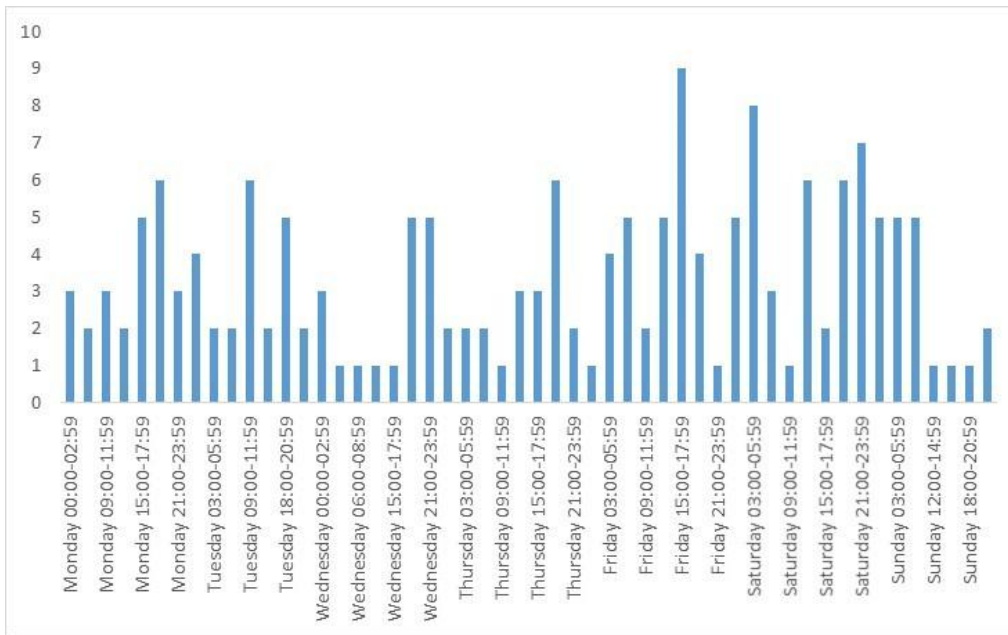
	SBA	H&F	%
Criminal Damage	5	18	27.8
Disturbance	92	493	18.7
Fraud or Forgery	67	262	25.6
Robbery	1	5	20.0
Theft and Handling	0	3	0.0
Violence Against the Person	9	52	17.3
Total	174	833	20.9

TFL Data - Temporal

The time slot of 18:00-20:59 has the highest number of TFL incidents.

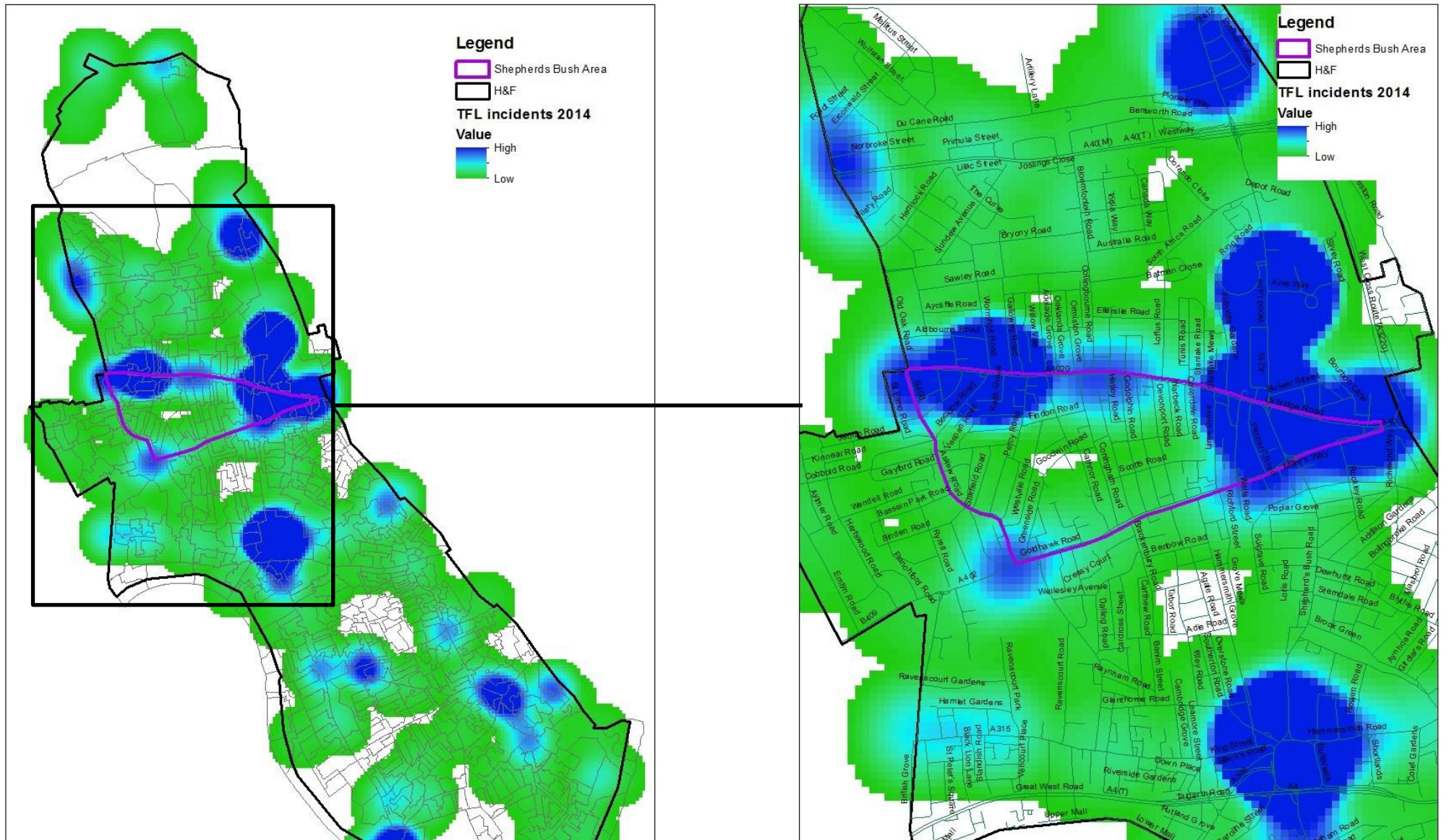


When expanding the analysis to incorporate days the highest number of incidents occurred on Friday 15:00-17:59, Saturday 03:00-05:59 and Saturday 21:00-23:59.



TFL Data – Mapping

The following map shows the spread of TFL incidents across the Borough with hotspots occurring in key transport hub locations.



Noise Complaints

Introduction

The following data relates to Entertainment Noise Calls taken by the Environment Noise Nuisance Team between the 1st January 2014 to the 31st December 2014.

Noise Data - Overview

H&F received a total of 419 calls relating to entertainment noise during 2014 with 49 (11.7%) of these calls occurring in Shepherds Bush Area.

Noise Data - Mapping

Mapping entertainment noise calls show a number of high density areas in LBHF.

