

Moving on up

A guide for parents with children
transferring to secondary school in 2026



Apply online:
**[www.lbhf.gov.uk/
eadmissions](https://www.lbhf.gov.uk/eadmissions)**

The Pan-London eAdmissions site opens
on 1 September 2025.

If your child is currently in Year 6 and born
between 1 September 2014 and 31 August
2015, you will need to apply for a secondary
school place by 31 October 2025.

Contents

Introduction

- 4 Welcome**
- 5 About secondary school admissions**
- 5 Introduction to H&F's secondary schools
- 5 Contacting the admissions team
- 6 Pan-London system
- 7 Before you apply**
- 7 Gathering information
- 8 Considering the facts
- 8 Applying for schools outside H&F
- 9 Key dates**

The application process

- 11 The information you need**
- 11 Closing date for applications
- 11 Proof of address
- 13 Change of address/preferences
- 13 Children Looked After (CLA), previously Children Looked After (PCLA) and Internationally Adopted previously Looked After Children (IAPLAC)
- 14 Exceptional need
- 14 Members of the UK Armed Forces and Crown Servants
- 14 Additional forms to complete
- 14 Applications for children living abroad
- 15 Late applications
- 15 Change of preferences
- 15 Use of your personal information
- 15 Fraudulent applications
- 16 Completing your application**
- 16 Guidance on completing your application (paper or online)
- 18 Apply online and save time
- 18 You can apply online in five easy steps
- 19 A step-by-step guide to applying online**
- 21 What will happen next**
- 21 How decisions are made
- 22 Notifying you of the outcome
- 23 Waiting lists
- 23 Appeal arrangements
- 23 Making final arrangements for starting school
- 24 Frequently asked questions**

School information

- 26 Overview**
- 27 Ark Burlington Danes Academy**
- 30 The Fulham Boys School**
- 35 Fulham Cross Academy**
- 38 Fulham Cross Girls' School**
- 41 Hammersmith Academy**
- 45 The Hurlingham Academy**
- 48 Lady Margaret School**
- 52 The London Oratory School**
- 56 Phoenix Academy**
- 59 Sacred Heart High School**
- 63 West London Free School**

Additional information

- 68 Support services**
- 68 Family Hubs
- 68 Children with an EHC plan
- 68 Support for school attendance
- 68 In-year admissions
- 69 Disabled Children's Team
- 69 Educational Psychology Service
- 69 Fair access protocol
- 70 Free school meals and school clothing grants
- 70 Assistance with home-to-school travel
- 71 14 to 19 education options**
- 71 University Technical Colleges (UTCs)
- 71 Sixth form and post-16 education in Hammersmith & Fulham
- 72 Independent schools**
- 72 Independent fee-paying schools

Locations and contacts

- 74 Other authorities**
- 74 Contact details for neighbouring boroughs
- 76 Contact details for diocesan authorities
- 77 H&F's educational establishments**
- 77 School locations
- 80 H&F borough map

Welcome

Dear Parents and Carers

Moving on to secondary school marks a new and exciting chapter – one where your child will grow in independence, develop new interests, and take on fresh challenges. We know that choosing the right school that is the best fit for your child's needs and aspirations is a big decision to make, and can feel both exciting but overwhelming. This guide, alongside our *Hints and Tips* booklet, aims to give you all the information you need to make that choice with confidence.

Here in Hammersmith & Fulham we are proud to have excellent schools – all rated Good or Outstanding by Ofsted – where children are not only supported to achieve academically, but also nurtured to grow in confidence, curiosity, and kindness.

Our secondary schools in Hammersmith & Fulham offer a wide range of opportunities, from academic excellence to creative arts, sports, and technical pathways – and our students consistently make progress above the national average. Behind every success story are dedicated teachers, committed school staff, and supportive communities working together to help each young person thrive.

Competition for places is high, but I'm confident that there is a local secondary in Hammersmith & Fulham that can inspire your child to achieve their best while enjoying a vibrant school community.

Each of our schools has its own strengths and character, so I would encourage you and your child to visit as many as possible. Open evenings and mornings are a chance to explore the facilities, meet the headteacher and staff, and hear directly from current students about their school community. Dates and times of the open evenings and mornings for each school are in this brochure and online.

I know that for families this can be both an exciting and nerve-racking time – particularly if it's your first experience of secondary admissions. I hope this guide gives you clarity and reassurance, and helps you find the place where your child can learn, grow, and enjoy the years ahead.

I wish you and your child the very best as you take this important next step, and I look forward to seeing them thrive in one of our schools.



Alex

Councillor Alex Sanderson

Cabinet Member for Children and Education
Hammersmith & Fulham Council

Introduction

About secondary school admissions

Introduction to H&F's secondary schools

This brochure is for parents of pupils aged between 11 and 16, focusing on issues for those with children transferring from primary to secondary school. It provides information about how and when to apply for a place, explains how admission decisions are made and gives information about each school to help parents decide which schools to apply for.

Hammersmith & Fulham offers a wide range of secondary school options including single-sex Catholic, Church of England and non-denominational schools for both boys and girls and a range of co-educational schools including Academies and Free Schools.

There are three schools in the borough, Fulham Boys' School, Hammersmith Academy and West London Free School (WLFS), that have a priority area. The chances of receiving a place at these schools if you live outside the priority area are reduced. The fact you live in Hammersmith & Fulham or your child may attend a primary school in this local authority area (with the exception of WLFS) will not give you priority in terms of gaining admission to one of our schools.

All the schools in the borough with the exception of the two Catholic schools and Fulham Boys' School and WLFS will, however, consider the allocation of all or a percentage of their places on the basis of proximity to the school and you should consider carefully how far you live from each school and the distance from the school at which the last offer was made in previous years.

Hammersmith & Fulham's two Catholic schools have a reputation that extends beyond the borough and recruit pupils from a wide area. Lady Margaret School and Fulham Boys' School offer places based on church attendance and either on proximity to the school or random allocation, with the former also offering within bands to receive an equal spread of ability, whilst Ark Burlington Danes Academy allocates a percentage of its places to children who are attending Church of England primary schools and specifically to children who attend one of the borough's Ark schools. Further on in the brochure you will find the admission criteria for each school. You must read these to judge the likelihood of your child being offered a place.

It is also important that you visit each school's website to read the full admissions policy. We have provided a link to this on each school's information.



Contacting the admissions team

3rd Floor
145-155 King Street
London W6 9XY

✉ school.admissions@lbhf.gov.uk

🌐 www.lbhf.gov.uk/schooladmissions

☎ 020 8753 1085

Lines are open Monday to Friday
9am to 1pm

About secondary school admissions

It is important to check the admission criteria for each school to assess whether your child is likely to be offered a place. You can also find information on the number of applications each school received for admission in September 2025. The higher the number of applications, the harder it will be to gain a place, so looking at each school's criteria becomes even more important. You need to be aware the outcome can be different each year, depending on the number of applications submitted and the type of cohort that applies (e.g. the number of siblings). This information is therefore provided as a guide to help you to make an informed decision.

When considering your preferences, do not rely solely on what you may have heard about a school's reputation. Visit as many schools as possible on their open days or evenings. Take your son or daughter with you and, if you can, visit the school when it is at work.

Further details about each school can be found on pages 25 to 66. Each school also issues its own prospectus, available directly from the school.

Many of the questions parents raise are answered in this brochure, but if you need further information, the admissions team will be pleased to help.



Pan-London system

Every year over 85,000 pupils living in London transfer to secondary schools, many crossing borough boundaries to do so. All 33 London boroughs, together with councils bordering the capital, use a Pan London system to co-ordinate admissions to their secondary schools.

This co-ordinated admissions system is fairer and means more parents are offered one of their preferred schools at an earlier stage and fewer parents receive no initial offer at all. It is also easier for parents to manage, reducing anxiety for you and your children.

How the system works

Under the Pan-London Co-ordinated Admissions System (PLCAS), all parents must list the schools they want to apply for on their local authority's common application form, ranking them in order of preference. This is important, as potentially only one offer will be made and this will be for the highest-ranked school able to make the offer. This form (either paper or online) is returned to the local authority for the area in which the child lives.

The local authorities taking part in the PLCAS then use a secure computerised system to pass on details of the applications for schools in other areas. They will also co-ordinate the offer of places to make sure no child is offered more than one school place. The decision on whether a place can be offered will continue to be made by the Admission Authority for each school. When a school receives more applications than places available (also referred to as oversubscribed), its published admissions criteria will be used to decide the order in which applicants will be offered places.

Schools will not be informed of where they are listed on the application form or other schools that have been applied for.

Where a child is eligible to be offered a place at more than one school, the local authority will hold the offer for the highest preference on the parents' form and release all other lower preference offers. These places can then be offered to other applicants. Potential offers are exchanged between local authorities until they are in a position to make the single best offer to parents using all available places. All offers will be made on the same day: **2 March 2026**.

Introduction

Before you apply

Gathering information

To make an informed decision about which secondary schools to apply for, you are advised to read the information about the schools in this brochure and research the schools you are interested in applying to.

You are advised to:

- Contact schools you are interested in directly to ask for a copy of their prospectus which will provide you with detailed information.
- Visit schools' own websites to find out more detailed information. If you want to find out about Ofsted reports for Hammersmith & Fulham schools visit www.ofsted.gov.uk.
- Arrange to attend schools' open days and evenings. These can be found in the individual school section.
- Talk to your child's primary school headteacher. They will have experience of previous transfers.
- Contact the admissions team for advice if you are unclear as to how the system works on 020 8753 1085 or email school.admissions@lbhf.gov.uk.



Introduction

Before you apply

Considering the facts

Many schools receive more applications than they have places (also referred to as oversubscribed). To avoid disappointment you should consider whether your child has a realistic chance of gaining a place at your preferred school/schools.

You are advised to consider the following:

- Look at how many applications were made for your preferred school/schools last year compared to how many places were available. This information can be found in the individual school section of this brochure on pages 25 to 66. The same information can be found for schools in other boroughs in their equivalent brochure. It is important to note the pattern of admissions can vary from year to year. As an example, living within the distance in which places were offered in a previous year does not guarantee a place will be offered in this year or future years.
- As indicated above, you can also view the distance maps located on the council website.
- You must read the admission criteria for the school/schools you would like to apply to. The criteria will determine the order of priority for each applicant. As an example, church schools will prioritise applicants who meet the respective faith criteria if that school receives more applications than places available.
- Not all schools give priority to children with siblings already attending the school so you will need to check the admission criteria.
- All church schools (and some Academies and foundation schools outside the borough) have additional supplementary forms to complete, which are available directly from the schools. Supplementary information forms must be returned to the school. The schools in Hammersmith & Fulham that require you to complete supplementary forms will be indicated in the school section.
- Within the schools section you will see how many appeals were submitted for each school and the number that were successful, which will be very few. Be realistic: remember you can state up to six preferences. Even after you have researched the schools and you have decided where to apply, you should not assume your child will be offered a place. You should also consider other schools where you know you will have a good chance of gaining a place. Naming other schools will not affect your chances of being offered a place at a higher-preference school.
- Schools are not informed of other preferences you have made or the order you place them.
- The preferences you make are treated equally. This means no matter where you place a school in your list of preferences, it will be treated in the same way as all other applicants who also chose that school, regardless of where they have placed the school in their list.
- The reason it is so important to list the schools in your order of preference is that when results are returned to the admissions team, we may receive offers for more than one of your preferences. As only one offer can be made to your child, you will be offered the highest school possible from the list you provided. Any offers made lower in your list will be withdrawn and put back in the system. Take special care how you order your preferences.

Applying for schools outside H&F

You may also wish to consider schools outside the borough. Under the PLCAS, Hammersmith & Fulham residents can apply for schools anywhere in London and this will need to be listed on your application. Detailed information about schools outside the borough will be available directly from the schools and from the local authority for the area in which they are located.

The contact details for all London boroughs are provided on pages 74 to 76. Please remember to check the admission criteria to assess whether your child is likely to be offered a place.

Introduction

Key dates

From 1 September 2025

You will be able to apply online at:

www.lbhf.gov.uk/eadmissions

Paper applications will be available from the admissions team on request.

The *Moving on up* brochure will be available online from early September.

31 October 2025

Closing date for applications.

If you are applying online, you will have up until 11.59pm on 31 October to submit your application.

If you are applying via a paper form you will need to ensure it is received by the admissions team by 5pm on 31 October.

2 March 2026

National offer day.

All resident applicants that applied online will receive an email notification during the evening of 2 March.

Resident applicants who made a paper application will be sent an outcome letter in the post on 3 March, unless they provided an email address in which case they will receive an email as well.

16 March 2026

Deadline for successful applicants to accept or decline their school offer.

From 30 March 2026

Schools for which the admissions team coordinate their waiting list will have the list made available. Further offers will be made as a result of withdrawals and late applications for schools with vacancies from this date.

2 May 2026

To ensure appeals are heard by the end of the summer term, appeals managed by the admissions team must be lodged by this date.

You will need to check with voluntary aided schools, Academies and Free Schools as deadline dates may vary.

June/July 2026

Voluntary aided, Academy and Free Schools manage their own appeals and will arrange for this to be heard before the end of term.

The application process



The application process

The information you need

Closing date for applications

The closing date for applications is 31 October 2025. For all the reasons detailed on page 18 it is highly recommended you apply online at: www.lbhf.gov.uk/schooladmissions.

If you would prefer to complete a paper form, you must return it by the closing date to the address shown on the form. If you would like confirmation we have received your application, please indicate this when you submit the form. Make sure you use the correct postage if you return your form through the post. Incorrect postage may delay your application, preventing it from reaching the admissions team by the closing date.

Proof of address

The child's home address provided on your application must be your child's current permanent place of residence on close of application, **31 October 2025**. You must not use a business address, childminder's or relative's address or any address other than your home address. Only in circumstances where the relative or carer has legal guardianship and is the main carer will a different address be considered as the main residence. Evidence will be requested to support this arrangement.

We will not accept possible future addresses as a basis for allocating school places. If you move after submitting your application, you must inform the

admissions team within two weeks of your move so that your application is considered using the correct address for school admission purposes. Any change of address will not be updated until proof has been provided and if you move after **8 December 2025**, your address will not be updated as the process for allocating places would have already started.

Every year there are cases where parents give false information about their home address to get a place at a school. Every effort is made to ensure that this does not happen because this can prevent genuine applicants from obtaining a school place. We will carry out address verifications against local authority records for all applications made by residents of the London Borough of Hammersmith & Fulham.

Where we are not satisfied as to the validity of an address or we consider this to be an address of convenience, further investigations will be conducted. The local authority reserves the right to seek verification of the information parents have given on the application form and withdraw any offer or application made based on inadequate, inaccurate or deliberately misleading information.

Any application found to have misleading information will be invalid and the applicant may be required to make a new application which will be processed as late if the invalid address was detected after the normal closing date of applications.



The application process

The information you need

Address of convenience

An address of convenience is an address named on a school admissions application which is not your child's habitual residence, and which increases the priority that your child will receive for admission to their preferred schools. A child's habitual residence is the place where your child permanently resides and where your family normally lives at the time of application.

It is for the admission authority to determine if, on the balance of probability, the address given on an application is a child's habitual residence.

Some examples of the use of an address of convenience include but are not limited to the following:

- An applicant applies from an address where the child does not ordinarily reside. This includes a business address, a childminder's address or any other address including that of a family member or friend.
- A family purchases a new property or rents accommodation and uses this address to gain a school place, whilst continuing to own or rent an alternative property.
- A family owns a property which is or has previously been used as their home address and apply from another address in order to gain a school place, but still retains ownership of the initial property.
- A family moves to live with someone else, often a relative/friend/partner, and uses this address to gain a school place whilst continuing to own or rent an alternative property.

We will not generally consider an address to be a child's habitual residence if the applicant owns or rents an alternative property that the child previously lived in. Where an applicant still owns or rents an address at which their child previously lived, they must explain and evidence the permanence of their house move. Renting out an owned property or putting it up for sale would not normally deem it unavailable to the family. A property would normally only be deemed unavailable to the family from the date it is sold but this would not alter the outcome of an application for a school place where the decision has already been made.

After consideration of the information provided, if we believe that an address of convenience has been used, the local authority will decide which address to use for allocating a school place.

You will need to provide us with documentary evidence of your address in the form of council tax record. If you are not registered to pay council tax, either because you are not liable or have recently moved, you will be asked to provide:

- A mortgage statement/tenancy agreement
- and **two** of the following:
- Recent utility bill – gas/electricity/water/TV licence
 - Driving licence
 - Entitlement to benefits letter e.g. Child Benefit (pages 1 and 2)/Child Tax Credit/Housing Benefit/Income Support/Jobseekers' Allowance
 - Inland Revenue document
 - Pay slip/P45/P60 (not more than one of these)
 - Car/house insurance certificate
 - Electoral register
 - A letter confirming placement at your address from social services/National Asylum Support Service/United Kingdom Border Agency/housing department.

Any proof of address provided must show your full name and match the details provided at the time of application. Any supporting information not in English language must be accompanied by a certified translation.

If we are not satisfied with the documentation provided, we reserve the right to ask for additional evidence of the address used for your application.

Some parents have multiple council tax liabilities. The council reserves the right to and will investigate in such cases to determine which property the child actually resides and should be the application address.

The application process

The information you need

Shared or joint residence

Where a child lives with parents with shared responsibility, each for part of a week, the address where the child lives is determined using a joint declaration from the parents stating the pattern of residence. If a child's residence is split equally between both parents, then parents will be asked to determine which residential address should be used for admission to school. If the residence is not split equally between both parents, then the address used will be the address where the child spends most of the school week.

If an applicant is unable to provide proofs of address perhaps because they are not, for example, on council tax records or utility bills, the applicant must request the person who is on those records to write to School Admissions to declare their joint residency and responsibility for the child. In some instances, School Admissions may require the adults with responsibility to provide proof of this.

Documentation to confirm the arrangement such as a residence order or other court order may be required. If this is not available or the admissions team is not satisfied with this documentation, Hammersmith & Fulham Council will consider the address of the parent who is in receipt of Child Benefit or if Child Benefit is not being received, the address at which the child is registered with a doctor (GP). You must therefore send us a copy of your latest benefit entitlement notice or your child's medical card. We may also ask for further evidence if required.

Change of address/preferences

The admissions regulations do not permit applicants to change their preferences after **31 October 2025** unless they have moved to a new house. Updated preferences due to change of address can be accepted up to 5pm on **8 December 2025**.

Address changes can only be accepted if suitable new proof of address is provided, and your child is living at the new address by this date. Each case will be considered individually.

If you move after this date or an older child is admitted to one of your preferred schools, changes will not be made until after the offer date. All other new or changed preferences will only be considered after the offer date.

It is your responsibility to let us know about any changes which could impact your child's application for a secondary school place within two weeks of the change. Failure to do so could result in your school place being withdrawn.

If you are considering a change we strongly advise you contact the admissions team on 020 8753 1085 or email school.admissions@lbhf.gov.uk.

Children Looked After (CLA), previously Children Looked After (PCLA) and Internationally Adopted previously Looked After Children (IAPLAC)

In the admission arrangements for all schools, Children Looked After and previously Children Looked After will be: a looked after child, as defined by Section 22(1) of the Children Act 1989, is a child who is (a) in the care of a local authority, or (b) being provided with accommodation by a local authority in the exercise of their social services functions for England and Wales. Priority is also given under this criterion for Children Looked After who ceased to be so because they:

- i) were adopted under Section 46 of the Adoption and Children Act 2002.
- ii) became subject to a child arrangement order under Section 8 of the Children Act 1989, as amended by s12 of the Children and Families Act 2014. Child arrangement orders replaced residence order and any residence order in force prior to 22 April 2014 is deemed to be a child arrangements order, which settles the arrangements to be made as to the person with whom a child is to live.
- iii) became subject to a special guardianship order under Section 14A of the Children Act 1989, which is an order appointing one or more individuals to be a child's special guardian/guardians.
- iv) all references to previously Children Looked After include those children who appear (to the admission authority) to have been in state care outside of England and ceased to be in state care as a result of being adopted. Such children are referred to as Internationally Adopted Previously Looked After Children (IAPLAC) – School Admissions Code 2021.

The application process

The information you need

Exceptional need

All schools have experience in dealing with children with diverse needs. These may be educational, medical and/or social needs. However, in a very few exceptional cases there may be reasons why a child may need to attend a specific school.

If you feel there are exceptional reasons for your child to be considered for a priority placement at a particular school, you must indicate this in the area provided in your application, giving reasons supporting your case. Please be aware not all schools have this criterion in their policy, so it is advised you check this first.

All requests for priority consideration must be supported by a professional, such as a doctor or social worker, who must clarify which school you are making a special case for, the reason why it is necessary for your child to attend this school in particular and the difficulties it will cause your child to attend another school.

It is for you to decide how to support your case and what documents to provide, but these must be submitted by the closing date **31 October 2025**. The admissions team is not responsible for contacting professionals for information about your case and any decision will be based on documents you submit by the closing date.

For own Admission Authority schools, and schools located in other areas, any additional documentation you provide will be passed on for the respective school's attention via the secure Pan-London system.

The notification date is **2 March 2026**. You will not be advised before this date whether your request for priority is agreed. If priority is not granted, your application will be considered against the remaining criteria for the requested school.

It is important to be aware that very few cases are agreed under this category. The Admission Authority must be able to justify awarding priority for a child above other applicants. It will need to be agreed by those making the decision that the professional support provided clearly makes a case that the needs for the child can only be met at the school required as opposed to another local school.

Members of the UK Armed Forces and Crown Servants

For members of the UK Armed Forces and Crown Servants, an official letter confirming intended address or quarters and the date of relocation is required. This can be provided before you have relocated to ensure your application is not disadvantaged.

Additional forms to complete

All Hammersmith & Fulham voluntary aided schools have additional Supplementary Information Forms (SIF) and/or a Priest Reference Form or Certificate of Catholic Practice (CCP) to complete, which are available directly from the schools or at www.lbhf.gov.uk/schooladmissions.

These forms are necessary for the school governors to determine whether applicants meet their faith requirements or other criteria. If you are applying for a place on religious grounds, you will be required to provide proof of your church attendance and/or religious commitment on the SIF.

The SIF and all additional documents required must be returned to the school. The same will apply for church schools located in neighbouring local authorities.

If you name the school on your application and do not complete a SIF, your child will be considered but it will reduce the chance of your child being offered a place. The school will not have any information to consider when judging your application against its admission criteria and, as such, your application will be ranked very low when decisions are made. It is therefore important you complete both forms.

Applications for children living abroad

Applications submitted by resident families working or temporarily living abroad will be processed with all other applicants and must be submitted by the closing date. The address where the child is living at the time of application and at the closing date will be used for the purpose of processing. The applicant must inform the admissions team on their return for the address to be updated. Proof of address and occupancy will be required.

The application process

The information you need

Late applications

If you apply after the closing date without a valid reason, your application will only be considered after the offer date: **2 March 2026**. Your child's name will be added to waiting lists along with those unsuccessful applications considered in the initial allocation round.

If there is an exceptional reason for applying after the closing date and **by 8 December 2025** (for example, you have just moved to the area), it may be possible to consider your application with those that were made on time. Other circumstances will be considered and each case decided on its own merit.

Examples of reasons that **would not** be accepted include failure of a primary school to remind a parent to apply, late return from a family holiday or non-receipt of an application form due to postal issues. You are advised to contact the admissions team as soon as possible if submitting an application after the closing date.

Change of preferences

If you wish to change the order of preference of schools listed on your application form and you applied online, you can log back in to your account to change/add/delete preferences up until the closing date. If you did not apply online, you must email school.admissions@lbhf.gov.uk or write to the admissions team before the closing date.

It is not normally possible to accept any changes after the closing date. If you do want to add preferences or change your order of preferences after this date, you must inform the admissions team as indicated above. In most cases, new or changed preferences will be considered only after all other applications have been considered.

Use of your personal information

The London Borough of Hammersmith & Fulham will handle information you have provided for school admission purposes in line with the GDPR 2018. For more information on this, please visit our *Privacy Notice* on www.lbhf.gov.uk/schooladmissions.

Fraudulent applications

Hammersmith & Fulham Council takes very seriously any attempt to obtain a school place by fraud. All cases are fully investigated and the use of internal and external agencies has improved detection rates. Council officers will carry out unannounced address visits as appropriate.

If you know someone who intends to or has used a false address to get a school place, you can report this confidentially to the admissions team on 020 8753 1085 or email: school.admissions@lbhf.gov.uk.

You do not need to give your name but please provide as much information as possible so we can investigate the matter fully.

If we find a school place was obtained using a false address we will withdraw our offer, even after the child has started school, and give it to the child who was entitled to the place. If it is decided not to remove the offer, normally when the child has been on roll for more than one term, any future sibling link will not apply.

The application process

Completing your application

Guidance on completing your application (paper or online)

The online application is set out in a similar way to the paper form. The following guidance applies to both:

- Naming only the school you most want for your child will not increase his or her chance of being offered a place. It is therefore advised you name further preferences and ones you consider to be realistic options.
- If we receive more than one application for your child, the most recently dated application will be the one we process.
- Because of the demand for places at the most popular schools, your child may not be offered a place at your first preference.

Your child's name

Please write your child's name clearly and use the same name you have registered with your child's primary school.

Your child's date of birth

You should only be applying if your child is currently in Year 6 in primary school and their date of birth is between 1 September 2014 and 31 August 2015. If your child is in Year 6 and does not fall in this birth range, please speak to your primary school headteacher before completing the application.

Your child's home address

The address you give must be your child's permanent address on the closing date for applications. Please see page 13 for more information.

Your child's primary school

You must include the name of the primary school your child currently attends. If your child is being educated at home, please state this in the space provided.

Details of parent or carer

This section needs to be completed by the parent or carer of the child, who will also need to indicate they have parental responsibility. Only one parent needs to complete this section but you can indicate the name of the other parent in the space provided if you wish.

Relationship to child

Please indicate your relationship to the child (e.g. mother, father, grandmother, foster carer).

Children with an Education, Health and Care (EHC) plan

You do not need to complete this application if your child has an EHC plan as there is a separate process that is outlined on page 68 in this brochure. If your child is in the process of being assessed for a statement or EHC plan, please complete this application and make us aware of the circumstances. Doing so will ensure the school that is eventually offered to your child is fully aware before admission and can plan accordingly to be able to meet your child's needs.

Children Looked After

Children Looked After (also referred to as in "Public Care") and children who have been adopted or made subject to a child arrangement order or a special guardianship order immediately after having been Looked After receive priority for admission to school. This category of children includes those that appear to the admissions authority to have been in state care outside of England but ceased to be in state care as a result of being adopted. The child's social worker must submit a letter to the admissions team confirming the legal status of the child and the local authority to which the child is/was in care, quoting the child's full name and current address.



The application process

Completing your application

Exceptional need

All schools have experience in dealing with children with diverse needs. These could be educational, medical and/or social needs. However, in very few exceptional cases, there may be reasons why a child may need to attend a specific school. Please refer to page 14 for further information.

School preferences

You can list up to six state-maintained schools, including any voluntary aided (church) schools, foundation schools, Free Schools and Academies, and any schools in neighbouring local authorities, in order of your preference. Please do not name independent/private fee-paying schools on this form – applications to these must be made separately.

You do not have to name six schools, but it is strongly advised you should name as many preferences as possible and include at least one school where you have a good chance of being offered a place.

You will need to read the admission criteria for the schools to determine the likelihood you have of gaining a place. Applying for only one school will not improve your chances of gaining a place at that school.

Siblings (brothers or sisters)

If your child has a brother or sister who is currently on roll, and will continue to be so, at one of your preferred schools at the time of admission for the child you are applying for, you must include their details where requested. Relatives such as cousins, uncles and aunts are not considered as siblings, even if they are living at the same address.

Please be aware the definition of sibling can vary, so you are strongly advised to check with relevant boroughs or schools for their definition and if the school gives priority to siblings.

Siblings of former pupils

Some schools give priority to siblings of former pupils in their admission criteria. This does not apply to all schools, so check the criteria for the school you are applying to. If you are applying under this criterion please list the name and date of birth of the former sibling and the school they attended in the relevant box.

Children of school staff

Some schools give priority in their admission criteria to children of staff. This does not apply to all schools, so check the criteria for the school you are applying to. Please indicate in the relevant section if you are applying under this criterion, naming the school you are applying for. You must also provide supporting evidence from the school.

Reasons for preference

Please note schools can only use their published admission criteria to decide which children qualify for a place. It is therefore not necessary to give reasons for your preferences. If, however, there are medical or social reasons why your child should attend the school you have named, please indicate these, as outlined above.

Declaration and signature of parent or carer

You must sign your application to certify you have parental responsibility for the child for whom you are applying and the address on the application is the main residence of the child. If you provide any false or misleading information on the application or in supporting papers, or withhold relevant information, it may render your application invalid and lead to the withdrawal of an offer of a place.



The application process

Completing your application

Apply online and save time

If you are an H&F resident you must complete the Hammersmith & Fulham common application to apply for a secondary school place. We recommend you apply online at www.lbhf.gov.uk/schooladmissions.

The council will co-ordinate the admission process with the other 32 London boroughs and neighbouring authorities to ensure no child receives more than one offer of a place at a secondary school in London on **2 March 2026**.

The one offer received will be for the highest-preference school for which your child is eligible. You will have the opportunity to express a preference for **up to** six secondary schools, Academies and Free Schools, including schools outside Hammersmith & Fulham. You must list them in order of preference. This means you should put your first preference (i.e. the school you most want your child to go to) at the top of the list, your second preference below and then continue adding any further preferences you would like to make. It is vital you put your school preferences in the order you would like them.

You can apply online in five easy steps

Why apply online?

- It is quick and easy to do.
- You can log back on to change or delete preferences up until 11.59pm on the closing date (ensure you resubmit your application if making changes).
- You are able to attach additional documents.
- You can register your mobile phone number to receive reminder alerts.
- You will automatically receive a confirmation email once you submit your application.
- During the evening of **2 March 2026** you will receive an email with the outcome of your application. Please wait until you have received the email before logging onto the Pan-London eAdmissions website.
- You will be able to accept or decline an offer of a school place online.



The application process

A step-by-step guide to applying online

To start your online application visit: www.eadmissions.org.uk

Or use the link from the council's website: www.lbhf.gov.uk/schooladmissions

1

If you have used the online system before, log into your account* and proceed to step 2. To create a new account:

- Enter your details providing your name, address and contact information by clicking on **'Register'** in the First Time Visitors area.
- You will be asked to create a password. You will need this to get the outcome of your application.
- Read the privacy policies before ticking the agreement box and click **'Create'** to set up your account. You will receive a validation email to activate your account.
- Next, specify answers for three security questions. This will help you to reset the account if you forget your password.

New Account

Please enter your details below.

Title *

Select your title ▼

First name *

John

Last name *

Smith

Postcode * ⓘ

Please enter your current postcode and then click 'Search'. A valid postcode is less than 8 characters.

Postcode

Search

2

- Click **'Start new application'**.
- Enter your child's details as accurately as possible.
- Apply only for a child born between 1 September 2014 and 31 August 2015.
- **Make sure you enter your permanent address only.** This will be verified against council records.
- If you have twins or triplets, you must remember to create a separate application for each child.
- You will need to specify your relationship to the child and confirm whether you have parental responsibility for them.

Child details

Child's name must be as it appears on their birth certificate

First Name *

First Name

Middle Name

Middle Name

Last Name *

Last Name

Date of Birth * ⓘ

01

09

2014

Gender ⓘ

☐ Boy ☐ Girl

Address * ⓘ

☒ Use your home address

LBHF SCHOOL ADMISSIONS
145 KING STREET
LONDON
W6 9XY

*If you have forgotten your log-in details click on the 'Forgotten username and password' link on the eAdmissions website: www.eadmissions.org.uk

The application process

A step-by-step guide to applying online

3


- Add your school preferences by first selecting the local authority that each school falls within.
- **Make sure that you read the schools' admission criteria.** This will be a guide as to the likelihood of being offered a place at the school you are interested in.
- Select and add the schools you wish to apply for. You can apply for up to six schools.
- For each school selected you will be asked a number of questions (such as whether there is a sibling at the school). Make sure you answer the questions correctly.
- If you tick the medical/social box please ensure you provide additional documents either by attaching them to the application (after submitting) or by sending them to the admissions team.

Add schools


Find schools to add to your application from:

☒ List of schools  ☐ Map  ☐ Keywords 

Select a Local Authority

Hammersmith and Fulham 

Select a school

--- Please select --- 

Start typing a school name

Ark Burlington Danes Academy
Fulham Cross Academy
Fulham Cross Girls' School
Hammersmith Academy
Hurlingham Academy
Lady Margaret School
Phoenix Academy

4

- Check all of the details entered are correct.
- Be sure to review the checklist.
- Read the declaration and the terms and conditions and tick each box to accept them.
- Click the 'Submit Application' button.
You must click the submit button by the closing date of the 31 October 2025. If you do not do this, your application will not be processed.
- Once you have submitted your application you will be able to attach documents.
- You will receive an email confirmation.

Remember:

If you apply online, you must not complete a paper application form

By submitting this form I agree to the following:

- I have read the admissions guidance issued by the Local Authority for each school I have selected.
- I wish to apply for a place at each of the schools named above and have listed these in my order of preference.
- I will keep the Local Authority informed of **any** change of circumstances (e.g. change of address) and failure to do so may make this application invalid or lead to the offer of a place being withdrawn.
- I understand that the Local Authority may take steps to verify any information relating to this application.
- I understand that any false or deliberately misleading information given on this form and/or supporting information may make this application invalid or lead to the offer of a place being withdrawn.
- I understand that the Local Authority where I live is under a duty to protect the public funds it administers and may therefore share the information I have provided in this application within the Local Authority and with other bodies administering public funds, for the detection and prevention of fraud.

- ☒ I have read and accepted the above declaration
- ☒ I have read and accepted the The London Borough of Hammersmith and Fulham **terms and conditions**
- ☒ I agree that The London Borough of Hammersmith and Fulham will use the information I have provided to process my application for the schools listed. When processing the application the Council may share the information with other third party organisations such as the previous school, schools being applied for and the maintaining authority for those schools as well as any other relevant statutory partners.

Submit application

The application process

What will happen next

How decisions are made

The process

The admissions team will process any preferences you have made for Hammersmith & Fulham schools and pass on your child's details to schools that are responsible for their own admissions. If you have applied for schools that are not located in Hammersmith & Fulham, your preference/preferences will be passed to the local authority that maintains those schools. At the same time, the admissions team will receive applications for Hammersmith & Fulham schools from residents in other local authorities. All these operations will be carried out via the Pan-London Co-ordinated Admissions System.

The order of your preferences is not revealed to the schools. This information is only known by your home local authority and the authority where the schools are located.

If any school has more applicants than places available, the published admission criteria will be used to decide the order in which applicants will be offered places. The same process is carried out across London and decisions are made by all Admission Authorities by a common deadline and relayed back to the home local authority. This co-ordinated process eliminates multiple offers and will result in your child being offered the highest potential school you named in your list of preferences (if an offer can be made). Examples are shown in the tables below.

You need to be realistic when deciding your school preferences. The following are examples of why an offer may not be made to your child if a school is oversubscribed:

- Other applicants live closer to the school and distance is the tie-breaker.
- You applied for Church school/schools but other applicants met a higher faith category requirement which meant lower categories in the criteria were not reached.
- You live outside of a priority area for a school. Places can only be offered beyond the area if places are available.
- You live close to the school or met the faith criteria but the tie breaker used is random allocation (lottery).

A breakdown of last year's admissions to each Hammersmith & Fulham school is included in the schools section of this brochure. You will find this information is available for all schools in the respective

local authority brochure, which can be accessed online (neighbouring London local authority website addresses and contact details can be found on pages 74 to 76).

Example 1

Preference rank	School	Criteria met?	Outcome
1st	Hammersmith Academy	Yes	Place offered
2nd	Ark Burlington Danes Academy	No	Withdrawn as higher offer met
3rd	Phoenix Academy	Yes	Withdrawn as higher offer met
4th	Holland Park School	No	Withdrawn as higher offer met
5th	Kensington Aldridge Academy	No	Withdrawn as higher offer met
6th	London Oratory School	Yes	Withdrawn as higher offer met

Example 2

Preference rank	School	Criteria met?	Outcome
1st	Lady Margaret School	No	Placed on waiting list
2nd	Fulham Cross Girls School	Yes	Place offered
3rd	Hammersmith Academy	No	Withdrawn as higher offer met
4th	Hurlingham Academy	Yes	Withdrawn as higher offer met
5th	No preference made	N/A	N/A
6th	No preference made	N/A	N/A

The application process

What will happen next

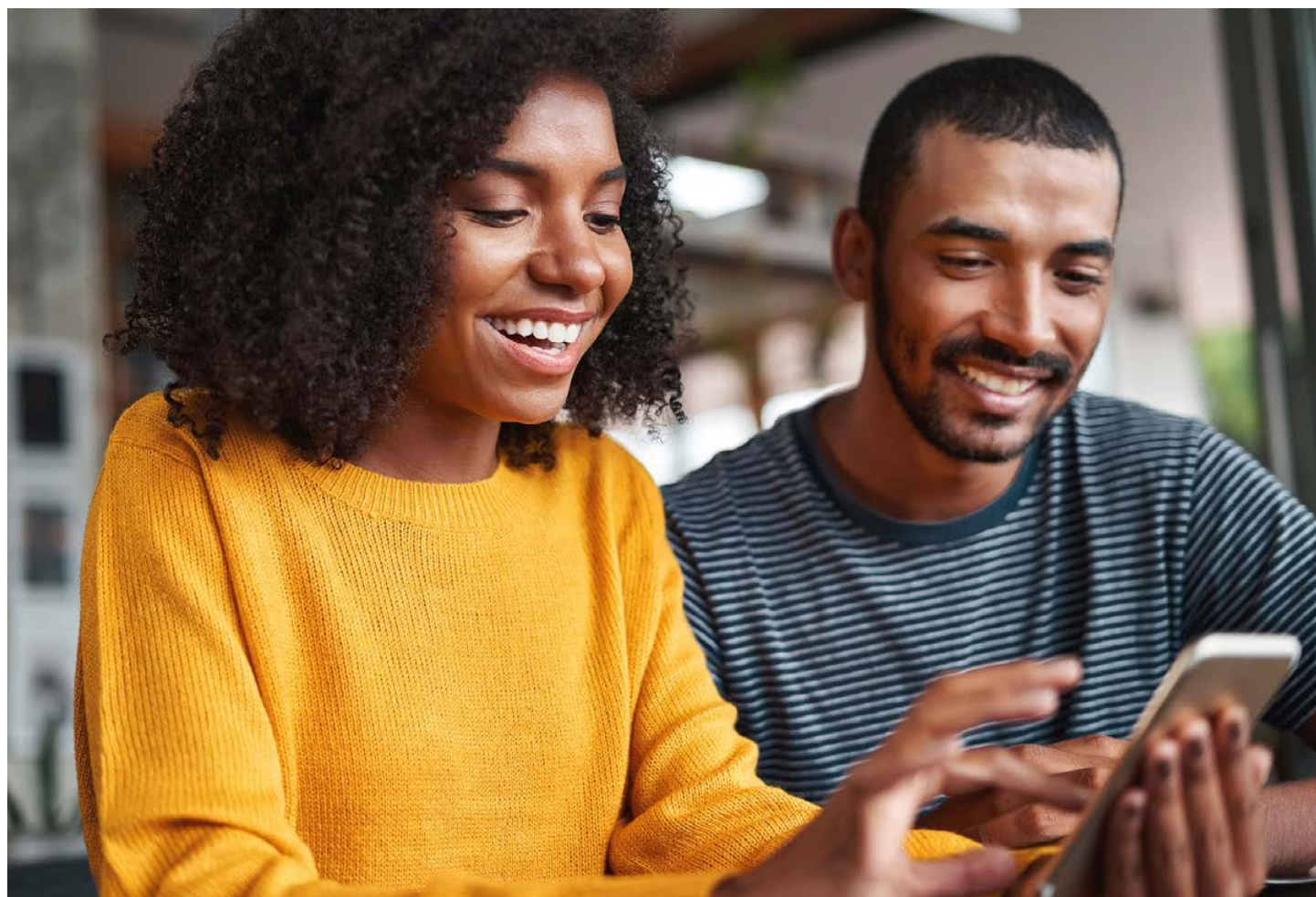
Notifying you of the outcome

If you made your application online, you will be able to log on to the eAdmissions site using your username and password during the evening of **2 March 2026** to view the outcome of your application and accept or decline any offer made.

Letters will only be sent in the post to residents who completed the paper application form, unless an email address was provided. Letters will be sent on 3 March via first class post.

The email notification or letter will tell you the following:

- The name of the school that can offer you a place.
If it has not been possible to offer any of the schools you applied for, the nearest alternative school will be offered to you, if there is one available.
- That any preferences for schools listed lower than the school offered have been withdrawn.
- How to accept the place you have been offered. You should not reject the place unless you have a place secured elsewhere and should indicate the name of the alternative school.
- If you have not been offered one of your school preferences, the reason why and who to contact for further information*.
- Waiting list and appeal information and who to contact for further details.
- The details of schools which have vacancies, if you did not receive an offer for any of your preferences and you do not want to accept the alternative school offered to you.



*The email notification or letter does not go into the detail of why a place could not be offered, and can only inform you your child did not receive a high enough priority in the oversubscription criteria. You will be able to obtain more detailed information from the local authority where the school is located or the school itself if it is its own Admission Authority. Please contact the admissions team in the first instance. They will be able to advise you.

The application process

What will happen next

Waiting lists

Your child's name will automatically be added to the waiting list for any Hammersmith & Fulham schools that could not be offered. Any schools you named as a lower preference than the school offered to your child would have been withdrawn under the co-ordinated arrangements. You will need to re-apply to these schools if you want your child to be included on a waiting list.

If you have not been offered a place at a school in another borough and require waiting list information, you will need to contact the school or the borough that maintains the school.

Waiting lists are ordered in accordance with the published admission criteria for each school and places will be offered to children as vacancies arise with no differentiation between on-time or late applications.

The management of the waiting lists for Ark Burlington Danes Academy, Fulham Cross Academy, Fulham Cross Girls' School, Hurlingham Academy and Phoenix Academy are delegated to the admissions team. Waiting list positions will be available from **30 March 2026**.

Waiting lists for the remaining schools in Hammersmith & Fulham are the responsibility of the respective schools. You will need to contact the school directly for an update of your child's waiting list position.

As a result of vacancies arising, the governors or admissions team on behalf of the school will determine who is offered the next place/places in accordance with the published admission criteria and waiting list ranking. You will be notified of any offer that can be made by the admissions team from **30 March 2026**.

A child's position on the waiting list can go down as well as up. For example, if a new application is submitted and they meet a higher priority against the admission criteria for the school, the waiting list will need to be revised to include the new applicant. The offer of a place does not depend on the length of time your child's name has been on the waiting list and there can never be any guarantee a place will be offered.

You will be contacted at some point during the academic year to indicate continued interest to remain on the waiting list. If you do not respond, your child's name will be removed from the list unless you inform us otherwise. This exercise is carried out to ensure waiting lists only ever include children who would take up an offer for a school if it became available.

Appeal arrangements

You can make an appeal to each school where your application has been unsuccessful. Appeals are heard by an independent panel. The school will explain to the panel why a place could not be allocated to your child. You will then be heard by the panel and will need to show the school's published admission arrangements were not correctly applied or there are special reasons why your child should be given a place even though the school is full.

More detailed information about admission appeals is available at www.lbhf.gov.uk/schooladmissions. Guidance will also be provided with your appeal form should you decide to pursue this right.

If you would like to seek independent advice you may wish to contact the Child Law Advice Service which provides free legal information, advice and representation to children, their families and carers. Please see their website for further details: www.childlawadvice.org.uk/school-admissions or call 0300 330 5485, Monday to Friday, for advice.

Making final arrangements for starting school

The headteacher of the secondary school where your child has been offered a place will invite you to visit the school before the end of the summer term 2026. You will have the opportunity to look around the school and to discuss questions such as school uniform, books, travel arrangements, midday meals and possible financial help.

By the start of the summer holidays, the arrangements for your child's transfer to a new school should have been completed so they can look forward to starting there in September.

The application process

Frequently asked questions

What does the law require?

Of parents:

It is the duty of the parent of every child aged 5 to 16 to ensure the child receives efficient, full-time education, suitable to his or her age, ability or aptitude (and to any special need), either by regular attendance at school or otherwise.

Of local authorities:

It is the duty of every local authority to ensure sufficient primary and secondary schools of appropriate character and with necessary equipment are available to provide all pupils in the area with education suitable to their different ages, abilities and aptitudes.

Does the law guarantee my child a place in the school of my choice?

No, the law states parents may express a preference for any school; however, if more parents express a preference for a school than the number of places available, there has to be an order of priority to decide which children to offer places to. The law allows parents to appeal to an independent panel if their child is refused a place at a school of their preference. Please refer to the section on appeals on page 23 for further information.

Will a school know where I listed it in my application?

No, all applications are treated equally against each school's published admission criteria. Schools are not provided with the preference order as it has no relevance to the decision-making process.

If I decide I prefer a school I listed lower than the school I was offered, can I be considered for a place?

Any preferences that are listed lower than the school offered are automatically withdrawn, so any lower preferences will no longer exist. Any requests after offers have been made for lower preferences will be treated as a new late application. If the school has a vacancy, then it will be possible to offer your child a place and withdraw the original offer made to you. If the school is full your child's name will be added to the waiting list.

Do I have priority for a school place in the borough I live in?

No, it is against the law for local councils to give priority to their own residents.

Can I change or withdraw my preferences after I have submitted my application?

Once you have submitted your application, you can change the order of your preferences and the schools you have listed up until the closing date. Changes cannot be made to your application after the closing date except in exceptional circumstances.

The distance you have calculated from my home to the school is further away than the distance I have calculated on a measuring system I used on the internet. What do I do?

The local authority's geographical measuring system is used for calculating distances from home to school. Distances measured by other means (e.g. private car, pedometer or on the internet) are likely to be calculated on a different basis and should not be relied upon as evidence the local authority's distance calculation is incorrect. The local authority's measuring system is designed to be precise, reliable and consistent, and is used for all applications.

The school I have applied for has random allocation to decide who is offered a place. How does this work?

Some schools use random allocation instead of distance in order to determine a rank number order when there are more applications than places available. This may also be referred to as a lottery or ballot. Schools can decide how they apply this method but it must be supervised by someone independent of the school. This can be an individual or an external organisation.

When places become available, random allocation must be used each time to determine the next offer. This will mean that there is no ordered waiting list for schools that use random allocation. Each time random allocation is applied, a record is kept that will show the rank number given to the applicants.

School information



How to use this section

This section contains basic information for each school and a summarised version of the oversubscription criteria. You are advised to read the full admission arrangements for each school you are interested in applying to. These can be obtained directly from the respective school, their website and the local authority's website.

Common definitions

To avoid repetition, the following common definitions will apply to each school and academy in this section (unless indicated otherwise in the school's criteria).

Please note:

For all schools included in this brochure, children with an Education, Health and Care (EHC) plan that name the school will be allocated a place before any other allocations are made. Further information can be found on page 68.

Children Looked After (also referred to as in "Public Care")

Children in care of the local authority and children who have been adopted or made subject to a child arrangement or a special guardianship order immediately following having been looked after. This includes children adopted from overseas who appear to the admissions authority as having been looked after but ceased to be so because they were adopted. The child's social worker must submit a letter to the admissions team confirming the legal status of the child and the local authority to which the child is/was in care, and quoting the child's full name and current address.

Siblings (brothers and sisters)

Children already attending the school who will continue to do so on the date of admission of the applicant. This includes half-brothers or half-sisters, adopted brothers or sisters, stepbrothers or stepsisters or the children of the partner of the parent or carer, provided they live at the same address as the applicant.

Distance from home to school

Unless indicated otherwise in the individual admission criteria for each school, distances are calculated using a straight line (as the crow flies) measurement from the child's home "address point" (determined by Ordnance Survey data) to the main school gate (as determined by Hammersmith & Fulham Council using its computerised measuring system).

The child living closest to the school will receive the highest priority; accessibility by car or public transport will be disregarded. If applicants share the same address point (for example, those who live in the same block of flats or shared house), priority will be given to those who live closest to the ground floor, then by ascending flat number order. Routes are measured to four decimal places (if necessary).

If, in the unlikely event two or more applicants live exactly the same distance from the school, the offer of a place will be decided by random allocation, which will be carried out independently of the school.

Exceptional need

If this priority forms part of the school's admission criteria, the governors may, on an individual basis, give priority to applicants who can demonstrate admission to the school is necessary on the grounds of professionally supported educational, medical and/or social need and that only this school can meet this need. Parents/carers must supply details of any such special factors at the time of the original application, together with recent supporting documentation. Such applications will not be considered without professional support – such as a letter or report from a doctor, consultant or social worker. Further guidance can be found on page 14.

Children from multiple births (e.g. twins, triplets)

Each school must set out in its admission arrangements how it considers applicants from multiple births when the admission limit may be exceeded to admit all children. In most cases, places will be offered to all children. You are, however, advised to check the full policy for the school/schools you are applying for if this is a concern for you as different rules may apply.

School information

Ark Burlington Danes Academy

Wood Lane
London W12 0HR

☎ **020 8735 4950**
✉ **bda.school@burlingtondanes.org**
🌐 **www.burlingtondanes.org**

Type of school
Academy, mixed

DfE number
205 6905

Nearest Tube station
White City (Central Line)

Ages
11 to 18

**Number of pupils to be
admitted in September 2026**
120

Bus routes
220, 7, 272, 72

Principal
David Carr



School information

Ark Burlington Danes Academy

About our school

At Ark Burlington Danes Academy (BDA) we are committed to our vision of 'we will be the ones to make our world a better place.'

Our culture and values act as the multiplier to make every decision, action and interaction at BDA special. Students at BDA will achieve outcomes that enable them to compete with anyone in society, regardless of any challenges, by taking ownership of their actions and understanding that these will determine their future success.

All staff at BDA strive to **Keep Learning** so that they can be the very best professional and therefore ensure our students achieve anything they set their mind to. BDA **Aims High** for all, and we will make no apologies for that.

Our core routines and participation strategies drive learning in the classroom and student success.

Having been founded as a Christian charity school in 1699, we are proud of our heritage and this Christian ethos permeates all aspects of our school life.

Our unique curriculum offer encompasses an academic range of subjects and an enrichment offer which takes advantage of our unique sports, arts and music facilities as the largest school site in central London.

Our carefully curated personal development programme helps our students to develop their confidence, resilience and character, enabling them to become the leaders that really do 'make our world a better place.'



For more detailed information about the school, please visit their website: www.burlingtondanes.org

Apply online: www.lbhf.gov.uk/schooladmissions

Ark Burlington Danes Academy

Admission criteria

The below criteria has been summarised and you will need to refer to the school's website for the full admission policy and arrangements: www.burlingtondanes.org/about/policies-reports#policies

You can also obtain further information by visiting the school on the dates set out below.

Key: A single asterisk (*) used below denotes that common definitions can be found on page 26.

After the allocation of children with an EHC plan*, the admission criteria will be applied in the following order of priority:

1. Children Looked After or previously Looked After*.
2. Children of staff at the school where there is a demonstrable skill shortage – children of members of staff will have priority in the oversubscription criteria if the staff member is filling a post for which there is a demonstrable skill shortage. Ark Schools is required to approve the principal's designation of such posts and confirm the assessment that a member of staff appointed meets the requirements of the shortage. Priority will be limited to one place for each form of entry in any year.
3. Siblings*.
4. Up to 25 per cent of the remaining places will be allocated to children who attend Church of England primary schools in the London boroughs of Brent, Ealing, Hammersmith & Fulham, Kensington and Chelsea and Westminster and, where there are more applications in this category than places, places will be offered on distance*.
5. Up to 25 per cent of the remaining places will be allocated to children who attend the Ark Academy Trust schools in the borough.
6. Children of staff in the school – where there is no demonstrable skill shortage, priority may be given where the academy is oversubscribed to a child of a person who will have been employed in the academy for two or more years at the time the application for admission is made. Priority will be limited to one place for each form of entry in any year.
7. Distance from home to school*.

Tie-break

If any Ark school is unable to distinguish between applicants using the over-subscription criteria, places will be offered via a random draw which will be supervised independently of the school.

Sixth form

Please see the school website for information on applying to sixth form:

www.burlingtondanes.org/about/welcome/sixth-form

How places were offered in 2025

Total applications submitted: 260

3 places allocated to pupils with an EHC plan.

All on-time applicants who applied were offered a place.

Appeals information

2025: 0 appeals

2024: 0 appeals

2023: 0 appeals

Key dates

Open evening

Thursday 2 October at 4.30pm to 7pm

Open mornings

Thursday 2 October, Friday 3 October,
Thursday 9 October and Friday 10 October,
at 9.30am to 10.30am

School information

The Fulham Boys School

**532 Fulham Road
London SW6 5BD**

☎ 020 7381 7100
✉ info@fulhamboysschool.org.uk
🌐 www.fulhamboysschool.org

Type of school

Free School, Church of England,
boys

Ages

11 to 18

Headteacher

David Smith

DfE number

205 4001

Number of pupils to be admitted in September 2026

130

Nearest Tube stations

Fulham Broadway (District line);
Parsons Green (District line);
West Brompton (District Line
and Overground)

Bus routes

211, 295, 28, 14, 424, 414



School information

The Fulham Boys School

About our school

The Fulham Boys School (FBS) is a fully comprehensive school with a strong and distinctive ethos founded on three core pillars: Boys, Faith and Enterprise.

Boys – we plan our offering from lessons to lunchtime to sports afternoon to meet the needs of boys. Our school day is longer than most schools with a busy programme of sport and co-curricular options.

Faith – boys of all faith are welcome at FBS and we ask everyone to think about Christian values and question.

Enterprise – we encourage boys to be enterprising, nurturing inquisitiveness as well as supporting boys

with business and social enterprise so they are well prepared for the next stage of their lives.

We are an academic school with high levels of student progress and achievement. In 2023, our GCSE results put us in the top 8 per cent of schools nationally and our boys performed well above the national average in English and Maths.

At its heart FBS is a community school and our success relies on the support of all parents either through giving your time, attending events or donating funds to the school.



For more detailed information about the school, please visit their website: www.fulhamboysschool.org

Apply online: www.lbhf.gov.uk/schooladmissions

The Fulham Boys School

Admission criteria

The below criteria has been summarised and you will need to refer to the school's website for the full admission policy and arrangements: www.fulhamboysschool.org

You can also obtain further information by visiting the school on the dates set out below.

Key: A single asterisk (*) used below denotes that common definitions can be found on page 26. A double asterisk (**) denotes that an admissions zone has been identified for both faith and open places as two miles radius of the school's permanent location at Heckfield Place SW6 5BD.

After the allocation of children with an EHC plan*, the admission criteria will be applied in the following order of priority:

1. Children Looked After or previously Looked After*.
2. Founders' children.
3. Children of staff.
4. Sports aptitude – up to 8 places.

After the above, the remaining places will be split 50-50 between Christian and open places.

Christian faith places

If the Christian faith places are oversubscribed, applications will be prioritised in the following order:

- a. Boys applying for a Christian faith place with a sibling on the date of admission.
- b. Boys who themselves or their parents are practising members of the Anglican Church residing within the priority admission zone**.
- c. Boys who themselves or their parents are practising members of other Christian churches and resident within the priority admission zone**.

Open places

If the open places are oversubscribed, applications will be prioritised in the following order:

- a. Boys with a sibling in the school on the date of admission.
- b. Boys who are resident in the priority admission zone**.
- c. Other boys.

Tie-break

If either category remains oversubscribed after the application of the above criteria, places will be assigned within that category by random allocation. The process will be conducted independently by computer program.

Additional forms to complete

Faith Application and Sports Aptitude application to be returned directly to the school.

School information

The Fulham Boys School

How places were offered in 2025

Total applications submitted: 617

5 places allocated to pupils with SEN/EHC plans.

Criterion	Offers
CLA priority	2 offers
Children of staff	2 offers
Sports aptitude	5 offers

Faith places

Criterion	Offers
Faith siblings	4 offers
C of E in priority zone	18 offers
Christians in priority zone	29 offers
Other Christians outside priority zone	2 offers

Open places

Criterion	Offers
Open siblings	22 offers
Open places in priority zone	31 offers

Appeals information

2025: Please refer to the school

2024: 3 heard, please refer to school for further details

2023: 4 heard, please refer to school for further details

Sixth form admissions

The school welcomes applications from external applicants. For information on applying to sixth form visit: www.fulhamboysschool.org

Key dates

Open evening

Thursday 25 September

Open day

Thursday 2 October

Faith application deadline

Friday 31 October

Sports aptitude application deadline

Friday 3 October

Sports aptitude test date

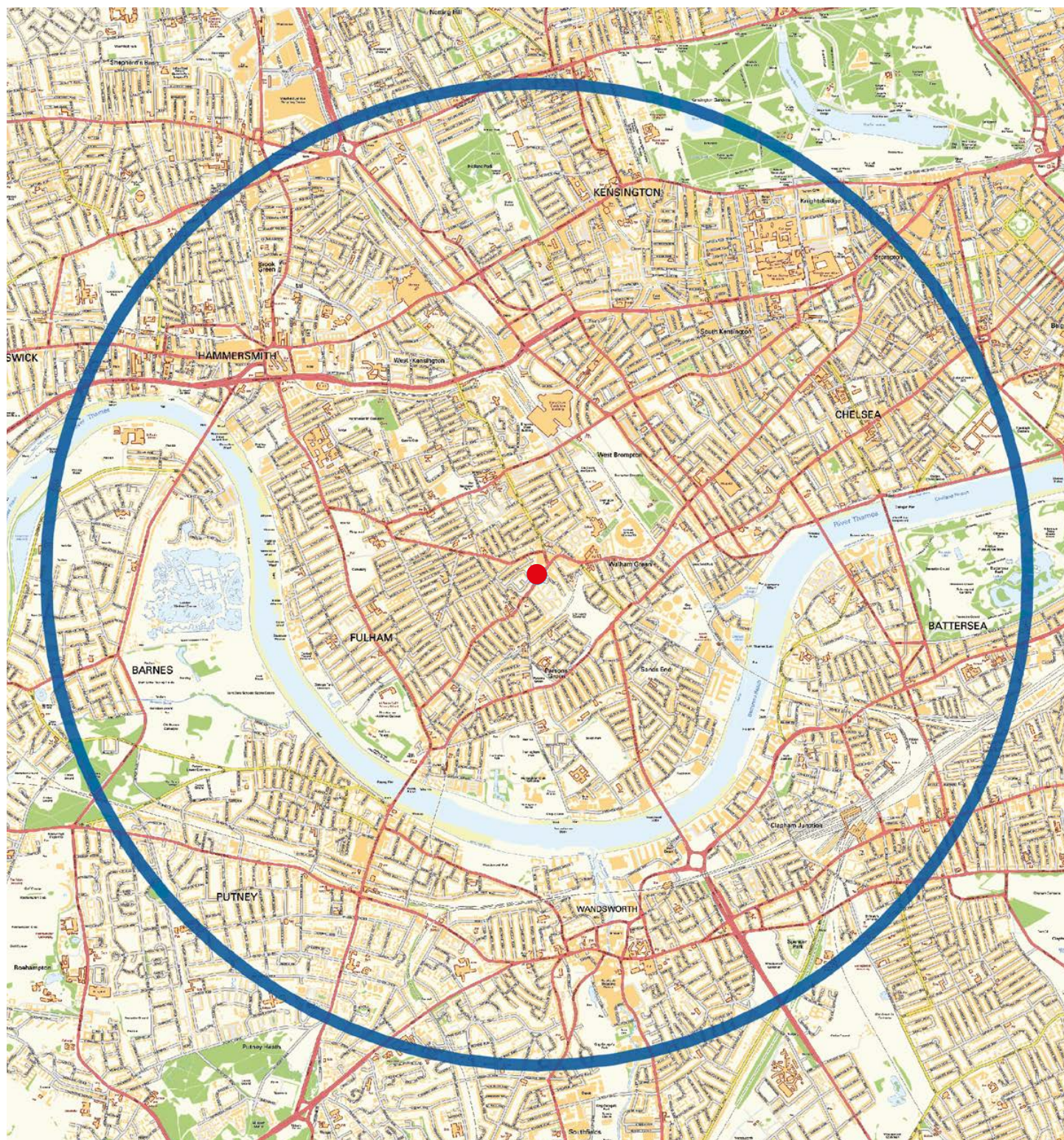
Please refer to the school's website for more information

School information

The Fulham Boys School

The Fulham Boys School priority admission zone map

- The thick blue line denotes the boundary of the priority admission zone.
- The site of The Fulham Boys School is marked by a red dot in the centre of the map.



School information

Fulham Cross Academy

Kingwood Road
London SW6 6SN

☎ **020 7381 3606**
✉ **fcaschool@fulhamcross.net**
🌐 **www.fulhamcrossacademy.co.uk**

Type of school

Academy, mixed

Ages

11 to 19

Executive Principal

Mrs Sally Brooks MA, NPQH, NPQEL

Head of School

Catherine Johnson NPQH

DfE number

205 4106

Number of pupils to be admitted in September 2026

125

Specialism

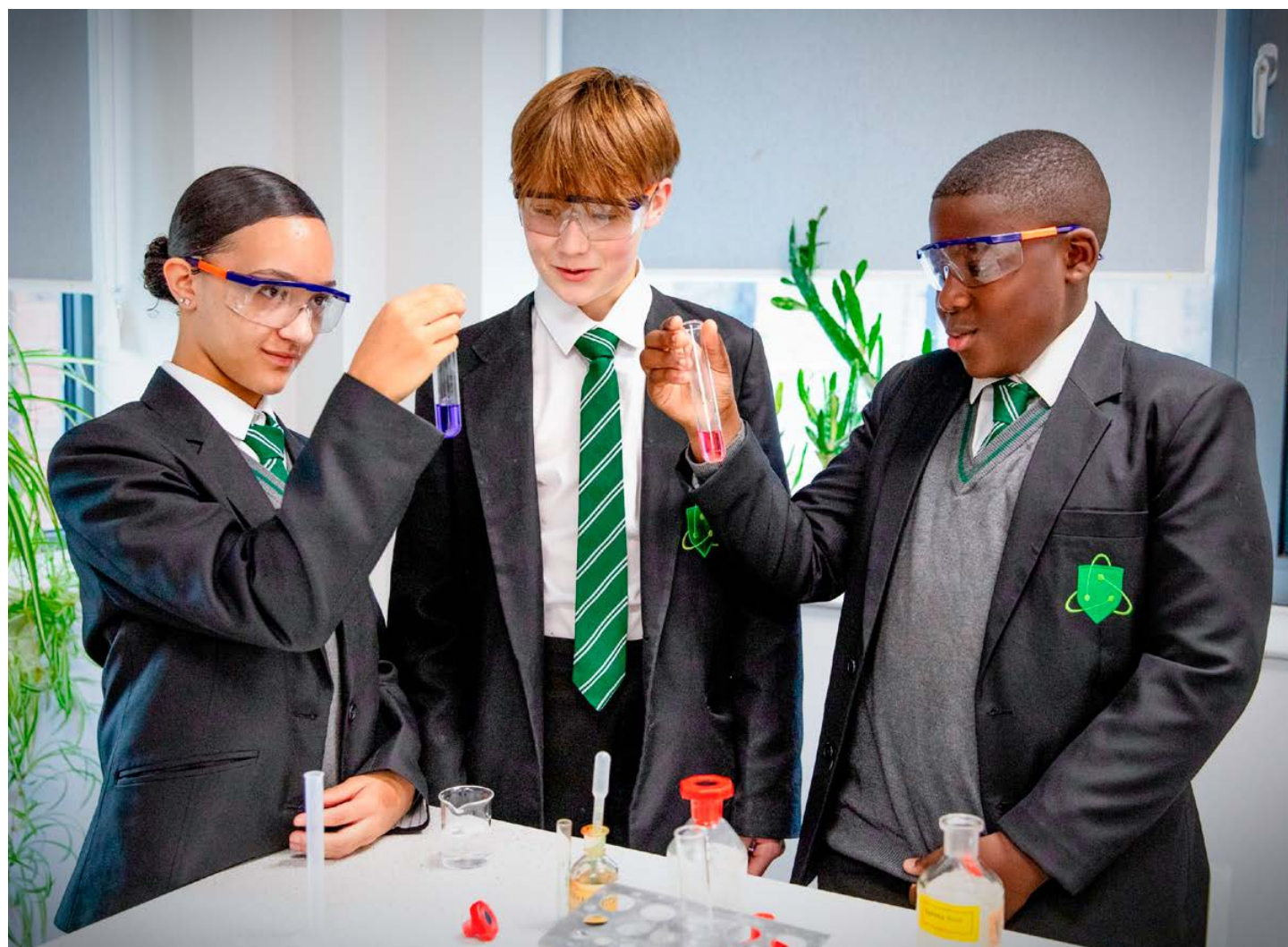
Science, Technology,
Engineering and Maths

Nearest Tube stations

Parsons Green, Putney Bridge,
Fulham Broadway (District
Line); Barons Court (District and
Piccadilly Lines); Hammersmith
(Hammersmith & City, Circle,
District and Piccadilly Lines)

Bus routes

74, 220, 430, 295, 190, 211,
424, 14, 414



School information

Fulham Cross Academy

About our school

Fulham Cross Academy (FCA) is a vibrant and forward-thinking school where students thrive. We adopt a positive relationship approach to education, firmly believing that interpersonal relationships, combined with academic challenge, lead to the best possible outcomes and experiences for our students.

As a specialist STEM school, we champion Science, Technology (including Computer Science), Engineering, and Mathematics. At the same time, we are deeply committed to the humanities, the arts, and physical education, all of which are essential to our broad and balanced curriculum. Our innovative and exciting curriculum leads to excellent academic outcomes, ensuring that students are both challenged and inspired throughout their learning journey.

Our students excel both in the classroom and through

a diverse programme of enrichment opportunities. Our goal is to foster both academic achievement and intellectual curiosity, equipping our students to become confident, capable, and well-rounded individuals.

Our facilities are among the best in west London. The historic Grade II-listed Kingwood Building reflects our proud heritage, while our state-of-the-art Science building represents our commitment to contemporary innovation. With extensive outdoor space and exciting new developments such as a state-of-the-art gym and canteen on the horizon, we offer an outstanding environment for learning and growth.

Choosing a school is about finding the right fit, and we're confident that once you walk through our doors, you'll experience what makes us truly special – we call it the FCA Way. Please come and see us for yourself.



For more detailed information about the school, please visit their website: www.fulhamcrossacademy.co.uk

School information

Fulham Cross Academy

Admission criteria

The below criteria has been summarised and you will need to refer to the school's website for the full admission policy and arrangements: www.fulhamcross.net

You can also obtain further information by visiting the school on the dates set out below.

Key: A single asterisk (*) used below denotes that common definitions can be found on page 26.

After the allocation of children with an EHC plan*, the admission criteria will be applied in the following order of priority:

1. Children Looked After or previously Looked After*.
2. Siblings* already on the roll within any of the Fulham College Academy Trust schools: Fulham Cross Academy, Fulham Cross Girls' and the Fulham Cross Sixth Form.
3. Distance from home to school*.

Twins, triplets and multiple births

Twins, triplets and multiple birth children will be considered as individuals alongside all other applicants. Every effort will be made to accommodate twins or multiple birth children within the same school, even if this means that the published admission number will be exceeded.

Sixth form

Please see the school website for information on applying to sixth form: www.fulhamcross.net

How places were offered in 2025

Total applications submitted: 281

7 places allocated to pupils with SEN/EHC plans.

All applicants were offered a place.

Appeals information

There have been no appeals lodged over a three-year period.

Key dates

Open evening

Monday 13 October at 4pm to 7pm

Open mornings

Monday 13 October to Friday 17 October, at 9am to 10am

Visit the school's website to sign up to their Open Event mailing list and be the first to know when you can book onto their autumn events

School information

Fulham Cross Girls' School

Munster Road
London SW6 6BP

☎ **020 7381 0861**
✉ **fcgsschool@fulhamcross.net**
🌐 **www.fulhamcross.net**

Type of school

Academy, girls

Ages

11 to 16

Executive Principal

Mrs Sally Brooks MA, NPQH, NPQEL

Head of School

Ms Victoria Tully BA (Hons), PGCE,
NPQH, MA

DfE number

205 4315

**Number of pupils to be
admitted in September 2026**
125

Nearest Tube stations

Hammersmith (Hammersmith
& City, Circle, District and
Piccadilly Lines); Fulham Broadway
(District Line); Barons Court
(District and Circle Lines)

Bus routes

74, 220, 430, 295, 190, 211,
424, 14, 414



School information

Fulham Cross Girls' School

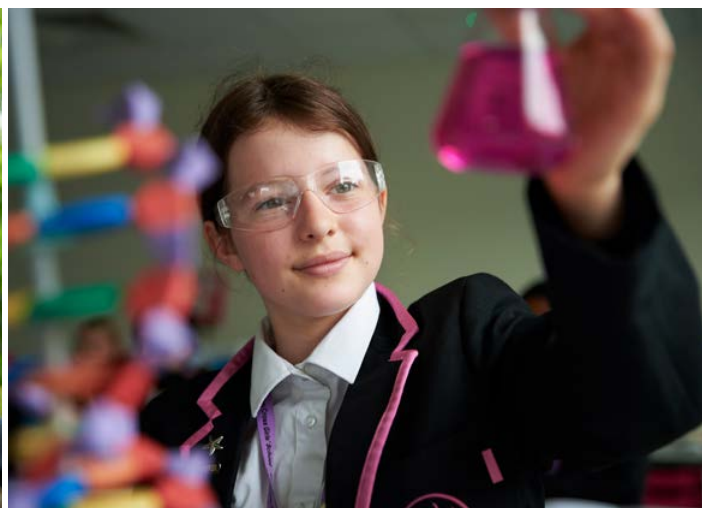
About our school

Fulham Cross Girls' School is an academically rigorous girls' school with high expectations and exceptional GCSE results year after year. We are committed to 'empowering tomorrow's women', and research shows that: "Girls do better, in terms of educational attainment, at single-sex schools" (Dr Alice Sullivan, University of London). At Fulham Cross Girls' School this is evidenced by the girls' high take up of Science A Levels, Maths, and other traditionally 'boy dominated' subjects.

Our Key Values – 'The Fulham Cross Four' are **Excellence, Integrity, Courage, and Community**. These can be seen in our very high quality teaching

and learning, excellent behaviour and our fully rounded extracurricular offer, and our commitment to contributing positively to our local and global communities.

Our Personal Development and Careers programmes are recognised as outstanding, and we develop employability skills such as leadership, communication and resilience to ensure that our bright, confident young women have more than a strong set of results behind them when they are ready to take their next steps. You are welcome to come and visit to see for yourselves – please sign up for our Open Events on the school website.



For more detailed information about the school, please visit their website: www.fulhamcross.net

School information

Fulham Cross Girls' School

Admission criteria

The below criteria has been summarised and you will need to refer to the school's website for the full admission policy and arrangements: www.fulhamcross.net

You can also obtain further information by visiting the school on the dates set out below.

Key: A single asterisk (*) used below denotes that common definitions can be found on page 26.

After the allocation of children with an EHC plan*, the admission criteria will be applied in the following order of priority:

1. Children Looked After or previously Looked After*.
2. Siblings* already on the roll within any of the Fulham Cross Academy Trust schools; Fulham Cross Academy, Fulham Cross Girls' and the Fulham Cross Sixth Form.
3. Up to 12 girls who have applied under the languages aptitude scheme (visit the school's website for information on how to apply under this scheme).
4. Distance from home to school*.

Twins, triplets and multiple births

Twins, triplets and multiple birth children will be considered as individuals alongside all other applicants. Every effort will be made to accommodate twins or multiple birth children within the same school, even if this means that the published admission number will be exceeded.

Sixth form

Please see the school website for information on applying to sixth form: www.fulhamcross.net

How places were offered in 2025

Total applications submitted: 221

1 place allocated to pupils with SEN/EHC plans.

All applicants were offered a place.

Appeals information

2025: 1 heard, 0 upheld

2024: 1 heard, please refer to school for further details

Key dates

Open evening

Monday 6 October at 4pm to 7pm

Open mornings

Monday 6 October to Friday 10 October, at 9am to 10am

Visit the school's website to sign up to their Open Event mailing list and be the first to know when you can book onto their autumn events

Language Aptitude Tests for the Mandarin Excellence Programme

Tuesday 14 October and Thursday 21 October, at 3.30pm. Results confirmed by Friday 24 October

School information

Hammersmith Academy

**25 Cathnor Road
London W12 9JD**

☎ 020 8222 6000

✉ info@hammersmithacademy.org

🌐 www.hammersmithacademy.org

Type of school

Academy, mixed

Ages

11 to 18

Headteacher/Principal

Gary Kynaston BEd, MA, NPQH

DfE number

205 6906

Number of pupils to be admitted in September 2026

140

Specialism

Creative & Digital Media and IT

Nearest Tube stations

Goldhawk Road (Hammersmith
& City Line) Ravenscourt Park
(District Line)

Bus routes

94, 207, 228, 237, 260, 266,
283, 607



School information

Hammersmith Academy

About our school

We are committed to developing future citizens who have the ambition, confidence and skills to thrive in the real world – no matter their background – and to achieve fulfilling and economically successful careers.

We create the conditions for students to excel – both academically and in their personal development. Our focussed, academically rigorous curriculum is always taught by specialists. This provides the challenge and depth needed to stretch students intellectually, and develop the personal skills and cultural experiences that form a strong foundation for lifelong success.

Our GCSE and A-Level results open doors. Students progress to top universities, including Oxbridge and those in the Russell Group, and gain places on some of the UK's most competitive apprenticeships (including degree apprenticeships) programmes. Our exceptional

careers and university support programme connects students to leading employers, universities and cultural institutions. Access to mentoring, workshops, internships and personalised guidance means our students gain more real-world insight and confidence.

Through our partnership with two of the country's leading independent schools – St Paul's School and St Paul's Girls' School – our students benefit from a rich programme of masterclasses, shared teaching, and cultural events that inspire excellence and broaden horizons. These links, made possible through our sponsor, the Mercers' Company, enhance our culture of aspiration, excellence and opportunity.

The academy is also sponsored by The Worshipful Company of Information Technologists whose business and expertise shapes our governance.



For more detailed information about the school, please visit their website: www.hammersmithacademy.org

Apply online: www.lbhf.gov.uk/schooladmissions

School information

Hammersmith Academy

Admission criteria

The below criteria has been summarised and you will need to refer to the school's website for the full admission policy and arrangements: www.hammersmithacademy.org/admissions

You can also obtain further information by visiting the school on the dates set out below.

Key: A single asterisk (*) used below denotes that common definitions can be found on page 26.

All students who are applying for a place at Hammersmith Academy for Year 7 will be required to take a fair banding test. The purpose of this non-verbal reasoning test is for the academy to achieve a genuine spread of ability. The results of the test will place the students in one of five ability bands. After the allocation of children with an EHC plan*, the admission criteria will be applied in the following order of priority:

1. Children Looked After or previously Looked After*.
2. Children of staff at Hammersmith Academy.
3. Distance from the academy*.

Tie-break

In the unlikely event of a tie between twins living at the same address, the Academy Trust will admit both and not offer any further places until numbers fall back to the admission number of 140.

If all applications within a band have been exhausted, the remaining places will be offered to siblings within the next highest band based on proximity.

Additional forms to complete

Forms are available from the academy website or directly from the academy office. Please continue to visit the school's [Fair Banding web page](#) for published dates and the registration form.

Sixth form

The academy will aim to admit up to 150 students into Year 12 each year, who meet the published admissions criteria for sixth form entry, both from the academy's own Year 11 and from external schools. Please see the school website for information on applying to sixth form: www.hammersmithacademy.org/about-us/sixth-form

How places were offered in 2025

Total applications submitted: 598

9 places allocated to pupils with SEN/EHC plans.

Criterion	Offers
Band A	28 offers (including 6 siblings), last offer up to 1.051 miles straight-line outside the priority area
Band B	28 offers (including 1 CLA and 1 sibling), last offer up to 0.688 miles straight-line to a sibling outside the priority area
Band C	28 offers (including 1 staff child and 2 siblings), last offer up to 0.658 miles straight-line outside the priority area
Band D	28 offers (including 4 siblings), last offer up to 0.850 miles straight-line to a sibling outside the priority area
Band E	28 offers (including 9 EHCP), last offer up to 0.393 miles straight-line inside the priority area

School information

Hammersmith Academy

Appeals information

2025: 11 heard, 2 upheld

2024: 5 heard, 0 upheld

2023: 10 heard, 2 upheld

Key dates

Open evening

Tuesday 30 September at 4pm to 7.30pm

Open mornings

Thursday 9 October and Tuesday 14 October,
at 9am to 11am

Sixth form open evening

Tuesday 7 October at 4pm to 7pm

Booking is required to attend each event,
please refer to the school's website

Banding test

22 November and 29 November. Registration is
not required (you will be invited based on your
application to secondary school)

If you have any questions regarding
the fair banding tests, please email:

admissions@hammersmithacademy.org

School information

The Hurlingham Academy

Peterborough Road
London SW6 3ED

☎ **020 7731 2581**
✉ **info@thehurlinghamacademy.org.uk**
🌐 **www.thehurlinghamacademy.org.uk**

Type of school
Academy, mixed

DfE number
205 4002

Nearest Tube station
Parsons Green (District Line)

Ages
11 to 16

**Number of pupils to be
admitted in September 2026**
135

Bus routes
28, 295, 424, C3, 22, 44

Principal
Leon Wilson



School information

The Hurlingham Academy

About our school

We are rightly proud of our school and the community that we have built here. We are officially rated 'Outstanding' by Ofsted and we are also over-subscribed in every year group.

Every year we see our students attain outstanding GCSE results that are well above national average and then go on to study at top further education institutions across London both in the state and independent sectors. We have a scholarship programme with the prestigious Istock Place School and every year three of our students are awarded fully-funded scholarships to study A Levels there.

We are a small school and benefit richly from being a close, diverse and respect-based community in which pupils are known and nurtured individually. Pupils are happy and safe at The Hurlingham Academy

and consequently they flourish as learners and make exceptional progress.

We also take our responsibility and commitment to nurturing our students seriously and seek to do this strategically and carefully. We invest considerable time and thought into creating meaningful and impacting enrichment, PSHCE and pastoral programmes. We want our students to think deeply about their own personal development and explore their role as active citizens in this ever changing and increasingly complex world. We nurture them to embrace their own individual responsibility to their communities and their own personal commitments to bettering them.

We have a year-round open-door policy and parents are welcome to come in and visit us without an appointment. Please take us up on this!



For more detailed information about the school, please visit their website: www.thehurlinghamacademy.org.uk

School information

The Hurlingham Academy

Admission criteria

The below criteria has been summarised and you will need to refer to the school's website for the full admission policy and arrangements: www.thehurlinghamacademy.org.uk

You can also obtain further information by visiting the school on the dates set out below.

Key: A single asterisk (*) used below denotes that common definitions can be found on page 26.

After the allocation of children with an EHC plan*, the admission criteria will be applied in the following order of priority:

1. Children Looked After or previously Looked After*.
2. Exceptional need*.
3. Siblings*.
4. Children of staff.
5. Distance from home to school*.

The Grammar Stream

What is a Grammar Stream?

A Grammar Stream is a group of 28-32 highly academically able students. They will be taught a more challenging and in-depth curriculum from Year 7 onwards, as well as having access to a programme of extracurricular opportunities that will put them on the path to the world's best universities.

Why are we creating a Grammar Stream?

The Hurlingham Academy is, and always will be, a comprehensive school. However, we recognise that many of our students join us having performed at the highest level in primary school and require an additional level of challenge to reach their potential.

The rationale for the Grammar Stream is to ensure that our most academically capable students have the opportunity to compete at the highest level at A-level, at university and in the job market, alongside their grammar school and privately educated peers. Whilst they are at The Hurlingham Academy, the foci for Grammar Stream students will be:

- To gain a set of GCSEs at grades 7-9.
- To aspire to perform at the highest level in their chosen field.

- To raise their aspirations to performance at the highest level in their chosen field.
- To explore a range of extracurricular opportunities that will help them to develop their own passions and become responsible young citizens, who care for their communities and who are committed to bettering them.

What will be different about the Grammar Stream curriculum?

A key aspect of the Grammar Stream curriculum is that students will study two languages from Year 7 onwards: Spanish, as well as either French or Mandarin. We believe that the ability to communicate with others around the world will be vital for success in a twenty-first century world. In addition, a focus on languages will help to build a greater cultural understanding and will maximise students' opportunities to work and study abroad in the future. Please see our website for more information.

How places were offered in 2025

Total applications submitted: 632

4 places allocated to pupils with SEN/EHC plans.

Criterion	Offers
CLA priority	1 offer
Exceptional need	0 offers
Siblings	41 offers
Distance	108 offers, last offer up to 1.268 miles straight-line distance

Appeals information

No appeals.

Key dates

Open evening

Wednesday 1 October at 4.30pm to 7.30pm.
Principal's talk at 6.15pm

Open mornings

In October: Monday 6 to Friday 10, Monday 13, Wednesday 15, Friday 17, Monday 20 and Wednesday 22. All at 9am to 12.20pm

School information

Lady Margaret School

Parsons Green
London SW6 4UN

☎ **020 7736 7138**
✉ **admin@ladymargaret.lbhf.sch.uk**
🌐 **www.ladymargaret.lbhf.sch.uk**

Type of school

Academy, Church of England, girls

Ages

11 to 18

Headteacher/Principal

Ms Elisabeth Stevenson

DfE number

205 4632

**Number of pupils to be
admitted in September 2026**
120

Nearest Tube station

Parsons Green (District Line)

Bus routes

14, 22, 414, 424



School information

Lady Margaret School

About our school

Lady Margaret School is a Church of England academy for girls aged 11 to 18 in the London Borough of Hammersmith & Fulham. It is an outstandingly successful school in welcoming girls of all academic abilities and ensuring that they achieve their full potential.

Its success is based on a culture of high expectations and aspirations, excellent standards of teaching and a strong commitment to the Christian ethos. However, it remains an inclusive school and girls from other faiths or those who have no religious beliefs at all are welcomed.

Established in September 1917, the school seeks to offer a safe, caring and intellectually stimulating environment supported by a strong programme of extra-curricular activities that enables students to go on to lead fulfilled and enriched lives.

A majority of students stay on in the Sixth Form that has high academic standards. This enables girls to choose undergraduate courses at universities of their choice, including Oxbridge, Imperial and UCL as well as art and music colleges.



For more detailed information about the school, please visit their website: www.ladymargaret.lbhf.sch.uk

Apply online: www.lbhf.gov.uk/schooladmissions

Lady Margaret School

Admission criteria

The below criteria has been summarised and you will need to refer to the school website for the full admission policy and arrangements:

www.ladymargaret.lbhf.sch.uk/admissions/year-7-admissions

You can also obtain further information by visiting the school on the dates set out below.

Key: A single asterisk (*) used below denotes that common definitions can be found on page 26.

Foundation and open places

67 foundation places will be reserved for girls who have attended services at a Church of England church or churches at least fortnightly for a minimum of three years up to the date of application. We will take up a reference from a vicar in order to assess each application for a foundation place.

53 open places will be reserved for girls of any, or no, religion. Unsuccessful applicants for foundation places will automatically be considered for open places. There is no need to fill in a separate Additional Information Form – one form covers both foundation and open places.

Ability bands

Applications for foundation and open places will be separately divided into the three ability bands making six categories, depending on the girl's ability and the nature of her application:

1. **Foundation band 1:** 17 places for girls of above-average ability who are entitled to apply for foundation places.
2. **Foundation band 2:** 33 places for girls of average ability who are entitled to apply for foundation places.
3. **Foundation band 3:** 17 places for girls of below-average ability who are entitled to apply for foundation places.
4. **Open band 1:** 13 open places for girls of above-average ability.
5. **Open band 2:** 27 open places for girls of average ability.
6. **Open band 3:** 13 open places for girls of below-average ability.

Priority of applications

After the allocation of children with an EHC plan*, the admission criteria will be applied in the following order of priority:

1. Children Looked After or previously Looked After*.
2. Siblings*. A girl does not qualify for sibling priority if:
 - a. her older sister will not be a pupil at the school in the admission year; or
 - b. her home address is at a greater straight line distance from the school than the home address of her older sister at the time of the latter's admissions; or
 - c. her older sister first joined the school at Year 12.
3. Distance from home to school*.

Additional forms to complete

The supplementary form – there are two distinct and separate systems for submitting the Year 7 Additional Information Form to Lady Margaret School. You can either [submit it online](#) or use the printed version. Those applying online should follow the instructions given on the website. Documents may be uploaded.

Sixth form admissions

For information on applying to sixth form, visit: www.ladymargaret.lbhf.sch.uk/admissions/sixth-form-admissions

School information

Lady Margaret School

How places were offered in 2025

Total applications submitted: 774

4 places allocated to pupils with SEN/EHC plans.

4 places offered to Children Looked After or previously Looked After.

23 places offered to girls with siblings.

Criterion	Offers
Foundation band 1	17 offers (including 3 siblings), last offer up to 2.558 miles straight-line distance
Foundation band 2	33 offers (including 8 siblings), last offer up to 2.071 miles straight-line distance
Foundation band 3	17 offers (including 2 siblings), last offer up to 2.519 miles straight-line distance
Open band 1	13 offers, last offer up to 0.295 miles straight-line distance
Open band 2	27 offers (including, 1 EHCP, 3 CLA and 5 siblings), last offer up to 0.487 miles straight-line distance
Open band 3	13 offers (including 3 EHCP, 1 CLA and 5 siblings), last offer up to 0.338 miles straight-line distance

Appeals information

2025: 4 heard, none upheld

2024: 5 heard, 1 upheld

2022: 3 heard, 1 upheld

Key dates

Open days

Thursday 2 October and Friday 3 October

Please check the school's admission website to see if booking is required

Banding test

Friday 21 November

School information

The London Oratory School

Seagrave Road
London SW6 1RX

☎ **020 7385 0102**
✉ **admin@los.ac**
🌐 **www.london-oratory.org**

Type of school

Academy, Catholic, boys

Headteacher/Principal

Daniel Wright MA

Ages

11 to 18

DfE number

205 5400

Number of pupils to be admitted in September 2026

160

Specialism

Music

Nearest Tube stations

Fulham Broadway (District Line);
West Brompton (District Line
and Overground)

Bus routes

11, 14, 211, 295, 74, 190, 430, 28,
391, 328, C3



School information

The London Oratory School

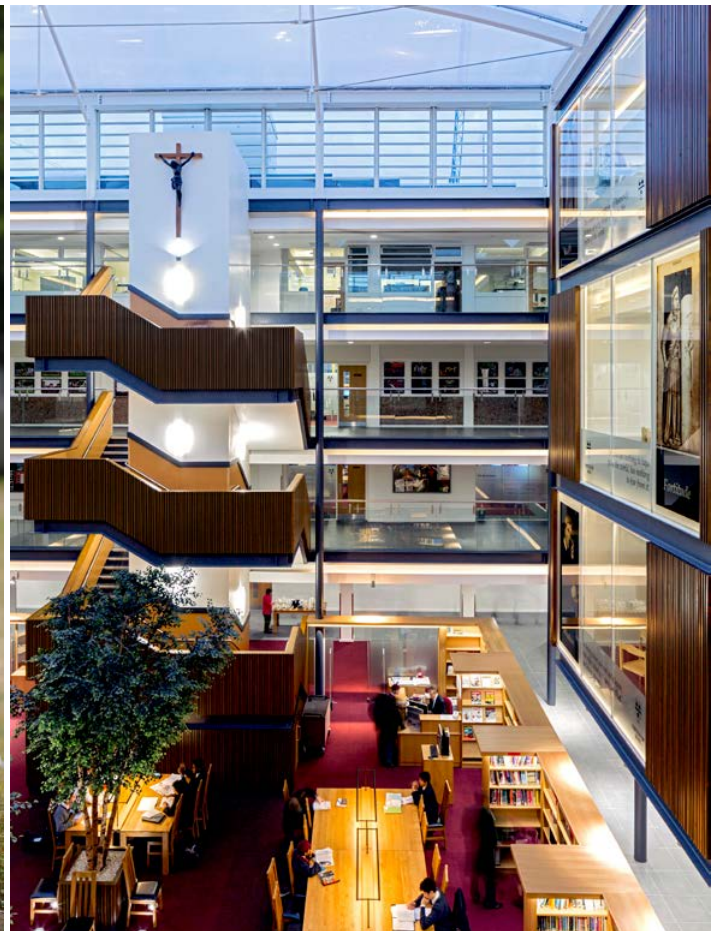
About our school

Trad, but quirky, The London Oratory School is amongst the city's most prestigious Catholic schools.

Educating boys from 7 to 18, with girls in the sixth form, it puts a strong emphasis on music with a liturgical twist, all as part of a broad, liberal arts curriculum.

Sacramental Catholicity sits at the base of the school, with Mass, Benediction and Confession regular parts of a pupil's experience. Principled pastoral formation takes place within this spirit and tradition, with the school taking seriously its role in shaping the character of pupils through an explicit and intentional approach based on the cardinal virtues and inspired by the greats of the Catholic tradition.

In addition to the more mainstream curriculum subjects, expect pupils to study a solid intellectual diet of RE, Latin, and Modern Foreign Languages. Outside of the classroom, we offer a thriving co-curricular programme that features Rugby, Water Polo, Cricket, Athletics, and even Boxing, where the school is registered as an amateur club. But that's not all: whether pupils wish to 'tread the boards' in our theatre, or test their mettle in the challenges of the Combined Cadet Force, we aim to enable every pupil to unearth their talents and to actualise their human potential. Enjoying a thriving, active and supportive alumni community, the school ensures that your association with it will extend well beyond your time here.



For more detailed information about the school, please visit their website: www.london-oratory.org

Apply online: www.lbhf.gov.uk/schooladmissions

The London Oratory School

Admission criteria

The below criteria has been summarised and you will need to refer to the school's website for the full admission policy and arrangements:

www.london-oratory.org

You can also obtain further information by visiting the school on the dates set out below.

Key: A single asterisk (*) used below denotes that common definitions can be found on page 26.

After the allocation of children with an EHC plan*, the admission criteria will be applied in the following order of priority:

The oversubscription criteria below will be applied in order of category. Within Category B each criterion is applied in the given order to determine which applications go forward for consideration against the next criterion. This means those who meet criterion 1 are carried forward for assessment against 2, then those meeting both 1 and 2 are carried forward for assessment against 3 and so on to produce a ranked list.

Category A

Catholic boys Looked After and Catholic boys who have been adopted, or made subject to child arrangements orders or special guardianship orders, immediately following having been Looked After*.

Category B

Catholic boys from practising Catholic families with a Certificate of Catholic Practice. Within this category the following candidates will have priority:

1. Candidates who have a sibling at the school on the date of admission to the school. Candidates meeting this criterion will be placed at the top of Category B.
2. Candidates who are a sibling of a former pupil. Candidates meeting this criterion will be placed at the top of Category B after any candidates meeting (1) above.
3. Candidates who have a parent/guardian who is a member of staff.

4. Candidates who at the time of application attend the Oratory Primary School, Bury Walk, Cale Street, SW3 6QH. Candidates meeting this criterion will be placed at the top of Category B after any candidates meeting (1) and/or (2) above.

Category C

Other Catholic children.

Category D

Other Children Looked After or previously Looked After.

Category E

Catechumens and members of an Eastern Christian Church.

Category F

Any other children.

Tie-break

In the event of a tie for a place after the above criteria have been applied, a ballot system of random allocation will be used with each tied candidate's name being entered into the ballot and names then selected randomly by an independent external organisation, until a rank of all candidates has been established.

If the school is oversubscribed by Catholic applicants with a Certificate of Catholic Practice, only children from Category B will be included in the tie-break.

Additional forms to complete

Supplementary Information Form (SIF) to be returned direct to school.

School information

The London Oratory School

Sixth form

Each year the school admits 40 external candidates to the sixth form for A Level and AS courses. The school will only consider candidates suitable for the A Level and AS courses published by the school. All places will be offered conditional on candidates meeting the requirements for advanced courses for the year concerned. Parents and pupils are advised to attend one of the meetings for parents and prospective pupils, which will provide advice on options and entry requirements for particular courses.

Please see the school website for information on applying to sixth form:
www.london-oratory.org/admissions/new-admissions

Appeals information

2025: 15 appeals, 1 upheld
2024: 11 appeals, 1 upheld
2023: 17 appeals, 2 upheld

Key dates

Open days
Wednesday 10 September, Tuesday 16 September and Thursday 18 September, at 5.30pm and 6.30pm

How places were offered in 2025

Total applications submitted: 736
8 places allocated to pupils with an EHC plan.

Criterion	Offers
Catholic CLA	1 offer, category A
Practising Catholic Boys	<ul style="list-style-type: none">47 offers, category B1 practising Catholic boys with a sibling link0 offers, category B2 practising Catholic boys who are a sibling of a former pupil1 offer, category B3 practising Catholic boys whose parent is a member of staff13 offers, category B4 practising Catholic boys who attend Oratory Catholic Primary School, Bury Walk, Cale Street, SW3 6QH90 offers, category B5 practising Catholic boys

School information

Phoenix Academy

The Curve
Shepherd's Bush
London W12 0RQ

☎ **020 8749 1141**
✉ **admissions@phoenix.futureacademies.org**
🌐 **www.phoenix.futureacademies.org**

Type of school
Academy, mixed

Ages
11 to 18

Principal
Rowan Pearson

DfE number
205 4004

**Number of pupils to be
admitted in September 2026**
150

Nearest Tube stations
White City (Central Line); Wood
Lane (Circle and Hammersmith &
City Lines); East Acton (Central Line)

Bus routes
7, 70, 72, 95, 220, 228, 272, 283



School information

Phoenix Academy

About our school

Welcome to Phoenix Academy – one of London's leading schools, where young people are empowered to achieve and thrive.

At Phoenix, we believe in Freedom through Education: giving every student the qualifications, confidence and character to shape their own future.

As an Ofsted Outstanding school on every measure – ranked third highest in Hammersmith & Fulham and in the top 3% of schools nationally – we know what it takes to achieve at the highest level. Our core values of Knowledge, Aspiration and Respect are at the heart

of everything we do, guiding students to succeed in an ever-changing world.

Our expert teachers work tirelessly to deliver a world-class education, setting the highest standards for learning, behaviour and attendance. We never lower our expectations because we believe in the limitless potential of every child.

Phoenix Academy is a truly special community – and one of the best choices you can make for your child's future.



For more detailed information about the school, please visit their website: www.phoenix.futureacademies.org

Apply online: www.lbhf.gov.uk/schooladmissions

School information

Phoenix Academy

Admission criteria

Below is a summary of the admission criteria, you will need to refer to the school website for the full admission policy and arrangements:

www.phoenix.futureacademies.org

You can also obtain further information by visiting the school on the dates set out below.

Key: A single asterisk (*) used below denotes that common definitions can be found on page 26.

After the allocation of children with an EHC plan*, the admission criteria will be applied in the following order of priority:

1. Children Looked After or previously Looked After*.
2. Children with exceptional medical and/or social need.
3. Admission of children with siblings currently attending the academy and who will continue to do so on the date of admission.
4. Children of staff.
5. All other children.

If there is oversubscription within criteria 1 to 4, random ballot will be used to determine offers.

Sixth form

Please see the school website for information on applying to sixth form:

www.phoenix.futureacademies.org

How places were offered in 2025

Total applications submitted: 211

3 places allocated to pupils with an EHC plan.

All on-time applicants who applied were offered a place.

Appeals information

There have been no appeals lodged over a three-year period.

Key dates

Open mornings

Tuesday 30 September and Wednesday 1 October, at 8.45am to 10am

Please go to the school's website to book a place

Open evening

Thursday 2 October at 4pm to 7pm

School information

Sacred Heart High School

**212 Hammersmith Road
London W6 7DG**

☎ 020 8748 7600

✉ admissions@sacredh.lbhf.sch.uk

🌐 www.sacredhearthigh.org.uk

Type of school

Academy, Catholic, girls

Ages

11 to 18

Headteacher/Principal

Sharon O'Donovan

DfE number

205 4620

Number of pupils to be admitted in September 2026

198

Specialism

Maths, computing

Nearest Tube stations

Hammersmith (Circle, Hammersmith & City, District and Piccadilly Lines), Kensington Olympia (District Line and Overground)

Bus routes

72, 220, 283, 295, 27, 190, 266, 269, 391, 9, 10, 33, 419, 485, 609



School information

Sacred Heart High School

About our school

Sacred Heart High School is an 11 to 18 very high achieving Catholic comprehensive school for girls.

Established by the Society of the Sacred Heart, its mission and vision are underpinned by gospel values, a community of faith and tradition and the pursuit of excellence for all.

The school prioritises a vibrant learning environment where all are valued and challenged to fulfil their unique potential, supported by high quality learning experiences and opportunities. Through this pupils are encouraged to take their place in the world as young women of faith and global citizens, confident in their abilities and talents and with the desire to make a positive difference.



For more detailed information about the school,
please visit their website: www.sacredhearthigh.org.uk

Apply online: www.lbhf.gov.uk/schooladmissions

Sacred Heart High School

Admission criteria

The below criteria has been summarised and you will need to refer to the school website for the full admission policy: <https://bit.ly/3Ax0oRL>

You can also obtain further information by visiting the school on the dates set out below.

Key: A single asterisk (*) used below denotes that common definitions can be found on page 26.

To preserve the school's comprehensive character by establishing a balanced intake across the ability range, the school will allocate all candidates into one of three bands by means of a non-verbal reasoning test. Admission will be as near as possible to the ratio of 25 50 25 of the national ability range. Once allocated to an ability band, the test result will have no further relevance to the outcome of an application. In the event of oversubscription in any band, it will be the admissions criteria and not the test score which determine whether or not a place is allocated.

Accordingly, in 2026 the school will admit 198 pupils into year 7 divided as follows:

- 49 girls allocated by the school to band 1;
- 100 girls allocated by the school to band 2; and
- 49 girls allocated by the school to band 3.

After the allocation of children with an EHC plan*, the admission criteria will be applied in the following order of priority:

Oversubscription criteria

1. Catholic girls Looked after and Catholic girls previously Looked After.
2. Catholic girls with a Certificate of Catholic Practice will then be admitted in the following order:
 - a. Those who have an exceptional medical or social need which makes it necessary for them to attend Sacred Heart High School Hammersmith, and no other school.
 - b. Those who have a sister currently or previously on roll at the school.
 - c. Those with a parent/carer who has been employed as a member of school staff on a permanent contract for at least two years at the time of application.

- d. Those who attend one of our Feeder Schools (see full policy on school's website).
 - e. Other Catholic girls with a Certificate of Catholic Practice.
3. Catholic girls **without** a Certificate of Catholic Practice will then be admitted in the following order:
 - a. Those who have an exceptional medical or social need which makes it necessary for them to attend Sacred Heart High School Hammersmith, and no other school.
 - b. Those who have a sister currently or previously on roll at the school.
 - c. All other Catholic girls.
 4. Other girls Looked After and previously Looked After.
 5. Members of the Catechumenate of a Catholic Church and members of Eastern Christian Churches.
 6. Any other girls.

The random allocation process

If there are more girls in any oversubscription criterion group than places available, the places within that group will be allocated on the basis of random allocation within each ability band.

The random allocation process will be carried out electronically by an organisation wholly independent from the school. The independent organisation will electronically create a random order for applicants and places will be awarded in this order.

Tie-break

Where two applications cannot otherwise be separated because they live an equal distance from the school, the order in which places will be allocated will be determined by the drawing of lots in the presence of an independent witness.

Additional forms to complete

Supplementary Information Form (SIF) to be returned direct to school.

School information

Sacred Heart High School

Sixth form

The school's admission arrangements for its Sixth Form (Years 12 and 13), including the oversubscription criteria applicable to external candidates; the academic entry requirements for all sixth form candidates and courses; how to apply and relevant dates, are contained in the separate Sixth Form Admissions Policy 2025/26.

Please see the school website for information on applying to sixth form: <https://bit.ly/3xdswSr>

How places were offered in 2025

Total applications submitted: 648

3 places allocated to pupils with SEN/EHC plans.

Criterion	Offers
Band 1	49 offers (including 1 exceptional need, 5 siblings and 38 attending a feeder primary school), based on random allocation to those fulfilling Catholic criteria within Category 2e
Band 2	100 offers (including 1 CLA, 1 exceptional need, 24 siblings, 1 staff child and 61 attending a feeder primary school), based on random allocation to those fulfilling Catholic criteria within Category 2e
Band 3	49 offers (including 3 EHCP, 1 CLA and 18 siblings), based on random allocation to those fulfilling Catholic criteria within Category 2d

Appeals information

2025: 8 heard, 7 withdrawn, 1 upheld

2024: 16 heard, 0 upheld

2023: 14 heard, 0 upheld

Key dates

Open mornings

Thursday 11 September and Thursday 18 September, at 9.30am to 11am

Open evenings

Thursday 11 September and Thursday 18 September, at 4pm to 6pm

Banding test

Saturday 8 November

School information

West London Free School

Palingswick House
241 King Street
London W6 9LP

☎ 020 8600 0670
✉ admin@wlfs.org
🌐 www.wlfs.org

Type of school

Free School, mixed

Ages

11 to 18

Joint Headteachers

Mr B McLaughlin

Mr R Peal

DfE number

205 4000

Number of pupils to be admitted in September 2026

130

Specialism

Music

Nearest Tube stations

Ravenscourt Park (District Line)
and Hammersmith (Hammersmith
& City, Circle, District and
Piccadilly Lines)

Bus routes

27, 190, 267, 391, H91



School information

West London Free School

About our school

The West London Free School (WLFS) offers academic excellence, attentive pastoral support and a thriving co-curricular programme, allowing pupils to become the best version of themselves. As a member of the Knowledge Schools Trust, we are driven by a common desire to overcome inequality of opportunity through education. Our school environment fosters in pupils three Core Values, which we promote at every opportunity: Kindness, Hard Work and High Standards.

We teach a rigorous, knowledge-rich curriculum to all pupils, irrespective of background, which introduces pupils to the best and most important work in the humanities and sciences. Pupils make exceptional progress at WLFS, with around half of our GCSE entries graded 7 to 9, placing us in the top 1% of comprehensive schools in England for pupil attainment.

Most importantly, our pupils leave school with confidence and poise, possessing a treasure trove of essential knowledge, allowing them to understand both themselves and the world they inhabit.

Pupil success at WLFS is underpinned by outstanding pastoral support, high standards of behaviour, and rewards for those who exemplify our values. A spirit of membership and friendly competition is encouraged through our House System, that runs vertically through all year groups. As a music specialist school, music is at the heart of school life, providing an accompaniment to major school events. With our thriving co-curricular programme, pupils also thrive in the arts and sport, and we expect all pupils to contribute to the wider life of the school.



For more detailed information about the school, please visit their website: www.wlfs.org

Apply online: www.lbhf.gov.uk/schooladmissions

West London Free School

Admission criteria

The below criteria has been summarised and you will need to refer to the school's website for the full admission policy and arrangements:

www.wlfs.org/year-7

You can also obtain further information by visiting the school on the dates set out below.

Key: A single asterisk (*) used below denotes that common definitions can be found on page 26.

After the allocation of children with an EHC plan*, the admission criteria will be applied in the following order of priority:

1. A Child Looked After or a child who was previously Looked After, or who appears to have been in state care outside of England.
2. Children whose parents are founders of the West London Free School.
3. Up to 12 children who have applied to be considered under the musical aptitude scheme.
4. Children of the West London Free School's permanent staff who have been employed for two or more years at the time at which the application for admission to the school is made or who have been recruited to fill a vacant post for which there is a demonstrable skill shortage. If they are not permanently based at the school, they should work there for more than 50% of their working hours during term-time.
5. Up to 45 places will be offered to children who receive the Pupil Premium Grant and who (a) attend West London Free School Primary, Earls Court Free School Primary or Kensington Primary Academy and/or (b) are a sibling of a child who will be a pupil at WLFS when the child is admitted and/or (c) live within a radius of two miles from the front gate of the school.
6. Children who will have siblings in the school at the time when they are admitted to the school, providing their siblings joined the school prior to September 2023. For the siblings of any child who joins during or after September 2023, the sibling link will only apply if the child and siblings live within a radius of two miles from the front gate of the school.
7. All children who are pupils at the West London Free School Primary and the Earl's Court Free School Primary and live within a radius of two miles from the front gate of the school.
8. Children who will be offered within a radius of two miles from the front gate of the school.
9. All other children who applied to the school, but who fall outside the above criteria.

Tie-break

If there are oversubscriptions within criteria 5, 6, 7 and 8, offers will be decided by random ballot.

Tie-breaker is the process of random allocation whereby applications are put into rank order using a computer program. The random allocation will be supervised by someone independent of the school.

Twins and same-year siblings

Where applications are received from multiple birth or same-year siblings the following procedure will be followed: if one child is selected for a place according to one of the numbered over-subscription criteria, the multiple birth/same-year sibling will also be offered a place, even if that means exceeding the PAN, thus avoiding them having to attend different schools.

Additional forms to complete

Optional Music aptitude application form to be submitted online through the school's website.

Musical aptitude scheme

Full details of the specialist music scheme are given on the school's website:

www.wlfs.org/admissions/musical-aptitude

Parents and carers who wish their children to be considered for a specialist music place must complete a supplementary application form through the school's website. A candidate for a specialist music place will be required to attend a musical aptitude test at the school. Further details of the location and times for tests will be sent to applicants for specialist music places.

The results of the aptitude tests will be used to determine the offer of places under criterion 3. The school will take all reasonable steps to inform parents of the outcome of selection tests before 31 October 2025.

School information

West London Free School

Sixth form

Please see the school website for information on applying to sixth form: www.wlfs-sixthform.org

How places were offered in 2025

Total applications submitted: 938

4 places allocated to pupils with SEN/EHC plans.

Criterion	Offers
CLA	0 offers
Founders' children	0 offers
Music aptitude	12 offers
Children of staff	0 offers
Pupil Premium Grant	23 offers to those qualifying and attending either WLFS Primary, Earl's Court Free School or Kensington Primary Academy. 3 offers to children with a sibling at WLFS Secondary. 20 offers to those living within a 2-mile radius from the school. (One additional offer made to accommodate a child of multiple birth)
Siblings	38 offers to children with a sibling at WLFS Secondary
Pupils at Primary Feeder Schools for 2025	31 offers to those attending WLFS Primary or Earl's Court Free School Primary
Within a 1 to 2 mile radius	0 offers

Appeals information

2025: 4 heard, 0 upheld

2024: 6 heard, please refer to school for number upheld

2023: 10 heard, 0 upheld

Key dates

Open mornings

Monday 15 September to Thursday 16 October, at 9.25am to 10.30am, four mornings a week

Booking will be available through the school's website from 1 September

Music aptitude application deadline

Monday 7 October at 12 noon

Music aptitude test date

Friday 17 October

Additional information



Additional information

Support services

Family Hubs

 www.lbhf.gov.uk/thefamilyhub

H&F Family Hubs provide free activities and support for families and residents that include among others:

- After school clubs
- Health and development reviews
- Youth clubs
- Speech and language therapy
- Housing advice
- Mental health services.

The hubs are located in three different areas of the borough, and also run sessions in libraries, community centres and children centres. The [Family Hubs website](#) promotes a network of services that includes:

Start for Life

A programme of support from pregnancy to 36 months. Email familyhubs@lbhf.gov.uk or call 020 8753 6070.

Local Offer for SEND

Information for children and young people from birth to 25 who have SEND, and their families. Email localoffer@lbhf.gov.uk.

Family Information Service

Childcare information, including help with childcare costs. Email fis@lbhf.gov.uk or call 0845 313 3933.

Youth hub

Information for young people including, community youth projects, courses, job opportunities, mentoring sessions and young carers. Email familyhubs@lbhf.gov.uk or call 020 8753 6070.


Children with an EHC plan

 020 8753 1021

 send@lbhf.gov.uk

If your child already has an EHC plan, the information relating to the application process set out in this brochure does not apply to you as the local authority needs to work with you to agree the best place for your child. To discuss these arrangements, please contact the EHC Planning Service on 020 8753 1021 or send@lbhf.gov.uk.

Support for school attendance

 020 8753 6600


After you have been allocated a school place, making sure your child attends school regularly and on time every day is really important, not only to make sure they have the best possible chance to get the most out of their education but also because children who are not in school are more likely to get into trouble outside school or be vulnerable. Parents have a legal responsibility to get their children to school, but if you are having difficulties with this, it is important you talk to school staff, who are there to help you.

You or school staff may feel you need some extra help. Hammersmith & Fulham Council has professional staff who work with families and with children who are not attending school. They are based in the Early Help Service and can be contacted on 020 8753 6600. This multi-disciplinary team will work with schools, children and parents to improve children's school attendance and reduce unnecessary absence and truancy.

There is also a central team – the ACE Team – located on the 3rd Floor, 145-155 King Street, contact 07741 985404. The ACE team concentrate on the following areas of work: statutory action in relation to school attendance (issuing penalty notices or processing legal action on behalf of schools for entrenched non-attendance, when Early Help are not involved), child employment and children in entertainment, elective home education and children missing education.

In-year admissions

 www.lbhf.gov.uk/schooladmissions

 020 8753 1085

An in-year admission is when an application for a school place needs to be made outside the normal admission round (the first year of entry to a school). In most cases your reason for making an application will be that you have moved to a new address, moved from abroad or you would like to transfer your child from one school to another. There is a separate process for applying in-year for a school place.

Additional information

Support services

Disabled Children's Team

☎ 020 8753 3321

This team offers information, advice, support and practical help to families with children who have a permanent and substantial disability or long-term illness that affects their everyday living. The team offers advice on how to access services available for children and young people who have disabilities. The initial way to contact the team is through the duty social worker who is available on 020 8753 3321.

Educational Psychology Service

☎ 020 8753 6604

Every school has a link educational psychologist (EP) – a specialist in how children, young people and young adults develop and learn.

Schools have a limited amount of free access to an EP to support them to manage Special Educational Needs processes and systems. In addition schools can buy in school visits from their link educational psychologist.

Help may be asked for when pupils show difficulties with their social-emotional development (including wellbeing/mental health), behaviour, learning

or progress generally in school. Educational psychologists can only directly work with a named pupil if parents/carers give informed consent. Parents/carers themselves may ask for their help through the school.

Educational psychologists can also provide general consultative support and guidance for groups or school wide issues as well as research and training.

Fair access protocol

🌐 www.lbhf.gov.uk/schooladmissions

☎ 020 8753 1085

Every school is committed to taking its share of vulnerable children who are hard to place in accordance with locally agreed protocols. Accordingly, outside the normal round of admissions, the school governing bodies are empowered to give absolute priority to a child whose admission is requested under Hammersmith & Fulham's fair access protocol, which carries the agreement of both the governing body and local authority for the current admission year. School governing bodies have this power even for cases when admitting such a child would cause the school to exceed its published admissions number.



Additional information

Support services

Free school meals and school clothing grants

📄 www.lbhf.gov.uk/contact_counciltax_benefits

☎ 020 8753 6681 (option 4)

For information about and to apply for free school meals and school clothing grants please complete the form at www.lbhf.gov.uk/studentbenefits.

For further advice, you can contact the team by emailing benefits@lbhf.gov.uk or calling 020 8753 6681 (option 4) between 9am and 5pm.

Schools also receive additional funding from the central government based on the number of students registered for free school meals (£1,320 per student for primary schools and £900 per student for secondary schools). This money funds valuable support like extra tuition, additional teaching staff or after school activities. We encourage all families who think they may be eligible to apply for these benefits.

Eligibility

Your children qualify for free school meals and/or clothing grants to buy school uniforms if you receive any of the qualifying benefits:

- Income Support
- Income-based Job Seekers Allowance
- Income-related Employment and Support Allowance
- Guaranteed Pension Credit
- You are supported under the National Asylum Seekers Support System (NASS)
- Child Tax Credit, but not Working Tax Credit and have an annual taxable income of less than £16,190
- Universal Credit (provided you have an annual net earned income of no more than £7,400).

More information on clothing grants

If you live outside Hammersmith & Fulham, you should apply to your own authority. The criteria for qualifying for clothing grants are the same as listed above for free school meals entitlement.

Universal Credit transitional protection

Pupils currently receiving free school meals will continue to receive them while Universal Credit is rolled out. This will apply even if your earnings rise above the new threshold during that time. Once Universal Credit is fully rolled out, pupils receiving free school

meals but who no longer qualify for them because your earnings have risen above the new threshold will continue to receive them until the end of their current phase of education (primary or secondary).

Assistance with home-to-school travel

📄 www.lbhf.gov.uk/schooladmissions

☎ 020 8753 1085

All children under 16 in full-time education can travel free on bus and tram services. All school pupils will be required to carry a Zip Oyster photocard to travel free on buses and trams. For further information, please visit the Transport for London (TfL) website at www.tfl.gov.uk.

The statutory walking distance required for a child aged up to eight years is two miles, while for children aged eight to 16 years it is three miles. Parents are therefore advised to consider this in making their choices of schools.

The admissions team will be able to advise if your child will qualify for a travel support grant. Contact 020 8753 1085 or email school.admissions@lbhf.gov.uk.



Additional information

14 to 19 education options

University Technical Colleges (UTCs)

UTCs provide free, vocational education to secondary school-aged children of 14 to 19 years. They especially focus on STEM subjects (Science, Technology, Engineering and Mathematics), combining academic with technical and practical learning. UTCs are backed by employers and local universities and are set up to provide real life projects as part of the curriculum to bring students' learning to life.

Students who opt to go to a UTC can expect to study in up to two specialisms in addition to opportunity for GCSEs and A Levels.

There is no UTC in H&F. The nearest one (10 miles away) is based in Middlesex:

Global Academy UTC

Address: The Old Vinyl Factory, Hayes,
Middlesex UB3 1DH

☎ 020 3019 9000

✉ info@globalacademy.com

Sixth form and post-16 education in Hammersmith & Fulham

Ealing, Hammersmith and West London College

Ealing, Hammersmith and West London College offers sixth form provision along with a range of courses and apprenticeship pathways. For more information and to enrol contact the college.

Address: Gliddon Road, London W14 9BL

☎ 020 8741 1688

✉ lis@wlc.ac.uk

🌐 www.wlc.ac.uk

William Morris Sixth Form

William Morris Sixth Form (WMSF) was established in 1994 as the country's first 16 to 19 comprehensive school, providing education to students from Hammersmith & Fulham as well as young people from across the whole of London.

The sixth form offers a very wide range of subjects at AS and A Level, BTEC, GCSE and the Extended Project Qualification, as well as an extensive enrichment and sports programme. The sixth form has a long-standing reputation for providing a supportive and inclusive environment where the needs of each individual student are understood and met. Each year nearly 300 students successfully progress to university, including Russell Group universities and Oxbridge.

WMSF is able to admit up to 400 new students each year and welcomes applications from all students who will be aged 16 to 18 on 31 August in the year of starting their programme. WMSF is oversubscribed, so it is strongly advised all students apply before the end of January to secure an interview.

Address: St Dunstan's Road, London W6 8RB

☎ 020 8748 6969

✉ info@wmsf.ac.uk

🌐 www.wmsf.ac.uk

Additional information

Independent schools

Independent fee-paying schools

All of the following schools are independent fee-paying schools, although each one offers some form of scholarship or bursary scheme. Please contact the schools for further information, application forms and any queries about the application process.

More detailed information is available from the Independent Schools Directory and Resource at www.indschools.co.uk and the Independent Schools' Council at www.isc.co.uk or from schools direct.

These schools do not form part of the Pan-London Admissions System and you must apply to them directly.

Godolphin and Latymer School

Godolphin and Latymer School is an independent school for girls aged 11 to 18. Entry at age 11 is on a competitive basis.

Address: Iffley Road, London W6 0PG

☎ 020 8741 1936

✉ office@godolphinandlatymer.com

🌐 www.godolphinandlatymer.com

Latymer Upper School

Latymer Upper School is an independent, co-educational day school. Girls have been in the sixth form since 1996, and in 2004 girls were admitted to the lower school. The school is now fully co-ed in every year group. Entrance is by examination and interview in the spring term.

Address: King Street, London W6 9LR

☎ 020 8629 2024

✉ head@latymer-upper.org

🌐 www.latymer-upper.org

St James Senior Girls' School

St James Senior Girls' School is an independent day school for girls aged 10 to 18.

Address: Earsby Street, London W14 8SH

☎ 020 7348 1777

✉ schoolsec@sjsg.org.uk

🌐 www.stjamesschools.co.uk

St Paul's Girls' School

St Paul's Girls' School is an independent secondary day school for girls from 11 to 18 years of age. There are approximately 730 pupils, with 200 in the sixth form. Entry at 11+ is by examination and interview.

Address: Brook Green, London W6 7BS

☎ 020 7603 2288

✉ admissions@spgs.org

🌐 www.spgs.org



Locations and contacts



Locations and contacts

Other authorities

Contact details for neighbouring boroughs

Detailed information about schools outside Hammersmith & Fulham is available directly from schools or the local authority in which they are situated.

Please remember to check the admission arrangements for your preferred schools to assess whether you are likely to be offered a place. You may also be required to complete a supplementary form.

If you live outside Hammersmith & Fulham but wish to apply for a school in Hammersmith & Fulham, you will need to apply on the common application form of the local authority where you live.

Barking and Dagenham

☎ 020 8227 3004

✉ infos@lbdd.gov.uk

🌐 www.lbdd.gov.uk/admissions

Barnet

☎ 020 8359 7651

✉ school.admissions@barnet.gov.uk

🌐 www.barnet.gov.uk

Bexley

☎ 020 8303 7777

✉ schooladmissions@bexley.gov.uk

🌐 www.bexley.gov.uk/admissions



Locations and contacts

Other authorities

Brent

☎ 020 8937 3110
✉ school.admissions@brent.gov.uk
🌐 www.brent.gov.uk

Bromley

☎ 020 8313 4044
✉ school.admissions@bromley.gov.uk
🌐 www.bromley.gov.uk

Camden

☎ 020 7974 1625
✉ admissions@camden.gov.uk
🌐 www.camden.gov.uk

City of London

☎ 020 7332 1002
✉ fyi@cityoflondon.gov.uk
🌐 www.cityoflondon.gov.uk

Croydon

☎ 020 8726 6400
✉ school.admissions@croydon.gov.uk
🌐 www.croydon.gov.uk

Ealing

☎ 020 8825 5511/5522
✉ mainroundadmissions@ealing.gov.uk
🌐 www.ealing.gov.uk

Enfield

☎ 020 8379 5501
✉ enfield.school.admissions@enfield.gov.uk
🌐 www.enfield.gov.uk

Greenwich

☎ 020 8921 8043
✉ school-admissions@royalgreenwich.gov.uk
🌐 www.royalgreenwich.gov.uk

Hackney

☎ 020 8820 7000
✉ admissions@hackney.gov.uk
🌐 education.hackney.gov.uk/admissions

Haringey

☎ 020 8489 1000
✉ schooladmissions@haringey.gov.uk
🌐 www.haringey.gov.uk

Harrow

☎ 020 8901 2620
✉ schooladmissions@harrow.gov.uk
🌐 www.harrow.gov.uk

Havering

☎ 01708 434600
✉ schooladmissions@haverling.gov.uk
🌐 www.haverling.gov.uk

Hillingdon

☎ 01895 556644
✉ admissions@hillington.gov.uk
🌐 www.hillington.gov.uk

Hounslow

☎ 020 8583 2711
✉ admissions@hounslow.gov.uk
🌐 www.hounslow.gov.uk/admissions

Islington

☎ 020 7527 5515
✉ admissions@islington.gov.uk
🌐 www.islington.gov.uk/admissions

Kensington and Chelsea

☎ 020 7745 6432
✉ school.admissions@rbkc.gov.uk
🌐 www.rbkc.gov.uk/schools/admissions

Kingston upon Thames

☎ 020 8547 4610
✉ kingston.admissions@achievingforchildren.org.uk
🌐 www.kingston.gov.uk

Lambeth

☎ 020 7926 9503
✉ schooladmissions@lambeth.gov.uk
🌐 www.lambeth.gov.uk/eadmissions

Locations and contacts

Other authorities

Lewisham

☎ 020 8314 8282
✉ schooladmissions@lewisham.gov.uk
🌐 www.lewisham.gov.uk

Merton

☎ 020 8274 4906
✉ admissions@merton.gov.uk
🌐 www.merton.gov.uk

Newham

☎ 020 8430 2000
✉ pupil.services@newham.gov.uk
🌐 www.newham.gov.uk

Redbridge

☎ 020 8554 5000
✉ admissions@redbridge.gov.uk
🌐 www.redbridge.gov.uk

Richmond upon Thames

☎ 020 8547 5569
✉ richmond.admissions@achievingforchildren.org.uk
🌐 www.richmond.gov.uk

Southwark

☎ 020 7525 5337
✉ schools.admissions@southwark.gov.uk
🌐 www.southwark.gov.uk

Sutton

☎ 020 8770 5000
✉ admissions@sutton.gov.uk
🌐 www.sutton.gov.uk

Tower Hamlets

☎ 020 7364 5006
✉ school.admissions@towerhamlets.gov.uk
🌐 www.towerhamlets.gov.uk

Waltham Forest

☎ 020 8496 3000
✉ admissions@walthamforest.gov.uk
🌐 www.walthamforest.gov.uk

Wandsworth

☎ 020 8871 7316
✉ admissions@wandsworth.gov.uk
🌐 www.wandsworth.gov.uk

Westminster

☎ 020 7745 6433
✉ schooladmissions@westminster.gov.uk
🌐 www.westminster.gov.uk

Contact details for diocesan authorities

The Diocese of Westminster Education Service and London Diocesan Board for Schools provide additional information about education in Catholic and Church of England schools respectively.

Diocese of Westminster Education Service (Catholic)

☎ 020 7798 9005
🌐 education.rcdow.org.uk

London Diocesan Board for Schools (Church of England)

☎ 020 7932 1100
🌐 www.ldbs.co.uk



H&F's educational establishments

School locations

Listed below are Hammersmith & Fulham's educational establishments, grouped by type of school and then in alphabetical order. Each school's location is pinpointed on the map on page 80.

Community primary schools

- 1 Addison Primary School**
Addison Gardens W14 0DT
- 2 Avonmore Primary School**
Avonmore Road W14 8RL
(this school is temporarily located at
11 Mund Street, London W14 9LY)
- 3 Brackenbury Primary School**
Dalling Road W6 0BA
- 4 Flora Gardens Primary School**
34 Lena Gardens W6 7PZ
- 5 Kenmont Primary School**
Valliere Road NW10 6AL
- 6 Melcombe Primary School**
Fulham Palace Road W6 9ER
- 7 Miles Coverdale Primary School**
Coverdale Road W12 8JJ
- 8 Normand Croft Community School**
Bramber Road W14 9PA
- 9 Old Oak Primary School**
Mellitus Street W12 0AS
- 10 Sir John Lillie Primary School**
Lillie Road SW6 7LN
- 11 Wendell Park Primary School**
Cobbold Road W12 9LB
- 12 Wormholt Park Primary School**
Bryony Road W12 0SR

Primary academies and free schools

- 13 Ark Bentworth Primary Academy**
Bentworth Road W12 7AJ
- 14 Ark Conway Primary Academy**
Hemlock Road W12 0QT
- 15 Ark White City Primary Academy**
Edcity Walk, W12 7PT
- 16 Earl's Court Free School Primary**
Cambridge Grove W6 0LB
- 17 Fulham Primary School**
Halford Road SW6 1JU
- 18 Greenside Primary School**
Westville Road W12 9PT
- 19 Langford Primary School**
Gilstead Road SW6 2LG
- 20 Queen's Manor Primary School**
Lysia Street SW6 6ND
- 21 Sullivan Primary School**
Peterborough Road SW6 3BN
- 22 Thomas's Academy**
New King's Road SW6 4LY
- 23 West London Free School Primary**
Cambridge Grove W6 0LB

Locations and contacts

H&F's educational establishments

Voluntary aided primary schools

- 24 All Saints C of E Primary School**
Bishops Avenue SW6 6ED
- 25 Good Shepherd Catholic Primary School**
Gayford Road W12 9BY
- 26 Holy Cross Catholic Primary School**
Basuto Road SW6 4BL
- 27 John Betts Primary School**
Paddenswick Road W6 0UA
- 28 Larmenier and Sacred Heart Catholic Primary School**
41a Brook Green W6 9BL
- 29 St Augustine's Catholic Primary School**
Disbrowe Road W6 8QE
- 30 St John XXIII Primary School**
1 India Way W12 7QT
Formerly Pope John Catholic Primary School
- 31 St John's Walham Green C of E Primary School**
Filmer Road SW6 6AS
- 32 St Mary's Catholic Primary School**
Masbro Road W14 0LT
- 33 St Paul's C of E Primary School**
Worldge Street W6 9BP
- 34 St Peter's C of E Primary School**
33 St Peter's Road W6 9BA
- 35 St Stephen's C of E Primary School**
Uxbridge Road W12 8LH
- 36 St Thomas of Canterbury Catholic Primary School**
Estcourt Road SW6 7HB
- 37 The London Oratory School – Junior House**
Seagrave Road SW6 1RX
Note that this school does not form part of the primary admissions process, applications are made directly to the school

Voluntary aided primary bilingual schools

- 38 The Fulham Bilingual**
Clancarty Road SW6 3AA
Affiliated with Holy Cross Catholic Primary School (location 26 on the map)

Community nursery schools and early years centres

- 39 Bayonne Nursery**
50 Paynes Walk W6 8PF
- 40 James Lee Nursery School**
Gliddon Road W14 9BH
- 41 Randolph Beresford Early Years Centre**
Australia Road W12 7PH
- 42 Vanessa Nursery School**
Cathnor Road W12 9JA

Special educational needs schools

- 43 Cambridge School (age 11 to 16)**
61 Bryony Road W6 0LB
- 44 Jack Tizard School (age 5 to 11)**
South Africa Road W12 7PA
- 45 Miles Coverdale School Language Impairment Unit (age 5 to 11)**
Coverdale Road W12 8JJ
- 46 Queen's Manor Primary School Learning Difficulties Unit (age 5 to 11)**
Lysia Street SW6 6ND
- 47 Queensmill School (age 3 to 19)**
Askham Road W12 0NW
- 48 Woodlane High School (age 11 to 16)**
Du Cane Road W12 0TN

Alternative provisions

- 49 Ormiston Bridge Academy (all-through)**
Finlay Street, SW6 6HB

H&F's educational establishments

Secondary schools

- 50 Ark Burlington Danes Academy**
Wood Lane W12 0HR
Academy, Church of England, mixed aged 11 to 18
- 51 Fulham Cross Girls' School**
Munster Road SW6 6BP
Academy, girls aged 11 to 16.
Part of the Fulham College Academy Trust
- 52 Fulham Cross Academy**
Kingwood Road SW6 6SN
Academy, mixed aged 11 to 16.
Part of the Fulham College Academy Trust
- 53 Hammersmith Academy**
Cathnor Road W12 9JD
Academy, mixed aged 11 to 18
- 54 Hurlingham Academy**
Peterborough Road SW6 3ED
Federation Academy, mixed aged 11 to 18
- 55 Lady Margaret School**
Parsons Green SW6 4UN
Academy, Church of England, girls aged 11 to 18
- 56 Phoenix Academy**
The Curve W12 0RQ
Academy, mixed aged 11 to 18
- 57 Sacred Heart High School**
Hammersmith Road W6 7DG
Academy, Catholic, girls aged 11 to 18
- 58 The Fulham Boys School**
532 Fulham Road SW6 5BD
Free school, boys aged 11 to 16
- 59 The London Oratory School**
Seagrave Road SW6 1RX
Academy, Catholic, boys aged 11 to 18
(mixed sixth form)
- 60 West London Free School**
King Street W6 9LP
Free school, mixed aged 11 to 18
- 61 William Morris Sixth Form**
St Dunstan's Road W6 8RB
Provision for students aged 16 to 19.
Note that this school provides sixth form provision only and is not part of the secondary admissions process

Locations and contacts

H&F's educational establishments



Apply online: **[www.lbhf.gov.uk/ eadmissions](http://www.lbhf.gov.uk/eadmissions)**

The Pan-London eAdmissions site opens
on 1 September 2025.

If your child is currently in Year 6 and born
between 1 September 2014 and 31 August
2015, you will need to apply for a secondary
school place by 31 October 2025.

For further information contact:

Admissions Team

3rd Floor, 145-155 King Street, London W6 9XY

Telephone: 020 8753 1085

Email: school.admissions@lbhf.gov.uk

www.lbhf.gov.uk/schooladmissions



© Hammersmith & Fulham Council September 2025
Design and accessibility: staffordtilley.co.uk

The information provided in this brochure is correct at the time of going to print in September 2025. The admissions process and school admission arrangements are set out in accordance with the current Admissions Code (issued December 2014), Section 84 of the School Standards and Framework Act 1998. Any corrections, updates and additions will be published on our website: www.lbhf.gov.uk/schooladmissions

Photo credits: pages 16, 17, 18, 22, 70, 72 © iStock

On the cover: Hammersmith Academy, photo courtesy of the school

Other photos courtesy of: Fulham Cross Girls' School (pages 5, 38, 39); West London Free School (pages 6, 25, 63, 64); Fulham Cross Academy (pages 7, 35, 36); Phoenix Academy (pages 10, 56, 57); Ark Burlington Danes Academy (pages 11, 27, 28); The Fulham Boys School (pages 30, 31); Hammersmith Academy (pages 41, 42, 69); The Hurlingham Academy (pages 45, 46, 67); Lady Margaret School (pages 48, 49, 76); The London Oratory School (pages 52, 53); Sacred Heart High School (pages 59, 60, 73)