




FREE!
Win Lyric
panto tickets
SEE PAGE 26

WINTER UPDATE

ACTING TO BUILD
**A STRONGER,
SAFER & KINDER**
BOROUGH

Our Big H&F Christmas Day Lunch returns

Hollywood actor Hugh Grant
helps serve Christmas lunch for
older residents. Sign up now!

SEE PAGE 9



**TURN YOUR
STREET INTO
A PARTY!**
SEE PAGE 18

❄️ **Christmas &
New Year bins +
recycling dates**
PAGES 13-16

❄️ **Get help
with bills &
cost of living**
PAGES 12 & 17

❄️ **What's On this
winter? Best days
and nights out**
PAGES 24-26

❄️ **Take the H&F
Christmas Quiz!**
PAGES 20-22



Lyric

16 Nov - 05 Jan

Aladdin

Written by **Sonia Jalaly**
Directed by **Nicholai La Barrie**

Tickets from £10
lyric.co.uk | 020 8741 6850



Scan to book tickets

Registered Charity No. 278518

h&f
Hammersmith & Fulham

ARTS COUNCIL
ENGLAND

Supporting the arts and the building of
ARTS COUNCIL
ENGLAND

GET VACCINATED. GET WINTER STRONG.



To check your eligibility, visit:
nwlondonicb.nhs.uk/winter

NHS



Flu and COVID-19 can be serious.

People who are most at risk of serious illness are invited to get a free NHS **COVID-19 and/or flu vaccine** for vital protection over the colder months.

Those over 75 and people more than 28 weeks pregnant can also have their **RSV vaccine** this winter.

Season's Greetings

Welcome to the 2024 edition of Winter Update

The world is changing faster than ever before. In November, we launched the second phase of Hammersmith & Fulham's inclusive economic growth strategy so we can bring our residents some of the best new jobs and business start-up opportunities anywhere in the world.

We first launched our unique economic strategy in 2017. It sought to establish our borough as a global economic hotspot in science, technology, engineering, maths, medicines and media (STEM³) industries – the industries that will power the rest of the 21st century.

Since then, we have attracted more than £6billion of growth investment – which is more than all of the rest of west London combined. More importantly, it's brought 13,000 new STEM³ jobs into our borough.

Making this growth inclusive for our residents is our guiding star. Our latest initiative that helps that is the new H&F Pathway Bond. It's a new partnership with local employers to give all our young people practical support and a clear path to the opportunities on their doorstep.

Things are changing quickly around the world. There are opportunities within that change. I'm determined that your council does everything possible to make sure everyone has the best possible chance to grasp and benefit from them.

Have a great festive season and a happy and prosperous new year.



Cllr Stephen Cowan
Leader of H&F



Cllr Stephen Cowan
Leader of
Hammersmith & Fulham



8



24

What's inside

Acting to build a Stronger, Safer, Kinder borough

4 STRONGER

Tomorrow is made here in H&F as new jobs and investment turns the borough into a global economic hotspot

+ Securing the future of Charing Cross Hospital

6 SAFER

Seven ways we're making your streets safer

+ New CCTV and lights protecting H&F 24/7
+ Our Law Enforcement Team

8 KINDER

Ten years of free home care for H&F residents

+ Free school breakfasts
+ Big Christmas Day Lunch

Making H&F a better borough for everyone

10 Cleaner and greener

How we're taking action to cut the toxins in our air

12 Cost-of-living help

Need help with bills or food? Contact our team for support

13 Christmas & New Year bins + recycling collections

Your guide to the days your bins and trees will be collected

18 Get involved

There are a huge number of ways you can get active in H&F and improve your neighbourhood

23 Pub quiz special

Beat the winter blues with a good old-fashioned pub quiz



We aim to make all of our publications accessible. If you require this document in a specific format, please contact us on **020 8748 3020**

Published by Hammersmith & Fulham Council, December 2024

STRONGER



Tomorrow is made here

H&F is now a global economic hotspot thanks to record investment and new jobs. Working with Imperial College London, here's how we've achieved this economic growth

Upstream London is Hammersmith & Fulham Council's pioneering industrial strategy. We launched it in 2017 with the aim of transforming our borough into an inclusive, global, economic hotspot – a place where innovation and creativity define exciting new opportunities for our people.

Partnering with world-leading university Imperial College London, we established the White City Innovation District.

Since then, we've helped attract **£6billion of investment** and created more than **13,000 new jobs** in H&F. The borough is now home to globally-renowned companies such as Autolus, L'Oréal

and Novartis. Eighty-five per cent of all investment is in the 'STEM' fields of science, technology, engineering, maths, medicine and media.

Pathway Bond paves the way for young people

We are now taking Upstream London to the next level. The recently launched 'Upstream Pathway Bond' brings together businesses and educators to offer young people a clear path into

“Where innovation and creativity define exciting new opportunities

new careers and skills in the hottest new tech industries.

Organisations who sign up offer advice, work experience, apprenticeships, interview skills, mentoring and inspiration. In return, businesses have a highly-skilled workforce on their doorstep.

Global partners

To power our Industrial Strategy, we've recently forged seven powerful international partnerships to drive innovation across the globe with:

- Barcelona, Spain
- Oslo and Lillestrøm, Norway
- Milan, Italy
- Melbourne, Australia
- Buenos Aires, Argentina
- Rzeszów, Poland.

Through these partnerships and the Pathway Bond, young people will get the opportunity to travel to some of our international partners in Europe for work experience.

RUTHLESS FINANCIAL EFFICIENCY

Despite years of budget austerity, we were one of the few councils in England to record a budget surplus last year.

These funds are being reinvested in vital local services, such as providing free home care and improving our green spaces.

SECURING THE FUTURE OF CHARING CROSS HOSPITAL

We're working with Imperial College NHS Healthcare Trust to support the full refurbishment of Charing Cross, alongside Hammersmith and St Mary's hospitals.

It is good news that the government has confirmed that Charing Cross has been reinstated to the New Hospitals Programme.

Historically, the floor-by-floor refurbishment was never allocated the funding it needs or a timescale.

This was alarming as we know how much residents value the expert care they receive from our local NHS and our world-leading medical professionals.





STRONGER



Left to right, H&F Leader Stephen Cowan signs an agreement with Melbourne in Australia; Imperial College London helped us create the White City Innovation District; The ribbon is cut at a new Family Hub in Fulham.

Innovation Borough

We are making opportunities for local businesses and residents while cementing H&F's position as a global economic leader by creating an Innovation Borough.

This means we can deliver inclusive economic growth that works for everyone in H&F, featuring:

Affordable homes

We're delivering **1,800 new homes** over the next five years, with **65%** being affordable. We're building:

- 134 new homes at the Aintree Estate in Fulham
- 132 new homes at our new £150m EdCity Campus in White City
- 105 new homes at our Civic Campus in Hammersmith.

Meanwhile, we're spending £1million every week on repairs and improvements to our own social housing.

Record community investment

We've invested a record **£3.9million** to help support our local community and voluntary groups as they deliver projects or services for residents over the next three years.

Supporting families



Our three new Family Hubs offer vital support across the borough. Located at the Tudor Rose building in Fulham, Stephen Wiltshire Centre in Fulham and in Old Oak, they've helped more than **1,300** local families this year.

A GLOBAL HOTSPOT Investment in H&F since 2017



£1.8 billion

Life sciences and healthcare



£1.1 billion

Green and climate tech



£934 million

Cyber, AI and fintech



£507 million

Creative, digital, film and screen

INVESTING IN YOUR FUTURE

Our pioneering H&F Green Investment scheme has now raised £1.75million to fund vital local climate and ecological projects.

Thanks to 1,500 local investors, we're delivering new projects including a garden in Hammersmith's Frank Banfield Park, and a green sanctuary in Fulham's Eelbrook Common.



This is a rare win-win-win. You can make an investment with a fixed return and know that your money is being invested in projects that will help improve your area. The council can then borrow at a lower rate, reducing the costs of green projects.

The green scheme aims to raise up to £5million over the next few years.

CYCLE STORAGE REVOLUTION

We've now installed 100 new cycle hangars for secure on-street cycle parking.

By 2027, we will have installed 500 bike hangars – enough to store all 3,000 bikes from local people who have requested a space.



SAFER

Seven ways we're making your streets safer

Keeping you safe is our number one priority. We've invested in groundbreaking approaches to fight local crime. Here are just a few...

1 New lights

We're working to make Shepherd's Bush Green safer. We've installed **20** new motion-sensor lights that now illuminate the walkways and pavements. And we've upgraded **35** cameras to provide full 360-degree coverage.



✓
**SAFER
STREETS**

✓
**SAFER AT
NIGHT**

2 New CCTV cameras

We've invested **£5.4million** to create London's most comprehensive CCTV network. Nearly **2,000** cameras are now monitored from our control room around the clock. It's linked to the Met Police and also works to support our Law Enforcement Team to prevent crime.

In 2024, our 24/7 operators helped the Met Police secure **hundreds** of arrests and kept our streets safe. The CCTV team spot suspicious behaviour in real time and help guide the response from the police.

3 Your Law Enforcement Team

Our Law Enforcement Team (LET) has helped make H&F one of London's safest boroughs. We now have the **fourth-lowest** crime rate per 1,000 visitors.

The team works as the eyes and ears of the council, delivering impressive results this year. See our results on the right.

✓
**THE SAFER
BOROUGH**


3,426
weapon sweeps


2,914
antisocial behaviour investigations


1,874
fines issued


90,741
patrols completed

GOT A PROBLEM?

Email: let.hf@lbhf.gov.uk

Call: 020 8753 1100
(option 3)

In an emergency,
always call 999

4 No room for hate

The H&F Faith Forum unites **17** religious leaders from across H&F. Our mosque, church, temple and synagogue leaders work together to promote peace and tolerance.

This vital partnership anchors our new hate crime strategy. Together, we're focused on prevention, support for victims and creating stronger bonds in our community.

Pictured far right: H&F Deputy Leader Cllr Alex Sanderson, H&F Chief Executive Sharon Lea and Cllr Rebecca Harvey meet H&F Faith Forum leaders.

✓
SAFER
TOGETHER



✓
SAFER
FOR
WOMEN



5 Working to end sexual harassment

We are the first London borough to make street harassment an offence. Offenders now face fines of up to **£1,000** for threatening or unsafe acts. Our Law Enforcement Team now carry out special patrols in town centres to improve safety at night.

These new measures are already making a difference. When a young woman reported being repeatedly catcalled from a builder's van in Fulham Palace Road, we took action. Using CCTV footage, we tracked down the perpetrator and fined him £100. He paid the next day.

“
This pioneering approach supports improved safety and shows what we can achieve through police and council collaboration

Craig Knight, Met Police Superintendent for H&F, talks about our campaign to end sexual harassment.

6 Zero tolerance on illegal goods

Our Trading Standards officers made the borough's largest-ever seizure of illegal tobacco products this year.

More than **60,000** counterfeit cigarettes and hundreds of dangerous

vapes were confiscated from a single shop – Milan Market in King Street, Hammersmith. The operation led to the closure of the business and showed our zero-tolerance approach to illegal trading in H&F.

✓
SAFER
SHOPS



7 Fighting gangs

Our dedicated Gangs Unit has secured **£280,000** to support youth initiatives across H&F estates, including West Kensington and Clem Attlee. The two-year community scheme features youth and family projects.

We've invested a further **£30,000** to support victims of serious violence along with their families. It enables extra LET patrols, youth outreach work and support for the community where it's needed most.

✓
SAFER
FOR
YOUNG
PEOPLE



Ten years of free home care for H&F residents

Abolishing home care charges has helped to keep our older and Disabled people living independently with expert support

In 2014, we took the decision to abolish all home care charges for older and Disabled residents. Ten years later, we're still the only council in England to offer this life-changing service for free.

More than 5,000 local people have now been supported via our free service. We're able to pay for this care by managing our council budgets with ruthless financial efficiency.

Our carers help people with everyday tasks including assistance with medication, support with eating and

drinking, and help in the bathroom. It is essential support, that ensures people can continue living in their own homes, with their own routines, on their own terms.

The compassionate service also means that families can enjoy quality time together, without working as a family carer or worrying about

the health, safety and security of their loved ones.

Our free home care is also welcomed by the NHS, as it means people can be discharged from hospital and supported at home. This helps to cut healthcare costs and free hospital beds for people in greater need

H&F Deputy Leader, Cllr Alex Sanderson, says: "We are still the only council in the country to provide this service entirely for free. Home charges have rightly become known as a tax on disability – and our residents deserve better."



H&F is the only council in the country to provide home care entirely for free



FIND OUT MORE

If you, or someone you know, could benefit from our home care support, scan this QR code to find out more. Or visit: lbhf.gov.uk/assessments-care



Fulham resident Sonia Funcheon (seated) is supported by free home care visits, three times a day. This frees up more time to spend with her daughter Deborah (pictured).

CASE STUDY 1

“
I don't think I could
survive without it. It just
makes my life a lot easier
”

Florence Mahon has lived in H&F since 1957. She began receiving free home care support after a knee replacement operation. Her carers visit five days a week and help Florence get ready for the day.



“It's impacted my life quite a lot and I don't think I could survive without it. It just makes my life a lot easier,” she said. “Without the care I wouldn't be going out. And there's no way I could afford to pay [for the care]. It would be just out of my reach, to be honest.”

CASE STUDY 2

“
I'm very surprised that
all this care is free. It's
been a relief that you
don't have to pay for it
”

Fulham resident and grandmother Sonia Funcheon has lived in H&F for 86 years. She receives care visits three times a day. “They're very, very good. All my needs are met by them,” Sonia said.



“They get my shopping, and do my personal care. They help me get ready in the morning and give me breakfast. At lunchtime they give me my midday meal. And in the evening, they come and get me ready for bed. I'm very surprised that all this care is free. It's been a relief that you don't have to pay for it.” ■



Guests dance at last year's lunch party, while actor Hugh Grant (below) helped serve meals.

Sign up to our Big Christmas Day Lunch party

Our Big Christmas Day Lunch is back again. With festive food, live music, gifts and dancing, it's a big hit every year for all the older residents who would otherwise be celebrating the holiday alone.

Again this year, up to 500 residents will gather on Christmas Day at the Novotel London West hotel in Hammersmith. We offer free transport to and from for anyone who needs it.

The day is completely free for everyone attending, made possible with donations from residents and businesses, and our partnership with local charity H&F Giving.

➔ GET INVOLVED

If you'd like to donate or volunteer, just scan the QR code or visit:

lbhf.gov.uk/xmaslunch



Supporting local children with free school breakfasts

We offer free breakfast daily to pupils at 22 local primary schools and two nurseries. That's because we want every child to start the day with a full stomach.

We were one of the first boroughs in London to offer free breakfasts to primary pupils, as we believe that no child should ever be too hungry to learn. Since we started offering free breakfasts in 2019, we've

served more than two million meals to young learners.

Our work doesn't stop when school is out. Last year, we offered families in need more than 5,000 holiday food packs for children who might otherwise miss the breakfast they normally eat at school.

Claire Fletcher, Headteacher at St Paul's CE Primary School in Hammersmith, said: “I welcome H&F's commitment to tackle the very real issue of food poverty.”



Air pollution is the greatest threat to your health

We're acting across local neighbourhoods, green spaces and our buildings to cut the deadly toxins in the air you breathe

Nobody wants to drink a glass of dirty water. Yet roughly **18 times each minute** we breathe in contaminated, poisonous air.

More than seven per cent of local deaths in 2022 were linked to toxic air. Which makes H&F the **tenth worst area** for air pollution in the country, according to Public Health England.

Each year around 36,000 premature deaths in the UK are linked to air pollution exposure – **that's 20 times more than deaths caused by road traffic accidents**.

Everyone in H&F – one of the most densely packed boroughs in the country – is affected by air pollution.

To make H&F cleaner, greener and safer we are cutting deadly nitrogen oxide (NOx) gases, reducing carbon emissions, while improving biodiversity and protecting nature.

What is the problem?

Pollution comes from the fumes and tyres of vehicles on our roads, the gas boilers in our buildings, and from the dust generated by construction work.

“We wouldn't drink dirty water, so why do we inhale dirty air?”



The following facts are very clear from public health experts around the globe:

- There is no safe level of air pollution.
- Dirty air causes cancer, strokes, heart disease and dementia.
- It is particularly bad for young children, stunting their growing lungs, damaging developing organs and affecting their brain development.
- It is also bad for the old, and those with pre-existing health conditions.
- And it affects those from our Black, Asian and wider minority ethnic groups, as well as those living on lower incomes.

We're working closely with the world-renowned experts at Imperial College London to understand and minimise these risks for local people.



CLEAN AIR NEIGHBOURHOODS



Residential streets in south Fulham see huge drop in vehicles as we cut toxic pollutants from our air

What are we doing?

H&F has committed to meeting the ambitious World Health Organization targets for air quality by 2030. Here are some of the actions we're taking to make H&F cleaner and greener:

- Reducing out-of-borough traffic cutting through our streets by introducing **Clean Air Neighbourhoods** in south Fulham.
- Planting more trees, including four new Tiny Forests in Hammersmith Park, Eelbrook Common, Frank Banfield Park, and Normand Park.
- Partnering with health and academic experts at Imperial College London and Imperial College Healthcare NHS Trust to create innovative solutions.
- Supporting the transition to electric vehicles with the densest network of charging points in the UK, while also encouraging car-sharing schemes.
- Reducing emissions from our buildings by replacing older boilers with clean heat networks and heat pumps, while helping residents and landlords upgrade to cleaner zero emission heat and power sources. ■

We have successfully worked with residents and businesses in south Fulham to **reduce congestion and pollution** in the streets to the east and west of Wandsworth Bridge Road.

We've installed smart technology cameras that prevent out-of-borough drivers – who are not stopping to work, shop or visit friends and family – from using our residential streets as cut-throughs. Local businesses have been given special permissions to allow their shoppers, staff and deliveries free access to the area, as normal.

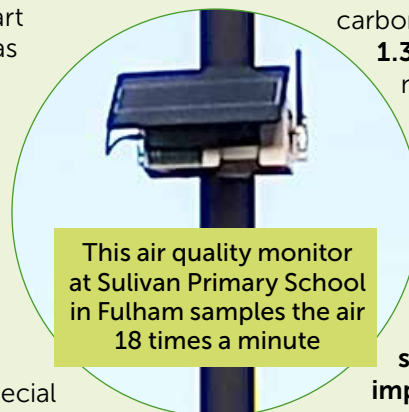
Now **15,000 fewer cars a day** are cutting through, clogging up and

polluting the side streets. The roads are **quieter and safer** for pedestrians and cyclists too, because of the reduction in traffic.

We've slashed an estimated **1.9 tonnes** of climate damaging carbon emissions and **1.35kg less** deadly nitrogen oxide (NOx) every day.

We've installed the largest air quality monitoring network in Europe, with the positive data confirming **significant air quality improvements** in south Fulham.

By working together we can improve the air we breathe and the health and wellbeing of everyone who lives in, works in, or visits our great borough.



This air quality monitor at Sullivan Primary School in Fulham samples the air 18 times a minute

CLEANER & SAFER IN SW6 >>

15,000
fewer cars cutting
through daily

1.9
tonnes of carbon
emissions slashed

1.35kg
less deadly nitrogen
oxide every day

How we're tackling cost-of-living pressures together



We are here to help everyone in H&F impacted by the cost of living.

You can find support, resources and guidance on our website. Visit: lbhf.gov.uk/cost-of-living

You will also find lots of helpful tips and support details here.



Warm Welcomes

H&F is supporting local organisations to deliver Warm Welcomes, open to anyone looking for somewhere to sit down, relax and enjoy free activities and refreshments while keeping warm.

To find out more, visit our website: lbhf.gov.uk/warmwelcomes

H&F Healthy Homes

Our H&F Healthy Homes bespoke service helps residents lower their energy bills through free energy efficiency measures and advice from Green Doctors.

To book a free consultation or home visit, please contact our partners at Groundwork on **0300 365 3005** or book online at london.greendoctors.org.uk

For questions and support, email: handfhealthyhomes@groundwork.org.uk

Hardship Prevention Fund

One-off awards are available to help households meet day-to-day essential living expenses like food, gas and electricity bills. You may be able to claim up to £900 if you need immediate financial support. Find out more: lbhf.gov.uk/hardship-fund

Someone you can talk to

H&F has a dedicated Cost-of-Living team who can discuss your current financial circumstances and provide help and advice with:

- Council tax
- Rent and discretionary housing payments
- Free school meals
- Hardship Prevention Fund and other available emergency financial support
- Clothing grants
- Support on home energy grants and bills

- Fuel bank vouchers
- Signposting to budgeting advice.

If you are Disabled, you may be eligible for a grant to adapt your home to improve accessibility.

If you're struggling to heat your home or buy food, we can help connect you to local organisations and council services who can help.

If you are an older person, you may be eligible for pension credit, food and fuel vouchers, advice on managing utility bills and fuel related debt, and hardship prevention support.

If you are a council tenant and need advice on benefits, grants or budgeting, please contact the H&F Welfare Benefits team on **020 8753 5566** or email welfare.benefit@lbhf.gov.uk ■



Call our Cost-of-Living team for free on **0800 917 6994**.
Lines are open 8am-5pm, Monday to Friday
Or email: costoflivingteam@lbhf.gov.uk



Your Christmas & New Year bin and recycling collections

**PULL OUT
AND KEEP
FOUR-PAGE
GUIDE**



HOW TO:



RECYCLE your real Christmas tree for free



SIGN UP to our new garden waste collections



BORROW from the Library of Things



RECYCLE your small electrical items

Collection days for the festive period

Use this quick reference guide to check your household recycling and rubbish collections this Christmas. As some collection dates will change, please keep this guide handy. All collection days will be back to normal by Monday 6 January.



Your normal collection day	Revised collection day
Monday 23 December	✓ Normal collection
Tuesday 24 December	✓ Normal collection
Wednesday 25 December Christmas Day	❗ Now Friday 27 December
Thursday 26 December Boxing Day	❗ Now Saturday 28 December
Friday 27 December	❗ Now Sunday 29 December
Saturday 28 December	❗ Now Sunday 29 December
Monday 30 December	✓ Normal collection
Tuesday 31 December New Years Eve	✓ Normal collection
Wednesday 1 January New Years Day	❗ Now Thursday 2 January
Thursday 2 January	❗ Now Friday 3 January
Friday 3 January	❗ Now Saturday 4 January
Saturday 4 January	✓ Normal collection
Monday 6 January	✓ Normal collection

TOP TIP: Prime numbers

Please number your wheelie bins. This makes it easier for our collection teams to return them to your property.

➔ Need a new wheelie bin or food waste caddy? Email newbins@lbhf.gov.uk



What happens to your food waste?

Your food waste is collected by our crews, who deliver it to a facility where micro-organisms break down the organic materials without the need for oxygen. This process is called 'anaerobic digestion'.



After 72 hours, biogas is produced and pumped into the power grid to provide renewable, clean energy to thousands of homes and businesses across the country.



Now that all the potential energy has been extracted from the waste, the leftover material is perfect for using as a high-quality fertiliser.

We give this fertiliser to farmers, helping them to grow food for your next Christmas and New Year celebrations.



Let's get recycling right this Christmas



Are you doing your bit? Here's your handy guide to recycling in H&F



YES PLEASE!

Place these items in your household recycling:



Mixed paper & card

Card, cardboard, paper (clean and dry; but no glitter please!)



Mixed glass bottles & jars

Glass bottles, jars (with lids placed loose in recycling)



Cartons

Cartons, Tetra Paks (squash and keep plastic lids on)



Plastic packing containers

Plastic bottles, tubs, trays, pots (squashed and lids placed back on)



Food tins & drink cans

Aluminium and steel tins and cans (clean and empty)

Top recycling tips

- Flatten cardboard boxes
- Rinse out bottles, jars and cartons
- Squash and keep the lids on bottles and cartons



NO THANKS!

Please don't put these items in your recycling:



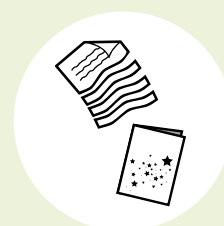
Black sacks

Black sacks should be used for general household waste only. Place in your black bin



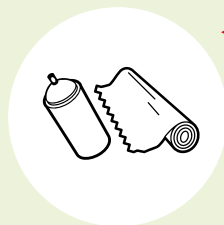
Food waste/ garden waste

Use the dedicated bins, if you have them, or try home composting



Shredded paper/ giftwrap & cards with glitter

Sadly these can't be recycled. Place in your black bin



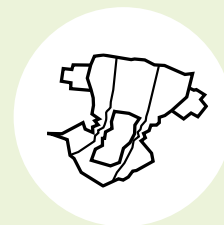
Aerosols/tin foil

For safety and contamination reasons these can't be recycled. Place in black bin



Textiles

Drop textiles off at H&F libraries, or find a textile recycling bank at lbhf.gov.uk/traid



Nappies

To prevent contamination of your recycling, nappies should go in black bins

SIGN UP! To our brand new garden waste collections

It's Cheap, Easy and Green. After 15 years without a garden waste service, we're aiming to make your collections as hassle-free as possible.

FIND OUT MORE:

lbhf.gov.uk/garden-waste



Borrowing is better than buying – for people & planet



Local residents have saved more than £700,000 by borrowing from the Library of Things in Hammersmith.

In June 2022 we helped launch the borrow-don't-buy hub for useful household gadgets and DIY tools in the Livat Hammersmith shopping centre, King Street.

Two years on, it has helped prevent more than 33 tonnes of waste – representing 97 tonnes of carbon emissions. With more than 200 visitors, and items loaned out every month from as little as £1.50 a day, borrowing is more and more popular.

Our Hammersmith site is now the best used hub of its kind anywhere in the country. It's a convenient way for residents to help us work to reduce carbon emissions from the things we buy, use, then throw away.

The King Street shopping centre also regularly hosts a variety of events to encourage the repair and reuse of household items, such as electrical items and clothes.

➔ GET STARTED

To sign up, just scan the QR code or visit: libraryofthings.co.uk/hammersmith



Don't forget to recycle your tree

Have your real Christmas tree recycled into compost – for free!

Free Christmas tree recycling collection

If you normally get an on-street rubbish collection, simply leave your tree where you'd leave your rubbish.

Please make sure your real tree:

- is clearly visible
- is not obstructing the pavement
- has had all decorations and pots removed.

Please put your tree out for collection before 7am on your regular collection day – from **2 January until 22 January** inclusive. Or take it to one of the drop-off points below.

Designated Christmas tree drop-off points

You can also take your tree to one of the designated drop-off points below.

Bishops Park, SW6

Next to café. Bishops Park Road/Stevenage Road entrance

Cathnor Park, W12

Next to play area, Greenside Road

Fulham Palace Road Cemetery, SW6

Opposite Queensmill Road

Loris Road Community Gardens, W12

Batoum Gardens

New Kings Road, SW6

On the edge of Eelbrook Common

Normand Park, SW6

Opposite Lillie Road entrance

Ravenscourt Park, W6

By football pitch, access by foot via Ravenscourt Park Road

South Park, SW6

Hard standing next to cricket nets, access by foot via Woolneigh Street

Wormholt Park, W12

Sawley Road entrance

Wormwood Scrubs car park, W12

Off Scrubs Lane

➔ FIND OUT MORE

Visit lbhf.gov.uk/rubbish, email cleaner.greener@lbhf.gov.uk or call 020 8753 1100. You can also book a free drop-off at our Western Riverside recycling centre, visit: wrwa.gov.uk

REAL TREES ONLY



How to recycle small electrical items

You can help us save money by recycling your unwanted or broken electrical appliances!

Why recycle?

Electrical appliances are mostly made of plastic and metal, with small amounts of many other substances, some of which may harm the environment. Reusing and recycling is the best way to reduce the environmental impact of these products.

Get your gadgets fixed

If your electrical appliance needs a fix, bring it to the Livat shopping centre in Hammersmith. The West Central London Fixers run regular repair cafes to get your electrical item working its best again. To book in a repair, visit: lbhf.gov.uk/e-repairs

Where to recycle

Some retailers will accept your small electrical appliances for recycling when you buy new ones. Visit the Recycle Now website (recyclenow.com) to find stores which offer a take-back service.

You can also bring your small electrical items to be recycled at one of the 14 small electricals banks across the borough (locations below).

Small electricals banks accept unwanted (working or broken) small, portable electrical items, for example: electrical tools, radios, hair dryers, kettles, computer keyboards, small laptops and mobile phones.

GOT A LARGER ITEM?

For tips on what to do with larger electricals, such as computers and washing machines, visit: lbhf.gov.uk/bulky-waste



Indoor recycling banks

You can recycle small electricals at libraries (also batteries/light bulbs):

Askew Road Library

87/91 Askew Road, W12 9AS

Avonmore Library and Community Centre

North End Crescent, W14 8TG

Fulham Library

598 Fulham Road, SW6 5NX

Hammersmith Library

Shepherds Bush Road, W6 7AT

Shepherds Bush Library

6 Wood Lane, W12 7BF



Outdoor recycling banks

Junction of Durrell Road and Fulham Park Road
SW6 5LQ

Junction of Dawes Road and Aintree Street
SW6 7QZ

Eelbrook Common
New Kings Road, SW6 4SG

Waitrose car park
Heckfield Place, SW6 5BE

Junction of Lillie Road and Everington Street
SW6 7PD

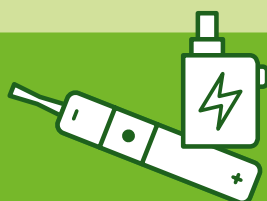


Junction of Munster Road and Kingwood Road
SW6 6AZ

Junction of Peterborough Road and Sulivan Court
SW6 3DL

North End Road
Near Lytton Estate, W14 0SJ

Uxbridge Road
Opposite Askew Crescent, W12 0NE



260m vapes are thrown away every year, but you can now recycle these at our libraries!



Recycling your old electricals would cut as much CO₂ as taking **1.3m** cars off the road



880m electrical items are lying unused in UK homes, when they could be reused or recycled

Free help with bills, debt advice, food costs and more



➔ Here's how to get other support and advice:

Help with money worries



Crosslight

Provides free debt advice, budgeting support and money management classes.

020 7052 0318 or email:
info@crosslightadvice.org

Citizens Advice

Hammersmith & Fulham

Free advice, information, and support.

0808 278 7832
cahf.org.uk

Nucleus Legal Advice Centre

Free legal help for money, welfare, housing and job issues.

020 7373 4005
nucleus.org.uk

StepChange

Offers debt support and help with budgets.

0800 138 1111
stepchange.org.uk

National Debtline

A national organisation that provides free, impartial debt advice, factsheets and an online budgeting tool.

Freephone 0808 808 4000
nationaldebtline.org

Money Helper

A national organisation that provides free advice on debts and benefits.

moneyhelper.org.uk

CAP London Fulham Reach Debt Centre

Free professional advice.

0800 328 006
capuk.org/i-want-help

Tax Aid

Free, independent tax advice for people on low incomes.

0345 120 3779
taxaid.org.uk

Help with food and hot meals



H&F Foodbank

Open every week across four locations. Offers free food parcels to residents in need upon referral.

020 7731 3693
hammersmithfulham.foodbank.org.uk

Barons Court Project, W14

Day centre for people on low income, or who are homeless and/or vulnerable to mental health issues. Residents in receipt of benefits can buy meals for £1, and showers, and laundry services are available for anyone homeless.

020 7603 5232
baronscourtproject.org

The Upper Room, W12

Offers free, hot meals every weekday between 4pm and 6pm to anyone in need, with toiletries and clothing often also supplied.

020 8740 5688
theupperroom.org.uk

Nourish Hub

Offers hot meals every weekday for a £3 donation, plus free cookery classes and breakfasts.

020 7967 1302
nourishhub.org.uk

Rose Vouchers

Helps families with children under five, and pregnant women, buy fresh fruit and veg from North End Road & Shepherds Bush markets. Check your eligibility for the voucher scheme on the website.

alexandrarose.org.uk



➔ Need more help?

Call our Cost-of-Living team for free on
0800 917 6994. Lines are open 8am-6pm,
Monday to Friday
Or email: costoflivingteam@lbhf.gov.uk



→ Get involved!

There are a huge number of ways you can get active in H&F and improve lives. Find out more below.



How to volunteer in H&F

You can share your skills, support your neighbourhood and meet new people through volunteering

From setting up a Neighbourhood Watch, becoming a Friend of your local park or joining a tenants' or residents' association, there are lots of ways you can get involved locally when it suits you.

Volunteering is also a great way to support your community, meet new people and share your skills.

You can learn more about options by speaking to the H&F Volunteer Centre.

Currently, we're looking for volunteers to join our Youth Justice Service. You'd work with young people to offer them help and support so they don't re-offend. This is challenging, but in the long run, very rewarding work.

→ FIND OUT MORE

Find out more about volunteering locally at: lbhf.gov.uk/volunteering



We can help you find your next job

We can help you find your next dream job. Just use our H&F Works employment service – it's completely free.

Our team offers one-to-one advice and guidance about finding work. We can connect you to local employers and help you write a CV and prepare for an interview. Support is available for all residents aged 16 and over.

→ FIND CURRENT OPPORTUNITIES

Check out all the current job openings, training opportunities and more here: hfworke.lbhf.gov.uk



Know a local hero?

Our annual Civic Honours awards are back! Now, we'd like you to nominate the inspirational local people who make the borough stronger, safer and kinder.

Each year, we honour the incredible local residents who give up their own time to help their community.

Whether it's a local legend who is running a sports team or youth group, or is supporting older neighbours by volunteering at a local charity, we want to hear from you.

Please nominate someone who lives, works, studies or volunteers in H&F. They can also help at any community group or charity in the borough.



Pictured above: Cllr Sharon Holder (left) congratulates Julie Cavanagh, manager at Sands End Adventure Playground and Association (SEAPIA), after being honoured at our awards this year.

→ NOMINATE NOW

Get nominations in by 20 January 2025, at: lbhf.gov.uk/civichonours



Want to get involved? Find out how you can help us shape our council services. Scan this code to get started



Turn your street into a party

The Play Street outside Melcombe Primary School in Hammersmith this summer.

Book a Play Street to create a free and fun outdoor playground and enjoy some time with your neighbours

Hosting a Play Street party in your road is now free and easy. So far this year, we've helped local neighbours hold more than 30 events on our roads. By closing your road to traffic for a few hours, you can create a community event on your doorstep for children and adults at no cost.

Getting started is easy. First, speak to your neighbours, let them know your plans and agree on a date and

time. Then, apply online to H&F for a free temporary road closure. Once approved, the rest is up to you – plan games, activities and entertainment to make your Play Street a hit.

➔ HOW TO BOOK A PLAY STREET

You can find more useful information and how to apply on our website: lbhf.gov.uk/playstreets



Learn a new skill



H&F's Macbeth Centre in Hammersmith is offering more than 100 courses to help you learn a new trade, skill or hobby.

From computer courses and language classes to arts and crafts, the wide range of courses includes job-focused training and fun classes for your free time.

It's all part of our commitment to provide local people with access to high-quality learning opportunities for work, skills and hobbies.

Visit us in Macbeth Street, just off King Street, to find out more about our new term, starting in January.

➔ ENROL NOW

Call 020 8753 3600 or enrol online at: hfals.ac.uk



Get help with business

If you run a business, or are thinking of starting your own locally, our business support team can help you succeed.

Contact our Business Helpdesk to find out about the free and paid-for services available, email: business-support@lbhf.gov.uk. Or connect with one of our specialist business advisers at our 1-2-1 advice clinics.

You can also sign up for our monthly Business Connects newsletter – a free resource highlighting the support on offer.

Want to speak to local creative business owners? Visit our Made



in H&F pop-up Christmas shop in the Hammersmith Broadway shopping centre. You can browse all their products and ask about how they launched their creative business.

➔ GET SUPPORT

To get business support help, visit: lbhf.gov.uk/business



CHRISTMAS QUIZ!

Do you know your borough?
Test your brain power on these
40 questions for fun. Happy Christmas!



LOCAL KNOWLEDGE

1 What was the original name of Shepherds Bush?

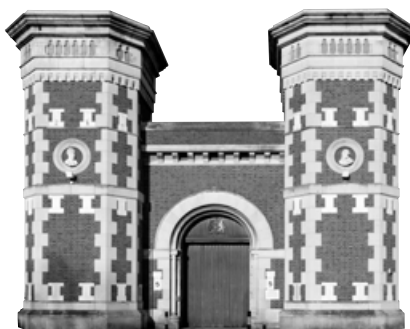
- A Gagglegoose Green
- B Brook Green Fields
- C North Brackenbury
- D Goldhawk Village

2 King Street, Hammersmith, is officially which road number?

- A A214 C A315
- B A219 D A366

3 Who built Wormwood Scrubs prison in 1874?

- A Volunteers from the Howard League
- B A working party of Quakers
- C Staff of the Manor of Fulham
- D A group of convicts



4 How did Goldhawk Road get its name?

- A It was an early centre for the jewellery trade
- B A statue of a golden eagle once stood at the junction with Shepherds Bush Green
- C It was named after a local landowner
- D 'Goldhawks' were money lenders, and the street had many of them

5 The oldest part of Fulham Palace dates from:

- A 1380 B 1480 C 1580 D 1680



6 How many shops are in Hammersmith Broadway Shopping Centre?

- A 49
- B 59
- C 69
- D 79



7 How many laundries existed in and around Becklow Road in 1900?

- A 25 B 47 C 62 D 91

8 Wormwood Scrubs jail gatehouse contains a bust. Of who?

- A William Gladstone
- B Elizabeth Fry
- C Queen Victoria
- D Benjamin Disraeli

9 Which of these Hammersmith structures is **not** yet listed?

- A Hammersmith Fire Station
- B Hammersmith Police Station
- C The phone box by Hammersmith Bridge
- D Bishops Park tea room

10 The earliest surviving piece of stoneware from the old Fulham Pottery is what?

- A A mug
- B A bottle
- C A figurine of a young woman and a goat
- D A serving plate



MUSIC

Want to try this
quiz online or share
with your friends?
Scan this QR code



11 A film about the rap group Kneecap was screened at Riverside Studios, Hammersmith, in the summer. What nationality are Kneecap's members?

- A Scottish
- B Welsh
- C Canadian
- D Irish



12 In 1973 David Bowie played his last gig as Ziggy Stardust at Hammersmith Odeon, now Eventim Apollo. Which song **didn't** he play?

- A Love Me Do
- B Land of Hope and Glory
- C Let's Spend the Night Together
- D The Man Who Sold the World



14 Name the record shop at 304 Uxbridge Road

- A Next Door Records
- B Bush Sounds
- C Reckless Records
- D Flashback

15 Which iconic band reformed to play gigs this year to help Bush Hall?

- A Black Sabbath
- B Notorious
- C The Sex Pistols
- D Mayhem

13 What is the name of the music venue at Chelsea's stadium?

- A Canaletto's
- B Below the East
- C Osgood's
- D Under the Bridge

16 Which stage and screen sensation – known for her iconic rendition of Santa Baby and groundbreaking Sunday Night Theatre broadcast live from Riverside Studios in 1956 – was immortalised with a blue plaque in Hammersmith this year?

- A Esther Bruce
- B Eartha Kitt
- C Fanny Eaton
- D Edmonia Lewis

17 Which choir sang Bach's St John Passion in the original German at Holy Cross, Fulham, in March?

- A Fulham Camerata
- B Fulham & Hammersmith Choral Society
- C Addison Singers
- D The German Choir of London

18 In August 1974 the Shepherds Bush Empire (and the whole of Shepherds Bush Green) was besieged by fans of which singer?

- A David Cassidy
- B David Bowie
- C Donny Osmond
- D Michael Jackson

19 In which year was Hammersmith Palais, originally located at 242 Shepherds Bush Road, demolished?

- A 1997
- B 2002
- C 2006
- D 2012



20 This year's Notting Hill Carnival launched with a free reggae night at O'Donoghue's, Goldhawk Road. Charlie B was one of the local DJs, but who was the other?

- A Daddy Long Legs
- B Soul Hand Spider
- C Cool Hand Geoff
- D Beyond The Beats



CULTURE

21 Actress Miriam Margolyes held the stage this summer at the Eventim Apollo at the age of 83. Where was she born?

- A Oxford
- B Budapest
- C Sydney
- D Norwich



23 A new theatre opened near The Ark office building in Hammersmith. What is its name?

- A Gruff
- B Scrum
- C Goldfish
- D Talgarth

24 Which pub hosts Hammersmith Comedy Club?

- A The Hop Poles
- B The Swan
- C The Crabtree
- D Brook Green Hotel

22 When did the first Lyric Theatre open in Hammersmith?

- A 1792
- B 1831
- C 1888
- D 1901

25 The Leaning Woman sculpture on the A4 at Hammersmith has just been restored. What nationality was sculptor Karel Vogel?

- A Russian
- B Czech
- C Latvian
- D Estonian

Quiz continues over



CULTURE CONTINUED

26 A free health and wellbeing event for the Black community was staged in Hammersmith in May. On which day?

- A Martin Luther King Day
- B Windrush Day
- C International Women's Day
- D Mother's Day

27 A blue plaque was unveiled during Black History Month to mark the fact that Black trailblazers including Malcolm X, Jomo Kenyatta, Ladipo Solanko and Marcus & Amy Garvey lived, at various times, in the same house. In which street?

- A Comeragh Road
- B Beryl Road
- C Greyhound Road
- D Castletown Road



28 How deep was the stage of Fulham's Granville Theatre, which operated from 1898-1956?

- A 6 metres
- B 14 metres
- C 2 metres
- D 9 metres



29 Which radio programme broadcast from the Sands End Arts & Community Centre in March this year?

- A I'm Sorry I Haven't a Clue
- B Gardeners' Question Time
- C Just a Minute
- D Brain of Britain

30 Midwife and equality champion Yvonne Insh won a Lifetime Achievement Honour in the 2024 H&F Civic Honours. How old is Yvonne?

- A 56
- B 66
- C 76
- D 86

SPORT

31 Which sport did **not** feature in the 1908 Olympics in White City?

- A Standing long jump
- B Duelling with wax bullets
- C Water polo
- D Billiards



32 Fulham reached the FA Cup final in 1975. Who did they eventually lose to?

- A Tottenham Hotspur
- B West Bromwich Albion
- C West Ham United
- D Liverpool

33 Who has **never** been a Chelsea shirt sponsor?

- A Gulf Air
- B Bai Lin Tea
- C Commodore
- D Nintendo

34 Which QPR manager had the highest win rate?

- A Ted Vizzard
- B Dave Sexton
- C Gordon Jago
- D Terry Venables

35 Who won Manager of the Year at the 2024 FIFA Football awards, staged at the Eventim Apollo, Hammersmith?

- A Jurgen Klopp
- B Pep Guardiola
- C Mikel Arteta
- D Nuno Espirito Santo

36 Who did Fulham boxer Zak Chelli defeat to become British and Commonwealth super-middleweight champion in January 2024?

- A Jack Cullen
- B Chris Eubank Jr
- C Carlos Adames
- D Tyler Denny

37 In the 2024 New Year Honours, Chelsea Women's captain Millie Bright was made what?

- A MBE
- B OBE
- C CBE
- D Dame Grand Cross

39 How much do H&F residents pay for off-peak swimming at Fulham Pools?



- A £2.55
- B £3.10
- C £4.50
- D £5.25

40 What was the profession of 1908 White City Olympic marathon runner Dorando Pietri?

- A He managed a restaurant
- B He was a policeman
- C He taught Italian
- D He made sweets



38 Where do Shepherd's Bush Cricket Club play home matches?

- A Shepherd's Bush Green
- B Bromyard Avenue
- C Wormholt Park
- D Stamford Brook Road



➔ **HOW DID YOU DO?** Answers on page 23.

Will you get full marks?

Our pubs are the lifeblood of our community. Many keep people entertained year round with their regular quizzes. Here's how quiz night works at **The Stonemasons Arms** in Hammersmith



Top and inset: Quiz night at The Stonemasons Arms, with quizmaster Tony below.

There's no better way to beat the winter blues than joining friends at the pub for a good old-fashioned quiz. With more than 100 pubs and bars across H&F, there's no shortage of opportunities to test your trivia knowledge.

At The Stonemasons Arms in Glenthorne Road, Hammersmith, the weekly general knowledge quiz is a Wednesday night staple for many.

"Most of our quizzers are locals," says bar supervisor Sylwia Staron. "They swap answers, end up chatting and making new friends. It really brings the community together." She says the quiz has grown increasingly



popular over the years thanks to regular quizmaster, Tony. "Tony does a really great job, and people keep coming back specifically for his quizzes. Sometimes Wednesday is our busiest night," she explains.

As well as a first prize of a £50 bar tab, and bottle of wine for the best team name, there's also a 'golden question' with an accumulating prize fund. The jackpot has hit £400. With a £2 entry fee, the Stonemasons' quiz is an affordable, fun night out. And for Dry January there are plenty of non-alcoholic options. ■

GREAT LOCAL PUB QUIZZES

➔ **Test your knowledge!**

EVERY TUESDAY

Princess Victoria W12, **7.30pm**
The Brown Cow SW6, **7.30pm**
The Durell Arms SW6, **8pm**
The Pocket Watch W12, **8pm**
The Mitre SW6, **8pm**

EVERY WEDNESDAY

The Stonemasons Arms W6, **8pm**

EVERY THURSDAY

The Crown & Sceptre W12, **7.30pm**
Hop Poles W6, **7.30pm**
The Duchess W12, **8pm**
The Cross Keys W6, **8.15pm**

EVERY SUNDAY

The Temperance SW6, **6.30pm** – a talkSPORT special!
Famous Three Kings Fulham W14, **6.30pm**
The White Horse SW6, **7pm**
The Distillers W6, **7pm**



Q&As at The Stonemasons Arms.

Christmas Quiz answers (pages 20-22)

1 Gagglegoose Green 2 A315 3 A group of convicts 4 It was named after a local landowner 5 1480 6 49 7 62 8 Elizabeth Fry 9 Bishops Park tea room 10 A mug 11 Irish 12 The Man Who Sold the World 13 Under the Bridge 14 Next Door Records 15 The Sex Pistols 16 Eartha Kitt 17 Fulham Camerata 18 Donny Osmond 19 2012 20 Daddy Long Legs 21 Oxford 22 1888 23 Scrum 24 The Swan 25 Czech 26 Windrush Day 27 Castletown Road 28 2 metres 29 Gardeners' Question Time 30 76 31 Billiards 32 West Ham United 33 Nintendo 34 Ted Vizzard 35 Pep Guardiola 36 Jack Cullen 37 OBE 38 Bromyard Avenue 39 £2.55 40 He made sweets

What's On

Here's a sneak peek at all the Christmas fun happening this holiday season



Wednesday 11 December

All Jokes Aside Christmas Special at Kindred

Prepare for a comedy special that'll have you laughing till your sides ache, no matter who takes the stage.

wearekindred.com

Wednesday 11 December



Carol concert at Holy Trinity Church

Featuring broadcasting legend Angela Rippon, as well as magical carols and an exclusive post-concert reception, the Age UK Hammersmith & Fulham Carol Concert will raise vital funds for older people in the borough.

lbhf.gov.uk/age-uk-carols

Thursday 12 December

The Palace at Christmas at Fulham Palace

Immerse yourself in the rich history of Christmas traditions at the Palace, from the opulent feasts of the Tudor period to the heartwarming carols of the Victorian era.

fulhampalace.org

Saturday 14 & Sunday 15 December

Father Christmas at Fulham Palace

Children can join the elves in crafting a special Christmas keepsake before meeting Father Christmas in the historic library for a photo and a special gift.

fulhampalace.org



14 & 15 December
Meet Father Christmas at Fulham Palace.

Saturday 14 December

Jazz Christmas Around the World at Jazz Café POSK

An evening filled with festive favourites and jazzy Christmas classics in English, Polish, Spanish, Italian and other languages – ending in an audience Christmas singalong.

jazzcafeposk.org

Saturday 14 December



A Winter's Day and Night at St Peter's Church

Let the Petros Singers take you away with a candlelit, mulled wine and mince pie-filled evening of both winter and Christmas classics.

petrossingers.org

Sunday 15 December

Holy Trinity Brompton Carols at O2 Empire Shepherd's Bush

Expect an evening of Christmas carols and festive cheer for what's set to be a spectacular sing-along carol concert.

academymusicgroup.com/o2shepherdsbushempire

Saturday 14 & Sunday 15 December

Christmas films in concert at Eventim Apollo

14 December, The Muppet Christmas Carol in Concert. 15 December, Love Actually in Concert. Watch your favourite festive films with the original score performed by a live orchestra.

eventimapollo.com

Monday 16 to Sunday 22 December

Deck The Stalls at Riverside Studios

Deck The Stalls is a blisteringly funny new play for anyone who has had to endure the 'There's no washing up fairy' posters and passive-aggressive office lunchroom sticky notes.

riversidestudios.co.uk

GET 25% OFF!
Use the code **DECKOFF25** to claim discounted tickets for **Deck The Stalls**



18 December
Tiny tots get into the groove



19 December
A spread at Nourish Hub



14 December
Family movies with live orchestra

Tuesday 17 to Saturday 21 December

A Christmas Carol at Barons Court Theatre

Come watch Charles Dickens' beloved classic on stage. Live the magic of Christmas in one of the most intimate theatres in London.
baronscourttheatre.com

Wednesday 18 December

Little Birdsong Concert Christmas Special at Music House for Children

Designed for babies and young children together with their families and loved adults. Enjoy a live performance in a relaxed setting, where babies and toddlers can have fun exploring, babbling along to live music and interacting directly with musicians.
musichouseforchildren.com

Thursday 19 December

Festive Community Supper Celebration at Nourish Hub

Residents and families, previous cookery course participants, and old and new supporters are invited to a Christmas donate-as-you-dine meal.
nourishhub.org.uk

Friday 20 December



Community Christmas Meal at Sands End Arts & Community Centre

Join for a community Christmas meal and some festive cheer at Sands End Arts & Community Centre.
seacc.uk

Until Friday 20 December

Christmas Wreath-Making Workshops at Shepherd's Bush Market

Learn how to make a stunning Christmas wreath. This festive workshop will not only teach you a new skill – you will also get to keep and proudly display your beautiful wreath.

lbhf.gov.uk/wreath-making



Friday 20 & Saturday 21 December

A Staged Reading of 'Small Things Like These' at the Irish Cultural Centre

Claire Keegan's Booker Prize-nominated novel is brought to the stage with Andrew Bennett (The Quiet Girl/An Cailín Ciúin), with new music by Eleanor McEoy (A Woman's Heart). Small Things Like These is set in an Irish rural town in the 1980s in the run up to Christmas.
irishculturalcentre.co.uk

Until Sunday 22 December

Santa's Grotto at Livat Hammersmith

Visit the big man in red for free at his grotto in Livat. Every child will get a 'colourful' gift from Santa to take home.
livat.com

Monday 23 December

Aurie Styla's Christmas CrackUp at Bush Hall

Back for another year, Aurie brings comedy and DJ friends, crowd games and £100s worth of prizes, including games consoles, clothing, bottles of bubbly and more.
bushhallmusic.co.uk

Until Sunday 22 December

London illuminated light trail at Fulham Palace

Enjoy a festive walk through the Palace's illuminated garden, with boutique shopping, fire pits for toasting marshmallows, and a selection of delicious food and mulled wine. Enjoy captivating performances, including mesmerising circus displays and live magic, along with live music to set the mood.
fulhampalace.org

TOP PICK



WHAT'S ON



24 December
Take your seats for joyful films



Until 5 January
Get your skates on in W12



Until 28 December
A Raymond Briggs classic at The Lyric

Until Tuesday 24 December

Christmas films at Riverside Studios

The Riverside is showing a selection of Christmas favourites on the big screen throughout December, including The Polar Express, Home Alone, Elf, It's A Wonderful Life and Die Hard.

riversidestudios.co.uk

Wednesday 25 December



H&F Christmas Day Lunch at Novotel London West

A great festive day out with food, music, gifts and dancing for residents who otherwise would be celebrating alone. You can donate to help make it happen.

lbhf.gov.uk/bigchristmaslunch

Until Saturday 28 December



Raymond Briggs' Father Christmas at Lyric Hammersmith Theatre

Christmas isn't Christmas without this Lyric family favourite play. Join Santa as he awakes from a dream of sun, sea and sand only to find it is the busiest day of the year: Christmas Eve. Suitable for children under 6 years old.

lyric.co.uk

Until Sunday 5 January

The Ice Rink at Westfield London

The most magical time of the year is fast approaching, and what better way to celebrate than with the return of Westfield London's iconic ice rink.

westfield.com

PLAY OUR CHRISTMAS QUIZ ONLINE!

Test your brain power in our popular annual Christmas quiz about Hammersmith & Fulham



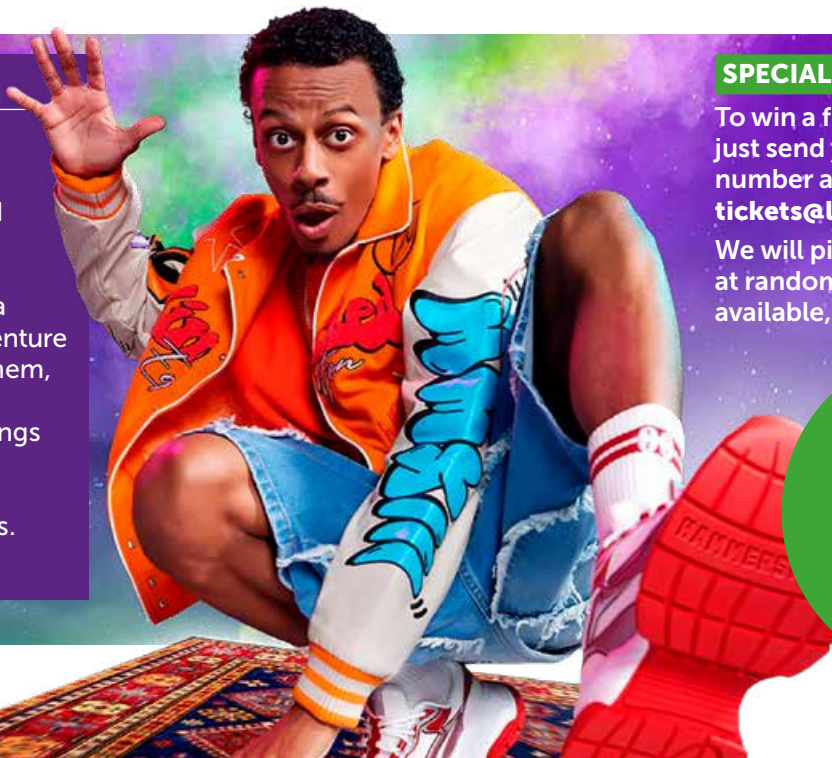
Want more local listings? Get our e-newsletter

Our monthly What's On e-newsletter is a snapshot of our busy borough and the best days and nights out in H&F! Scan the QR code to sign up.

Until Sunday 5 January

Aladdin at Lyric Hammersmith Theatre

Buckle up for a whirlwind ride above the streets of Hammersmith as Aladdin and Jasmine embark on a hilarious, high-flying adventure packed with magic, mayhem, and mischief. The Lyric is hosting accessible showings in December, including British Sign Language interpreted performances. lyric.co.uk



SPECIAL OFFER!

To win a free pair of tickets, just send your name, mobile number and "PANTO" to tickets@lbhf.gov.uk

We will pick winners at random. Three pairs available, usual rules apply.

FREE!
Win Lyric panto tickets



Father Christmas at Fulham Palace

Sat 14 & 15 Sun Dec • £25.00

Father Christmas is visiting Fulham Palace! Craft with the elves, meet Father Christmas, share your holiday wishes, and take home a special gift.

Scan the QR code to learn more and to book.



Follow us!

Never miss
a thing in H&F

X @LBHF

f HammersmithandFulhamCouncil

ig @hfcouncil

🦋 @hfcouncil.bsky.social

n Nextdoor 🗨 WhatsApp

Find all our
social media
accounts here:





Need to get a weight off your shoulders? Let's talk



Reach out to us if you're feeling low, there are services that can offer advice and assistance.
Please visit:
lbhf.gov.uk/reach-out



it's ok not to be ok

We urgently need **foster** carers for babies




Foster *with* WEST LONDON



Funded by
UK Government

fosterwithwestlondon.org.uk 020 8753 1075

SIGN UP! TO OUR BRAND NEW GARDEN WASTE COLLECTIONS

Three reasons why it's great:

1. HASSLE FREE

recycling for those who love their gardens

2. BOOSTS

the amount of garden waste we send for composting

3. At just £1.84 a week it's



MUCH CHEAPER than private companies

Our BEST VALUE way to collect garden waste is here!

We are now providing a **brand new service**, aimed at making your garden waste collection as hassle-free as possible. Our new weekly service will **collect and recycle** your green waste (grass cuttings, leaves, twigs/sticks, prunings, cut flowers and fallen fruit) for only £90 per year.

CHEAP

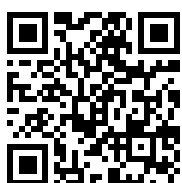
This service is just **£1.84 per week**

EASY

We pick up your waste **every week**

GREEN

Your waste will be **TRANSFORMED** into fertiliser that helps grow flowers, plants and crops



After 15 years without a garden waste service, you can now sign up to our

HASSLE FREE new service

<< Visit lbhf.gov.uk/garden-waste or scan this QR code

h&f
hammersmith & fulham