



Plan Scale 1:500

### Stable Block

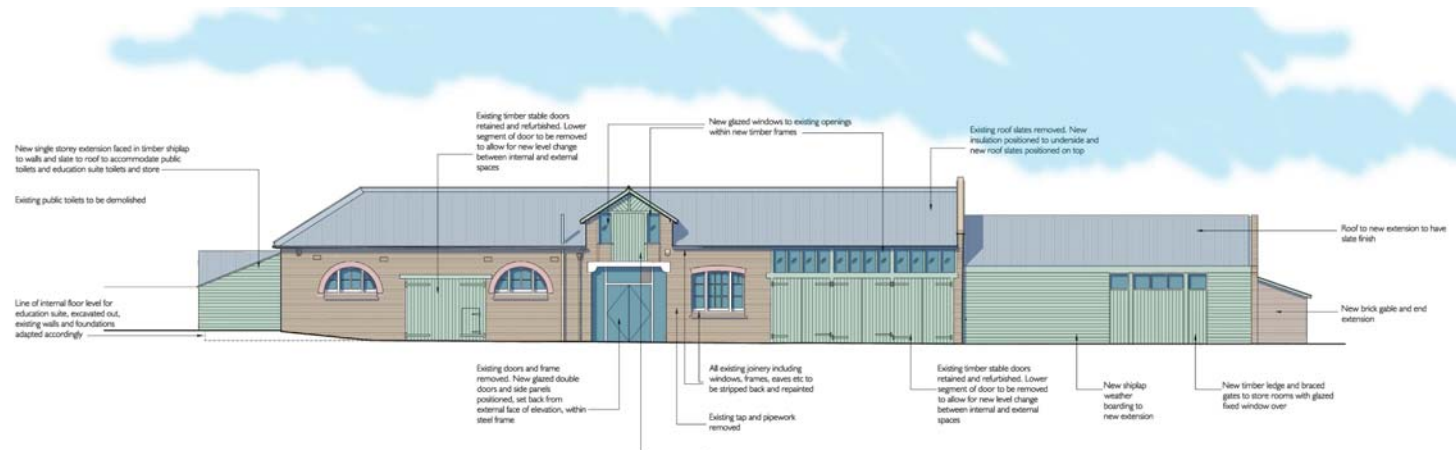
The stable block as it stands was built to replace the late Georgian (but possibly incorporating an original Tudor) building following a fire in 1873. The current use of the building is mainly storage although some areas are derelict. It is Grade II Listed. The refurbishment of the stable block will provide the following:

- a) Entrance and introductory gallery;
- b) Multi function education rooms for 30-60 people with toilets and storage;
- c) Accessibility for all users;
- d) Rooms will contain a 'sense of history' together with producing a modern, multi usable space; and
- e) Office space for education staff.

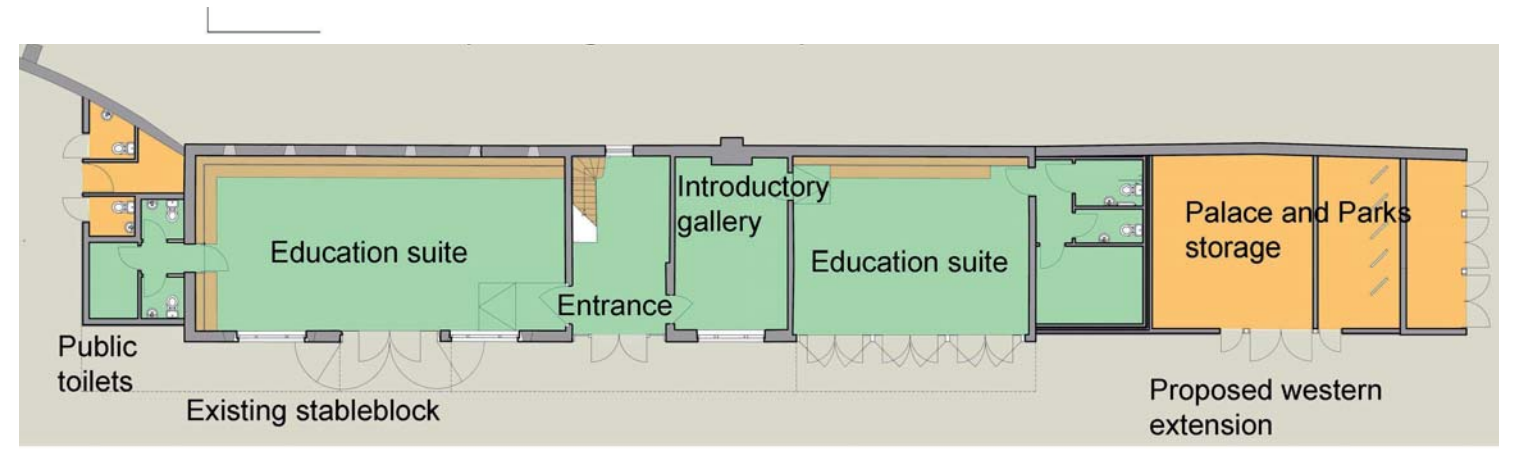
To the west, an extension will contain Park and Palace storage and a cycle store. To the east, new public toilets will be provided to replace the existing. The existing fabric of the building is brick with slate roof, with timber stable doors and Diocletian windows. These will be retained, with new glazed doors and screens positioned within the door openings to allow natural light to flood the internal spaces when the stable doors are open. The new side extension will be clad in timber to complement the original stable block design.



Existing Stableblock



Front Elevation



Groundfloor Plan