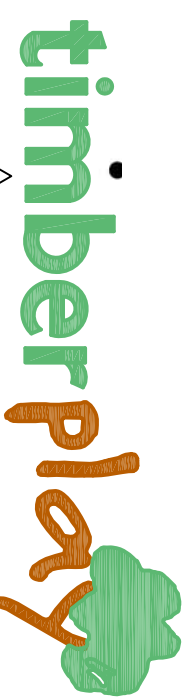
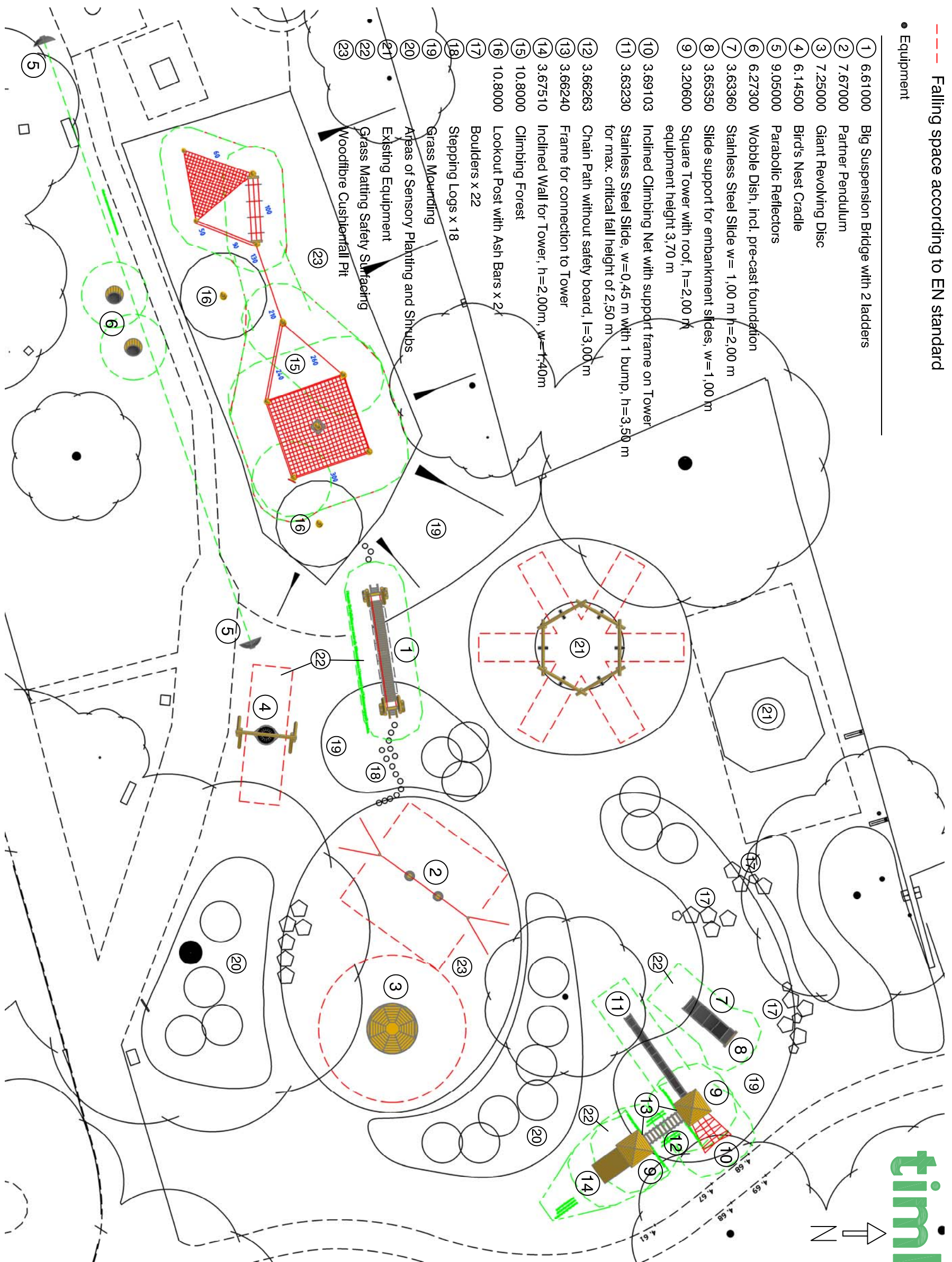


- Ground plan, scale 1:250

--- Falling space according to EN standard

• Equipment

- ① 6.61000 Big Suspension Bridge with 2 ladders
- ② 7.67000 Partner Pendulum
- ③ 7.25000 Giant Revolving Disc
- ④ 6.14500 Bird's Nest Cradle
- ⑤ 9.05000 Parabolic Reflectors
- ⑥ 6.27300 Wobble Dish, incl. pre-cast foundation
- ⑦ 3.63360 Stainless Steel Slide w = 1,00 m h = 2,00 m
- ⑧ 3.65350 Slide support for embankment slides, w = 1,00 m
- ⑨ 3.20600 Square Tower with roof, h = 2,00 m equipment height 3,70 m
- ⑩ 3.69103 Inclined Climbing Net with support frame on Tower
- ⑪ 3.63230 Stainless Steel Slide, w = 0,45 m with 1 bump, h = 3,50 m for max. critical fall height of 2,50 m
- ⑫ 3.66263 Chain Path without safety board, l = 3,00 m
- ⑬ 3.66240 Frame for connection to Tower
- ⑭ 3.67510 Inclined Wall for Tower, h = 2,00m, w = 1,40m
- ⑮ 10.8000 Climbing Forest
- ⑯ 10.8000 Lookout Post with Ash Bars x 2x
- ⑰ Boulders x 22
- ⑱ Stepping Logs x 18
- ⑲ Grass Mounding
- ⑳ Areas of Sensory Planting and Shrubs
- ㉑ Existing Equipment
- ㉒ Grass Matting Safety Surfacing
- ㉓ Woodfibre Cushionfall Pit



**Important note for customers!**  
The contractor has to check on site if all conditions (required space existing space etc.) for the installation of the equipment are ensured, also supply pipes (in ground or overhead cables) and other conditions have to be observed.

**Recommendation for the installation of slides:**  
Do not install slides with sliding direction between southeast and southwest, because of heating up the material - if it is not possible, shading of the slide has to be ensured by suitable means.

**COPYRIGHT:**  
All rights to the design and equipment lie with timberplay Ltd. and Richter Spielgeräte GmbH

London Borough of  
Hammersmith and Fulham

Project  
Ravenscourt Park

Revision 3

Equipment  
Richter Spielgeräte GmbH  
Copyright 2006  
Combination  
Ground plan

1:250 @ A3  
19/01/10 CR  
Page: 1-1