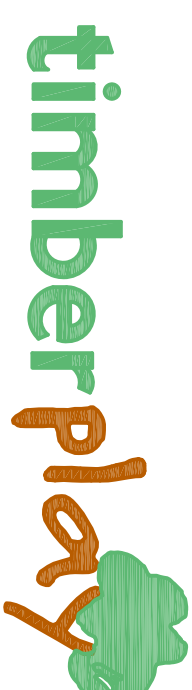
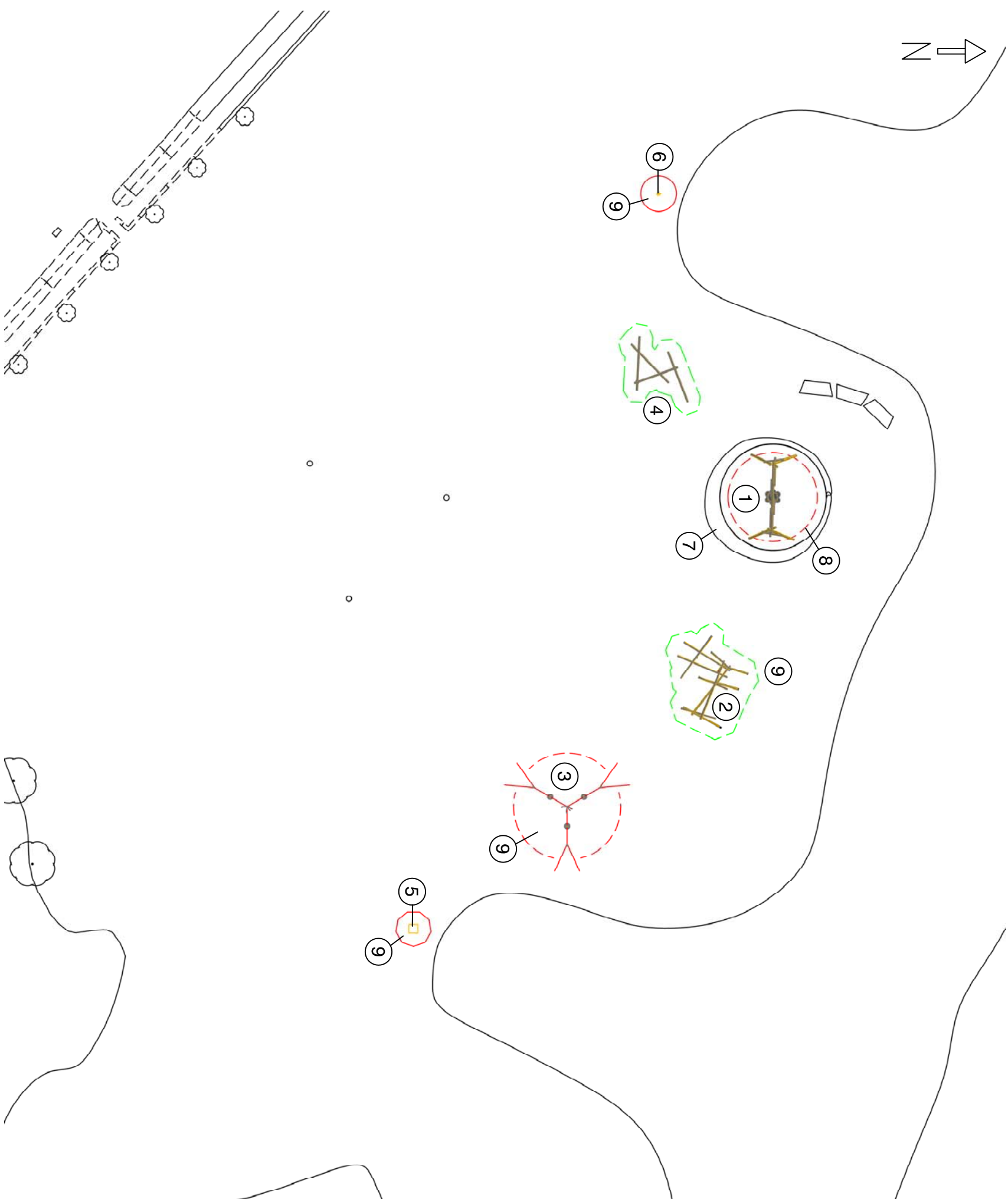


- Ground plan, scale 1:500

--- Falling space according to EN standard

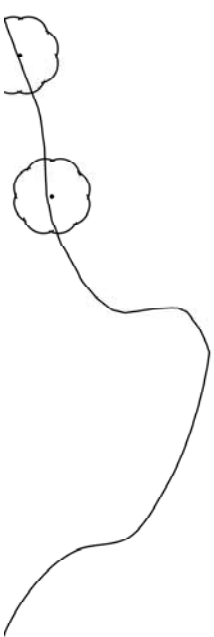


• Equipment

- ① 7.52000 See-Saw-Carousel-Swing
- ② E6.50000 Timberwood Tangle - Type 1
- ③ 7.68000 Queen Swing
- ④ 6.50600 Jackstraws See-saw
- ⑤ 10.80000 Square Lookout Posts
- ⑥ 10.80000 Ash Bars Lookout Post
- ⑦ Grass Mounding
- ⑧ Woodfibre Cushionfall Pit
- ⑨ Grass matting safety surfacing

**Important note for customers!**  
The contractor has to check on site if all conditions (required space existing space etc.) for the installation of the equipment are ensured, also supply pipes (in ground or overhead cables) and other conditions have to be observed.

**Recommendation for the installation of slides:**  
Do not install slides with sliding direction between southeast and southwest, because of heating up the material - if it is not possible, shading of the slide has to be ensured by suitable means.



London Borough of  
Hammersmith and Fulham

Project  
Wormwood Scrubs Park  
Design 2

Equipment  
Richter Spielgeräte GmbH  
Copyright 2006  
Combination  
Ground plan