

MPA METROPOLITAN POLICE AUTHORITY

POLICING IN HAMMERSMITH & FULHAM

How are your local police performing?

The Metropolitan Police Authority regularly monitors how well London's police are performing to ensure our communities receive the most efficient and effective service.

Total recorded crime in London for 2008/09 is at a ten year low and remains under 900,000 crimes for the second consecutive year. Detection rates continue to rise.

How did Hammersmith & Fulham perform during 2008/09?

- Residential Burglary down 229 offences
- Robbery down 178 offences
- Theft of vehicles up 29 offences
- Theft from vehicles down 708 offences
- Youth violence down 71 offences
- Knife crime down 95 offences
- Gun crime down 34 offences.

Total recorded crime in Hammersmith & Fulham is down 1.7% – that's 390 fewer crimes.

Priorities for 2009/10

Hammersmith & Fulham will be focusing on:

- Reducing most serious violence by 4.9%
- Reducing serious youth violence by 4.7%
- Reducing knife crime by 5.0%
- Ensuring gun crime does rise above the current level
- Reducing serious acquisitive crime by 2.8%.

Have your say

Are the police focusing on the issues that are important to you? Make sure you have your say on policing in London by taking part in the consultation for the 2011/12 London wide policing priorities. Fill in the questionnaire and let us know what you think.

www.mpa.gov.uk/publications/policingplans

Find out more about policing in your borough at:

www.mpa.gov.uk/partnerships/boroughs

or call the MPA on 020 7202 0202

SPECIAL REPORT



KNOW THE DRILL: Residents of the Queen Caroline estate are braced for Thames Water works

QUEEN CAROLINE RESIDENTS FEAR SUPER-SEWER WORK NIGHTMARE

RESIDENTS are calling on Thames Water to come clean on plans for super-sewer construction sites after it emerged homes could potentially be at risk.

Thames Water wrote to residents along Queen Caroline Street, Hammersmith, in June to say that work to drill 'bore holes' was scheduled to start yesterday (July 13).

The underground testing, near Alexandra House and Charlotte House, is needed to identify a route for the £2.2-billion pipe under the Thames. The tests could also help dictate where construction sites for the Thames tidal tunnel, dubbed super-sewer, could go in the future.

Queen Caroline estate resident Julia Clowes said: "The letter is the first residents have heard from Thames Water.

"Most of my neighbours agree that these works are not on. The area they have targeted is a lovely green space that is well-used by residents. People are worried and Thames Water needs to be much more open with local people about their future plans."

Two much-loved Hammersmith parks – Furnivall Gardens and Frank Banfield Park – have already gone under the Thames Water drill – but this is the first time

residents' homes have been the site of works. Two other locations, including one close to Verbena Gardens and another next to the A4/Talgath Road, are also being targeted by the utility giant.

Residents' concerns were magnified when a Thames Water mail-out made it clear that, although unlikely, land with houses on it is not being ruled out for potential future construction sites.

Eventually, Thames Water will need to dig a 30-metre-wide entry point – half the size of a football pitch – for the 18 mile-long mega pipe.

The company claims that the tunnel – which will be bigger than the Eurotunnel and could fit two double-decker buses inside – will prevent some sewage from flowing into the river when it rains heavily.

In addition to a possible entry point, there could be a number of smaller connecting shafts – about 10 metres wide – in H&F. Thames Water hopes these construction sites will be within 500 metres of the river but has admitted this could be extended.

The six exploratory boreholes – including the one on the Queen Caroline estate – are used to test deep beneath the surface.

Thames Water officials have previously claimed

that the bore holes have no bearing on the building sites that will be needed to construct the super-sewer, but concerns from residents have still been raised.

Raj Bhatia, chairman of Stamford Brook Residents Association, said: "This is a fundamental step for Thames Water to take.

"They would not be drilling bore holes in these areas if they didn't believe the tunnel could go via this route."

Bosses at H&F Council had blocked the utility company from digging the holes, but Thames Water's lawyers persuaded West London magistrates to give them a warrant allowing them to test conditions underground.

A Thames Water spokesperson said: "We are working in partnership with H&F's environmental health officers to ensure our work has minimal impact on our customers.

"To minimise the length of time we work in the area, we have applied to the borough to work 24 hours a day in two locations along the river. If the application is successful, we will inform all nearby residents by letter at least one week before work commences. Customers can also call our 24-hour customer centre on 0845 641 0011, quoting Thames Tunnel."

Rob Mansfield

BASEMENT FLOODING MEETING ON HOLD

THAMES Water officials have postponed a public meeting where they were expected to explain plans to minimise basement flooding in the borough.

The meeting, which was due to take place at Hammersmith Town Hall on July 20, has been delayed until September – as the utility giant waits to hear about funding arrangements from

the water regulator Ofwat.

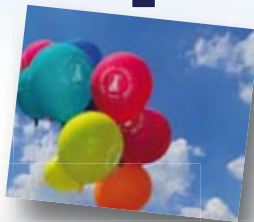
Thames Water officials were expected to provide an update on proposals for works to the Counters Creek area.

The firm's bosses faced a flood of outrage from the residents of Askew Road, Boscombe Road, Greyhound Road and Hammersmith Grove at a council-run scrutiny meeting last year.

Householders were astonished when told the £2.2 billion super-sewer will do 'absolutely nothing to alleviate flooding in the borough'.

Explaining its decision to cancel the meeting, a Thames Water spokesman said: "To hold the meeting three days before receipt of the draft determination from Ofwat is not the most practical timing."

The Mayhew Open Day 2009



Gift stalls
Barbecue
Meet the animals
Refreshments
Tombola
Face painting
Live entertainment
Information & advice

Adults £2.00, children £1.00
Senior citizens £1.00, under 5's free
Families (2 adults and 2 children) just 5.00

Sunday 12-4pm 19th July



The Mayhew Animal Home & Humane Education Centre

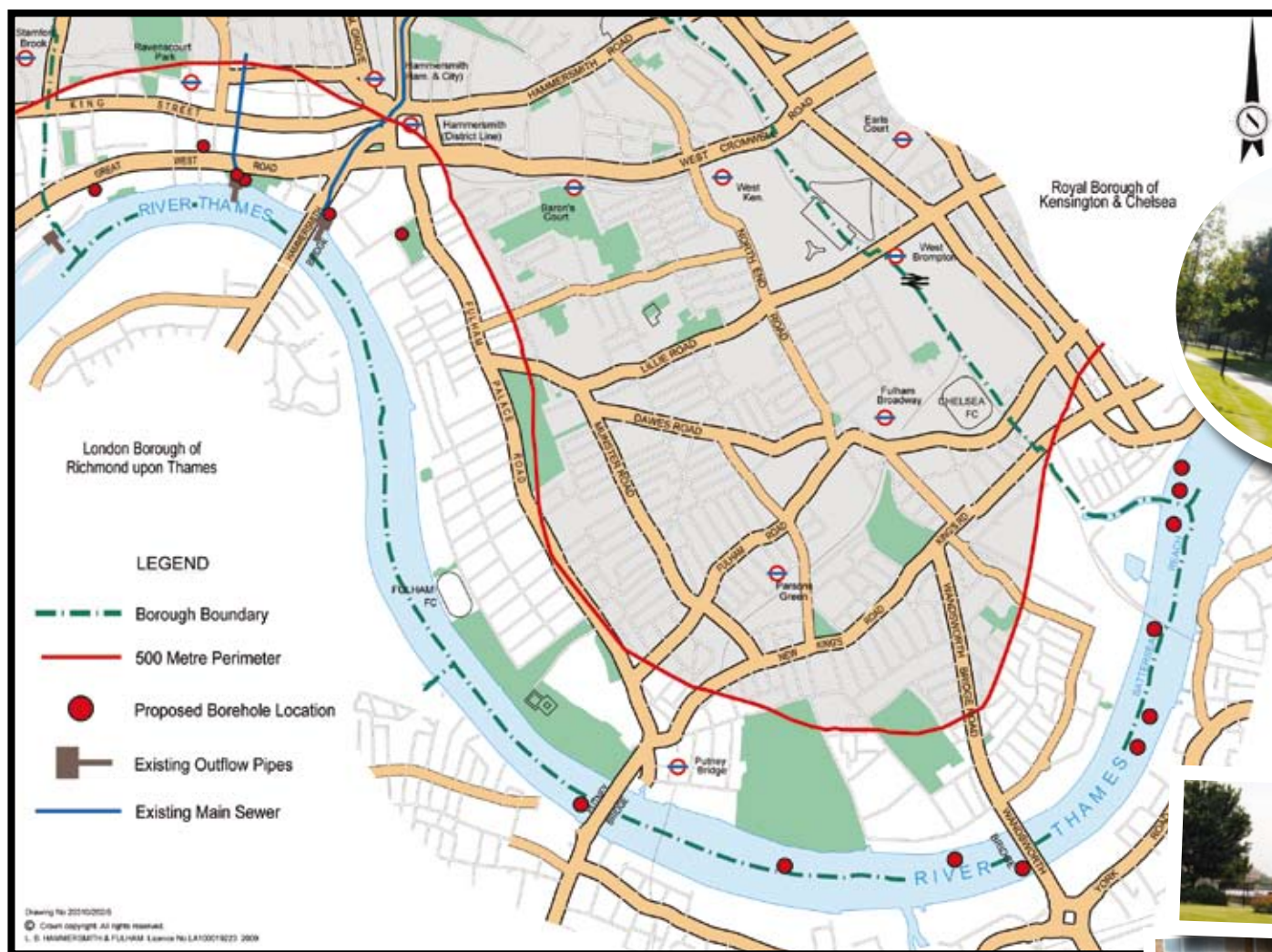
Trenmar Gardens, Kensal Green, London NW10 6BJ
info@mayhewanimalhome.org 020 8969 0178

www.mayhewanimalhome.org



FIGHT THE SUPER-SEWER

‘Thames Water doesn’t give a damn about the people who have to pay’



TESTING TIMES: Proposed bore hole locations for the super-sewer (left). Frank Banfield Park (above) and Furnivall Gardens have been used for test drilling already



YOUR SHOUT

IAN Nugent, 36, and John Nugent, 50, of Graddon Road, Hammersmith, told *h&f news*: “We went to the public meeting when the super-sewer was first announced because we oppose this idea.

“But at the end of the day, Thames Water will do what they want and are trying to meet EU regulations. But they are doing this at the cost to the taxpayers.

“If this takes eight years to finish it will really have a negative effect on the area.”

HAVE YOUR SAY!

Email: handfnews@lbhf.gov.uk or see: www.lbhf.gov.uk/supersewer

► Fulham residents are facing weeks of summer noise hell while drilling is carried out
► Bills are set to soar by 20 per cent to pay for the building of the super-sewer

JON WEISGARD

THOUSANDS of residents could face weeks of sleepless nights when Thames Water starts noisy drilling on the river next month.

It will be floating drilling platforms on to the Thames at eight sites along the riverfront in Fulham, each measuring up to 10 metres high. The drills will probe deep under the riverbed as the water company ploughs ahead with its plans to build its super-sewer.

Drilling will start close to Chelsea Creek, Fulham, in mid-August, moving westerly as far as Putney Bridge in October.

Thames Water has even earmarked three sites along this frontage where it could potentially carry out the noisy work 24 hours a day for a full week.

Work at the other sites is expected

to take place during the daytime and could last several weeks.

Four of the sites will involve a noisy form of boring called ‘percussive drilling’. Two sites close to Broomhouse Dock are likely to bear the brunt of the work and can expect percussive drilling 24 hours a day in October.

Riverside residents have already slammed Thames Water over the plans.

Chris Littmoden, of the Imperial Wharf Residents’ Association, said: “It would be helpful and the decent thing to do if Thames Water had contacted those likely to be affected, telling them what was about to happen and why.

“As usual it would appear that a monopolistic supplier doesn’t appear to give a damn about the people who will have to pay for the cost of building the super-sewer or that we pay their wages.”

Michael Fordham, of the Hammersmith Embankment Residents’ Association, said: “The news that river drilling will take place at nearby Putney Bridge is alarming in the extreme.

“Without doubt this work will be both costly and disturbing to local peo-

ple. It is my view that such drilling work is hugely premature and further debate and consultation is required before this water company rides roughshod over local riverside communities.”

To further rub salt in the wound, Thames Water has just announced plans to increase bills by almost 20 per cent in order to pay for the super-sewer.

It announced the price hike on the same day that it posted profits of £605million – the highest ever by a British water supplier.

The company, which has already put up bills by a third in the past five years, said average annual household water bills in London will rise from £283 to £331 between next year and 2015.

H&F council leader Stephen Greenhalgh said: “Expecting residents to foot the bill for this misguided £2billion project is not acceptable.

“Residents are already struggling to make ends meet as the recession takes grip and hitting them in the pocket for this most basic of human rights is just another kick in the teeth.

“We urge Thames Water to think again. Imposing bill rises on all Thames

Water bill payers is nothing less than a super stealth tax.

“We are all for cleaning up the Thames, but there has to be a less expensive and disruptive alternative.”

Andrew Whetnall, of the Consumer Council for Water, said: “Since Ofwat [the water regulator] advised that the costs of this project were huge, and the benefits ‘uncertain, marginal at best, and subject to erosion by climate change’ there appears to have been a further escalation of costs – now three times the 2005 estimates for the Lee Tunnel which is much shorter and less complex than the Tideway Tunnel.

“The whole [super sewer] project needs a rethink.”

If the super sewer gets the green light, the council warns that thousands of residents could be forced into ‘water poverty’ – where more than three per cent of disposable income is spent on water bills.

Council bosses believe that the costs of the super sewer hugely outweigh its benefits and it is likely that it will end up over budget and off schedule.

Thames Water has even admitted that raw sewage will still continue to flow into the Thames after the billions spent on this project.

Instead, council bosses believe Thames Water should concentrate on finding an answer to the problem of basement flooding that are blighting the lives of residents of riverside boroughs, such as Hammersmith & Fulham.

The vast construction site for the entrance to the tunnel, which is likely to be in the borough, will be the size of four football pitches.

In addition, there could be a number of smaller sites to be dug in parks throughout the capital.

Residents of the Queen Caroline estate are braced for drilling works after Thames Water confirmed they were starting work this week to test underground conditions for a super-sewer tunnel network (see story on left).

A spokesman from Thames Water told *h&f news*: “We are digging at these locations because they are close to the combined sewer overflow points where sewage can enter the Thames during heavy rain.

“We will need to connect these overflows to the Thames Tunnel, and therefore need to assess the geological conditions in these areas.”

But Cllr Greenhalgh hit back at the Thames Water plans, adding: “We will back the residents who are concerned about the bore hole works close to their homes.

“Thames Water is doing nothing to allay the fears of residents and it is time for them to come clean and open up a genuine dialogue with local residents.”